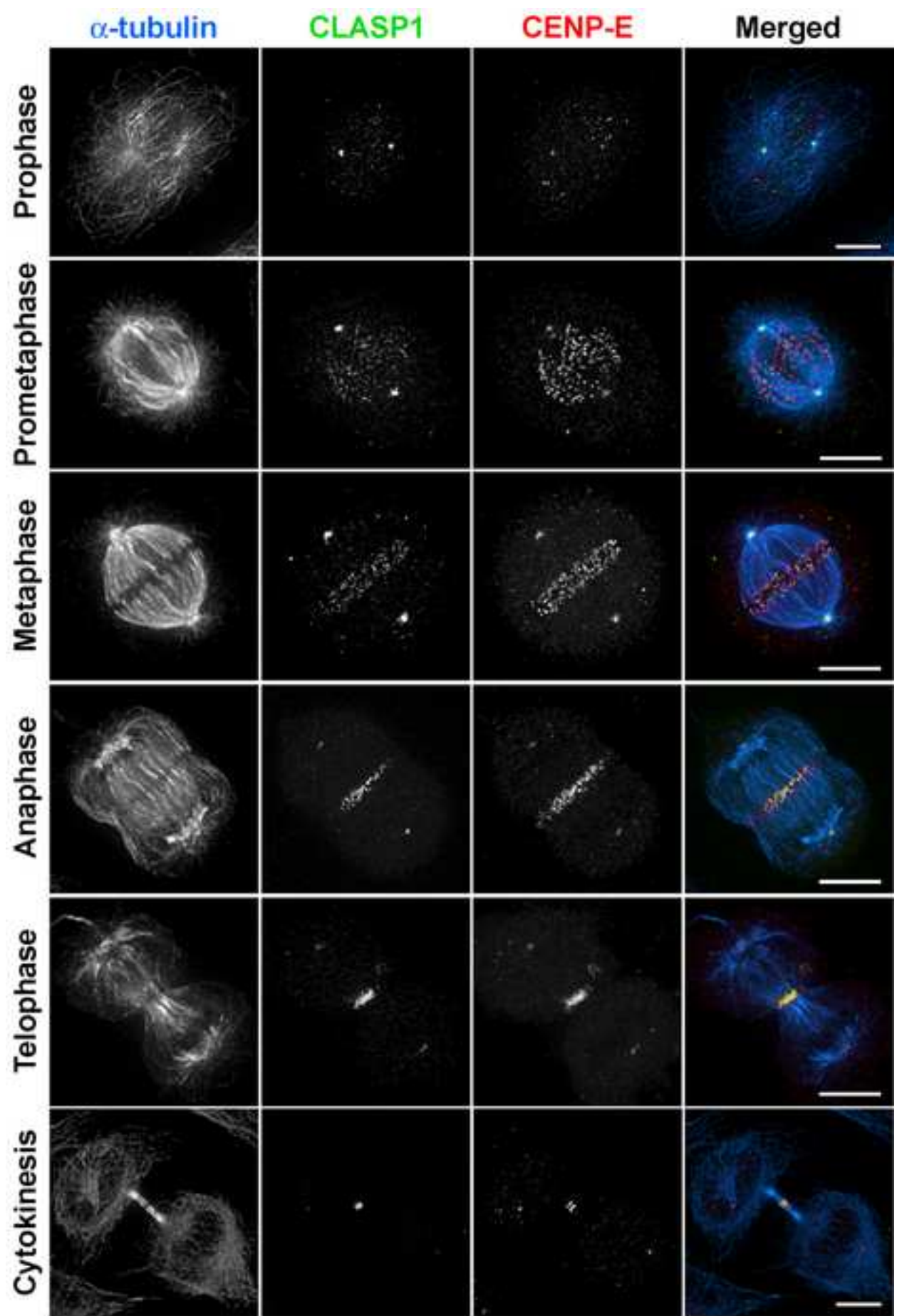
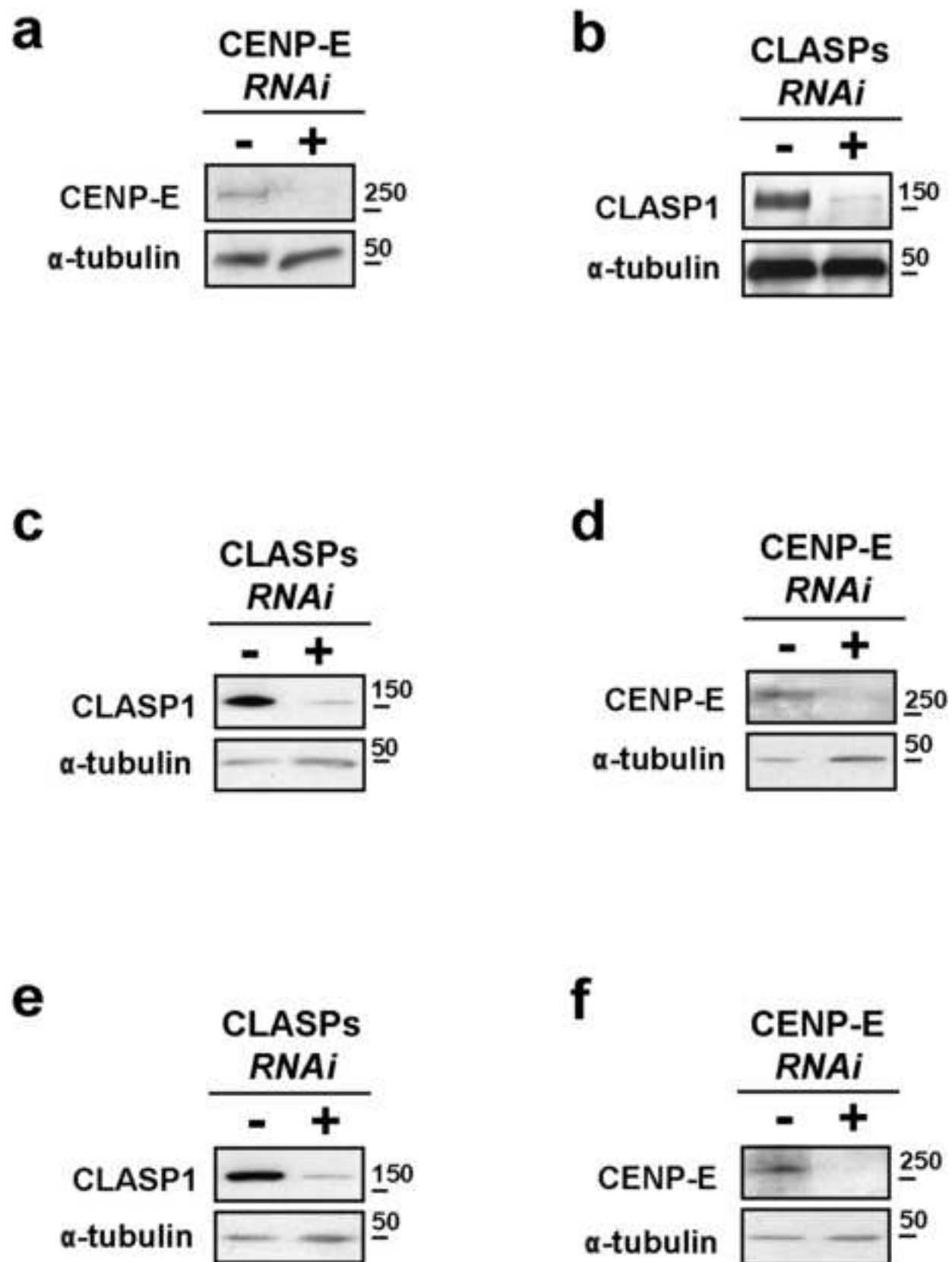


| Table S1: List of CLASP1 interactors identified by mass spectrometry analysis. | Sequence Coverage (%) |
|---|-----------------------|
| restin isoform b; cytoplasmic linker 1; Reed-Steinberg cell-expressed intermediate filament-associated protein [Homo sapiens] (CLIP-170) | 43,7 |
| restin isoform a; cytoplasmic linker 1; Reed-Steinberg cell-expressed intermediate filament-associated protein [Homo sapiens] | 43,2 |
| GRIP coiled-coil protein GCC185 isoform b; CTCL tumor antigen se1-1; CLL-associated antigen KW-11; GRIP and coiled-coil domain-containing 2 [Homo sapiens] | 41,9 |
| GRIP coiled-coil protein GCC185 isoform a; CTCL tumor antigen se1-1; CLL-associated antigen KW-11; GRIP and coiled-coil domain-containing 2 [Homo sapiens] | 41,6 |
| mitotic spindle coiled-coil related protein [Homo sapiens] (Astrin) | 29,2 |
| PREDICTED: chromosome 15 open reading frame 23 [Homo sapiens] | 28,2 |
| lipocalin 1 precursor; lipocalin 1 (protein migrating faster than albumin, tear prealbumin); Von Ebner gland protein; tear lipocalin [Homo sapiens] | 19,9 |
| centromere protein J; centrosomal P4.1-associated protein; LYST-interacting protein LIP1; LAG-3-associated protein [Homo sapiens] (CENP-J) | 16,3 |
| PREDICTED: similar to Heat shock cognate 71 kDa protein [Homo sapiens] | 16 |
| KIAA0802 [Homo sapiens] | 15,4 |
| MAP/microtubule affinity-regulating kinase 2 isoform a; ELKL motif kinase; ELKL motif kinase 1 [Homo sapiens] (MARK2) | 13,2 |
| PREDICTED: similar to epsilon isoform of 14-3-3 protein [Homo sapiens] (14-3-3) | 11,9 |
| PREDICTED: similar to tyrosine 3/tryptophan 5-monooxygenase activation protein, epsilon polypeptide; 14-3-3 epsilon; mitochondrial import stimulation factor L | 10,2 |
| sonic hedgehog preproprotein [Homo sapiens] | 9,3 |
| pleckstrin homology-like domain, family B, member 2; LL5 beta [Homo sapiens] | 8,4 |
| sine oculis homeobox homolog 3; holoprosencephaly 2, alobar or semilobar [Homo sapiens] | 8,1 |
| centromere protein E; Centromere autoantigen E (312kD); centromere protein E (312kD); kinesin family member 10 [Homo sapiens] (CENP-E) | 7,2 |
| galectin 3 binding protein; L3 antigen; Mac-2-binding protein; serum protein 90K [Homo sapiens] | 7,2 |
| hemopexin [Homo sapiens] | 6,1 |
| FLJ44670 protein [Homo sapiens] | 5,5 |
| Rab6-interacting protein 2 isoform alpha [Homo sapiens] | 5 |
| albumin precursor; PRO0883 protein [Homo sapiens] | 4,8 |
| PREDICTED: CLIP-associating protein 2 [Homo sapiens] (CLASP-2) | 4,4 |
| desmoglein 1 preproprotein; desmosomal glycoprotein 1 [Homo sapiens] | 4,2 |
| ninein isoform 4; GSK3B-interacting protein; ninein centrosomal protein; glycogen synthase kinase 3 beta-interacting protein [Homo sapiens] (Ninein) | 4,1 |
| cytoplasmic linker 2 isoform 1; Williams-Beuren syndrome chromosome region 4 [Homo sapiens] | 3,7 |
| KIAA0889 protein [Homo sapiens] | 3,5 |
| MAP/microtubule affinity-regulating kinase 3 [Homo sapiens] (MARK3) | 3,4 |
| replication factor C large subunit; replication factor C1; replication factor C (activator 1) 1 (145kD); MHC binding factor, beta [Homo sapiens] | 3,3 |
| catenin (cadherin-associated protein), alpha 2; Catenin, alpha-2 (cadherin-associated protein, related) [Homo sapiens] | 3,3 |
| hypothetical protein MGC45562 [Homo sapiens] | 3,1 |
| transient receptor potential cation channel, subfamily V, member 1; capsaicin receptor; vanilloid receptor subtype 1 [Homo sapiens] | 2,7 |
| cytoplasmic linker 2 isoform 2; Williams-Beuren syndrome chromosome region 4 [Homo sapiens] | 2,3 |
| paternally expressed 3; paternally expressed gene 3; pEg3 kinase [Homo sapiens] | 2,1 |
| alpha 1 type XII collagen short isoform precursor [Homo sapiens] | 1,8 |
| RAN-binding protein 2-like 1 isoform 1; sperm membrane protein BS-63; RAN-binding protein 2-like 1 [Homo sapiens] | 1,5 |
| microfilament and actin filament cross-linker protein isoform b; actin cross-linking factor; 620 kDa actin binding protein; macrophin 1; trabeculin-alpha; [Homo sapiens] | 1,4 |
| PI-3-kinase-related kinase SMG-1 isoform 2; phosphatidylinositol 3-kinase-related protein kinase; lambda/iota protein kinase C-interacting protein [Homo sapiens] | 1,3 |
| neurofibromin; Neurofibromin (neurofibromatosis, type I) [Homo sapiens] | 1,3 |
| fatty acid synthase [Homo sapiens] | 1 |
| cubilin; intrinsic factor-cobalamin receptor; intrinsic factor B12-receptor [Homo sapiens] | 0,9 |
| PREDICTED: similar to RAN-binding protein 2-like 1 isoform 1; sperm membrane protein BS-63; RAN-binding protein 2-like 1 [Homo sapiens] | 0,9 |
| MDN1, midasin homolog [Homo sapiens] | 0,6 |

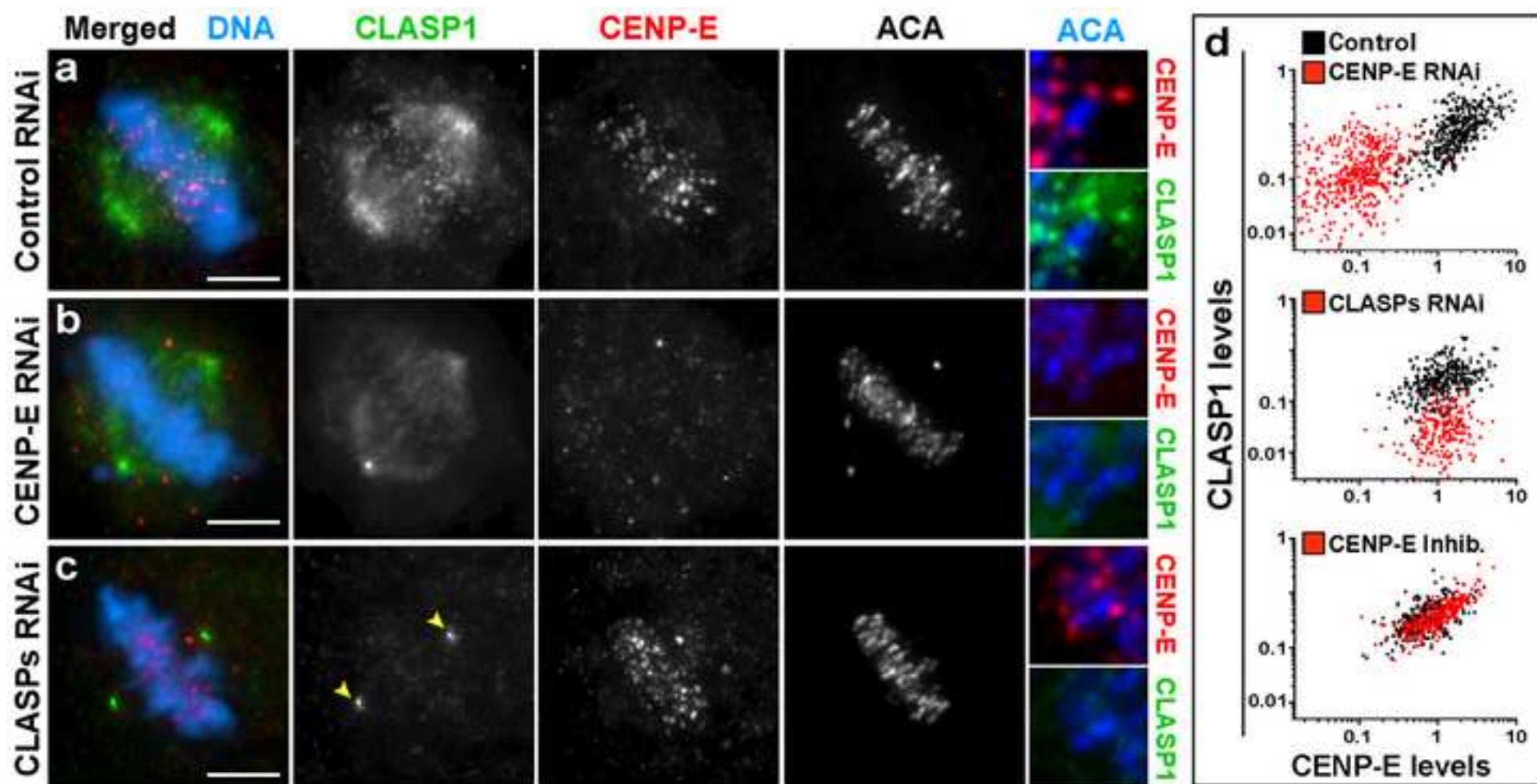
Figure S1



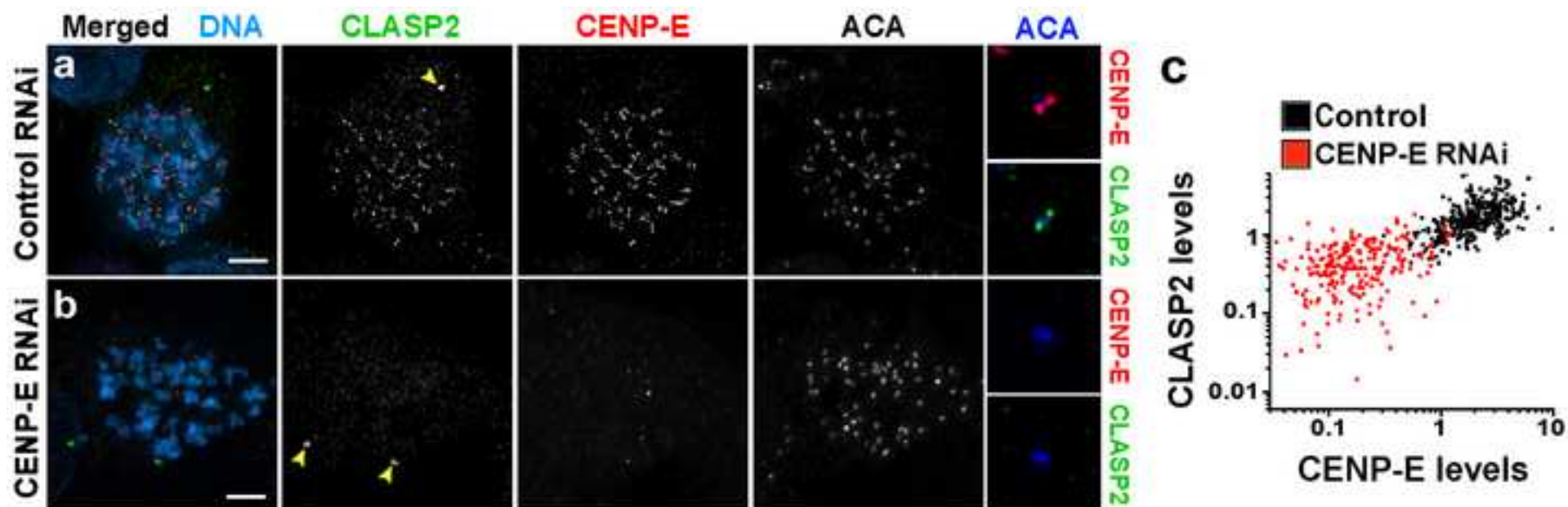
Sup. Figure 1 - Maffini et al.,



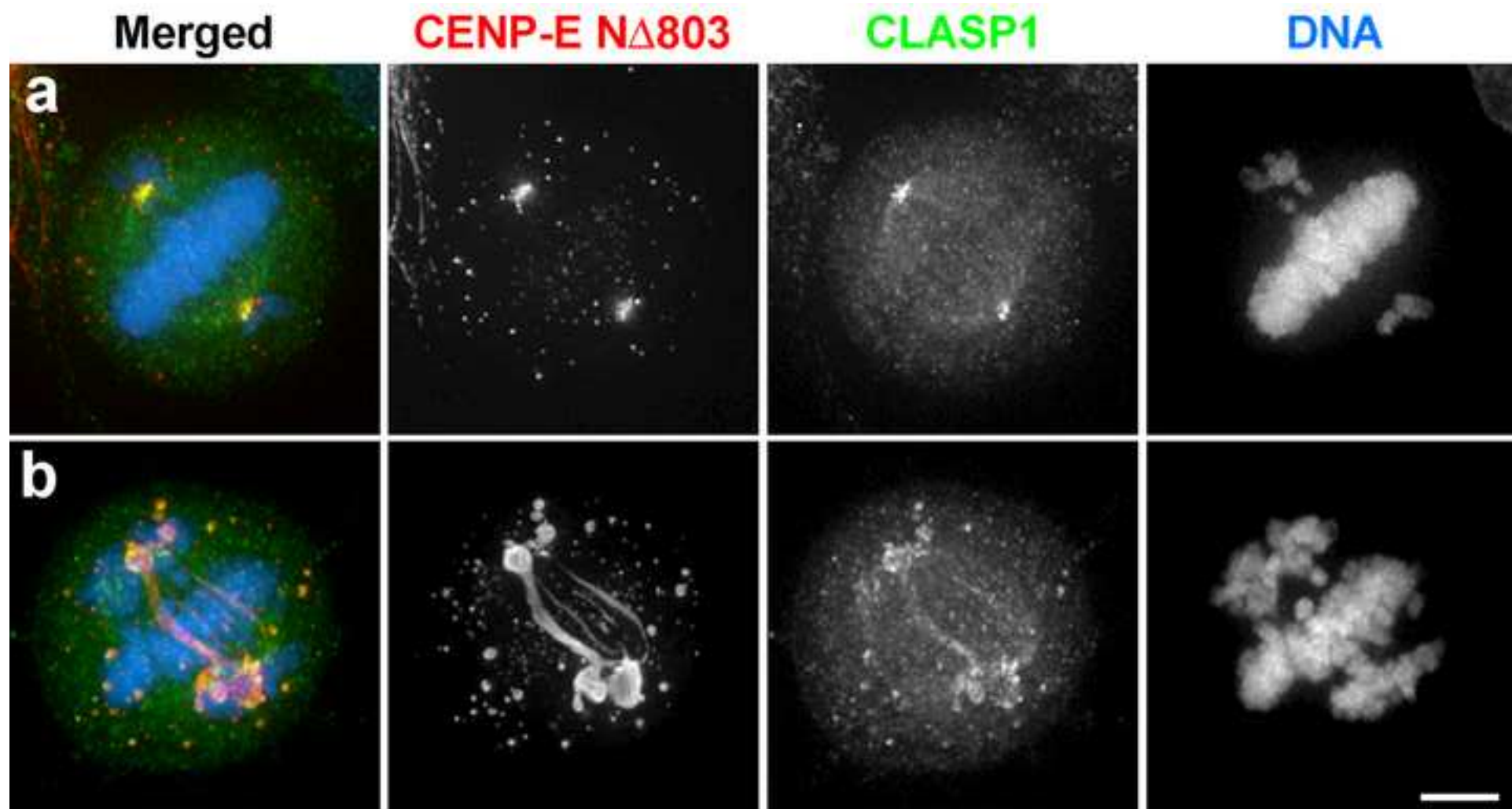
Sup. Figure 2 - Maffini et al.,



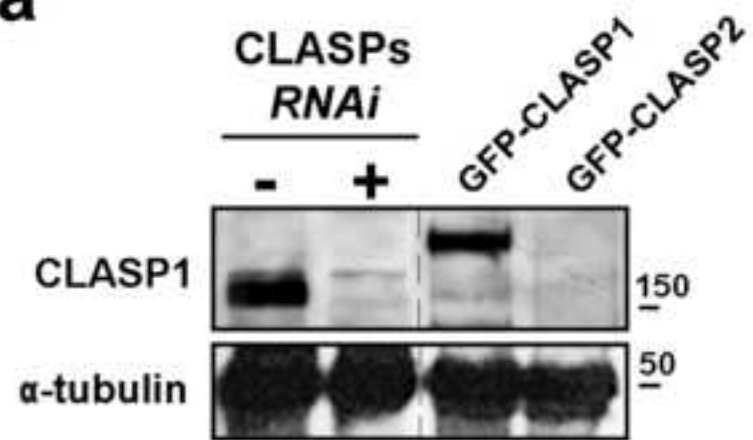
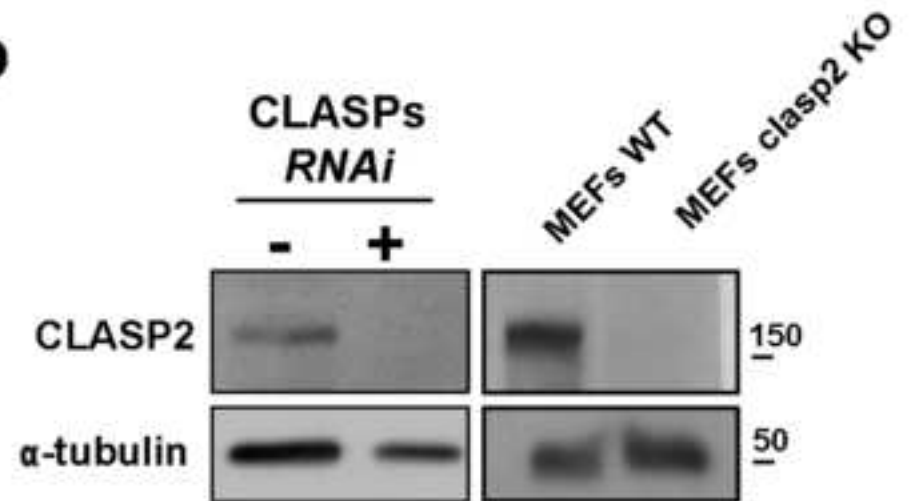
Sup. Figure 3 - Maffini et al.,



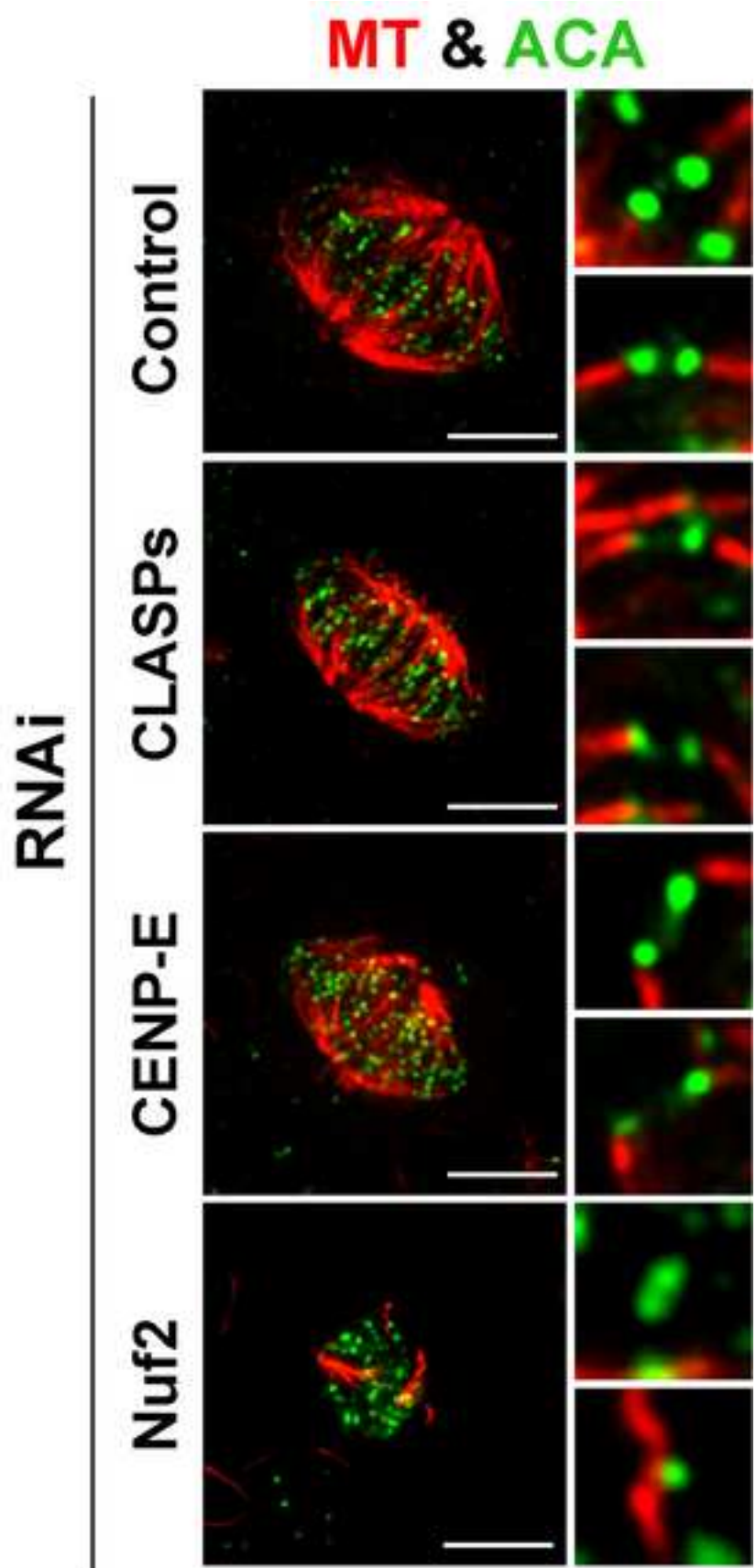
Sup.Figure 4- Maffini et al.,



Sup. Figure 5 - Maffini et al.,

a**b**

Sup. Figure 6 - Maffini et al.,



Sup. Figure 7- Maffini et al.,

