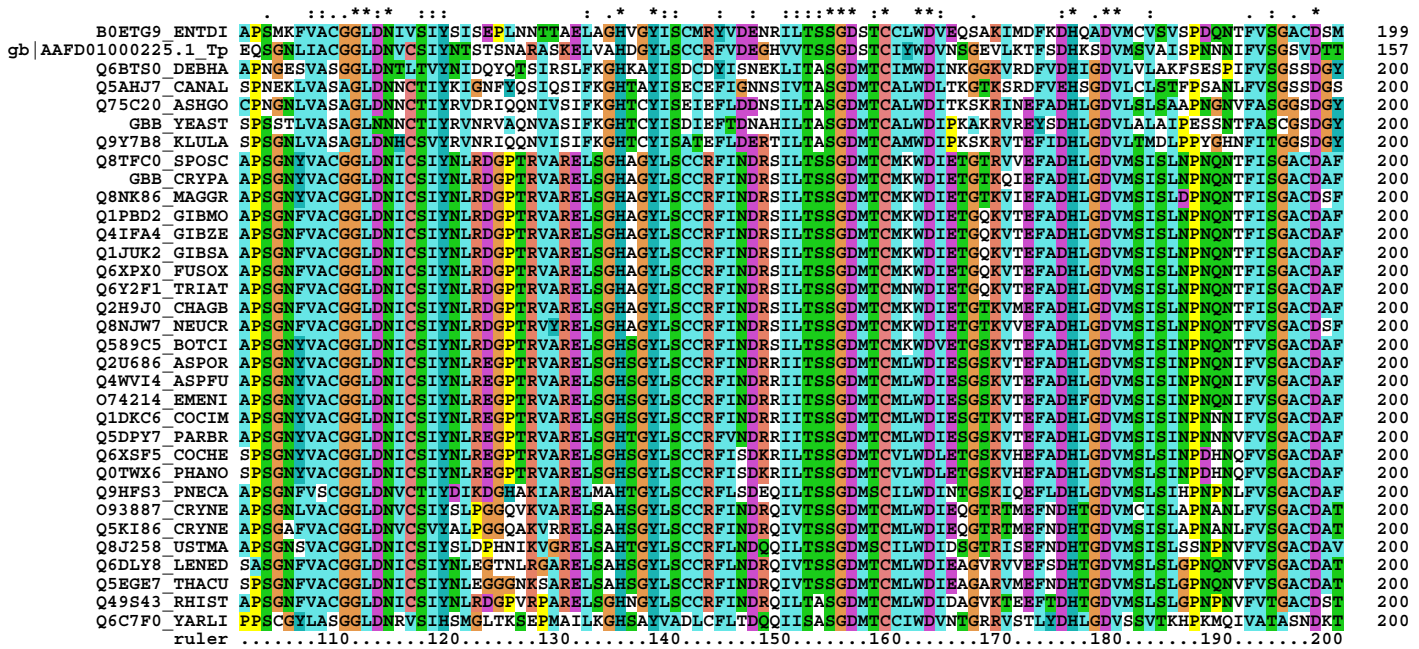
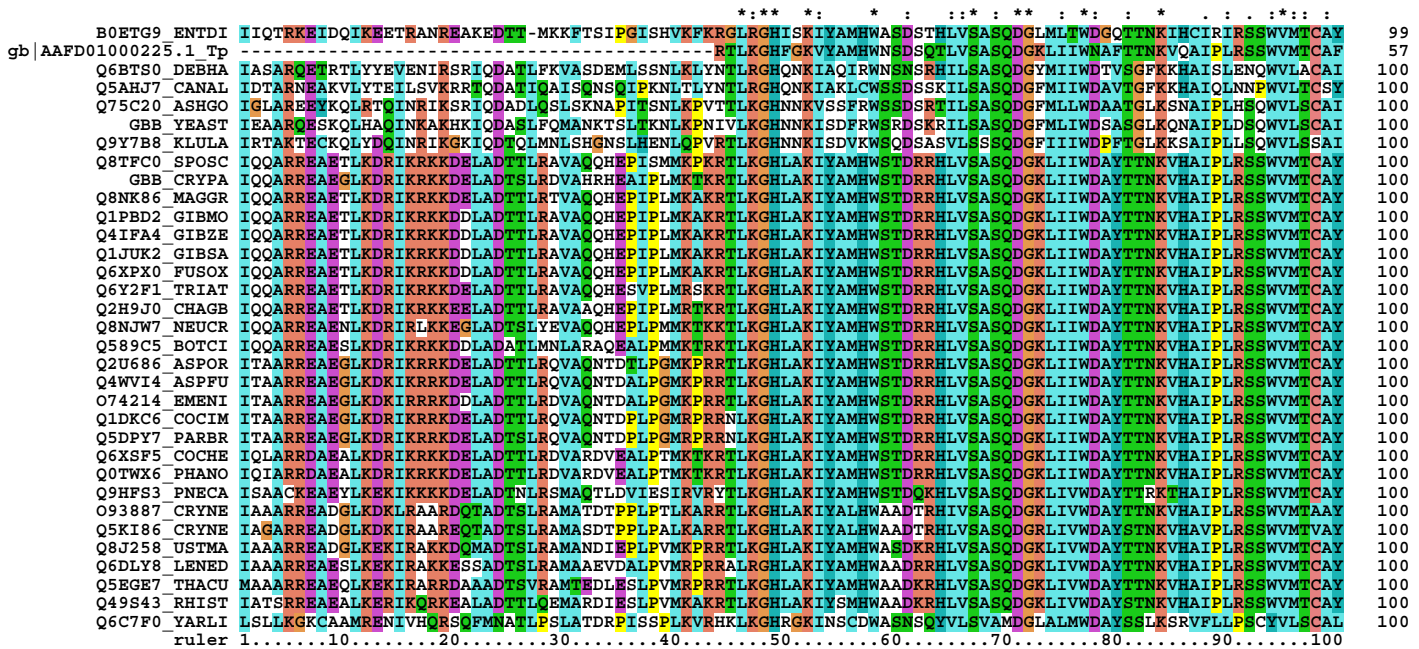


CLUSTAL X (1.81) MULTIPLE SEQUENCE ALIGNMENT

File: alignments-for-ancestor-fungal

Page 1 of 2



CLUSTAL X (1.81) MULTIPLE SEQUENCE ALIGNMENT

File: alignments-for-ancestor-fungal
Page 2 of 2

```

      : ** *      .      : .      . . . : : ** :      : : **      : .      : .      : : . : : ** *      : .
gb | B0ETG9  ENTDI  AKLWDIRMENCVAFTGHADADINAIAFHPSGNAFITGSDDFSCKLPDIRADRELMNYSWWDVLKGDYITKLTHTENRVSCLGVSPDGYALCTGSWDSLTIW  299
    | AAFD01000225.1 Tp AKVWDIRNGKCVOTHTIGHHEADINSVAFFPDGHAFGTGSDDASCRLFDMRSYGEVNFKFKVWDLSDADQCAFARENVSCLGVNKNGDALCTGSWDTNLIW  257
    | Q6BTS0  DEBHA  AKIWDLRQCFVAVSFFVSNSDINCIKVFDPNHSFMTGSDDGIIIRLFDMRSDCELSNYSIWDDLKGNIVGALGHLNKNVQVSSPDGLIICTASWDQTIWV  300
    | Q5AHJ7  CANAL  AKIWDLRSPPTPTOSFGISNSDVNSVKVFPDGNAFATGSDDGSIRLFDLRCDCDELGHYSVWDDLKSGEIVGIIGHLNKNQVSSPDGVALATGSWDATIVW  300
    | Q75C20  ASHGO  LYIWDKRVPTSVOSFFVSDSDVSKVFFRRNGNTIATGSDDGCINLYDLRSDCRIANYSVWDLVKGEIIGKLDHSDRISGVATSPDGLAICTGSWDMTMVW  300
    | GBB  YEAST  TYIWDSPRSFSAVOSFFVNDSDINLRFFKDGMSIVAGSDNGAINMYDLRSDCSIAFTSVWDLVKGIVKLEHGGRVTVGRSSPDGLAVCTGSWDSMTMIW  300
    | Q9Y7B8  KLULA  AYLWDIRQPNSAOSFFIISDSVSAIKFFNNGESFMAAGSDDGSARLFDLRSDCQISTYSVWDLIKGEMIGKVDHRNRINAVKTSPDGMVAVSSWDMTLVW  300
    | Q8TF00  SPOSC  AKLWDIRAGKAVOTFAGHESDINAIOFFPDGHSFVTGSDDATCRLFDIRADRELNLYGVWDLVTRGEKVGSLVHENRVSCLGVSDNGISLCTGSWDSLLIW  300
    | GBB  CRYPA  AKLWDIRAGKAVOTFAGHESDINAIOFFPDGHSFVTGSDDATCRLFDIRADRELNLYGVWDLVTRGEKVGSLVHENRVSCLGVSDNGISLCTGSWDSLLIW  300
    | Q8NK86  MAGGR  AKLWDIRAGKAVOTFAGHESDINAIOFFPDGHSFVTGSDDATCRLFDIRADRELNLYGVWDLVTRGEKVGSLVHENRVSCLGVSDNGISLCTGSWDSLLIW  300
    | Q1PBD2  GIBMO  AKLWDIRAGKAVOTFAGHESDINAIOFFPDGHSFVTGSDDATCRLFDIRADRELNLYGVWDLVTRGEKVGSLVHENRVSCLGVSDNGISLCTGSWDSLLIW  300
    | Q4IFA4  GIBZE  AKLWDIRAGKAVOTFAGHESDINAIOFFPDGHSFVTGSDDATCRLFDIRADRELNLYGVWDLVTRGEKVGSLVHENRVSCLGVSDNGISLCTGSWDSLLIW  300
    | Q1JUK2  GIBSA  AKLWDIRAGKAVOTFAGHESDINAIOFFPDGHSFVTGSDDATCRLFDIRADRELNLYGVWDLVTRGEKVGSLVHENRVSCLGVSDNGISLCTGSWDSLLIW  300
    | Q6XPX0  FUSOX  AKLWDIRAGKAVOTFAGHESDINAIOFFPDGHSFVTGSDDATCRLFDIRADRELNLYGVWDLVTRGEKVGSLVHENRVSCLGVSDNGISLCTGSWDSLLIW  300
    | Q6Y2F1  TRIAT  AKLWDIRAGKAVOTFAGHESDINAIOFFPDGHSFVTGSDDATCRLFDIRADRELNLYGVWDLVTRGEKVGSLVHENRVSCLGVSDNGISLCTGSWDSLLIW  300
    | Q2H9J0  CHAGB  AKLWDIRAGKAVOTFAGHESDINAIOFFPDGHSFVTGSDDATCRLFDIRADRELNLYGVWDLVTRGEKVGSLVHENRVSCLGVSDNGISLCTGSWDAVLVW  300
    | Q8NJW7  NEUCR  AKLWDIRAGKAVOTFAGHESDINAIOFFPDGHSFVTGSDDATCRLFDIRADRELNLYGVWDLVTRGEKVGSLVHENRVSCLGVSDNGISLCTGSWDSLLIW  300
    | Q589C5  BOTCI  AKLWDIRAGKAVOTFAGHESDINAIOFFPDGHSFVTGSDDATCRLFDIRADRELNLYGVWDLVTRAEKVGSLVHDNRVSCLVGSDNGMGLCTGSWDSLLIW  300
    | Q2U686  ASPOR  AKLWDIRTGKAVOTFAGHESDINAIOFFPDGNAFGTGSDDTSRCLFDIRADRELNLYQVWDLVLRGDKVGSLSHENRVSCLGVSDNGISLCTGSWDSLLIW  300
    | Q4WVI4  ASPFU  AKLWDIRTGKAVOTFAGHESDINAIOFFPDGNAFGTGSDDTSRCLFDIRADRELNLYQVWDLVLRGDKVGSLSHENRVSCLGVSDNGISLCTGSWDSLLIW  300
    | O74214  EMENI  AKLWDIRTGKAVOTFAGHESDINAIOFFPDGNAFGTGSDDTSRCLFDIRADRELNLYQVWDLVLRGDKVGSLSHENRVSCLGVSDNGISLCTGSWDSLLIW  300
    | Q1DKC6  COCIM  AKLWDIRVDDKAVOTFAGHESDINAIOFFPDGNAFGTGSDDTSRCLFDIRADRELNLYQVWDLVLRGDKVGSLSHENRVSCLGVSDNGISLCTGSWDSLLIW  300
    | Q5DPY7  PARBR  AKLWDIRAGKAVOTFAGHESDINAIOFFPDGNAFGTGSDDTSRCLFDIRADRELNLYQVWDLVLRGDKVGSLSHENRVSCLGVSDNGISLCTGSWDSLLIW  300
    | Q6XSF5  COCHE  AKLWDIRQOKCVOTFAAHDSDINAIOFFPDGNAFGTGSDDASCRCLFDIRADRELNLYQVWDLVLRGDKVGSLSHENRVSCLGVSDNGISLCTGSWDSMLIW  300
    | Q0TWX6  PHANO  AKLWDIRQOKCVOTFAAHDSDINAIOFFPDGNAFGTGSDDASCRCLFDIRADRELNLYQVWDLVLRGERVGTLOQHDNRVSCLVGSDNDALSLCTGSWDSMVF  300
    | Q9HFS3  PNECA  AKIWDIRIGKSVOTFAGHESDINAVOYFFPNGNAFATGSDDASCRLFDVDRADRELNLYQVWDLVLRGNRVGILQHDNRVSCVGSKDGRLATGSWDSLLIW  300
    | O93887  CRYNE  AKVWDIRTGKAVOTFAGHESDINAVOYFFPNGDAFATGSDDASCRLFDLRADRELNLYQVWDLVLRGDKVGSLSHENRVSCLGVSDNGISLCTGSWDSLLIW  300
    | Q5KI86  CRYNE  AKVWDIRTGKAVOTFAGHESDINAVOYFFPNGDAFATGSDDASCRLFDLRADRELNLYQVWDLVLRGDKVGSLSHENRVSCLGVSDNGISLCTGSWDSLLIW  300
    | Q8J258  USTMA  AKVWDIRSGKAVOTFAGHESDINAVOYFFPNGDAFATGSDDASCRLFDLRADRELNLYQVWDLVLRGDKVGSLSHENRVSCLGVSDNGISLCTGSWDSRLIW  300
    | Q6DLY8  LENED  AKLWDIRSGRATOTFAGHESDINAVOYFFPNGDAFATGSDDASCRLFDLRADRELNLYQVWDLVLRGDKVGSLSHENRVSCLGVSDNGISLCTGSWDSLW  300
    | Q5EGE7  THACU  AKLWDIRTGKATRRSPANISILCSEFFPNGDAFATGSDDASCRLFDLRADRELNLYQVWDLVLRGDKVGSLSHENRVSCLGVSDNGISLCTGSWDSLW  300
    | Q49S43  RHIST  SKVWDIRITKKCVOTFAGHESDINAVOYFFPNGDSFVTGSDDTSRCLFDLRADRELNLYQVWDLVLRGDKVGSLSHENRVSCLGVSDNGISLCTGSWDSLW  300
    | Q6C7F0  YARLI  VKIWDLRIRACVOTFOGHNKDVTSVDFPFDGNVLSGGDSSARLFDLRADRELNLYQVWDLVLRGDKVGSLSHENRVSCLGVSDNGISLCTGSWDSLW  300
    | ruler  .....210.....220.....230.....240.....250.....260.....270.....280.....290.....300

```



```

gb | B0ETG9  ENTDI  A  300
    | AAFD01000225.1 Tp A  258
    | Q6BTS0  DEBHA  S  301
    | Q5AHJ7  CANAL  S  301
    | Q75C20  ASHGO  S  301
    | GBB  YEAST  S  301
    | Q9Y7B8  KLULA  H  301
    | Q8TF00  SPOSC  A  301
    | GBB  CRYPA  A  301
    | Q8NK86  MAGGR  A  301
    | Q1PBD2  GIBMO  A  301
    | Q4IFA4  GIBZE  A  301
    | Q1JUK2  GIBSA  A  301
    | Q6XPX0  FUSOX  A  301
    | Q6Y2F1  TRIAT  A  301
    | Q2H9J0  CHAGB  A  301
    | Q8NJW7  NEUCR  A  301
    | Q589C5  BOTCI  S  301
    | Q2U686  ASPOR  A  301
    | Q4WVI4  ASPFU  A  301
    | O74214  EMENI  A  301
    | Q1DKC6  COCIM  A  301
    | Q5DPY7  PARBR  A  301
    | Q6XSF5  COCHE  A  301
    | Q0TWX6  PHANO  C  301
    | Q9HFS3  PNECA  A  301
    | O93887  CRYNE  S  301
    | Q5KI86  CRYNE  S  301
    | Q8J258  USTMA  A  301
    | Q6DLY8  LENED  A  301
    | Q5EGE7  THACU  A  301
    | Q49S43  RHIST  A  301
    | Q6C7F0  YARLI  S  301
    | ruler  .

```