

Figure W1. PEA3 expression in ovarian cancer cell lines. Western blot analysis on OVCA433, 433mir125a, DOV13, and DOVmir125a cells for PEA3 and β -tubulin. The 433mir125a and DOVmir125a cells are cells overexpressing miR-125a.

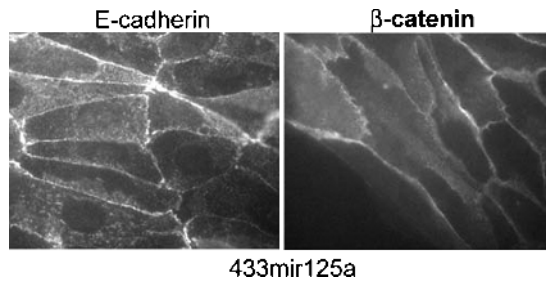


Figure W2. Adherens junctions in OVCA433 cells overexpressing miR-125a. Immunofluorescence performed for E-cadherin and β -catenin on 433mir125a cells demonstrates the presence of E-cadherin containing adherens junctions.