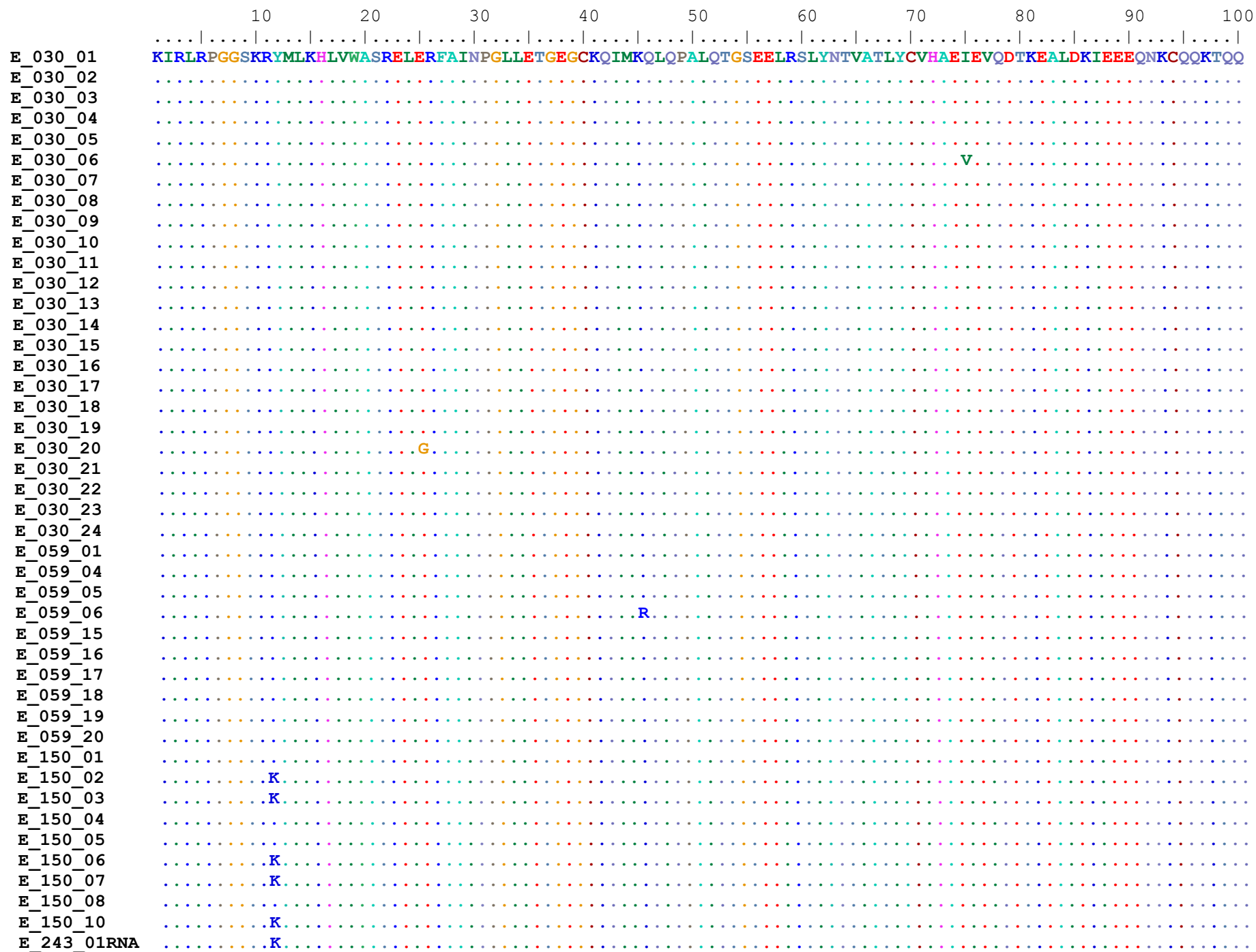


Fig. S8. Subject E-3430. Alignment of translated amino acids.



E_243_02RNAK.....	
E_243_03RNAK.....	
E_243_04RNAK.....	G
E_243_05RNAK.....	G
E_243_06RNA	.K.....K.....	
E_274_01K.....	
E_274_02K.....	G
E_274_03K.....	
E_274_04K.....	G
E_274_05K.....	
E_274_06K.....	G
E_274_07K.....	G
E_274_08K.....	S
E_274_09K.....	
E_274_10K.....	G
E_305_01K.....	G
E_305_02K.....	
E_305_03K.....	G
E_305_04K.....	G
E_305_05K.....	
E_305_06K.....	G
E_305_07K.....	G
E_305_08K.....	
E_305_09K.....	G
E_305_10K.....	G
E_339_01K.....	
E_339_02K.....	G
E_339_03K.....	G
E_339_05K.....	
E_339_06K.....	
E_339_07	.K.....K.....	G
E_339_09K.....	
E_339_10K.....	
E_404_01K.....	G
E_404_02K.....	G
E_404_03K.....	G
E_404_04K.....	G
E_404_04RNAK.....	I
E_404_05K.....	
E_404_05RNAK.....	G
E_404_06K.....	G
E_404_07	.K.....K.....	
E_404_09K.....	G
E_404_09RNAK.....	R
E_404_10K.....	G
E_404_10RNA	.K.....K.....	G

E_404_12RNAK.....E.....R.....G.....
 E_404_13RNA ..K.....K.....
 E_404_14RNAK.....G.....
 E_404_15RNAK.....G.....
 E_404_16RNAK.....G.....
 E_404_17RNAK.....G.....
 E_404_18RNAK.....G.....
 E_404_19RNAN.K.....R.....G.....
 E_404_20RNAK.....

.....110.....120.....130.....140.....150.....160.....170.....180.....190.....200.....

E_030_01 AKEADGKVSQNYPIVONLQGMVHQALSPRTLNAWVKVIEEKGFNPEVIPMFTALSEGATPQDLNLTMLNTVGGHQAAOMLKDITINEEAAEWDRLHPVHA
 E_030_02
 E_030_03
 E_030_04
 E_030_05
 E_030_06H.....P.....
 E_030_07
 E_030_08
 E_030_09
 E_030_10
 E_030_11
 E_030_12
 E_030_13
 E_030_14
 E_030_15
 E_030_16
 E_030_17
 E_030_18
 E_030_19
 E_030_20
 E_030_21
 E_030_22
 E_030_23
 E_030_24
 E_059_01
 E_059_04
 E_059_05
 E_059_06
 E_059_15
 E_059_16
 E_059_17
 E_059_18
 E_059_19
 E_059_20

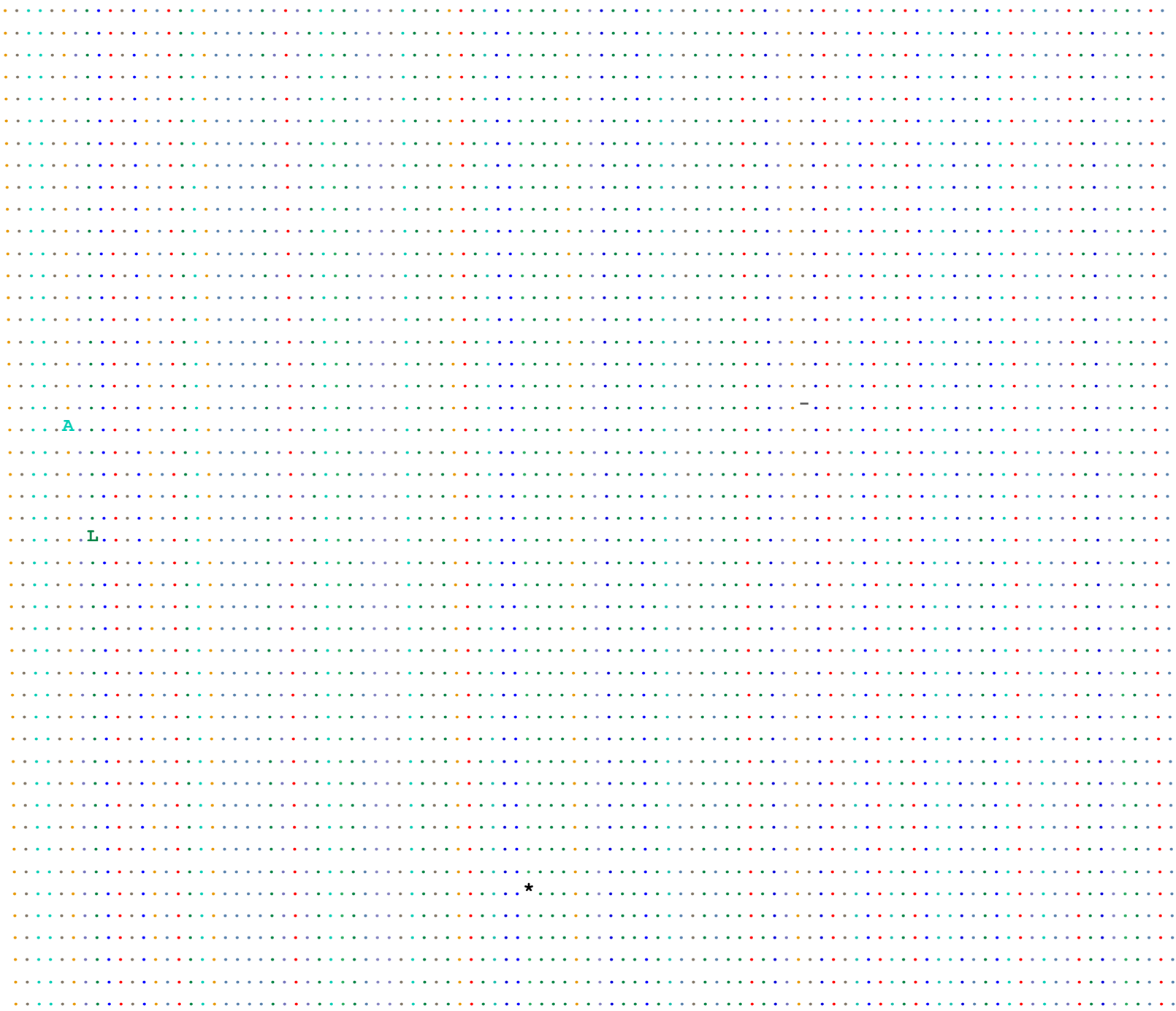
E_150_01
E_150_02
E_150_03
E_150_04
E_150_05
E_150_06
E_150_07
E_150_08
E_150_10 L
E_243_01RNA L S
E_243_02RNA
E_243_03RNA L
E_243_04RNA L
E_243_05RNA L
E_243_06RNA L
E_274_01 L
E_274_02 L
E_274_03 L
E_274_04 L
E_274_05 L
E_274_06 L
E_274_07 L
E_274_08 L
E_274_09 L
E_274_10 L
E_305_01 L
E_305_02 L
E_305_03 L
E_305_04 L
E_305_05 L
E_305_06 L
E_305_07 L
E_305_08 L
E_305_09 L
E_305_10 L
E_339_01 L
E_339_02 L
E_339_03 L
E_339_05 L
E_339_06 L
E_339_07 L
E_339_09 L
E_339_10 L
E_404_01 L
E_404_02 L
E_404_03 L

E_404_04L.....
E_404_04RNAL.....
E_404_05L.....
E_404_05RNAL.....
E_404_06L.....
E_404_07L.....
E_404_09L.....
E_404_09RNAL.....
E_404_10L.....
E_404_10RNAL.....
E_404_12RNAL.....
E_404_13RNAL.....
E_404_14RNAL.....
E_404_15RNAL.....
E_404_16RNAL.....
E_404_17RNAL.....
E_404_18RNAL.....
E_404_19RNAL.....
E_404_20RNAL.....

210 220 230 240 250 260 270 280 290 300
.....|.....|.....|.....|.....|.....|.....|.....|.....|.....|.....|.....|.....|.....|.....|

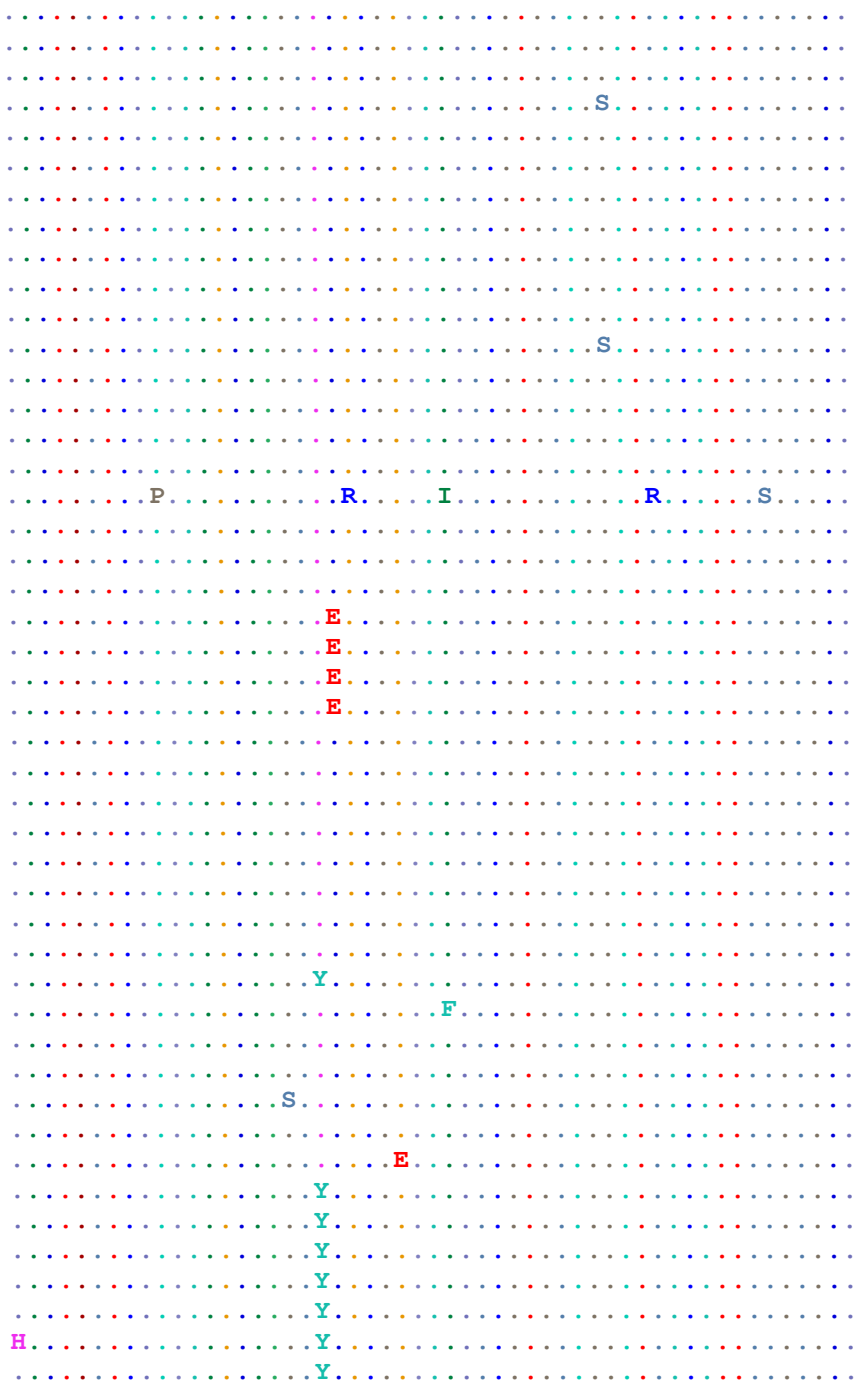
E_030_01 GPAAPGQIREPRGSDIAGTTSTLQEQIAWMTNPAIPVGDYKRWILGLNKIVRMYSILDIKQGPKEPFRDYVDRFFKTLRAEQATQDVKNWMTDT
E_030_02
E_030_03
E_030_04
E_030_05
E_030_06A.....
E_030_07
E_030_08
E_030_09
E_030_10
E_030_11
E_030_12
E_030_13
E_030_14
E_030_15
E_030_16
E_030_17
E_030_18
E_030_19
E_030_20
E_030_21
E_030_22
E_030_23
E_030_24

E_059_01
E_059_04
E_059_05
E_059_06
E_059_15
E_059_16
E_059_17
E_059_18
E_059_19
E_059_20
E_150_01
E_150_02
E_150_03
E_150_04
E_150_05
E_150_06
E_150_07
E_150_08
E_150_10
E_243_01RNA
E_243_02RNA
E_243_03RNA
E_243_04RNA
E_243_05RNA
E_243_06RNA
E_274_01
E_274_02
E_274_03
E_274_04
E_274_05
E_274_06
E_274_07
E_274_08
E_274_09
E_274_10
E_305_01
E_305_02
E_305_03
E_305_04
E_305_05
E_305_06
E_305_07
E_305_08
E_305_09
E_305_10
E_339_01



E_030_15	A			KC
E_030_16	A			K
E_030_17	A			K
E_030_18	A			KC
E_030_19	A			
E_030_20	A			K
E_030_21	A			K S
E_030_22	A			K
E_030_23	A			K
E_030_24	A			K
E_059_01	A			K
E_059_04	A			K
E_059_05	A			K
E_059_06	A			K
E_059_15	A			K
E_059_16	A			K
E_059_17	A			K
E_059_18	A			KC
E_059_19	A			K
E_059_20	A			K
E_150_01	A			
E_150_02	A		K	
E_150_03	A		K	K
E_150_04	A			
E_150_05	A			K
E_150_06	A		K	
E_150_07	A	A		K
E_150_08	A			K
E_150_10	A			K
E_243_01RNA	A		H	K
E_243_02RNA	A		H S	K
E_243_03RNA	A		K	K
E_243_04RNA	A		H	K
E_243_05RNA	A			K
E_243_06RNA	A		H S	K
E_274_01	R A		A	K
E_274_02	A		A	K
E_274_03	A		H S	K
E_274_04	A		A	K
E_274_05	A	A	K	K
E_274_06	A		A	K
E_274_07	A		K	K
E_274_08	A		K	K
E_274_09	A			K
E_274_10	A		A	K
E_305_01	A		A	K

E_030_05
E_030_06
E_030_07
E_030_08
E_030_09
E_030_10
E_030_11
E_030_12
E_030_13
E_030_14
E_030_15
E_030_16
E_030_17
E_030_18
E_030_19
E_030_20
E_030_21
E_030_22
E_030_23
E_030_24
E_059_01
E_059_04
E_059_05
E_059_06
E_059_15
E_059_16
E_059_17
E_059_18
E_059_19
E_059_20
E_150_01
E_150_02
E_150_03
E_150_04
E_150_05
E_150_06
E_150_07
E_150_08
E_150_10
E_243_01RNA
E_243_02RNA
E_243_03RNA
E_243_04RNA
E_243_05RNA
E_243_06RNA
E_274_01



E_274_02Y.....
E_274_03Y.....
E_274_04Y.....
E_274_05Y.....
E_274_06Y.....
E_274_07Y.....
E_274_08Y.....
E_274_09Y.....
E_274_10Y.....
E_305_01Y.....
E_305_02Y.....
E_305_03Y.....
E_305_04Y.....
E_305_05S.....
E_305_06Y.....
E_305_07Y.....
E_305_08Y.....
E_305_09Y.....
E_305_10Y.....
E_339_01Y.....
E_339_02Y.....
E_339_03Y.....
E_339_05Y.....
E_339_06Y.....
E_339_07Y.....
E_339_09Y.....
E_339_10Y.....
E_404_01Y.....
E_404_02Y.....
E_404_03Y.....
E_404_04Y.....
E_404_04RNAY.....
E_404_05Y.....
E_404_05RNAY.....
E_404_06Y.....
E_404_07L.....
E_404_09Y.....
E_404_09RNAY.....
E_404_10Y.....
E_404_10RNAY.....
E_404_12RNAY.....
E_404_13RNAY.....
E_404_14RNAY.....
E_404_15RNAY.....
E_404_16RNAY.....
E_404_17RNAY.....

E_404_18RNAY.....
E_404_19RNAY.....H.....
E_404_20RNAY.....