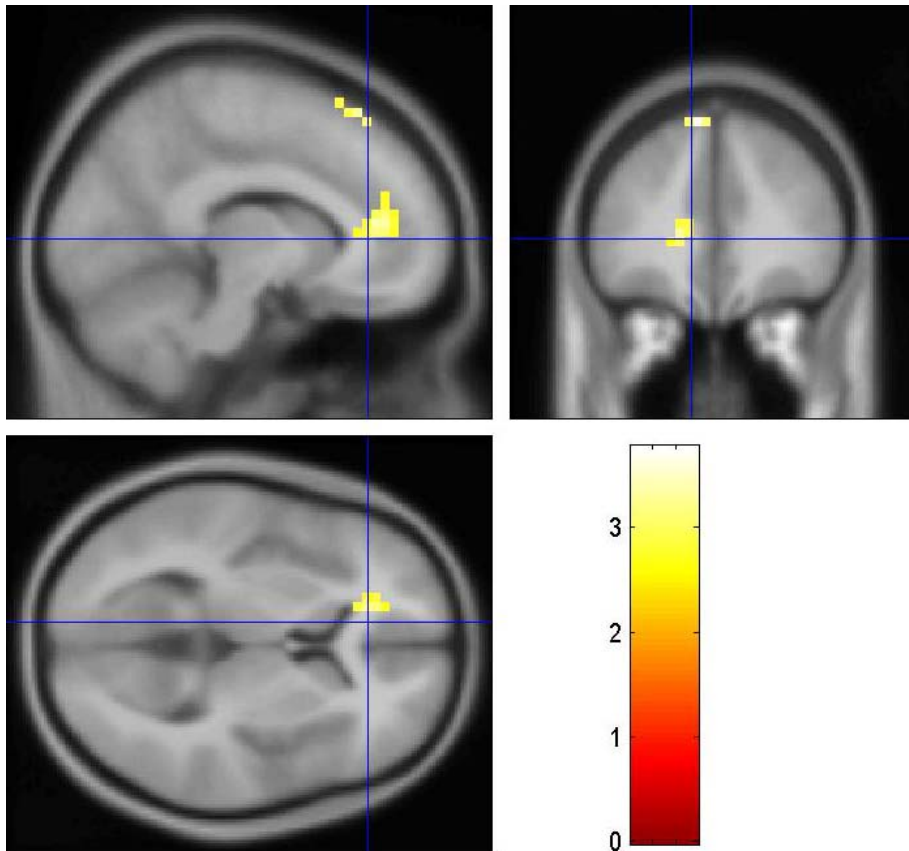


Duann et al. Supplementary Figure 1. Regional brain activation during stop success (SS) > stop error (SE), warm color; and during SE > SS, winter color. $P < 0.001$, uncorrected. With small volume correction for the rIFC mask, the area showed greater activation at $x = -44$, $y = 44$, $z = -12$, $p < 0.05$, corrected for FWE.



Duann et al. Supplementary Figure 2. Brain regions showing greater activation for the contrast stop success > stop error, in subjects with short, as compared to those with long SSRT. $P < 0.005$, uncorrected. With small volume correction for the preSMA mask, the area showed greater activation at $x = -8$, $y = 36$, $z = 56$, $p < 0.05$, corrected for FWE.