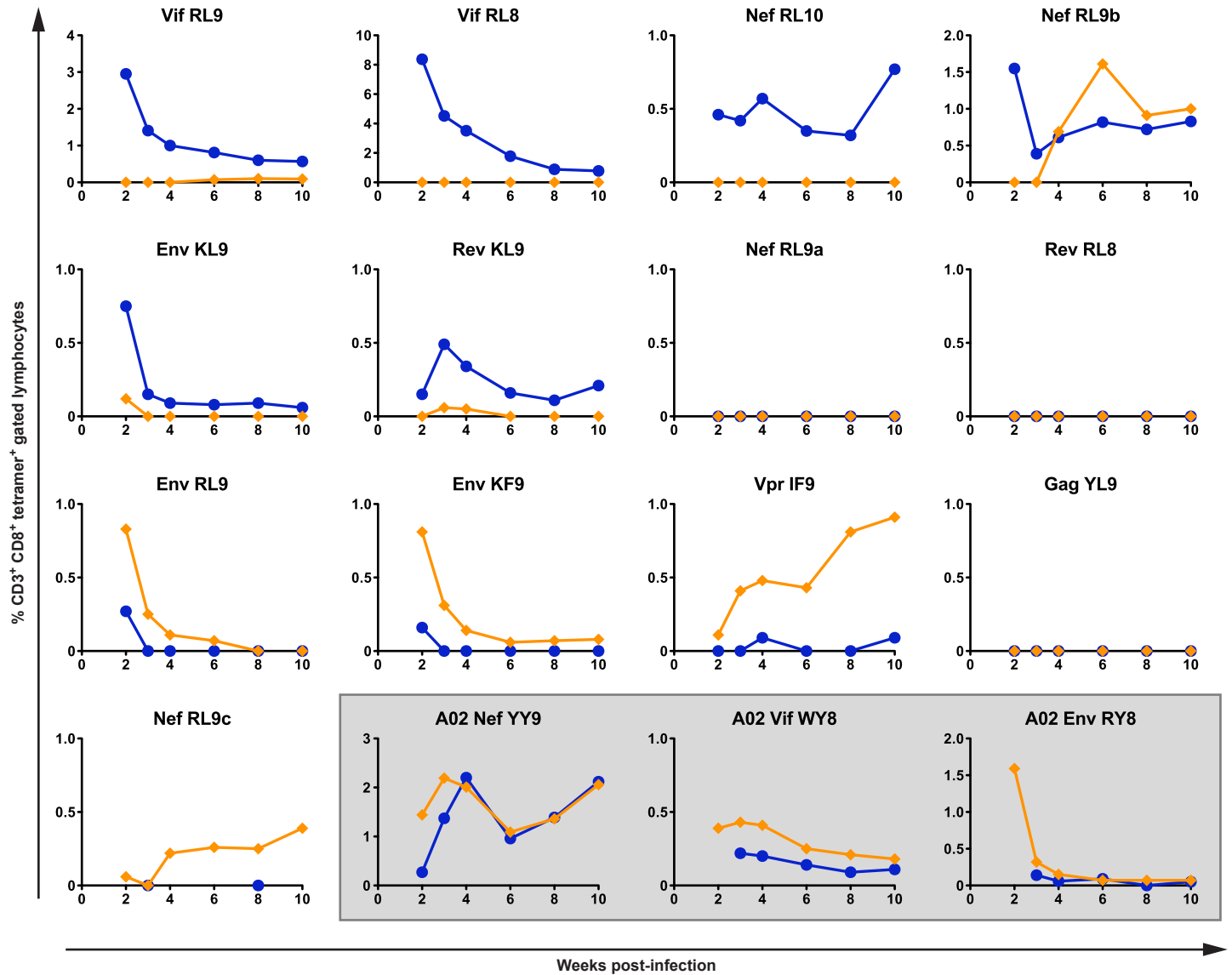
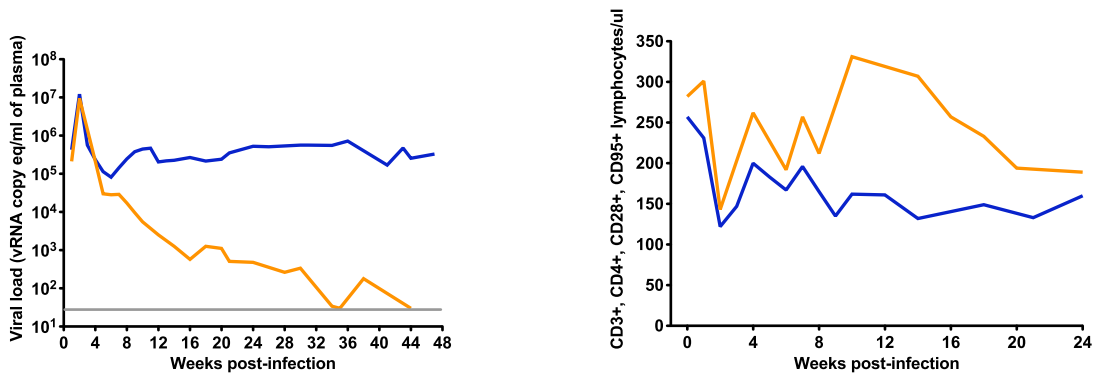


A. Mamu-B*08 and Mamu-A*02 tetramer comparison between r04135 (8X) and r02040 (WT)-infected macaques



B. Viral loads and central memory CD4 memory comparison of r04135 (8X) and r02040 (WT)-infected macaques



Supplemental Figure 1. Immunological and virological comparison between SIV-infected, MHC class I identical full siblings, r04135 (8X) and r02040 (SIVmac239-WT). Macaque r04135 is female and was four years old when infected with 8X virus, while r02040 is a male and was six years old when infected with SIVmac239-WT. A) Immune responses to Mamu-B*08-restricted epitopes are shown in addition to three Mamu-A*02-restricted CD8⁺ T cell responses that were followed with MHC class I tetramers. B) Viral load outcome of r04135 (elite controller) and r02040 (progressor) as well as absolute counts of central memory CD4⁺ T cells.