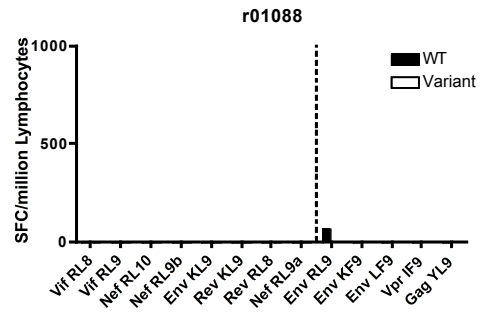
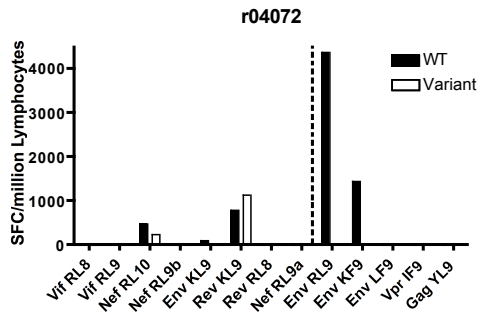
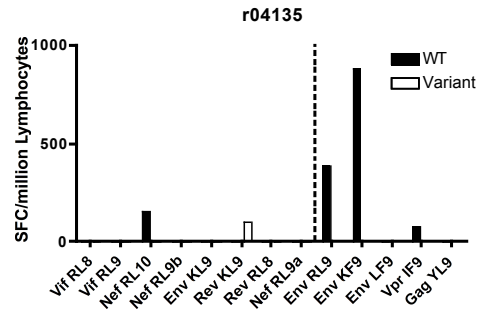
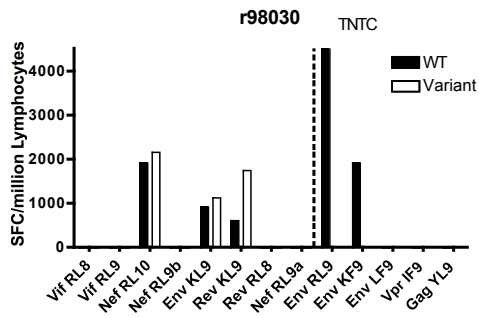


**Supplemental Figure 4. IFN- $\gamma$  ELISPOT reactivity in 8X-infected animals to Mamu-B\*08-restricted minimal peptides and variants at three weeks post-infection.** IFN- $\gamma$  ELISPOT was carried out on freshly-isolated PBMC. Both WT SIVmac239 peptides (black bars) and the variants of these peptides corresponding to the sequence in 8X (white bars) were tested. Reactivity to intact Mamu-B\*08-restricted epitopes is also shown; these epitopes are to the right of the dashed bar.



**Supplemental Figure 4 (continued). IFN- $\gamma$  ELISPOT reactivity in 8X-infected animals to Mamu-B\*08-restricted minimal peptides and variants at three weeks post-infection.**