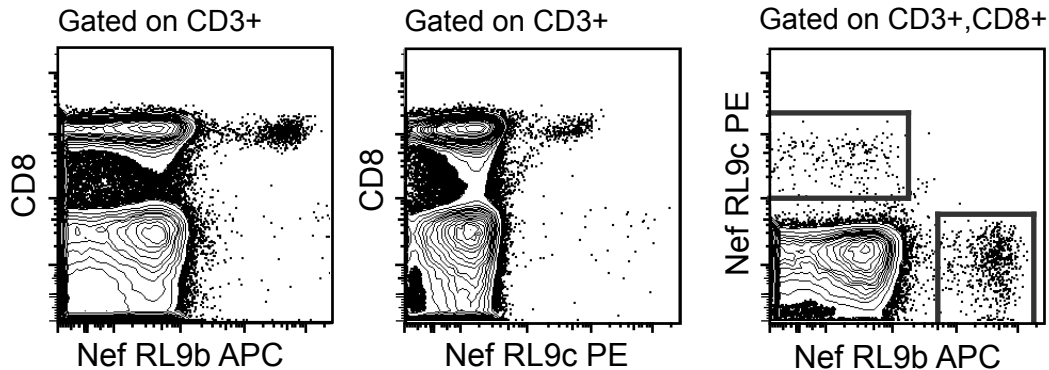


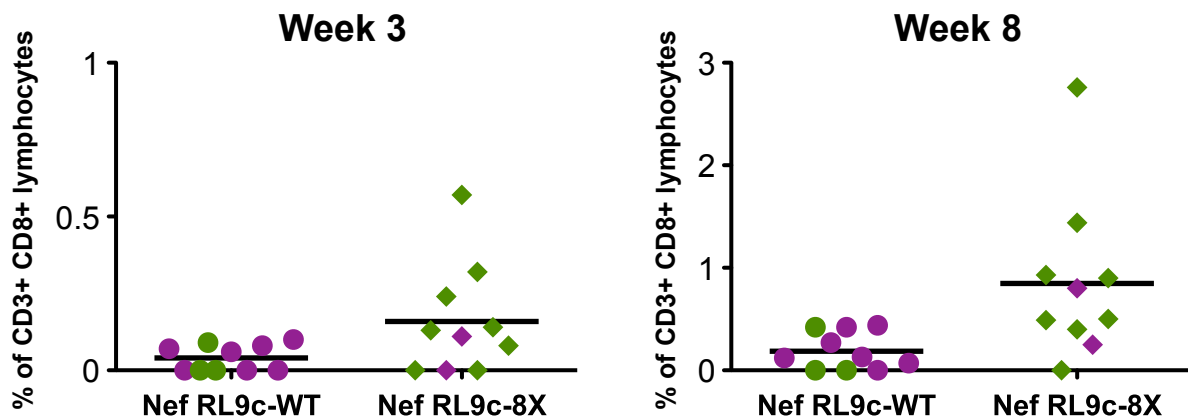
A. Elispot reactivity in 8X animals

- RRLTARGLL –defined Nef RL9b epitope, negative
- RRLTARGLP –8X variant of epitope, negative
- VRRRLTARGLL –positive
- VRRRLTARGL –positive
- RRRLTARGL –folded as tetramer, Nef RL9c

B. Dual tetramer stain of an animal making both responses



C. Tetramer responses in WT- and 8X-infected macaques



Supplemental Figure 5. Discovery of a novel Mamu-B*08-restricted epitope. A) Reactivity to a defined Mamu-B*08 minimal epitope or its 8X-variant was not typically observed in 8X-infected *Mamu-B*08+* macaques. Nine of ten animals responded to a pool containing an N-terminal extension of this peptide, and a tetramer was folded with the positive peptide with the highest Mamu-B*08 binding affinity. This 9-mer peptide overlaps with the previously defined Nef₂₄₆₋₂₅₄RL9b epitope by eight amino acids. B) Tetramer staining in an 8X-infected animal responding to both the Nef₂₄₆₋₂₅₄RL9b and Nef₂₄₅₋₂₅₃RL9c epitopes. Nef₂₄₆₋₂₅₄RL9b and Nef₂₄₅₋₂₅₃RL9c tetramers did not stain the same cells. C) Nef₂₄₅₋₂₅₃RL9c tetramer stain frequency in SIVmac239-WT and 8X-infected animals at three and eight weeks post-infection.