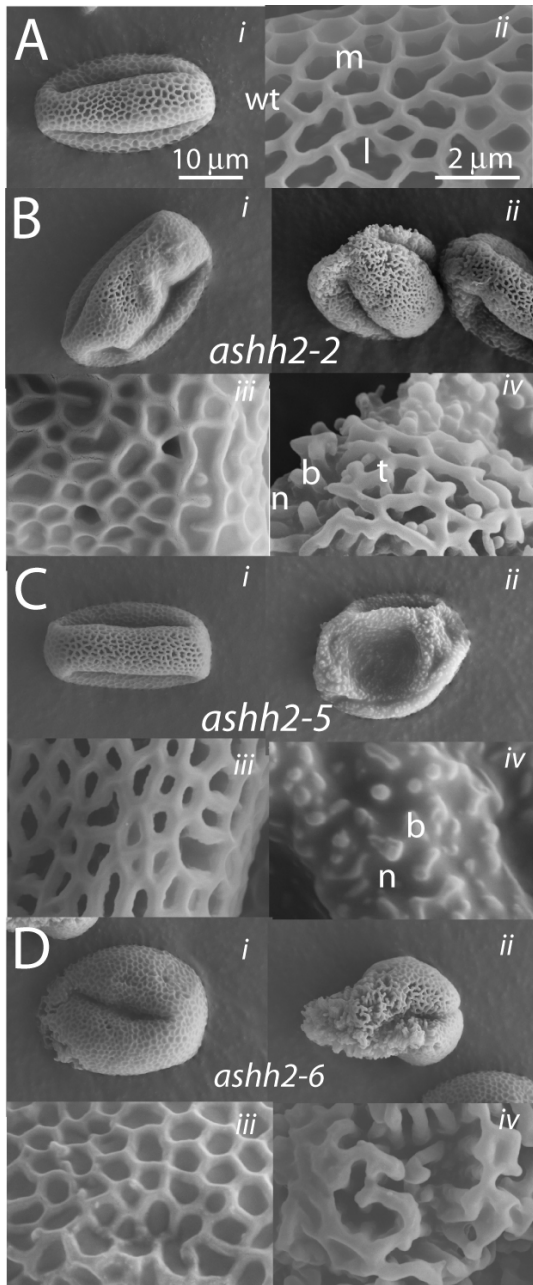


Figure S4. Scanning electron micrographs of *ashh2-2*, *ashh2-5* and *ashh2-6* pollen grains and exine layers.



(A) Wt pollen (*i*) with sexine layer (*ii*) with regular ridges (muri – m) and spaces (lumina – l).

(B) *ashh2-2* pollen grains (*i*, *ii*) and exine layers with filled muris (*iii*), and in severe cases (*iv*) irregular and distorted textum layer (t).

(C) *ashh2-5* pollen grains (*i*, *ii*) and exine layers with thicker muris (*iii*), and in severe cases (*iv*) absent tectum layer leading to disconnected bacula (b) and visible nexine layer (n).

(D) *ashh2-6* pollen grains (*i*, *ii*) and exine layers with filled muris (*iii*), and in severe cases (*iv*) irregular and distorted textum layer (t).