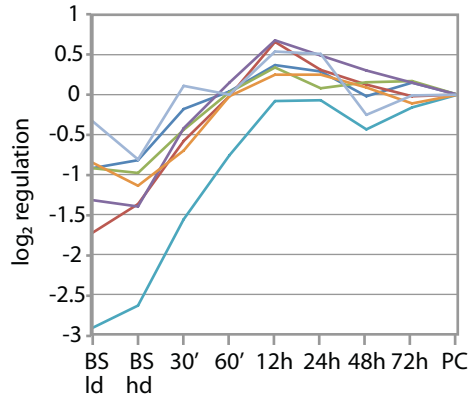
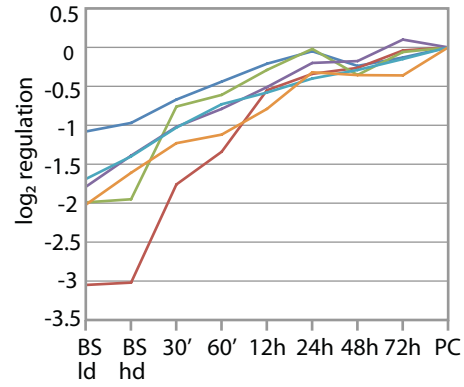
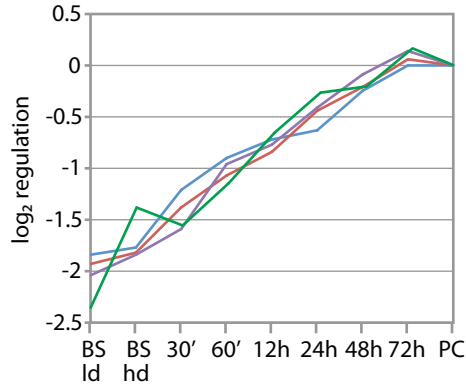


**A.**

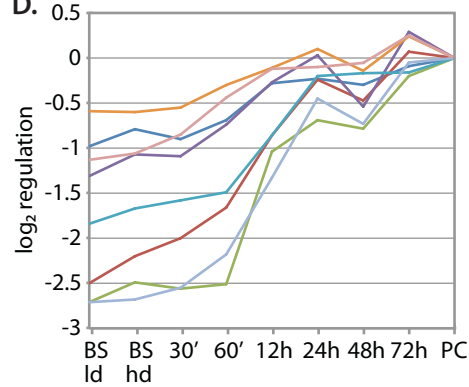
- Tb10.389.0890 pyruvate dehydrogenase
- Tb11.01.3550 2-oxoglutarate dehydrogenase, e2
- Tb10.6k15.3250 succinyl-coA ligase beta-chain
- Tb927.3.2230 succinyl-coA synthetase alpha subunit
- Tb927.8.6170 transketolase
- Tb11.02.0290 succinyl-coA:3-ketoacid-coenzyme A transferase
- Tb11.02.2280 cytochrome-c oxidase

**B.**

- Tb10.70.3150 NADH-ubiquinone oxidoreductase complex
- Tb10.70.5110 mitochondrial malate dehydrogenase
- Tb927.7.4970 glutamine synthetase
- Tb10.70.6340 ATPase subunit 9
- Tb10.100.0160 cytochrome oxidase subunit VI
- Tb927.3.1410 cytochrome oxidase subunit VII

**C.**

- Tb927.6.2790 L-threonine dehydrogenase
- Tb927.5.930 NADH-dependent fumarate reductase
- Tb927.3.1380 ATP synthase F1, beta subunit
- Tb927.7.7430 ATP synthase F1, alpha subunit

**D.**

- Tb927.7.3940 Mitochondrial carrier
- Tb927.1.4100 Cytochrome c oxidase
- Tb927.3.4500 fumarate hydratase
- Tb927.8.1420 acyl-coA dehydrogenase
- Tb10.6k15.2180 cytochrome c oxidase subunit IX
- Tb11.01.0610 mitochondrial DEAD-box helicase
- Tb927.5.1060 mitochondrial processing peptidase, beta subunit
- Tb11.02.5770 mitochondrial RNA binding protein RBP16

Supplementary figure S4. Regulation of mRNAs encoding mitochondrial proteins, grouped according to regulation pattern.