

**Supplementary Table 1** Meta-analysis including Sorbian, DGI and 58BC cohorts for SNPs with a P-value < 0.001 in the Sorbs

SNP	Z-score	Meta P-value	Direction	P-value Sorbs	P-value 58BC	P-value DGI
rs1976930	5.102	3.369E-07	+++	0.00049	0.0345	0.0013
rs7740575	-4.97	6.7E-07	---	8.17E-06	0.018	0.040
rs1569019	4.888	0.0000102	+++	0.00075	0.0587	0.0015
rs4557669	4.633	0.00003601	+++	0.00007	0.0419	0.0284
rs2471943	4.453	0.000008461	+++	0.00004	0.0305	0.0847
rs6984050	3.885	0.0001022	+++	0.00045	0.0768	0.0975
rs13251380	3.882	0.0001037	+++	0.00047	0.0568	0.1207
rs4560755	3.868	0.0001095	+++	0.00049	0.0698	0.1065
rs9456801	-3.786	0.0001534	---	0.00003	0.0928	0.2916
rs1542178	3.784	0.0001546	+++	0.00030	0.5183	0.0211
rs5771222	-3.753	0.0001745	---	0.00032	0.4800	0.0257
rs7450548	-3.739	0.0001846	---	0.00005	0.0736	0.3302
rs4091546	-3.734	0.0001886	---	0.00004	0.0769	0.3498
rs872683	-3.673	0.0002393	---	0.00017	0.8716	0.0160
rs10507349	3.565	0.0003639	+++	0.00093	0.1146	0.1378
rs3908324	-3.525	0.0004232	+/-	0.00023	0.8857	0.0128
rs817015	-3.513	0.0004437	-?-	0.00050		0.0842
rs137866	-3.509	0.0004495	---	0.00058	0.6238	0.0311
rs152837	3.507	0.0004527	+++	0.00032	0.8694	0.0223
rs7138495	3.504	0.0004585	+++	0.00023	0.5687	0.0582
rs371606	-3.474	0.0005133	+/-	0.00024	0.3728	0.0026
rs8056945	-3.433	0.0005966	---	0.00080	0.0271	0.4517
rs7966378	3.388	0.0007031	+++	0.00038	0.9888	0.0237
rs11195417	-3.347	0.0008164	---	0.00071	0.4241	0.0868
rs6930532	-3.341	0.0008361	---	0.00062	0.0616	0.4066
rs7966506	3.332	0.0008633	+++	0.00015	0.6716	0.0958
rs7966485	3.329	0.0008713	+++	0.00015	0.6987	0.0910
rs17690928	-3.319	0.000905	+/-	0.00032	0.8132	0.0204
rs17033062	-3.32	0.000907	---	6.71E-06	0.422	0.433
rs1795849	3.317	0.0009102	+++	0.00073	0.5261	0.0712
rs11646174	-3.292	0.0009933	---	0.00088	0.0403	0.4901
rs337865	3.26	0.001116	+++	0.00084	0.0180	0.7034
rs681761	3.254	0.001138	+++	0.00046	0.6084	0.0878
rs4761492	3.202	0.001366	+/-	0.00057	0.6399	0.0144
rs4835587	-3.195	0.001396	---	0.00058	0.1557	0.3409
rs11942278	3.169	0.00153	+++	0.00074	0.9914	0.0377
rs10123421	-3.169	0.001532	+/-	0.00033	0.1159	0.0016
rs12659589	-3.164	0.001558	---	0.00046	0.5371	0.1365
rs4556800	-3.14	0.001691	---	0.00046	0.0957	0.5307
rs11648369	-3.099	0.001943	---	0.00025	0.0881	0.6848
rs1552411	3.088	0.002017	+/-	0.00008	0.6213	0.0576
rs16987276	-3.085	0.002037	---	0.00054	0.0277	0.8783
rs4762485	3.077	0.002089	+++	0.00038	0.7111	0.1304
rs11110901	3.068	0.002158	+++	0.00066	0.6093	0.1322
rs1473467	3.045	0.002327	+/-	0.00008	0.4735	0.0446
rs4889018	-3.037	0.002386	---	0.00033	0.0655	0.7904
rs935119	3.033	0.002425	+?+	0.00048		0.2693
rs17126675	-3.026	0.002477	---	0.00095	0.7166	0.1011
rs2664355	-2.995	0.002748	---	0.00092	0.5100	0.1763
rs6499507	-2.968	0.002997	+/-	0.00003	0.6171	0.1238
rs17710226	2.966	0.003015	+++	0.00085	0.4243	0.2371
rs11842594	-2.961	0.003067	---	0.00063	0.1969	0.4705

rs9535786	2.956	0.003117	+++	0.00007	0.6482	0.3495
rs1281132	-2.944	0.003238	---	0.00037	0.9927	0.1108
rs17655374	-2.936	0.003323	---	0.00022	0.4928	0.3469
rs7196399	-2.934	0.003344	+ -	0.00005	0.6171	0.1128
rs7998770	2.933	0.00336	+++	0.00057	0.3339	0.3609
rs2058522	-2.903	0.003694	---	0.00030	0.5308	0.3148
rs9535867	2.901	0.003716	+++	0.00076	0.2930	0.3904
rs1373609	-2.856	0.004284	--+	0.00016	0.0505	0.8049
rs376563	2.835	0.004583	+++	0.00015	0.2744	0.6953
rs11011857	-2.808	0.004989	+ -	0.00028	0.2847	0.0290
rs9515075	2.804	0.005048	+++	0.00067	0.3385	0.4457
rs7989215	-2.767	0.005666	---	0.00037	0.6669	0.3188
rs8083086	2.754	0.005884	+++	0.00018	0.5526	0.4856
rs4346474	-2.747	0.006014	---	0.00023	0.3743	0.6134
rs1368589	-2.719	0.006541	--+	0.00073	0.0568	0.9241
rs713261	2.715	0.006629	+ +	0.00007	0.6609	0.2017
rs7539852	2.706	0.006807	+++	0.00065	0.7012	0.2888
rs10512079	2.699	0.006954	+++	0.00028	0.5953	0.4484
rs821366	2.698	0.006981	+++	0.00055	0.7045	0.3089
rs10863785	2.673	0.007524	+++	0.00078	0.6110	0.3408
rs11660242	-2.644	0.008201	---	0.00066	0.3146	0.6312
rs1469906	-2.643	0.008226	---	0.00062	0.5803	0.4103
rs9283747	2.632	0.008482	+++	0.00005	0.4948	0.8375
rs1835668	2.628	0.008576	+++	0.00015	0.3750	0.8019
rs12403352	-2.627	0.008625	+ -	0.00051	0.4391	0.0713
rs6957383	2.614	0.008944	+++	0.00003	0.7603	0.7164
rs7244606	-2.612	0.009004	---	0.00098	0.6169	0.3584
rs9531226	-2.609	0.009085	---	0.00040	0.7097	0.4111
rs4906835	-2.607	0.009133	+ -	0.00014	0.7801	0.2603
rs2994394	2.596	0.00943	+ +	0.00029	0.8262	0.2280
rs7500119	-2.593	0.009501	+ -	0.00003	0.4115	0.2109
rs11208264	-2.585	0.00975	---	0.00024	0.6072	0.5700
rs9498354	-2.579	0.009919	---	0.00054	0.2862	0.7710
rs7672790	-2.568	0.01023	--+	0.00036	0.0378	0.5416
rs11080598	-2.566	0.01028	---	0.00066	0.3580	0.6656
rs12709049	-2.558	0.01052	---	0.00089	0.1271	0.9960
rs7730024	2.555	0.01061	+++	0.00007	0.4718	0.9077
rs9860508	2.553	0.01069	+ -	0.00038	0.1442	0.8943
rs986389	2.541	0.01105	+++	0.00096	0.3495	0.6430
rs10892228	2.54	0.01109	+ -	0.00041	0.1870	0.9811
rs10859995	-2.539	0.01111	--+	0.00053	0.0558	0.6584
rs6715864	2.532	0.01135	+++	0.00095	0.3255	0.6830
rs10748568	2.522	0.01166	+ +	0.00043	0.9362	0.2865
rs7136406	2.506	0.01221	+++	0.00097	0.7440	0.3715
rs3176295	-2.5	0.01241	+ -	0.00052	0.4922	0.1213
rs4496483	2.483	0.01302	+ -	0.00023	0.1502	0.7476
rs11208265	-2.481	0.01309	---	0.00024	0.7434	0.5750
rs12059226	2.477	0.01326	+++	0.00041	0.7642	0.4933
rs9836009	2.473	0.0134	+ -	0.00038	0.1465	0.8058
rs11783436	2.468	0.01359	+ +	0.00031	0.5513	0.1863
rs6754390	2.468	0.0136	+ +	0.00001	0.6505	0.5306
rs3016551	2.468	0.0136	+++	0.00016	0.7705	0.6225
rs3755702	2.463	0.01379	+++	0.00002	0.7376	0.9557
rs2749100	-2.462	0.01381	---	0.00042	0.7152	0.5386
rs7916509	2.453	0.01418	+++	0.00012	0.6432	0.7882
rs11216833	2.446	0.01444	+ -	0.00067	0.1779	0.9332

rs12693990	-2.436	0.01485	---	0.00064	0.2378	0.9810
rs4837259	-2.428	0.0152	--+	0.00043	0.0995	0.6574
rs10951890	2.412	0.01586	+++	0.00016	0.7701	0.6874
rs9581589	2.405	0.01617	+ +-	0.00033	0.4806	0.1849
rs17067183	2.404	0.01621	+++	0.00048	0.3070	0.9687
rs7077236	2.395	0.01662	+ +-	0.00091	0.8427	0.2595
rs6650659	2.381	0.01728	++-	0.00045	0.1709	0.7758
rs2715416	-2.378	0.01739	---	0.00084	0.9267	0.3927
SNP_A-						
1841078	-2.375	0.01753	-?-	0.00095		0.6763
rs12618748	-2.373	0.01763	--+	0.00067	0.1850	0.8599
rs1886322	2.361	0.01823	+++	0.00044	0.8423	0.5451
rs7524424	2.359	0.01831	+++	0.00072	0.3417	0.9086
rs7545677	2.358	0.01837	+++	0.00066	0.3426	0.9232
rs7853919	2.347	0.0189	++-	0.00014	0.3251	0.7934
rs7666924	2.323	0.02017	+++	0.00084	0.9387	0.4325
rs7753779	-2.317	0.0205	---	0.00042	0.8305	0.6034
rs651245	2.31	0.0209	+ +-	0.00098	0.7108	0.2487
rs6462085	-2.292	0.02192	--+	0.00059	0.3030	0.9272
rs198090	2.287	0.02218	+++	0.00058	0.6984	0.6858
rs4131198	-2.279	0.02265	---	0.00094	0.8563	0.5077
rs10756301	2.274	0.02295	+ +-	0.00050	0.5500	0.2568
rs12943914	-2.273	0.023	+ -	0.00079	0.1635	0.0633
rs964841	-2.273	0.02301	+ -	0.00087	0.3732	0.1387
rs808994	-2.266	0.02346	---	0.00058	0.4922	0.8904
rs17564083	2.251	0.02438	++-	0.00073	0.2087	0.7747
rs10461627	2.249	0.02448	+?+	0.00054		0.8940
rs12608495	-2.249	0.02448	---	0.00055	0.4411	0.9707
rs1151448	-2.238	0.02519	---	0.00044	0.7556	0.7379
rs4762486	2.23	0.02578	+ +-	0.00035	0.8886	0.5298
rs6787683	2.216	0.02667	++-	0.00019	0.3819	0.7535
rs9992452	-2.213	0.02692	+ -	0.00039	0.9707	0.5844
rs6507141	2.211	0.02701	++-	0.00092	0.2819	0.8797
rs11678905	2.21	0.02711	+ +-	0.00087	0.5632	0.2544
rs17511481	2.204	0.02749	++-	0.00003	0.2749	0.4078
rs1750410	2.2	0.02778	++-	0.00049	0.2063	0.6497
rs6703955	2.177	0.02947	++-	0.00066	0.3426	0.8612
rs9545074	-2.169	0.03012	+ -	0.00028	0.1029	0.0951
rs4299478	-2.162	0.03059	---	0.00026	0.7908	0.8854
rs6463385	2.162	0.03066	+ +-	0.00022	0.7932	0.5966
rs4974444	-2.159	0.03086	--+	0.00016	0.7385	0.9892
rs11110954	2.152	0.03139	++-	0.00001	0.3011	0.2965
rs487060	2.148	0.03168	+++	0.00089	0.8116	0.6839
rs12973614	-2.14	0.03235	+ -	0.00094	0.1472	0.0817
rs4674965	-2.138	0.03255	+ -	0.00098	0.7748	0.4077
rs241333	2.136	0.03266	+ +-	0.00055	0.2921	0.1919
rs6577461	2.134	0.0328	++-	0.00041	0.4194	0.8213
rs4886089	2.134	0.03288	+ +-	0.00096	0.2232	0.1205
rs2369967	-2.132	0.03302	---	0.00026	0.8368	0.8797
rs11110939	2.128	0.03337	++-	0.00003	0.2931	0.3353
rs11110931	2.128	0.03337	++-	0.00002	0.3057	0.3418
rs6807093	-2.128	0.03338	-?-	0.00083		0.9421
rs11110928	2.117	0.03429	++-	0.00003	0.2931	0.3271
rs10499722	2.114	0.03451	+ +-	0.00014	0.8836	0.7852
rs4487238	-2.113	0.0346	--+	0.00002	0.3636	0.3696
rs2417862	-2.105	0.03525	--+	0.00063	0.3627	0.7937

rs16839984	-2.09	0.03658	--+	0.00002	0.3708	0.3655
rs2029830	2.09	0.03658	+++	0.00074	0.8031	0.7861
rs11110926	2.089	0.03672	++-	0.00006	0.3772	0.4675
rs2966339	2.087	0.03686	++-	0.00042	0.1564	0.4380
rs9292674	2.081	0.03747	+++	0.00046	0.7716	0.9014
rs7793437	-2.079	0.03764	--+	0.00074	0.1937	0.5654
rs4851391	-2.078	0.03771	-+-	0.00026	0.3415	0.3260
rs7273527	-2.071	0.03834	--+	0.00091	0.0365	0.2433
rs876060	-2.068	0.03863	-+-	0.00020	0.2846	0.3112
rs1545240	2.058	0.03957	+++	0.00098	0.6391	0.9113
rs11152292	-2.056	0.03975	--+	0.00047	0.1909	0.4778
rs9817813	-2.055	0.03988	--+	0.00002	0.3752	0.3250
rs1526383	2.054	0.03994	++-	0.00035	0.5747	0.8507
rs3747600	-2.05	0.04041	-+-	0.00042	0.3949	0.3388
rs11891218	2.048	0.04053	+++	0.00017	0.9899	0.9246
rs5746906	2.047	0.04066	++-	0.00077	0.6539	0.4436
rs187930	2.041	0.04125	++-	0.00032	0.5998	0.5286
rs16892538	2.036	0.04172	++-	0.00063	0.3064	0.6500
rs16841428	-2.031	0.04223	-+-	0.00086	0.2300	0.1732
rs10075495	-2.028	0.04255	--+	0.00032	0.5622	0.7935
rs4850966	-2.025	0.0429	--+	0.00039	0.5445	0.8081
rs2215595	-2.024	0.04297	--+	0.00086	0.1362	0.4395
rs11639793	2.021	0.04323	+++	0.00099	0.6199	0.9700
rs10935042	-2.018	0.04358	---	0.00053	0.8938	0.8548
rs1684600	-2.009	0.04459	-+-	0.00040	0.5057	0.4597
rs1591581	-2.001	0.04535	-++	0.00002	0.9635	0.7611
rs9864890	-1.992	0.04639	--+	0.00003	0.3422	0.3011
rs7724511	1.978	0.04793	++-	0.00075	0.9157	0.6977
rs11862530	-1.978	0.04796	-+-	0.00026	0.4504	0.4992
rs1864268	1.975	0.04828	++-	0.00008	0.3906	0.4080
rs7636123	-1.965	0.04945	--+	0.00003	0.3557	0.2909
rs10751481	1.963	0.04964	++-	0.00042	0.1828	0.3720
rs860360	1.96	0.05001	++-	0.00023	0.9276	0.9683
rs1722361	1.956	0.05045	++-	0.00029	0.2374	0.3159
rs7633217	-1.951	0.05108	---	0.00055	0.8997	0.9245
rs1860198	1.95	0.05114	++-	0.00055	0.7727	0.9752
rs11712570	-1.947	0.05158	---	0.00032	0.9789	0.9534
rs17021660	1.945	0.05179	++-	0.00080	0.8363	0.6673
rs3893314	1.939	0.05249	++-	0.00090	0.6316	0.9252
rs17261195	1.928	0.0539	++-	0.00021	0.6116	0.6612
rs10860760	1.926	0.05405	++-	0.00003	0.3083	0.2202
rs6714879	1.925	0.05418	++-	0.00083	0.1677	0.1819
rs6807522	-1.914	0.05558	--+	0.00064	0.3344	0.5560
rs172355	-1.904	0.05686	-+-	0.00014	0.4183	0.6286
rs12200432	-1.899	0.05763	-+-	0.00057	0.4872	0.5002
rs12521697	-1.895	0.05804	-+-	0.00023	0.4125	0.5644
rs707025	-1.89	0.05876	-+-	0.00014	0.7034	0.9041
rs17717216	-1.889	0.05886	--+	0.00065	0.3075	0.5047
rs241301	1.878	0.06039	++-	0.00064	0.2878	0.3372
rs909349	1.873	0.06109	++-	0.00016	0.4411	0.6598
rs10509650	-1.868	0.0618	-+-	0.00016	0.1038	0.2699
rs1040887	-1.863	0.06252	--+	0.00040	0.5157	0.6068
rs825090	1.856	0.06339	+--	0.00016	0.9987	0.8427
rs4586937	1.853	0.06384	++-	0.00022	0.4225	0.6229
rs11766511	1.852	0.06397	++-	0.00100	0.5543	0.5191
rs6040277	-1.843	0.06535	--+	0.00055	0.4878	0.6073

rs11778878	1.836	0.06637	++-	0.00095	0.5782	0.7672
rs12489933	-1.833	0.06683	-+-	0.00060	0.9251	0.9095
rs735403	1.827	0.06763	+-+	0.00021	0.4535	0.6825
rs9309009	-1.827	0.06767	-+-	0.00027	0.1895	0.3694
rs935537	-1.823	0.06823	-+-	0.00031	0.7693	0.9085
rs7811179	-1.817	0.06929	--+	0.00026	0.6582	0.6078
rs9369440	-1.815	0.06955	-+-	0.00045	0.7398	0.8304
rs10910445	-1.808	0.07057	-+-	0.00057	0.5416	0.6363
rs2156044	1.808	0.07061	++-	0.00069	0.6716	0.7604
rs10817917	-1.805	0.07104	--+	0.00094	0.2583	0.4247
rs11654328	1.795	0.07265	++-	0.00040	0.8652	0.8095
rs9802436	1.792	0.0732	+-+	0.00099	0.2468	0.3173
rs10123800	-1.786	0.07403	--+	0.00071	0.2172	0.3320
rs11772083	1.777	0.07564	++-	0.00013	0.6377	0.4628
rs10865499	1.773	0.07631	+-+	0.00039	0.6386	0.8203
rs4276727	1.767	0.07727	++-	0.00048	0.0926	0.1503
rs6601002	1.76	0.07842	++-	0.00082	0.0380	0.1004
rs2381759	1.758	0.07867	+-+	0.00080	0.2985	0.4191
rs11080303	1.758	0.07883	++-	0.00085	0.8741	0.9017
rs17818622	-1.754	0.07935	--+	0.00083	0.7611	0.8039
rs3733202	1.751	0.07995	+-+	0.00024	0.4258	0.7208
rs6677151	-1.747	0.08068	--+	0.00060	0.7029	0.6951
rs10448341	1.745	0.08102	++-	0.00094	0.1745	0.2851
rs4965458	1.745	0.08106	+-+	0.00013	0.1471	0.4568
rs10233586	1.739	0.08203	++-	0.00003	0.8377	0.3846
rs12685159	1.722	0.08512	+-+	0.00075	0.5094	0.6591
rs4743860	1.719	0.0857	+-+	0.00038	0.5563	0.8165
rs10500769	-1.715	0.08642	-+-	0.00071	0.3792	0.5551
rs7665090	1.713	0.0867	+-+	0.00034	0.4762	0.7616
rs216657	-1.712	0.08696	-+-	0.00098	0.1373	0.2560
rs17548372	-1.708	0.08766	-+-	0.00098	0.2910	0.4283
rs2134268	-1.704	0.08834	-+-	0.00066	0.3593	0.5549
rs2108546	-1.7	0.08905	-+-	0.00087	0.1851	0.3342
rs17753534	1.699	0.08926	+-+	0.00071	0.4734	0.6591
rs11206628	1.698	0.08943	++-	0.00075	0.7222	0.6912
rs12679719	-1.695	0.09002	++-	0.00058	0.9382	0.9086
rs1576672	-1.694	0.09019	--+	0.00002	0.5883	0.1974
rs2222807	1.692	0.09062	+--	0.00016	0.7559	0.8380
rs10993556	-1.685	0.09199	-+-	0.00055	0.3651	0.6091
rs10888935	1.683	0.09232	++-	0.00067	0.7663	0.6912
rs12818068	1.663	0.09625	+-+	0.00024	0.3129	0.6986
rs16953178	-1.657	0.09761	++-	0.00002	0.5030	0.7093
rs11116725	-1.651	0.09868	--+	0.00056	0.3165	0.2984
rs2886725	1.64	0.101	++-	0.00050	0.9612	0.7427
rs13234751	-1.64	0.101	--+	0.00085	0.9092	0.7914
rs17669013	1.64	0.1011	+--	0.00029	0.7695	0.8658
rs17148373	1.629	0.1034	+?-	0.00048		0.4949
rs3778958	1.629	0.1034	++-	0.00087	0.5756	0.5283
rs2049149	-1.627	0.1038	-+-	0.00020	0.3395	0.7948
rs10506459	1.609	0.1077	++-	0.00064	0.8981	0.6986
rs16996381	-1.606	0.1083	-+-	0.00051	0.1807	0.4707
rs1919813	1.605	0.1085	+--	0.00035	0.7706	0.8495
rs4933411	1.602	0.1092	+-+	0.00033	0.5409	0.9622
rs12298127	-1.589	0.112	++-	0.00014	0.5962	0.8313
rs2863243	1.581	0.114	+--	0.00011	0.5924	0.7888
rs10518389	-1.578	0.1145	++-	0.00064	0.7440	0.9432

rs153822	-1.573	0.1156	---	0.00081	0.7628	0.9622
rs6544089	1.572	0.1159	---	0.00051	0.4124	0.7954
rs12489937	-1.57	0.1164	---	0.00042	0.9251	0.7195
rs1317138	1.57	0.1164	---	0.00095	0.6328	0.5259
rs2354354	1.563	0.1181	---	0.00048	0.4776	0.8843
rs1104532	1.553	0.1204	---	0.00076	0.4700	0.3678
rs7663154	-1.539	0.1239	---	0.00063	0.2278	0.5758
rs10035262	-1.539	0.1239	---	0.00081	0.6715	0.5002
rs1002533	-1.536	0.1246	---	0.00075	0.8976	0.6446
rs2026834	-1.534	0.125	---	0.00031	0.4687	0.9834
rs1394279	1.531	0.1258	---	0.00082	0.4758	0.3626
rs3778948	1.529	0.1264	---	0.00088	0.6136	0.4633
rs2164580	1.525	0.1272	---	0.00083	0.9457	0.7650
rs7866312	-1.523	0.1277	---	0.00052	0.4767	0.3081
rs8832	-1.521	0.1283	---	0.00089	0.9650	0.7047
rs431747	-1.517	0.1294	---	0.00086	0.4053	0.7660
rs4933415	1.51	0.131	---	0.00046	0.5143	0.9891
rs17125793	-1.509	0.1312	---	0.00100	0.7776	0.5763
rs7415831	-1.505	0.1324	---	0.00094	0.7229	0.5248
rs271415	1.497	0.1343	---	0.00027	0.3993	0.9761
rs4402506	1.494	0.1353	---	0.00078	0.7617	0.5131
rs8102279	-1.493	0.1355	---	0.00025	0.7722	0.6695
rs7666727	1.491	0.1361	---	0.00027	0.3596	0.1723
rs7389827	1.49	0.1363	---	0.00061	0.2648	0.1754
rs6835151	1.486	0.1373	---	0.00096	0.4864	0.3521
rs6890057	-1.484	0.1378	---	0.00082	0.5601	0.9666
rs637612	1.476	0.14	---	0.00051	0.4328	0.9310
rs10462707	-1.469	0.1418	---	0.00044	0.6494	0.8297
rs2289548	1.468	0.142	---	0.00056	0.3776	0.8630
rs735404	1.465	0.1429	---	0.00037	0.4035	0.9646
rs12092202	1.453	0.1462	---	0.00079	0.9007	0.7092
rs446291	1.452	0.1466	---	0.00093	0.4848	0.9103
rs6683030	-1.434	0.1515	---	0.00004	0.9091	0.2409
rs9531255	-1.431	0.1523	---	0.00009	0.8289	0.2597
rs1004811	1.425	0.154	---	0.00019	0.7375	0.2836
rs9296115	1.421	0.1552	---	0.00077	0.6072	0.3518
rs497898	-1.415	0.1569	---	0.00023	0.9128	0.4839
rs1572484	-1.413	0.1577	---	0.00004	0.9499	0.2445
rs3847769	-1.408	0.1591	---	0.00060	0.4728	0.2432
rs3778968	1.396	0.1627	---	0.00082	0.5756	0.3219
rs17249909	-1.394	0.1634	---	0.00031	0.5982	0.2412
rs7728453	-1.387	0.1656	---	0.00061	0.6802	0.7618
rs11100491	-1.382	0.167	---	0.00016	0.3678	0.8435
rs3013688	-1.381	0.1672	---	0.00030	0.7837	0.5705
rs7825402	1.38	0.1676	---	0.00080	0.9474	0.5991
rs17018130	1.376	0.169	---	0.00079	0.7493	0.4002
rs3778957	1.374	0.1694	---	0.00081	0.5756	0.3043
rs6564307	-1.373	0.1698	---	0.00097	0.1274	0.5117
rs6917809	-1.368	0.1714	---	0.00073	0.9911	0.5321
rs17698336	1.363	0.1728	---	0.00056	0.6545	0.7421
rs13262005	-1.363	0.1729	---	0.00058	0.6868	0.3216
rs8059013	1.358	0.1744	---	0.00002	0.5525	0.3800
rs16908769	1.34	0.1801	---	0.00015	0.0430	0.5356
rs10911810	1.339	0.1805	---	0.00071	0.8560	0.4192
rs3985696	1.33	0.1835	---	0.00065	0.6015	0.7741
rs10495455	-1.322	0.1862	---	0.00076	0.5263	0.8604

rs16908826	1.32	0.1867	+-+	0.00050	0.0430	0.4082
rs1701698	-1.318	0.1876	++	0.00022	0.4644	0.7165
rs7970805	-1.317	0.1877	++	0.00070	0.6633	0.7196
rs2171226	1.311	0.19	+--	0.00002	0.4872	0.3823
rs10960309	1.307	0.1913	++	0.00095	0.2706	0.8271
rs7695587	-1.306	0.1915	--+	0.00085	0.8364	0.4011
rs1854445	1.303	0.1926	+--	0.00039	0.4850	0.7674
rs11161464	-1.303	0.1926	++	0.00095	0.8185	0.6346
rs17233214	-1.302	0.193	++	0.00028	0.4625	0.7379
rs6677714	-1.301	0.1933	++	0.00065	0.4990	0.8350
rs1248631	1.293	0.1959	+-	0.00039	0.7814	0.2805
rs6735216	-1.283	0.1996	--+	0.00031	0.7316	0.2315
rs7938154	1.281	0.2001	+--	0.00074	0.5768	0.7625
rs10747190	-1.271	0.2036	++	0.00047	0.7955	0.5154
rs11150194	-1.262	0.207	+--	0.00065	0.0265	0.3411
rs11113221	-1.262	0.2071	+--	0.00057	0.1770	0.8140
rs978844	-1.262	0.2071	++	0.00061	0.3363	0.9549
rs11649483	-1.259	0.2081	+--	0.00050	0.0703	0.5712
rs154448	1.25	0.2113	+--	0.00086	0.4290	0.8949
rs1539199	-1.246	0.2128	++	0.00072	0.4327	0.8559
rs1123315	-1.245	0.2131	--+	0.00009	0.7304	0.1338
rs10500905	-1.244	0.2134	++	0.00051	0.4098	0.8191
rs6827644	-1.243	0.214	--+	0.00086	0.4802	0.1845
rs1248630	1.24	0.2149	+-	0.00031	0.8984	0.2764
rs395136	-1.24	0.2149	++	0.00044	0.6922	0.5470
rs12447678	-1.233	0.2174	++	0.00051	0.3993	0.8182
rs797206	-1.231	0.2182	++	0.00050	0.6386	0.5951
rs1352149	1.218	0.2234	+--	0.00002	0.4846	0.3231
rs367015	-1.217	0.2234	++	0.00046	0.7398	0.4959
rs4149570	-1.209	0.2266	++	0.00063	0.4293	0.7933
rs3756020	-1.204	0.2284	++	0.00030	0.4216	0.6808
rs11742890	-1.204	0.2285	++	0.00084	0.7511	0.5609
rs17110076	-1.193	0.2328	--+	0.00023	0.7104	0.1574
rs12062935	-1.19	0.234	++	0.00028	0.6524	0.4639
rs4728425	1.189	0.2345	+-	0.00086	0.6796	0.2394
rs2072504	-1.178	0.2387	++	0.00054	0.3916	0.7735
rs224126	1.177	0.2392	+--	0.00014	0.9905	0.2151
rs6749888	-1.171	0.2417	--+	0.00054	0.8302	0.2511
rs3094303	-1.158	0.2469	+--	0.00026	0.0068	0.3216
rs4142073	1.145	0.2521	+?-	0.00052		0.2009
rs13332543	-1.137	0.2556	++	0.00024	0.3651	0.6315
rs16834081	-1.134	0.2566	++	0.00025	0.5696	0.4596
rs797201	-1.128	0.2595	++	0.00056	0.5684	0.5583
rs3013689	-1.119	0.2631	++	0.00062	0.7533	0.4369
rs3013685	-1.118	0.2634	++	0.00069	0.7533	0.4494
rs797208	-1.114	0.2651	++	0.00065	0.7004	0.4730
rs6587622	-1.102	0.2703	--+	0.00100	0.4104	0.1104
rs12932883	-1.098	0.2723	+--	0.00076	0.0525	0.6041
rs12908729	-1.089	0.2762	++	0.00024	0.9508	0.2244
SNP_A-						
2028734	1.057	0.2905	+?-	0.00073		0.1864
rs4889814	-1.053	0.2923	--+	0.00070	0.9491	0.2513
rs10805227	-1.03	0.3031	--+	0.00061	0.3174	0.0509
rs11942384	-1.03	0.3032	--+	0.00075	0.3174	0.0563
rs3812591	-1.029	0.3034	++	0.00090	0.5691	0.5287
rs791995	-1.023	0.3061	--+	0.00089	0.1709	0.0300

rs10152711	-1.02	0.3076	++	0.00015	0.9508	0.1573
rs11703384	-1.013	0.3109	++	0.00055	0.1718	0.8949
rs7799805	1.01	0.3124	+-	0.00051	0.7581	0.1406
rs7692604	-1.01	0.3127	++	0.00085	0.7283	0.3967
rs17018646	-1.005	0.3147	+-	0.00060	0.0238	0.5616
rs6946440	1	0.3175	+-	0.00020	0.6197	0.2935
rs772475	-0.99	0.3221	+-	0.00077	0.1366	0.9974
rs1919814	0.99	0.3223	+-	0.00039	0.7739	0.2746
rs9662096	-0.989	0.3228	++	0.00057	0.7137	0.3432
rs8138344	-0.985	0.3246	++	0.00024	0.7330	0.2486
rs7310544	0.977	0.3286	++	0.00042	0.0742	0.0045
rs569953	-0.974	0.3302	++	0.00032	0.0963	0.9431
rs17025554	-0.949	0.3428	++	0.00071	0.2976	0.6677
rs650169	0.942	0.3461	+-	0.00030	0.7911	0.2187
rs473490	-0.911	0.3622	++	0.00049	0.3274	0.5387
rs1120533	0.901	0.3675	++	0.00058	0.0827	0.9957
rs11622794	0.888	0.3747	+-	0.00085	0.3881	0.5342
rs17374354	0.885	0.3764	+-	0.00061	0.0844	0.9857
rs2812426	0.869	0.3847	+-	0.00028	0.4979	0.3018
rs7974231	-0.86	0.3901	+-	0.00054	0.4677	0.0438
rs1659390	0.852	0.3942	+-	0.00084	0.9120	0.2036
rs1438929	-0.839	0.4015	++	0.00068	0.1958	0.6872
rs1248627	0.836	0.403	+-	0.00026	0.6044	0.2225
rs7961094	0.83	0.4063	+-	0.00091	0.4711	0.4209
rs10104810	-0.821	0.4114	+-	0.00028	0.0097	0.6843
SNP_A-						
1918836	0.82	0.4121	+-	0.00075		0.1061
rs1344967	0.82	0.4123	+-	0.00024	0.5601	0.2259
rs8007153	0.813	0.4165	+-	0.00059	0.0605	0.9899
rs7535375	0.81	0.4178	+-	0.00063	0.8525	0.1026
rs2812431	0.802	0.4225	+-	0.00023	0.5506	0.2178
rs2812429	0.789	0.4302	+-	0.00042	0.5868	0.2397
rs11123202	-0.785	0.4322	+-	0.00043	0.7427	0.0629
rs12446286	-0.781	0.4345	++	0.00028	0.4672	0.2614
rs11101238	-0.777	0.4373	++	0.00056	0.2214	0.5520
rs1240273	0.774	0.4389	+-	0.00018	0.2704	0.3551
rs4302584	-0.768	0.4422	++	0.00062	0.5457	0.2825
rs2032033	0.765	0.4445	+-	0.00092	0.8887	0.1137
rs11956352	-0.754	0.4508	++	0.00057	0.5169	0.2804
rs7522053	0.745	0.4564	+-	0.00075	0.8391	0.0879
rs6667717	0.736	0.4617	+-	0.00082	0.9035	0.1024
rs9970096	0.726	0.4677	+-	0.00092	0.8623	0.0958
rs10170591	-0.725	0.4683	++	0.00087	0.3104	0.4592
rs11067660	-0.705	0.4808	++	0.00095	0.9360	0.1364
rs2774511	0.695	0.4868	+-	0.00059	0.5160	0.0289
rs812796	-0.663	0.5075	+-	0.00093	0.4572	0.3007
rs1261990	0.663	0.5076	+-	0.00017	0.5797	0.1247
rs847000	0.642	0.5206	+-	0.00011	0.6246	0.0896
rs1438928	-0.633	0.5265	++	0.00050	0.2478	0.3748
rs1240276	0.609	0.5427	+-	0.00021	0.1870	0.3303
rs1457440	-0.608	0.5435	+-	0.00047	0.0112	0.8793
rs13148787	0.574	0.566	+-	0.00035	0.3966	0.1963
rs2435969	-0.57	0.5687	+-	0.00039	0.0017	0.5932
rs3904459	-0.52	0.6031	++	0.00092	0.9197	0.0789
rs1602204	-0.508	0.6113	++	0.00093	0.1540	0.4670
rs261771	0.503	0.6153	+-	0.00048	0.4740	0.1498

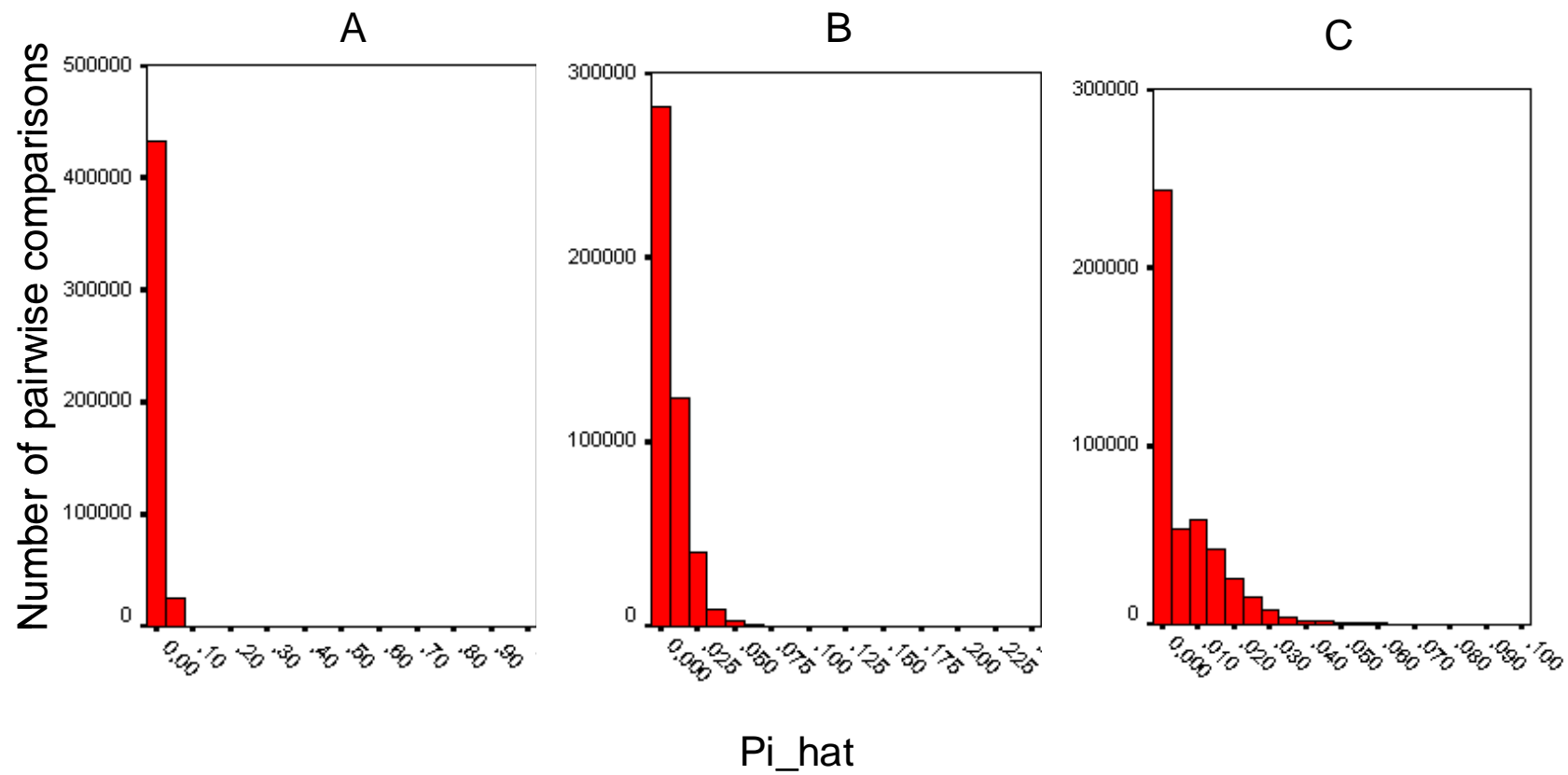


rs6818391	0.488	0.6257	-++	0.00080	0.1721	0.0215
rs224035	0.48	0.6315	+--	0.00067	0.7932	0.0786
rs359763	-0.457	0.6477	-+-	0.00072	0.0027	0.7000
rs6771167	0.388	0.6977	+--	0.00096	0.0289	0.7653
rs3209160	-0.336	0.7372	+--	0.00055	0.0382	0.1105
rs3799339	-0.198	0.8429	+--	0.00023	0.1747	0.0330
rs915200	-0.169	0.866	-++	0.00040	0.3212	0.0788
rs1543940	-0.162	0.871	-++	0.00040	0.1555	0.1527
rs1538974	0.065	0.9485	+--	0.00029	0.0261	0.3121
rs17148591	-0.039	0.9692	+--	0.00099	0.3683	0.0513
rs1226485	-0.034	0.9731	-++	0.00070	0.6099	0.0262
rs2236091	0.026	0.9793	+--	0.00030	0.1333	0.1030
rs11583715	0.018	0.9854	+--	0.00045	0.0539	0.2222
rs17748239	0.012	0.9903	+--	0.00034	0.0319	0.2637
rs11585959	0.011	0.9911	+--	0.00023	0.0246	0.2657
rs10759217	0.004	0.9966	+--	0.00053	0.1477	0.1126

Meta-analysis of three GWAS (Sorbs, N=929, 58BC, N=1490 and DGI, N=1496). Only SNPs associated with P-values <0.001 with adult height in the Sorbian sample were included in this analysis. P-values in the Sorbian cohort are corrected for age, gender, genomic control inflation factor ( $\lambda=1.31$ ) and the first four vectors of multidimensional scaling. + / - indicates the effect direction relative to the minor allele.

Supplementary Figure 1

Histogram of pairwise IBD of all Sorbian subjects included in the analyses. A) all subjects, B)  $\pi_{\text{hat}} < 0.25$ , C)  $\pi_{\text{hat}} < 0.1$



Supplementary Figure 2

QQ-Plot before and after correction for genomic control ( $\lambda=1.31$ )

