

Supplemental Information Figure Legend

Fig. 1. Immunohistochemistry for insulin (green) and MafA (red) in the islets of 20 week old mice. MafA was observed only in the nucleus of β -cells in wt-GPx(-), wt-GPx(+) mice, and *db/db*-GPx(+) mice (n=3). (magnification is 40x).

Fig. 2. Immunohistochemistry for insulin (green) and PDX-1 (red) in the islets of 20 week old mice. PDX-1 was observed in the nucleus of β -cells among all the groups of mice (n=3). (magnification is 40x).

Figure 1.

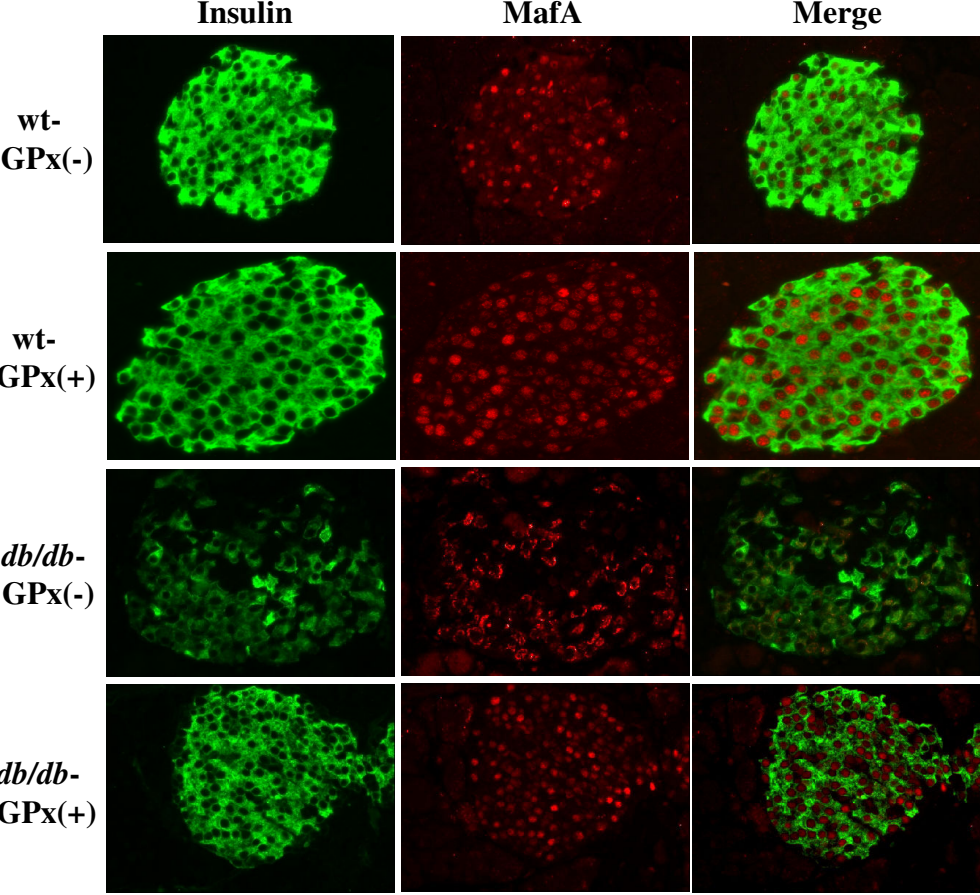


Figure 2.

