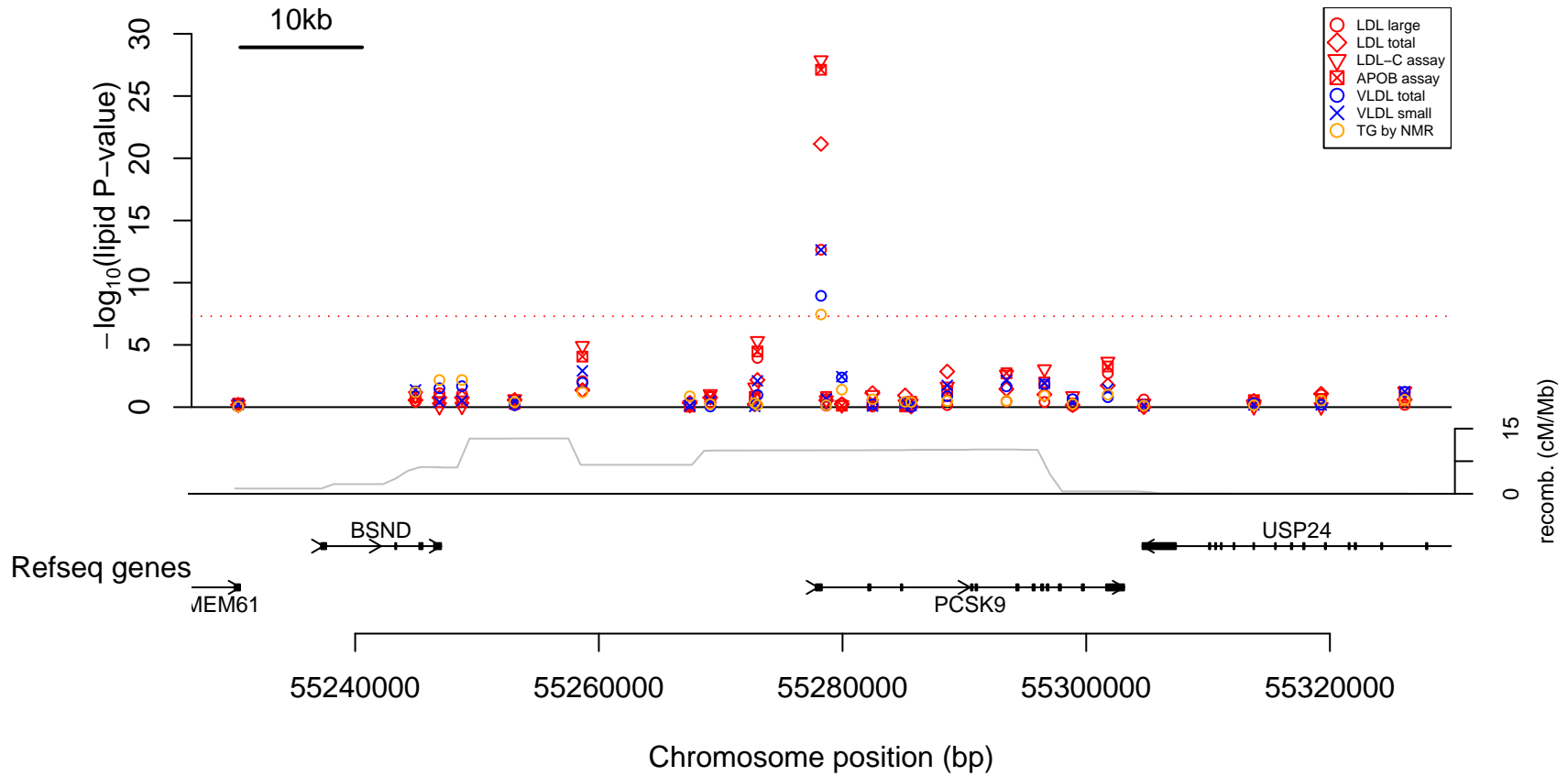
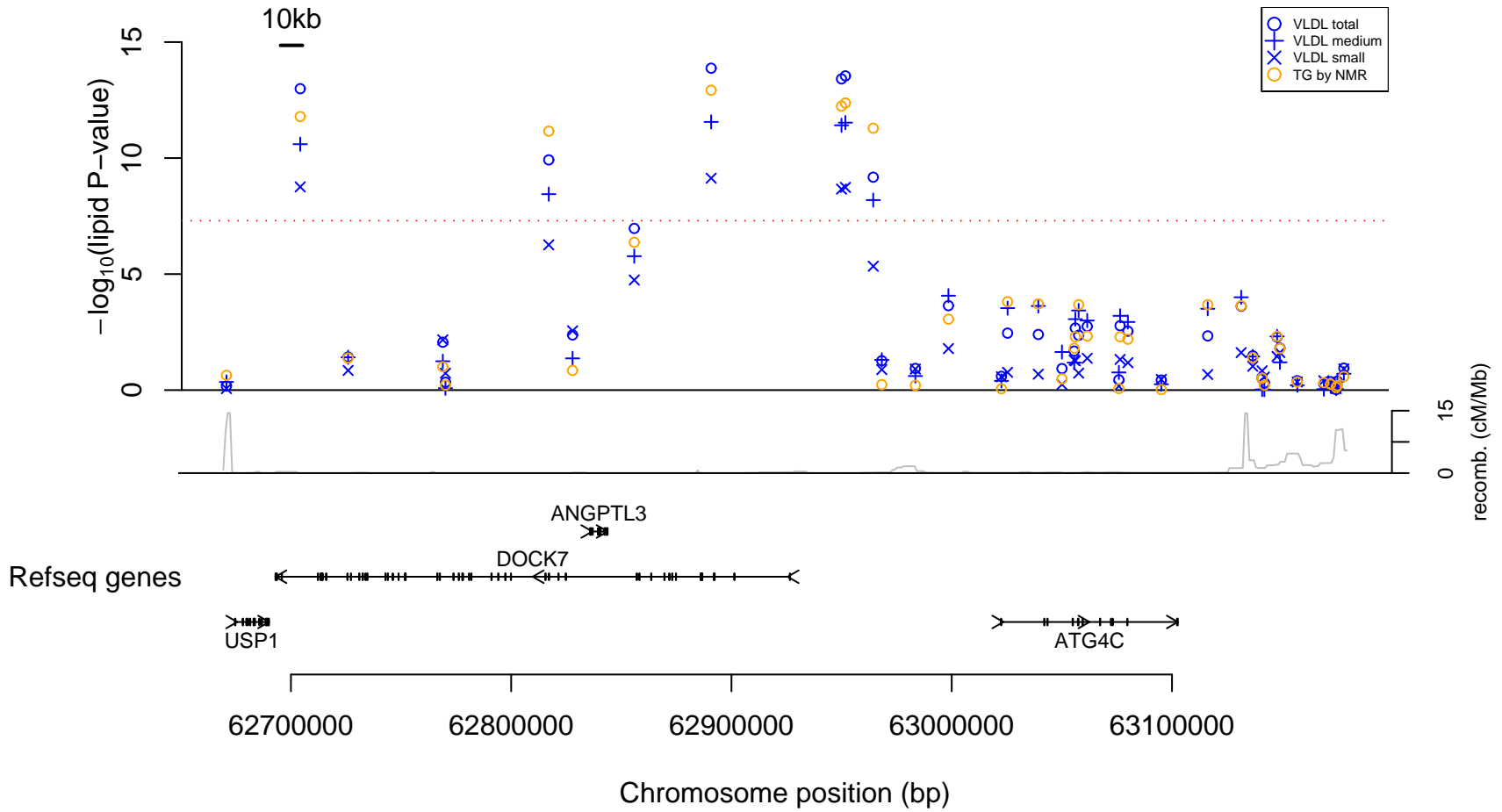


Figure S1. Locus p-values for lipoprotein fractions with at least one SNP reaching genomewide significance at each of the candidate loci. All plots correspond to analysis in the whole sample except for locus 8p23.1, for which genomewide association was observed only in the fasting subsample as shown.

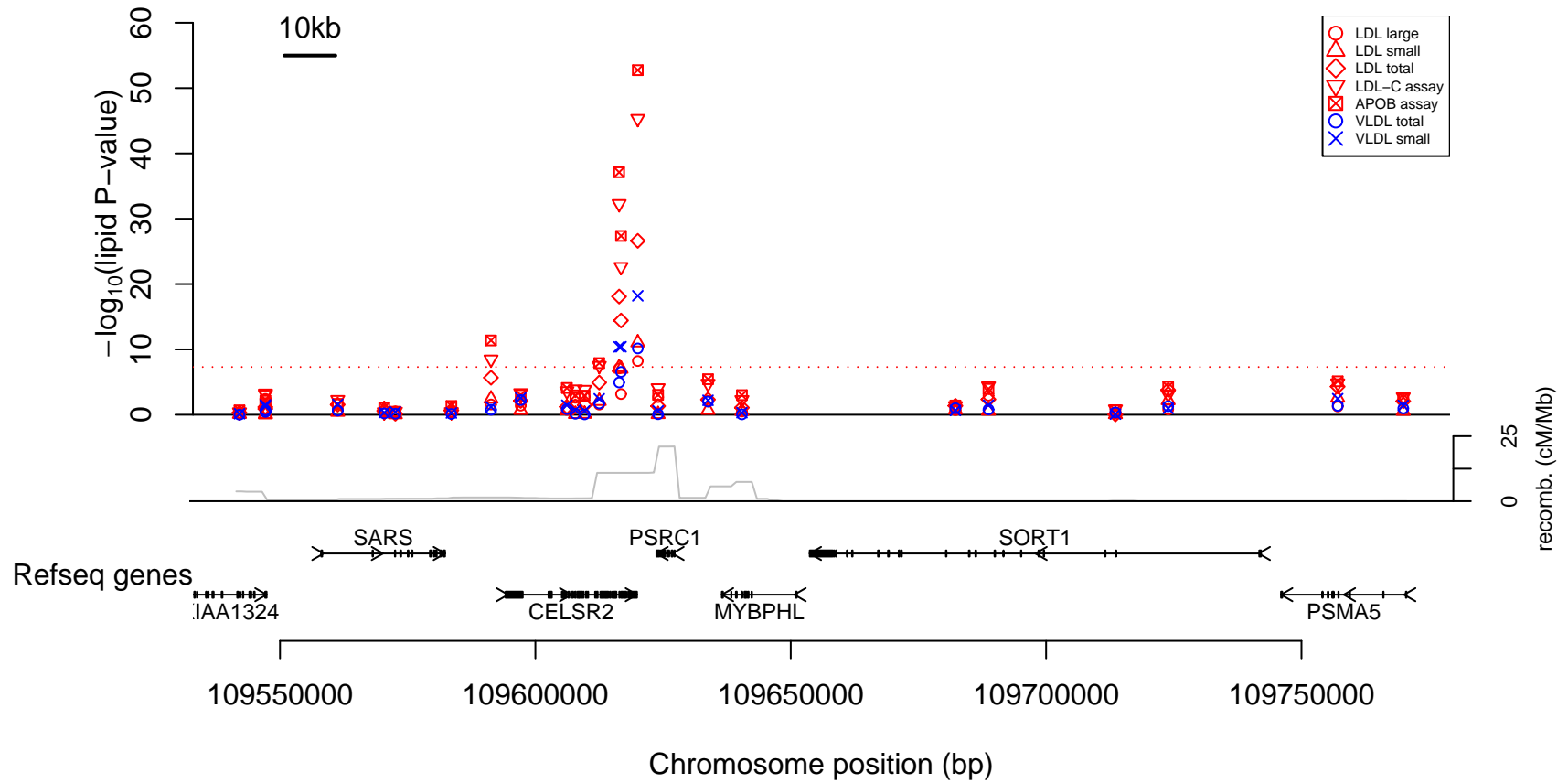
Lipid fraction associations at 1p32.3



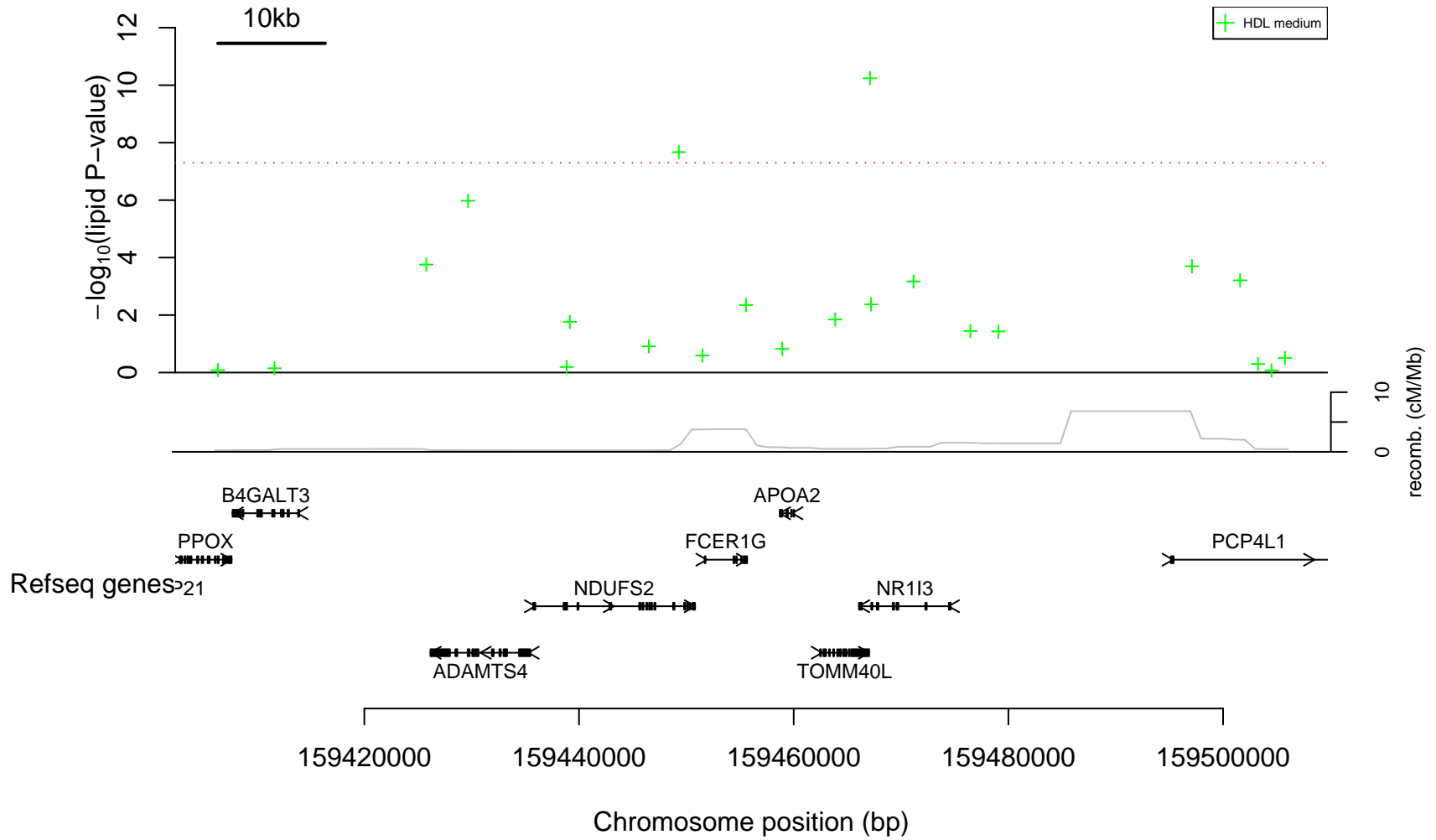
Lipid fraction associations at 1p31.3



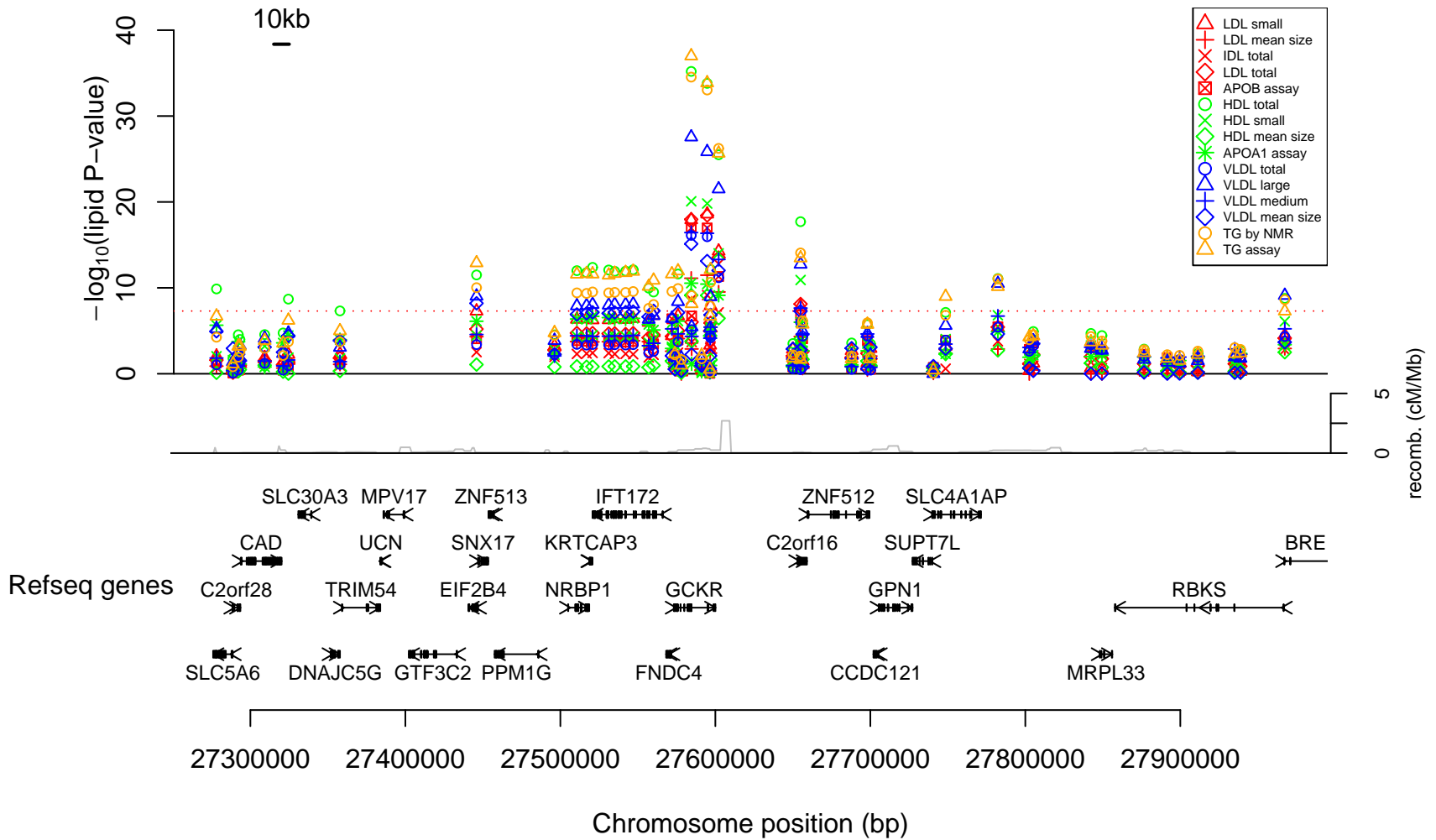
Lipid fraction associations at 1p13.3



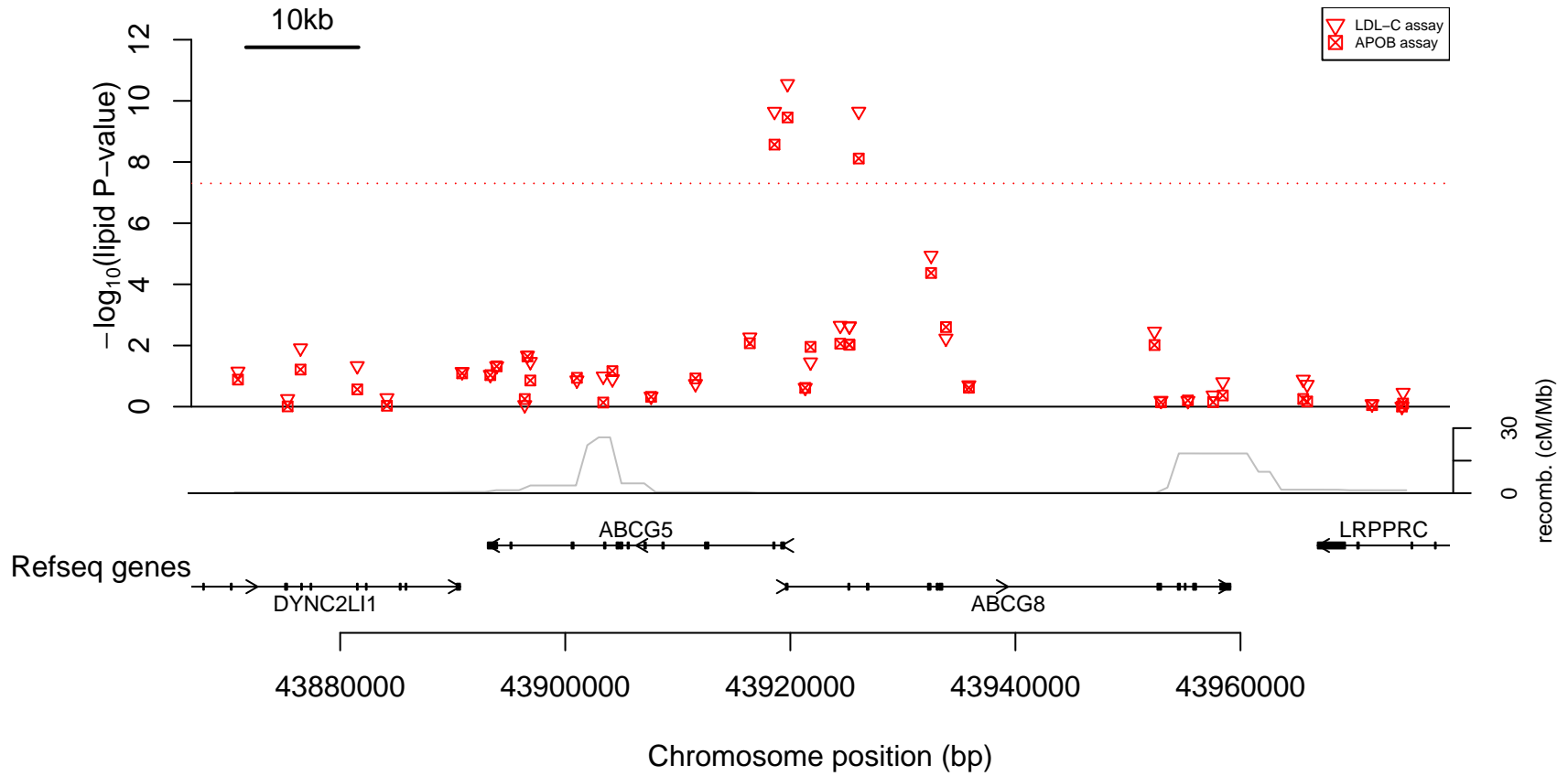
Lipid fraction associations at 1q23.3



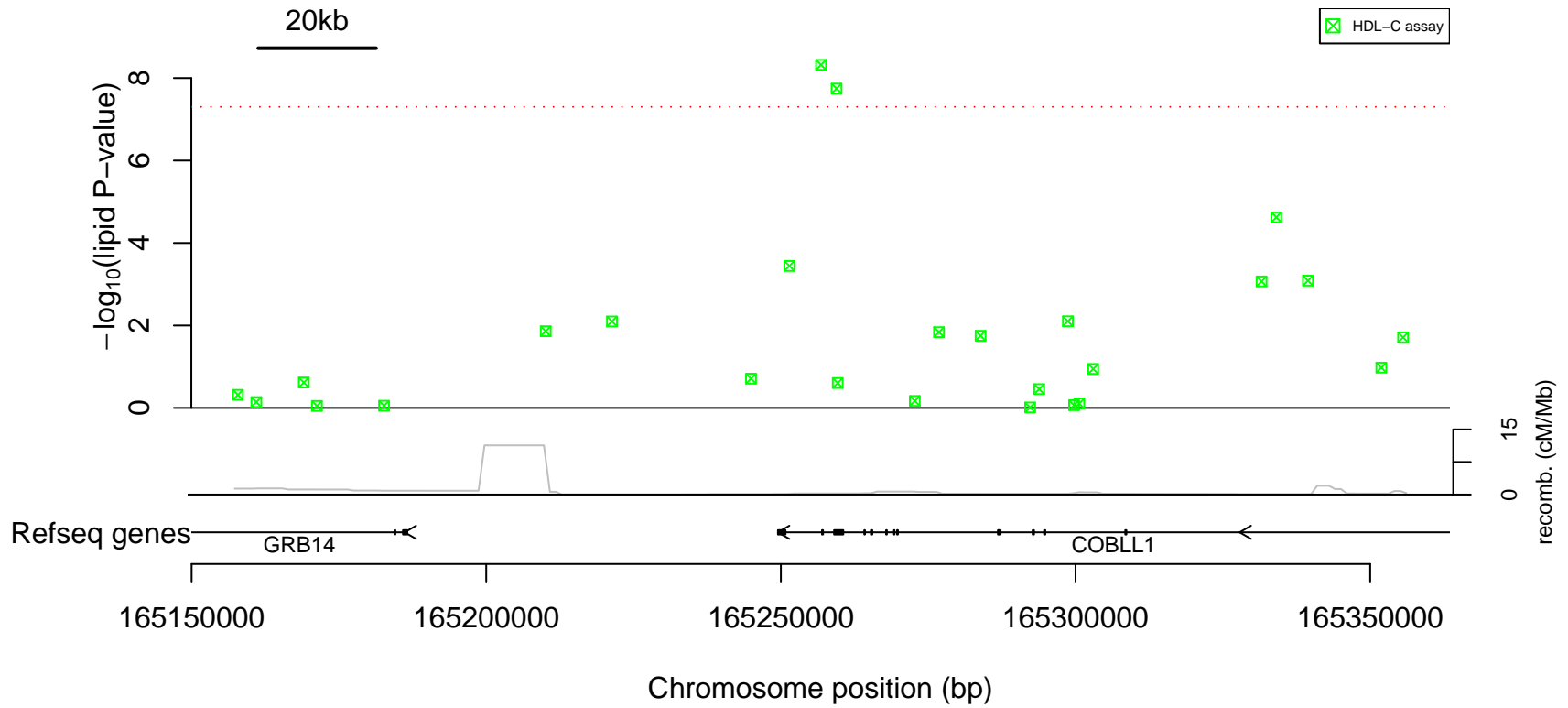
Lipid fraction associations at 2p23.3



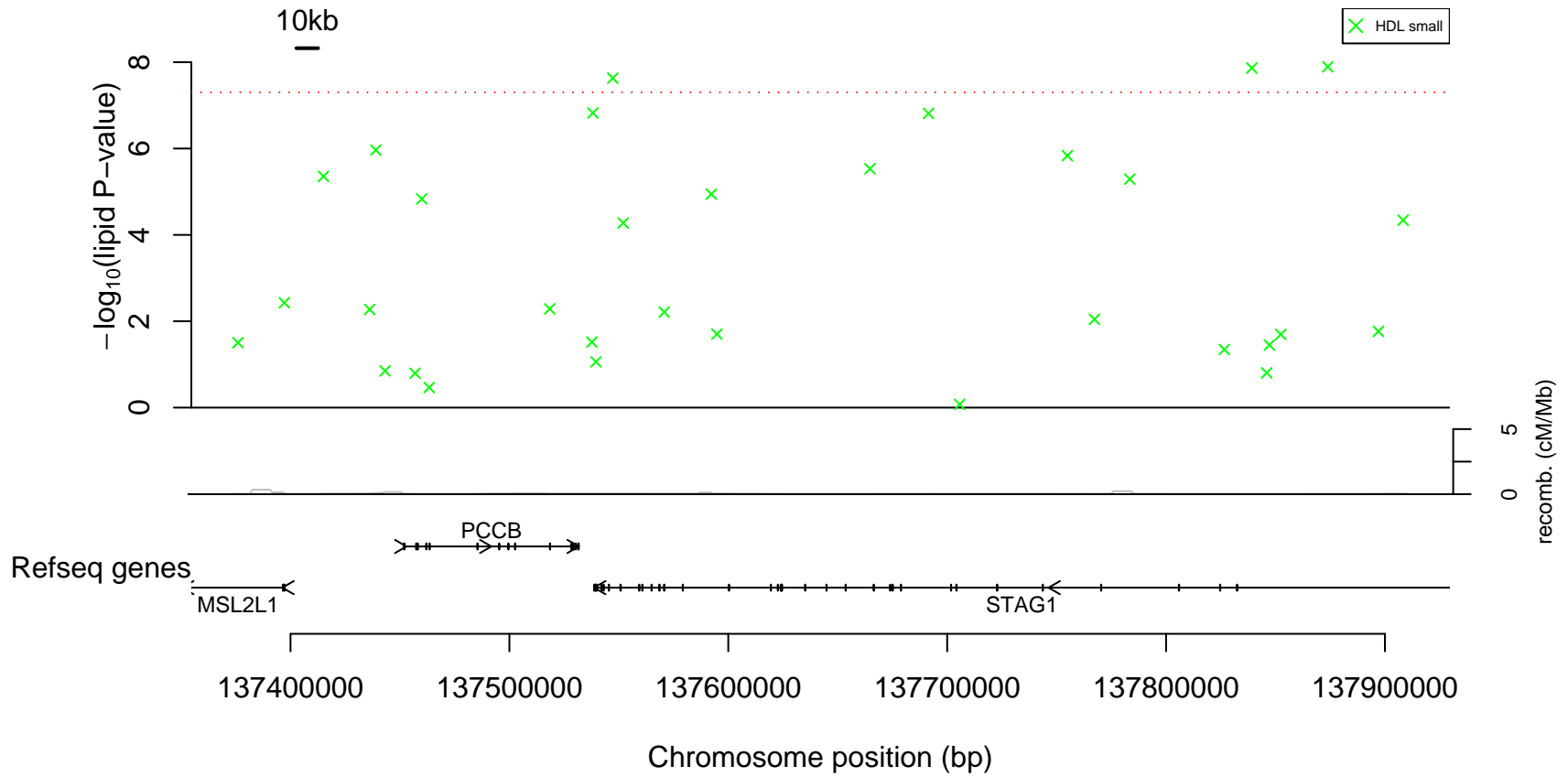
Lipid fraction associations at 2p21



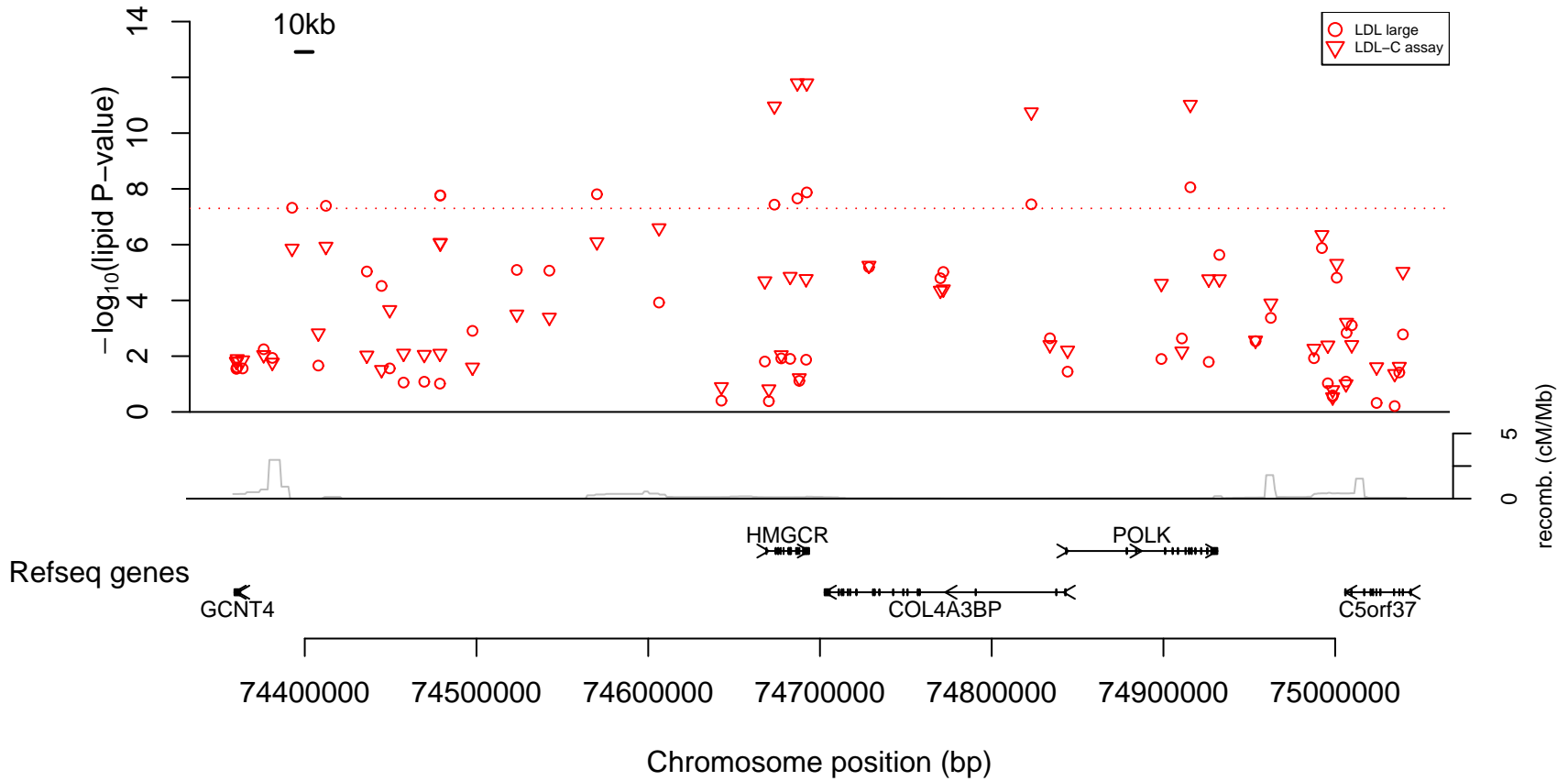
Lipid fraction associations at 2q24.3



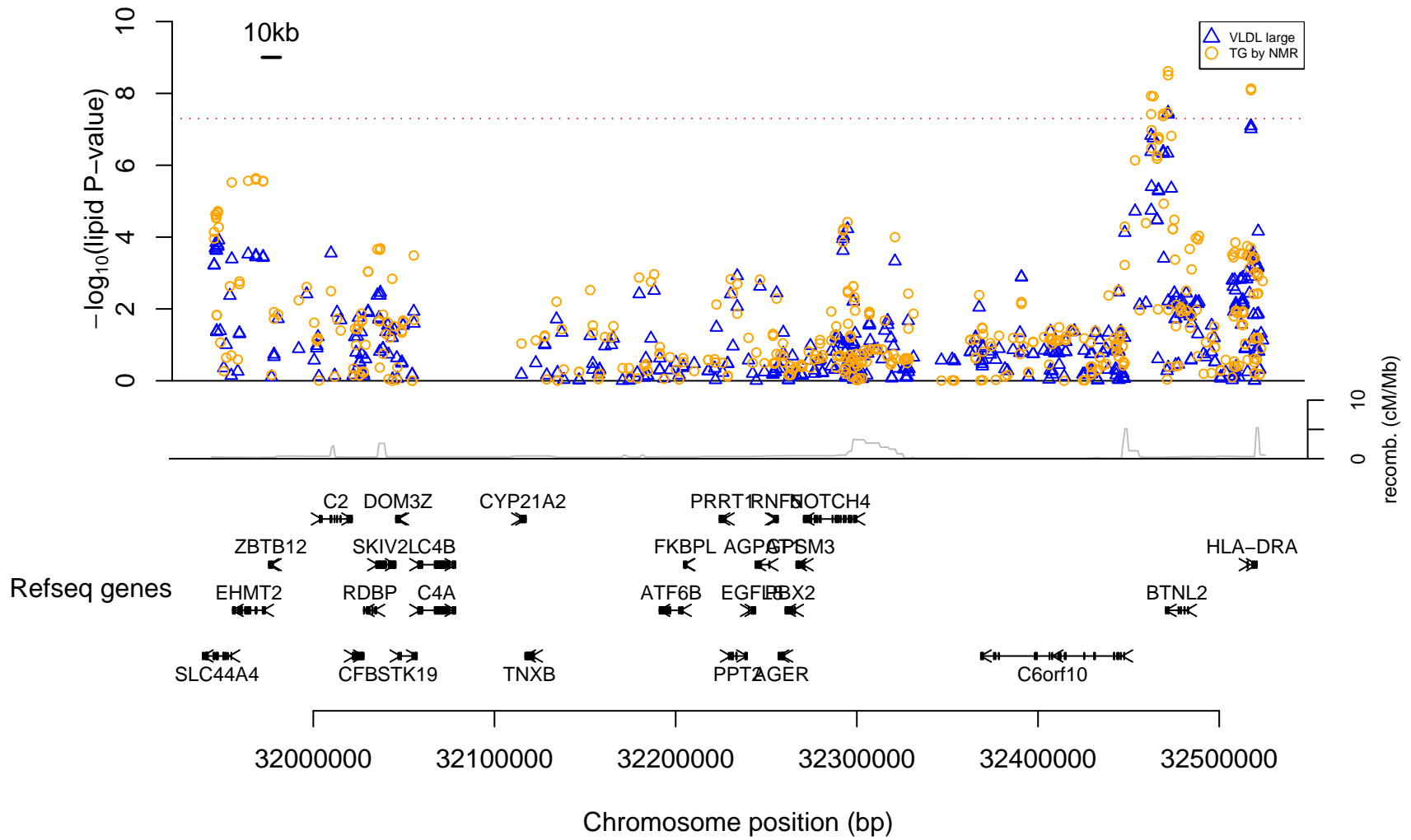
Lipid fraction associations at 3q22.3



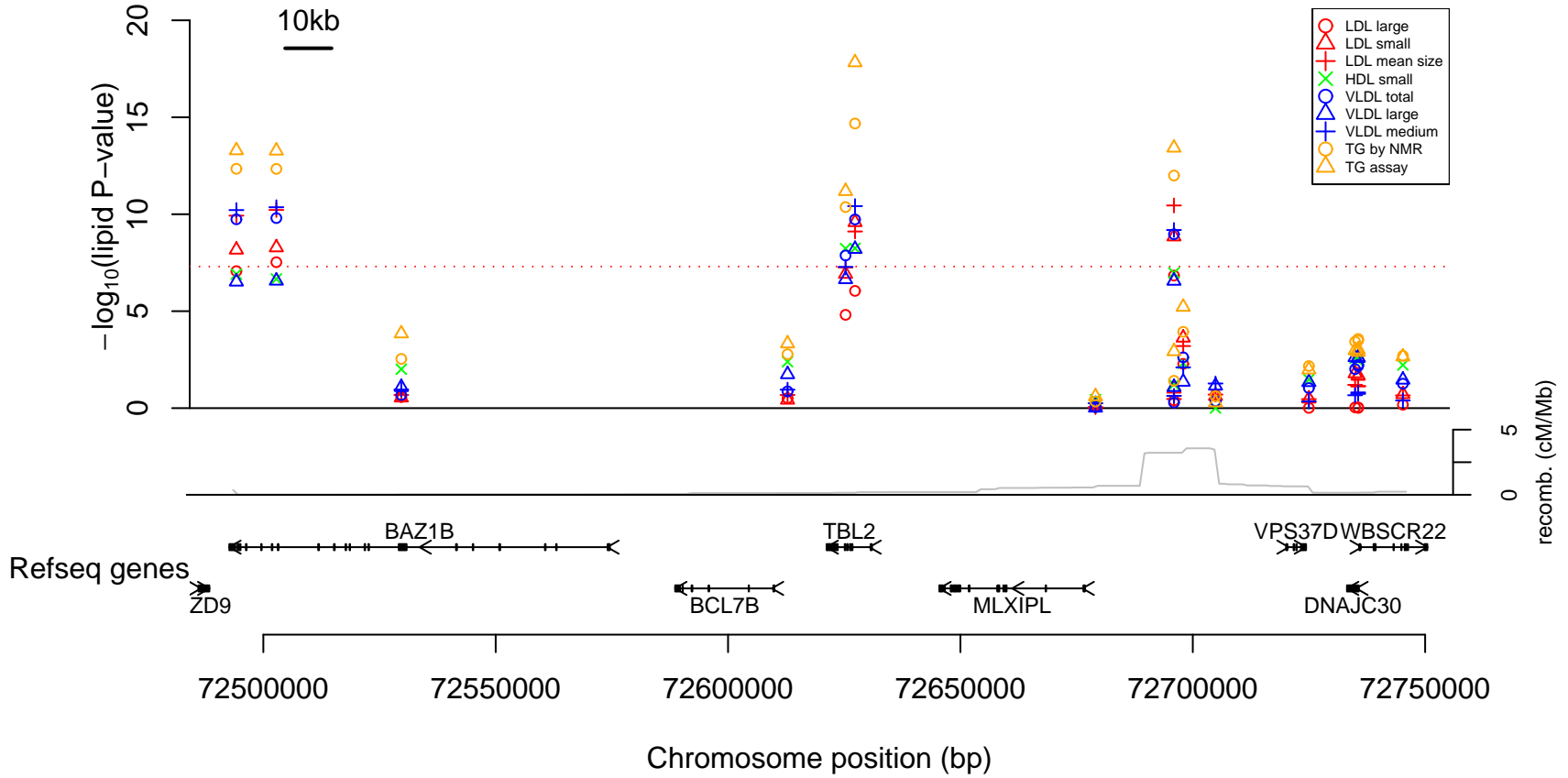
Lipid fraction associations at 5q13.3



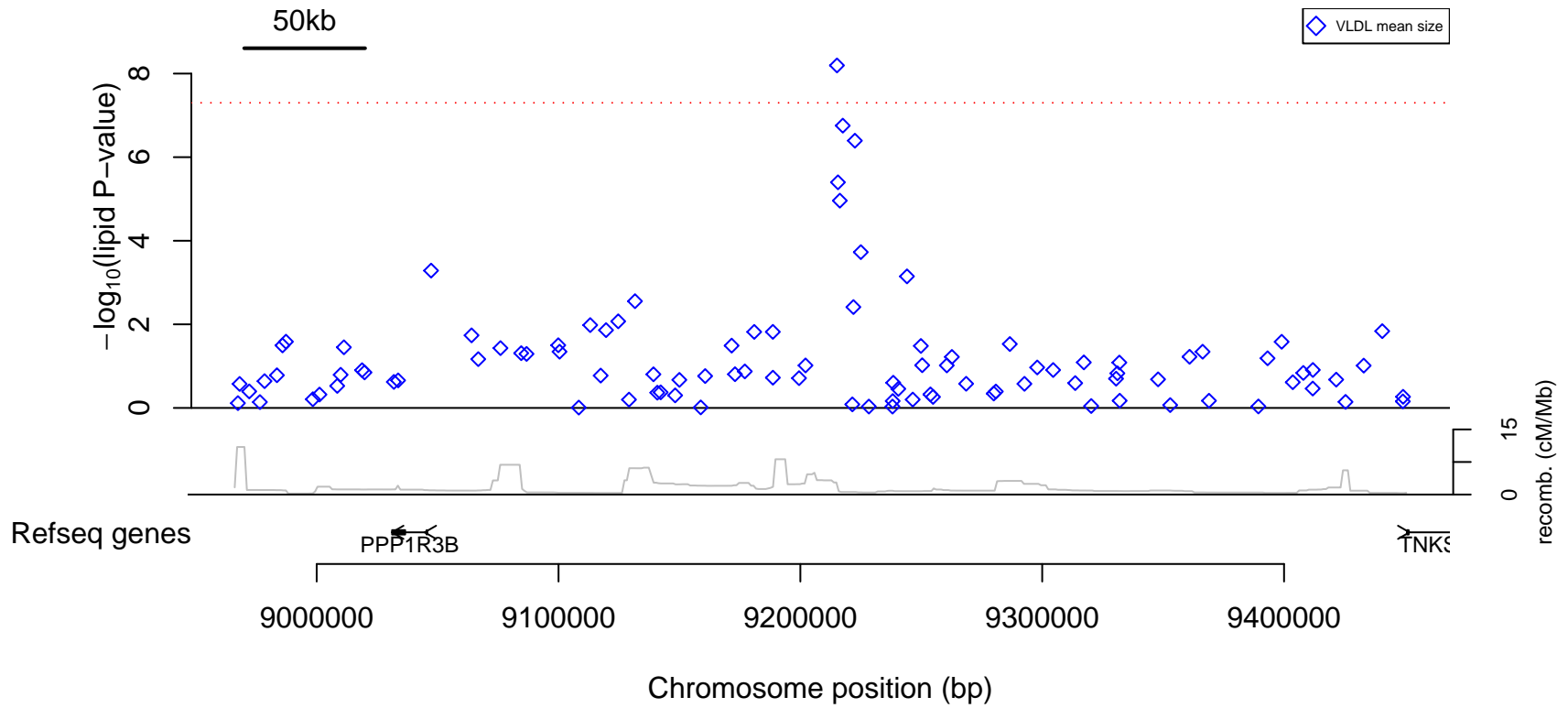
Lipid fraction associations at 6p21.32



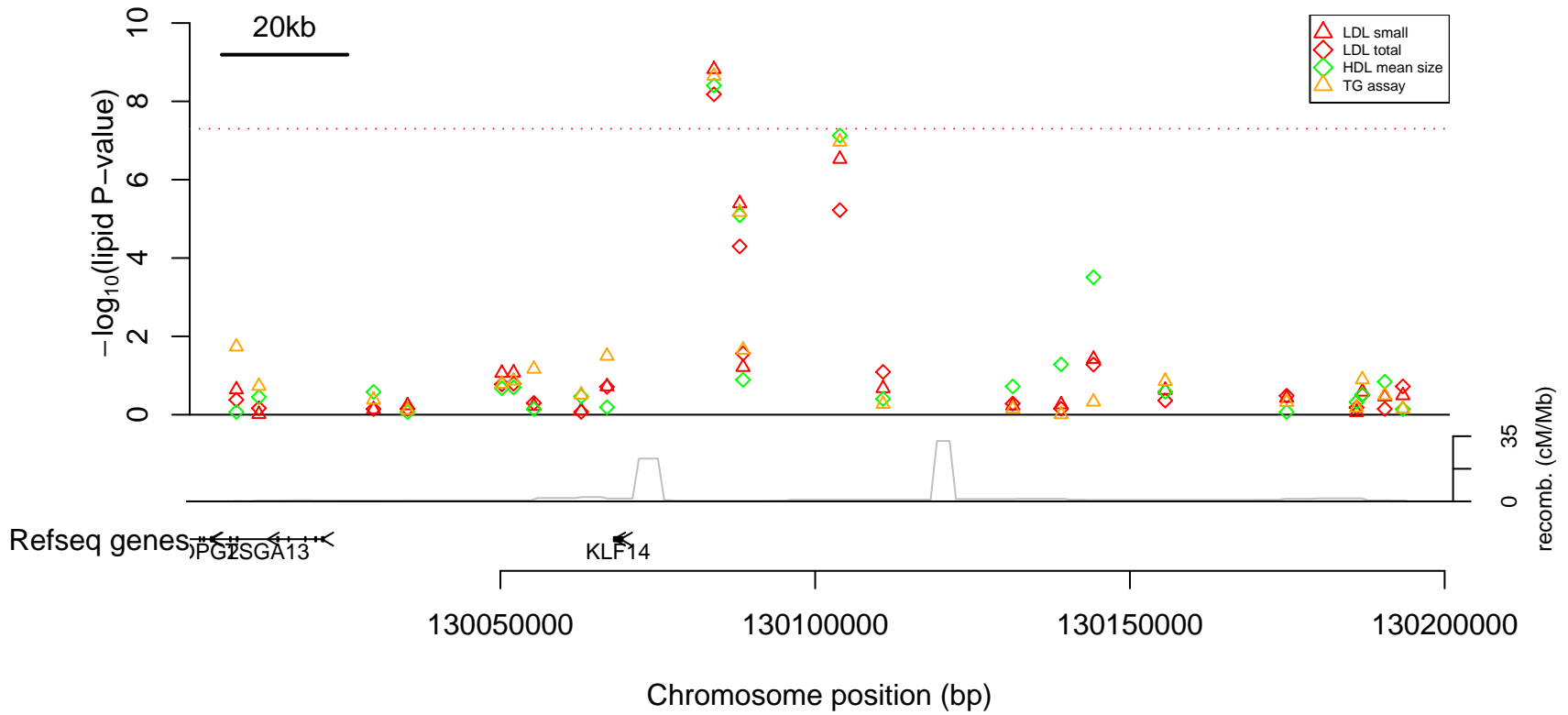
Lipid fraction associations at 7q11.23



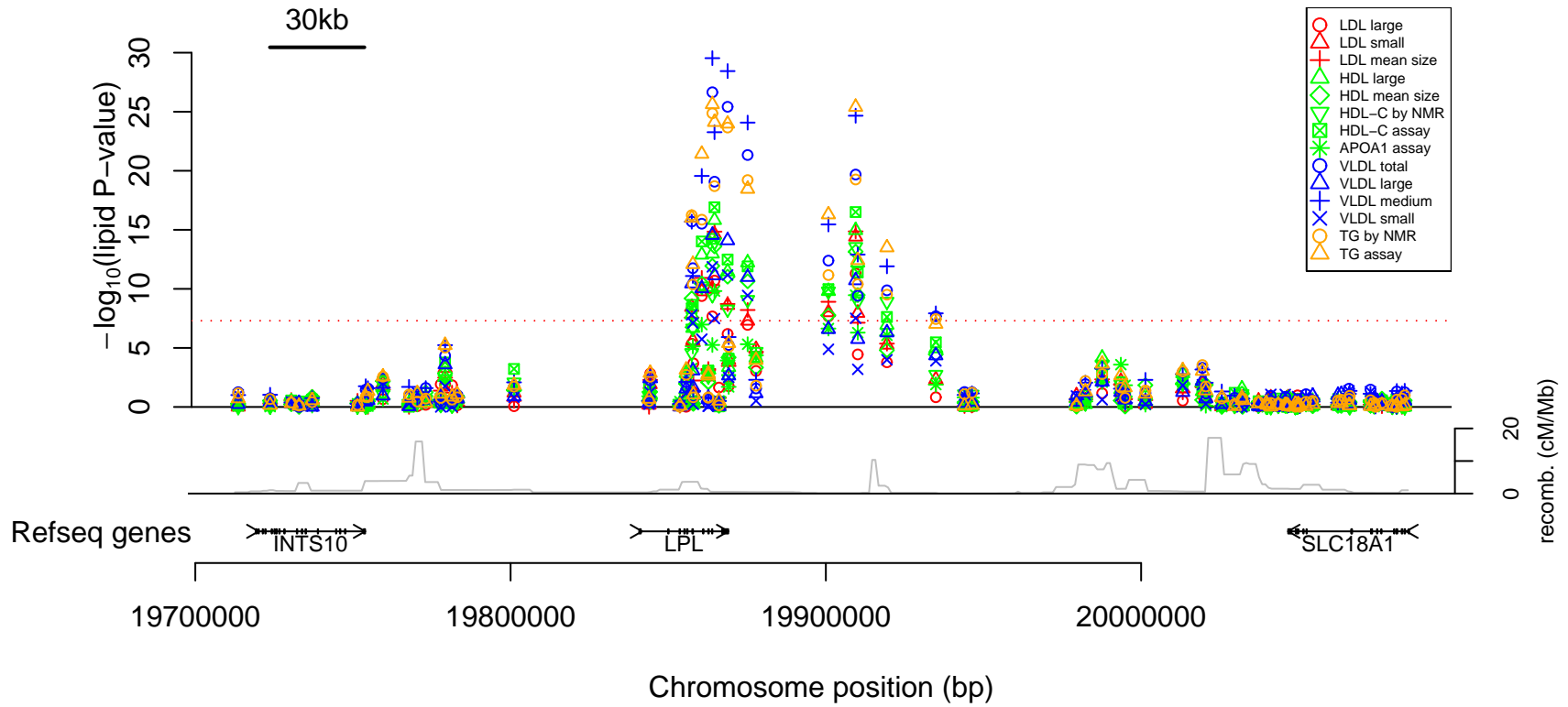
Lipid fraction associations at 8p23.1



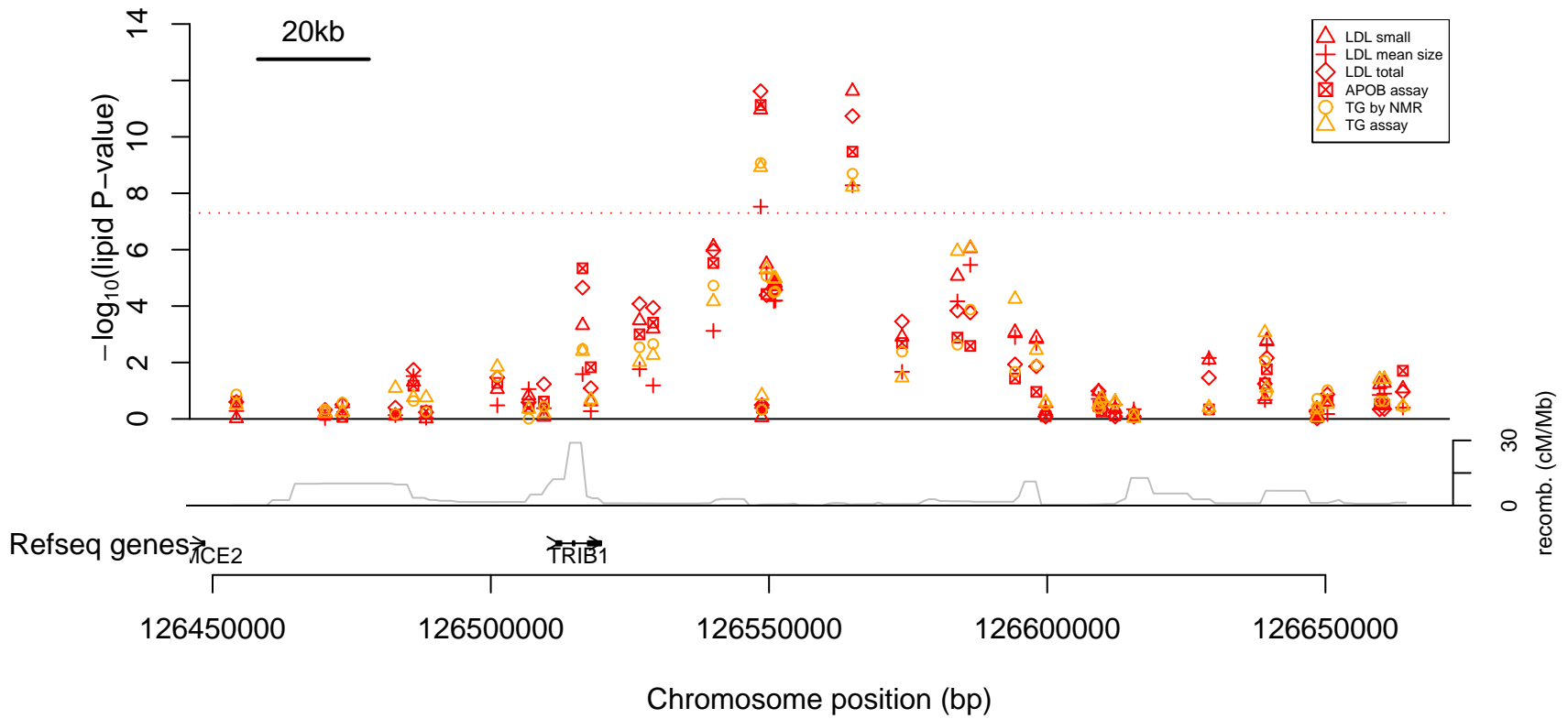
Lipid fraction associations at 7q32.2



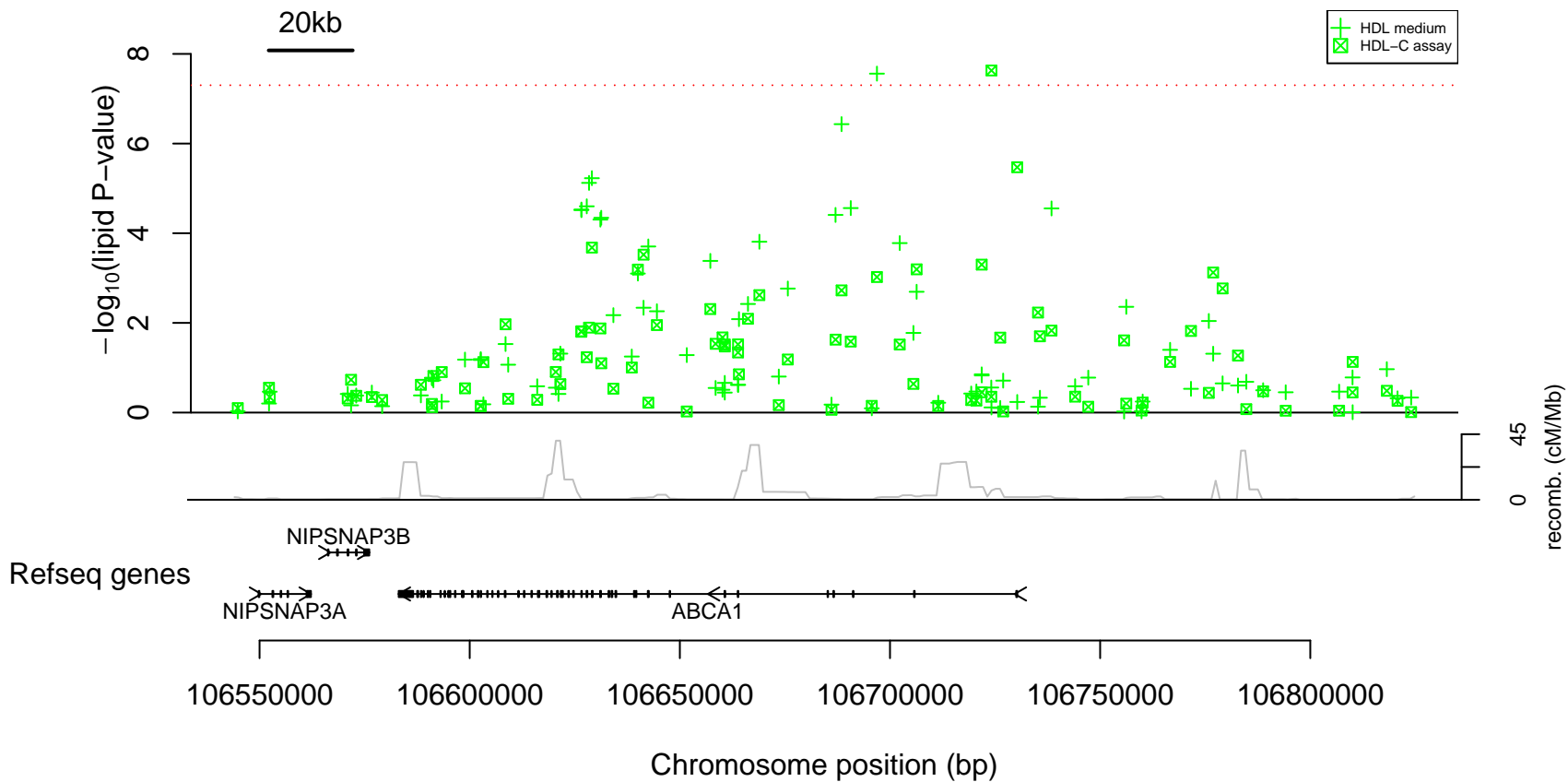
Lipid fraction associations at 8p21.3



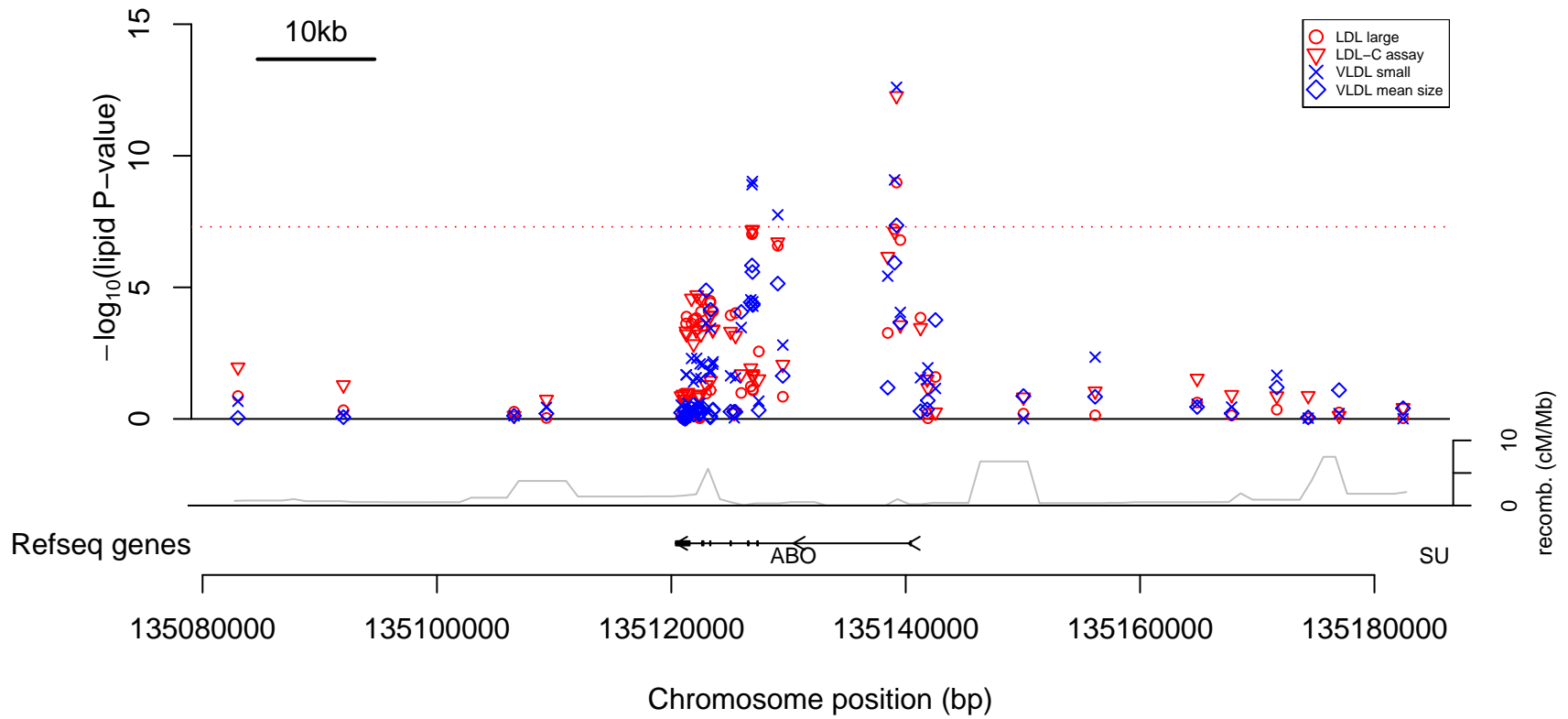
Lipid fraction associations at 8q24.13



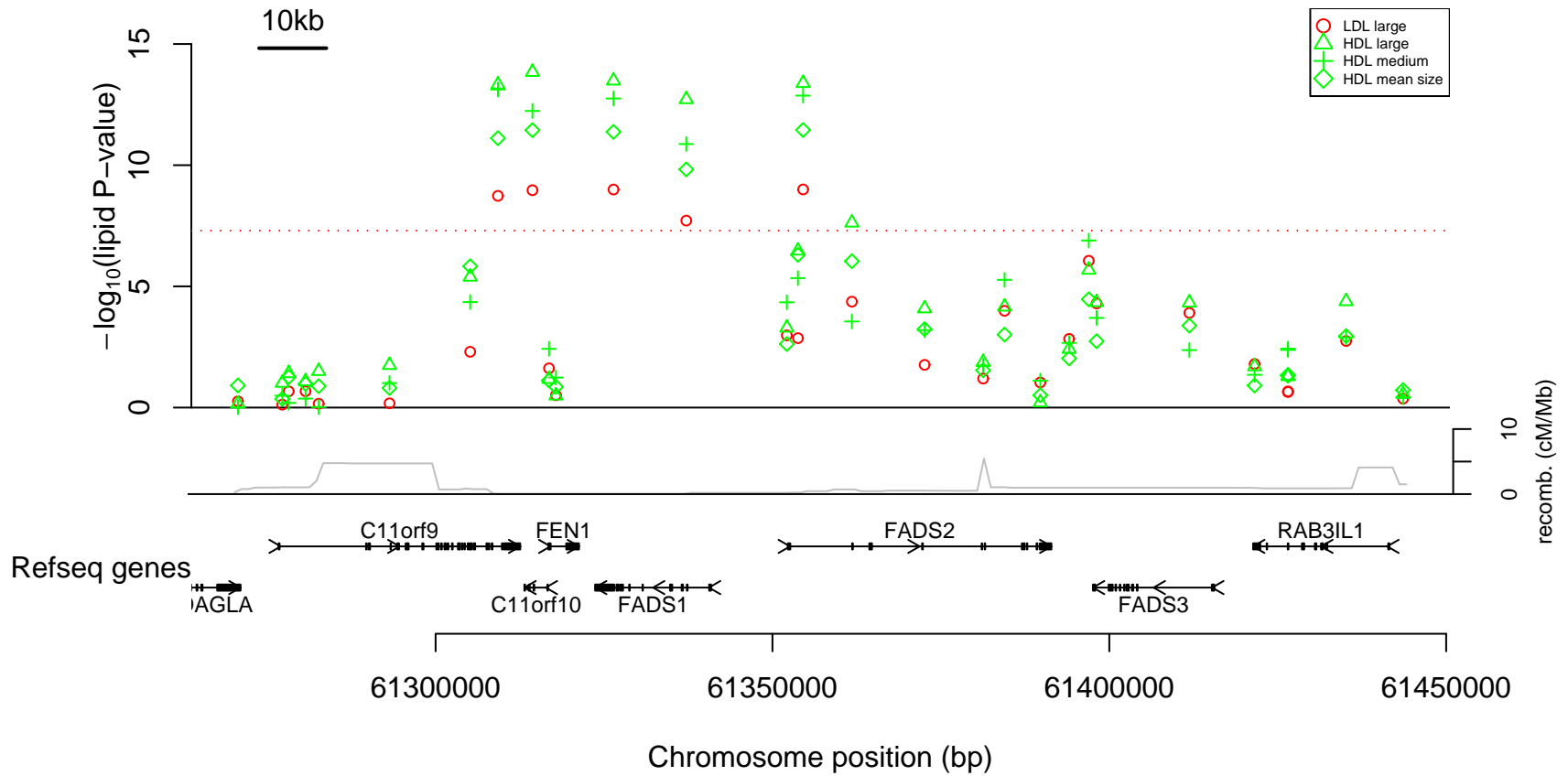
Lipid fraction associations at 9q31.1



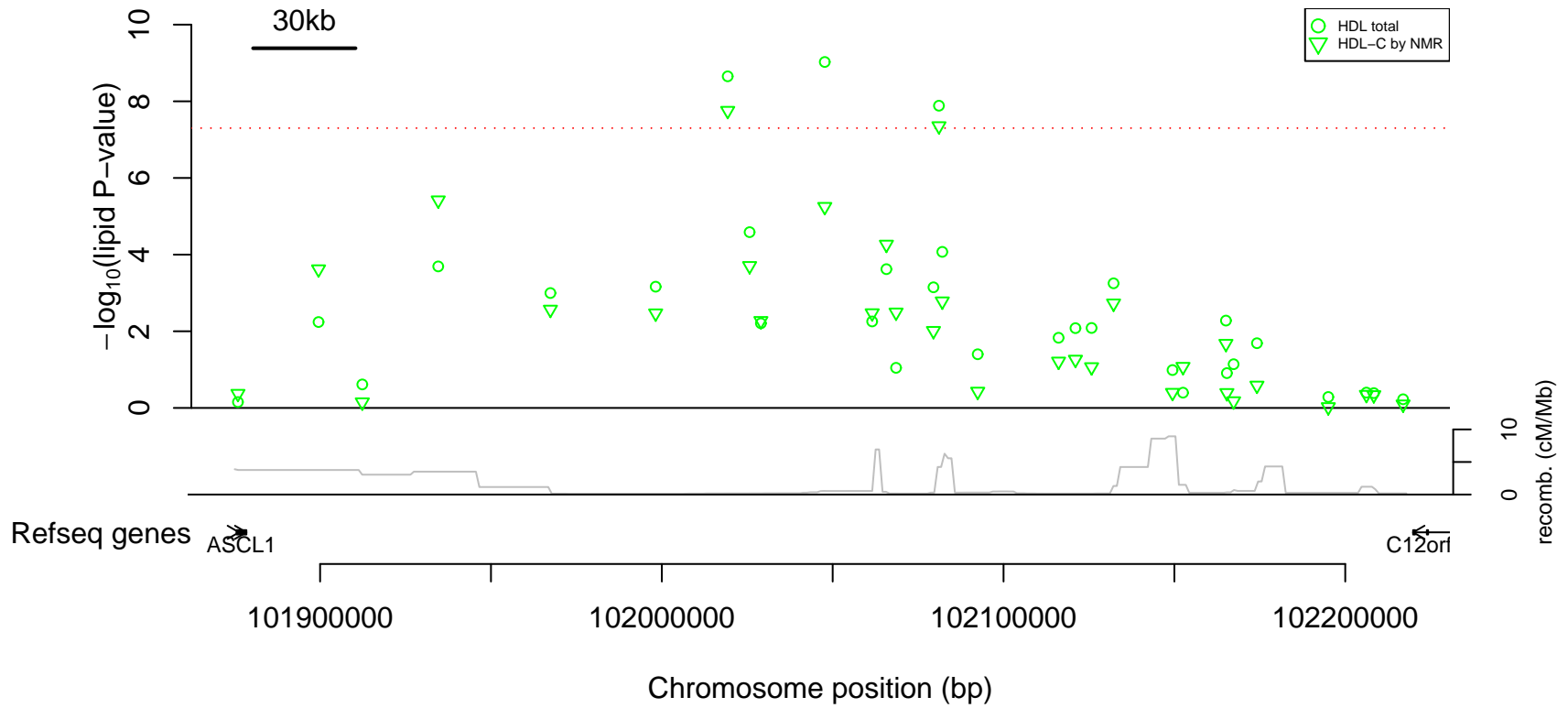
Lipid fraction associations at 9q34.2



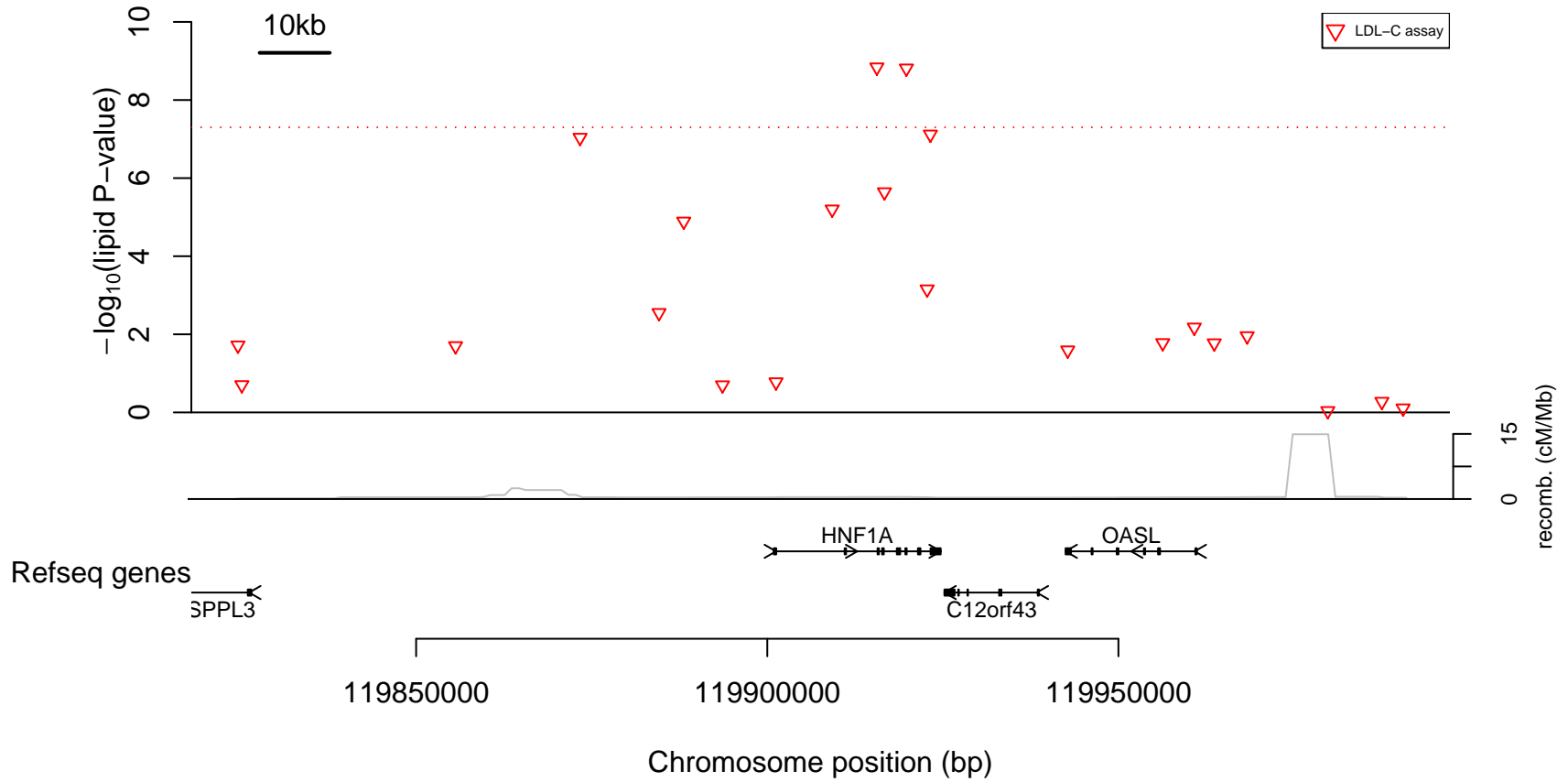
Lipid fraction associations at 11q12.2



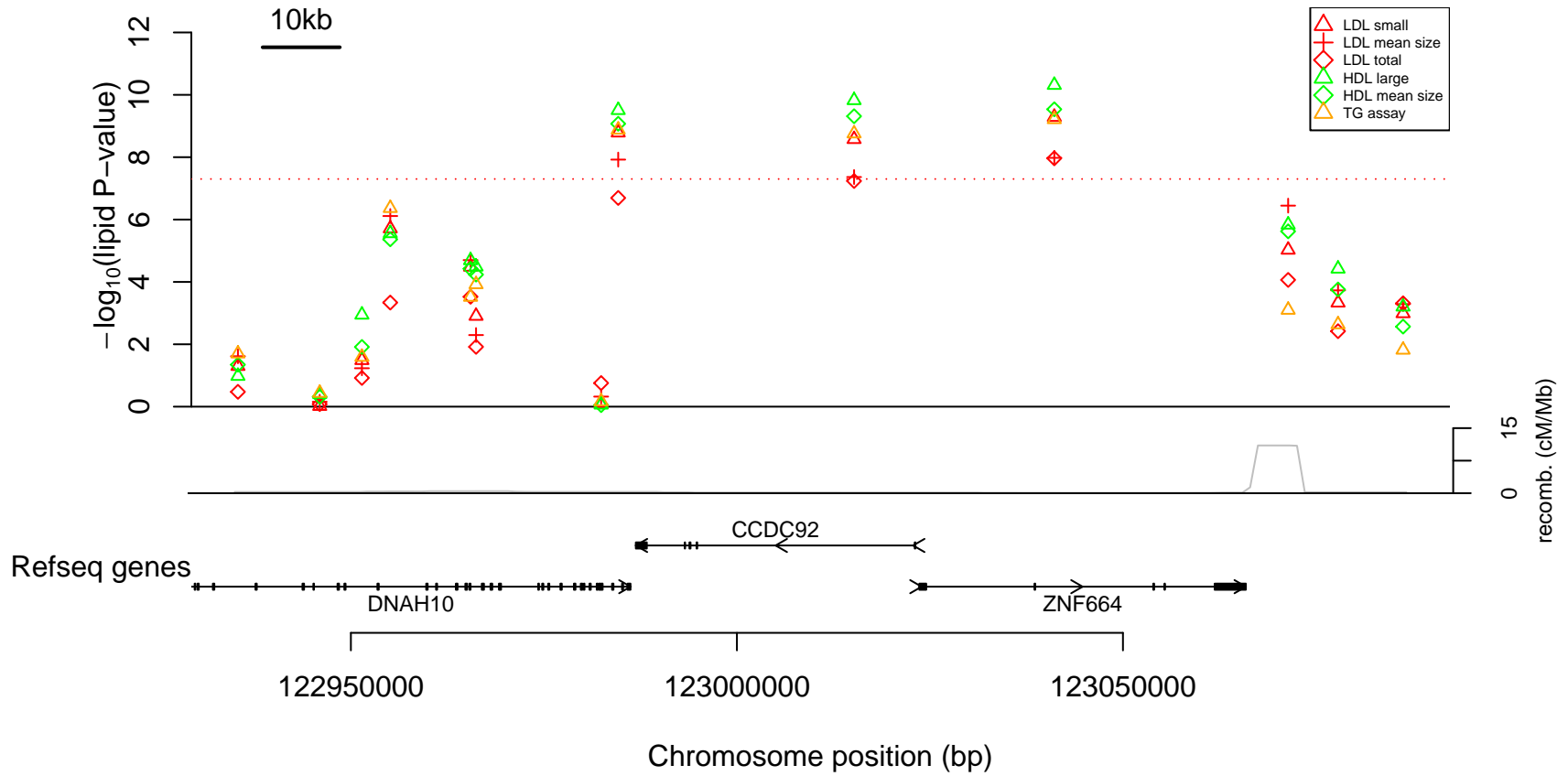
Lipid fraction associations at 12q23.2



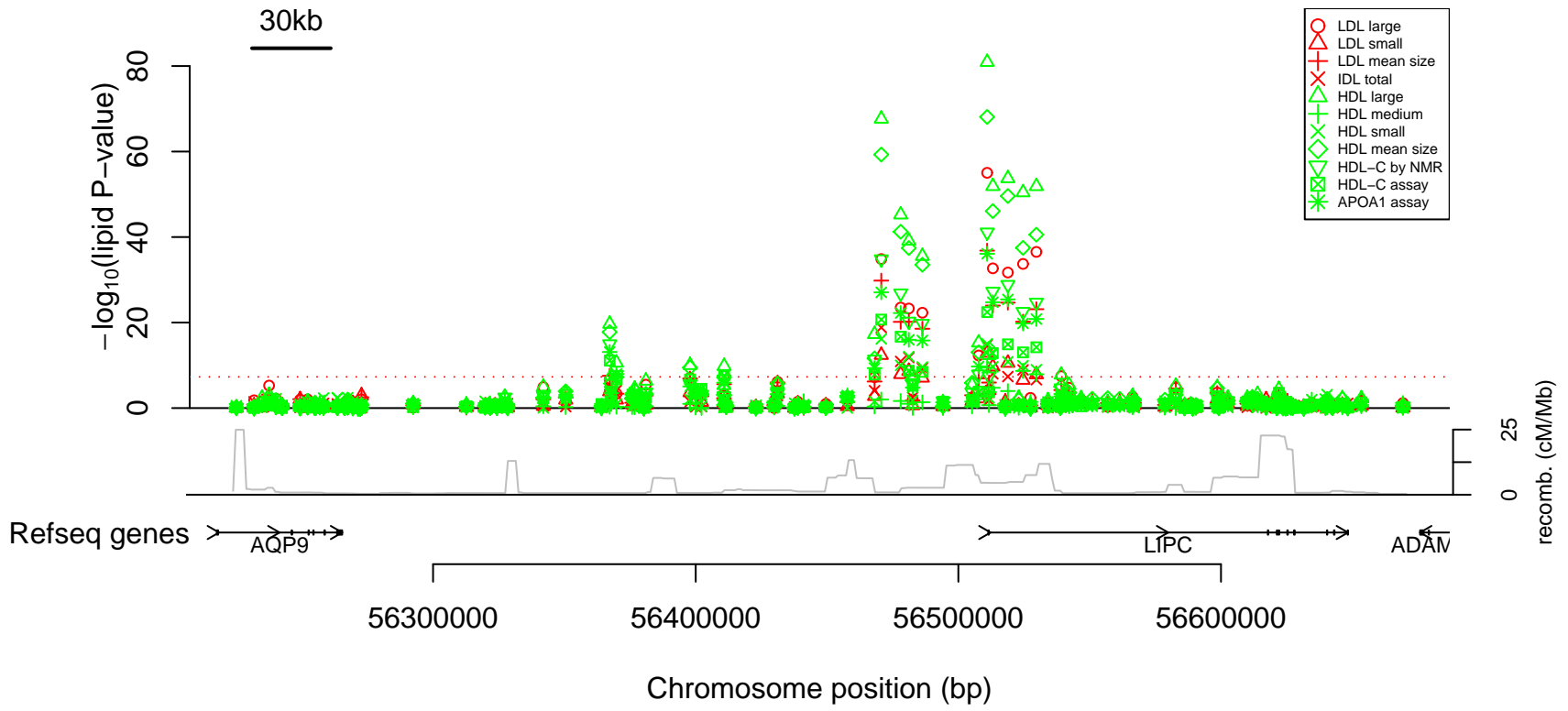
Lipid fraction associations at 12q24.31.A



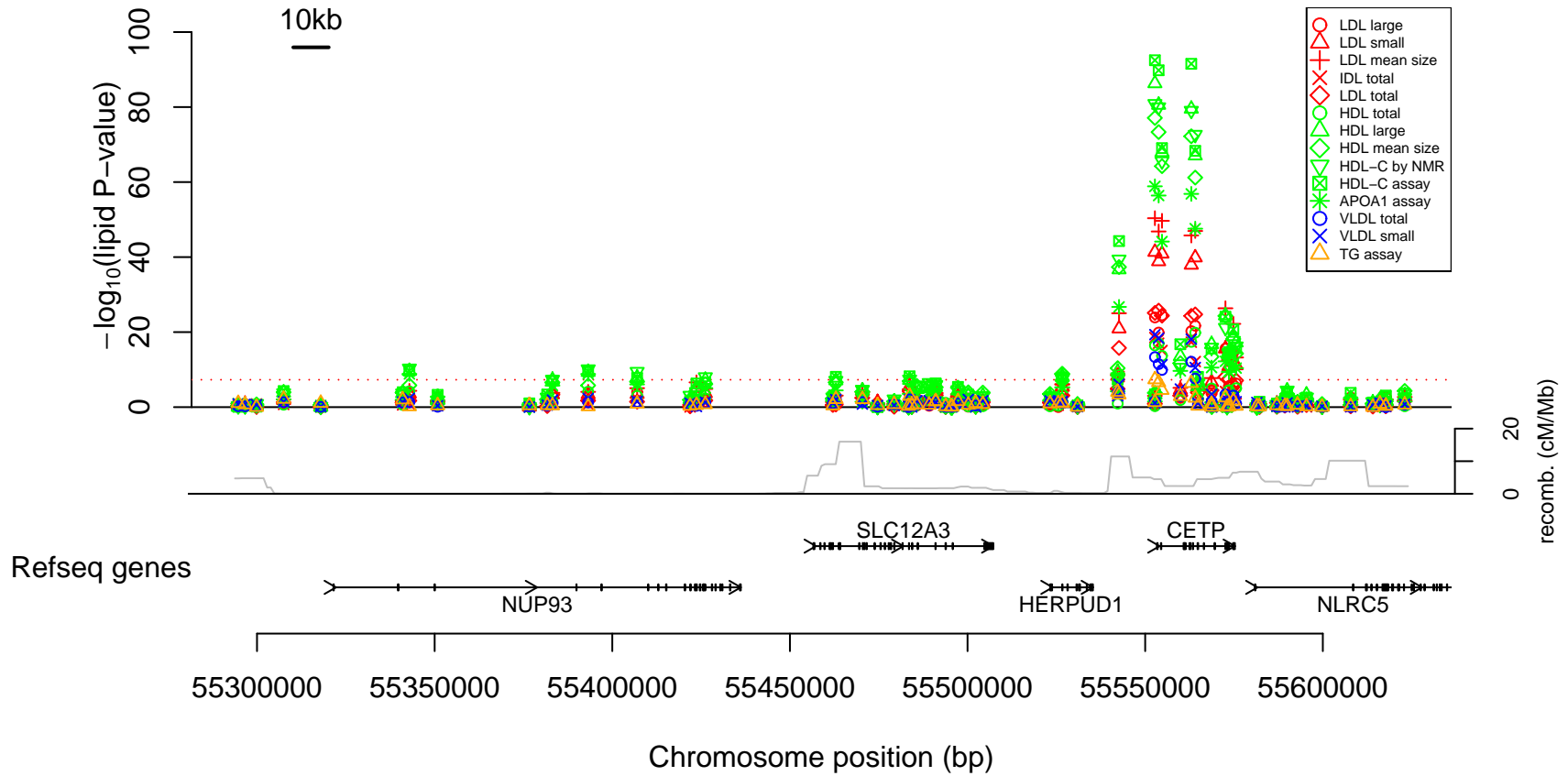
Lipid fraction associations at 12q24.31.B



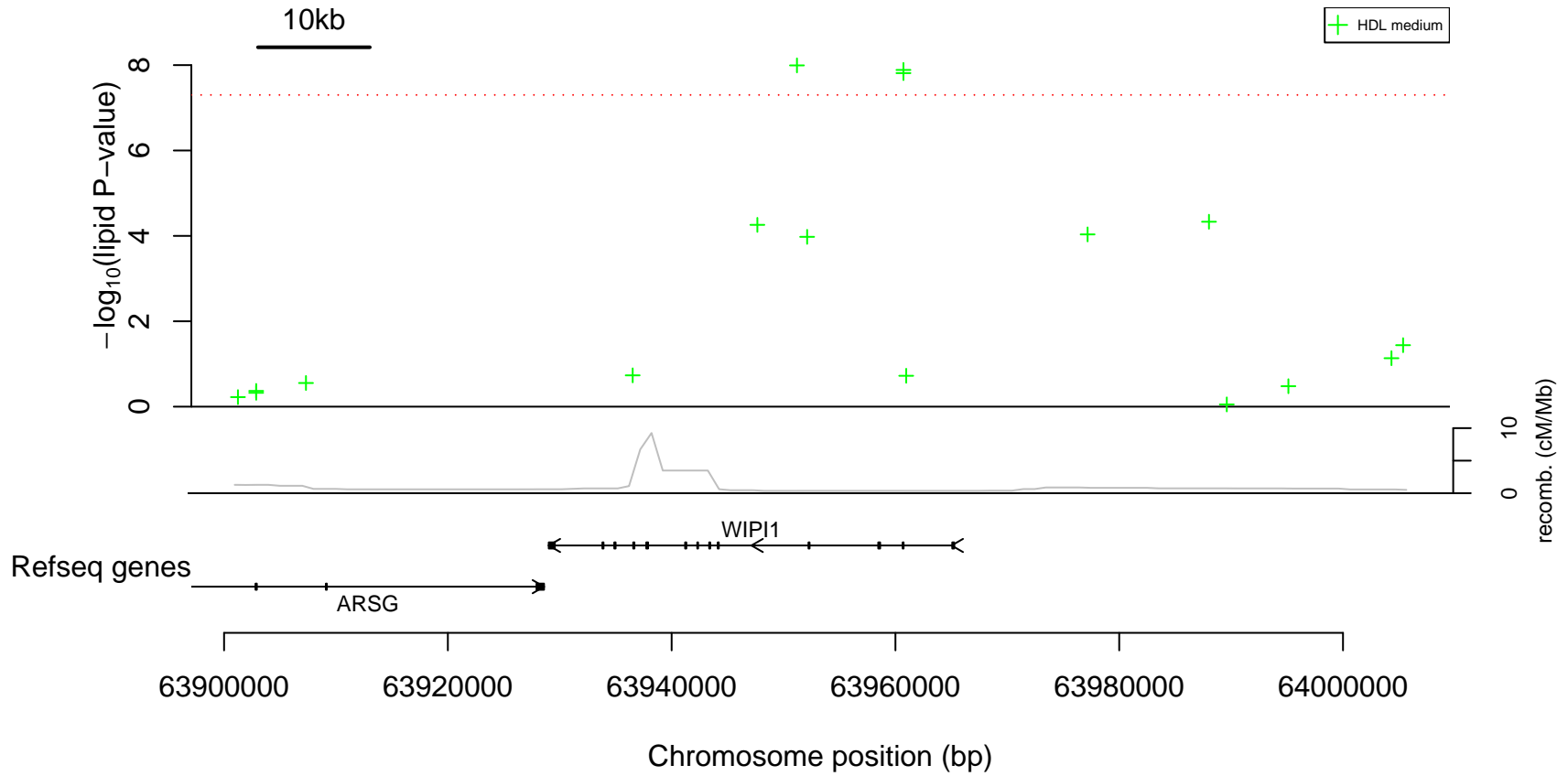
Lipid fraction associations at 15q22.1



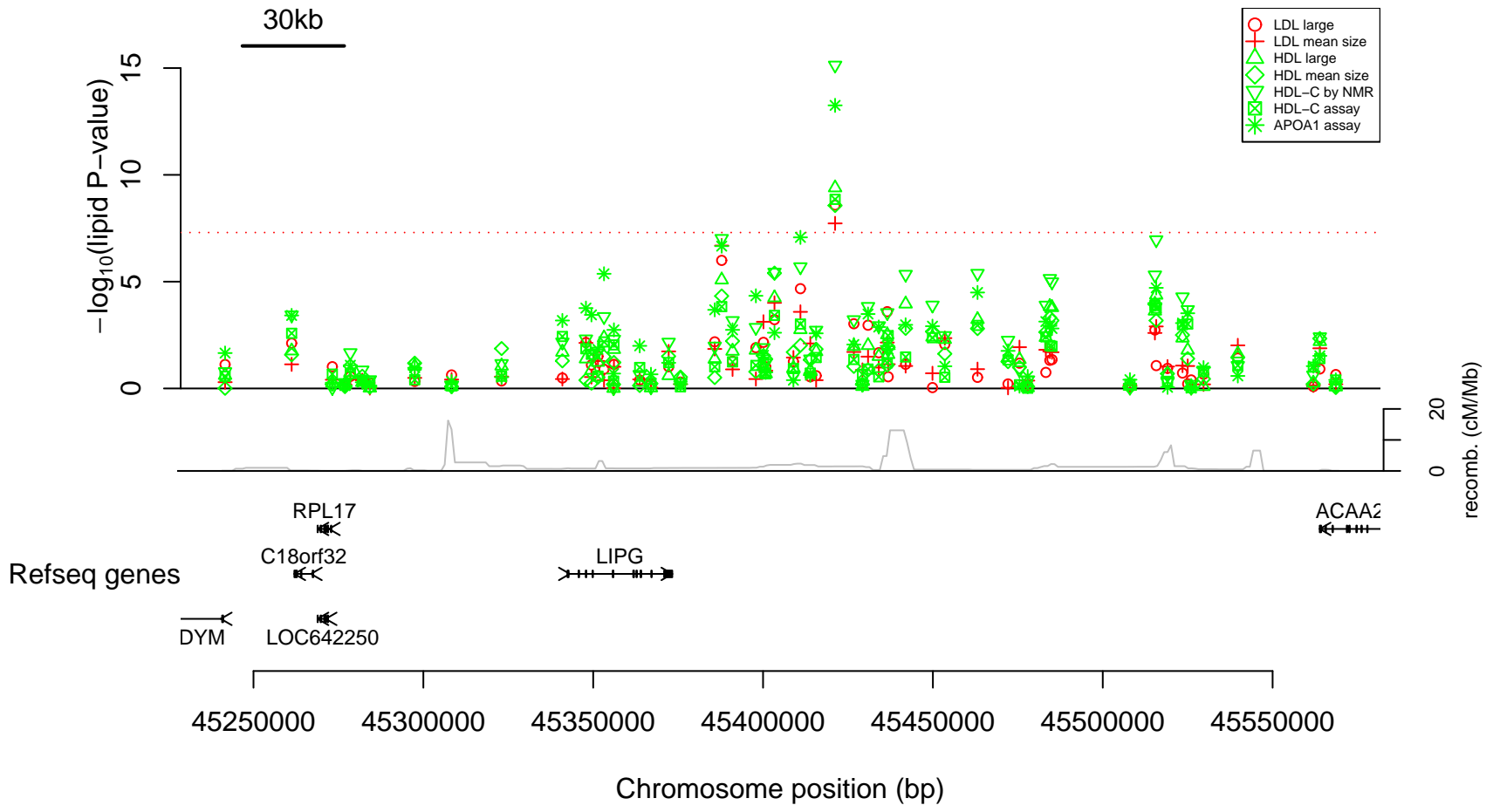
Lipid fraction associations at 16q13



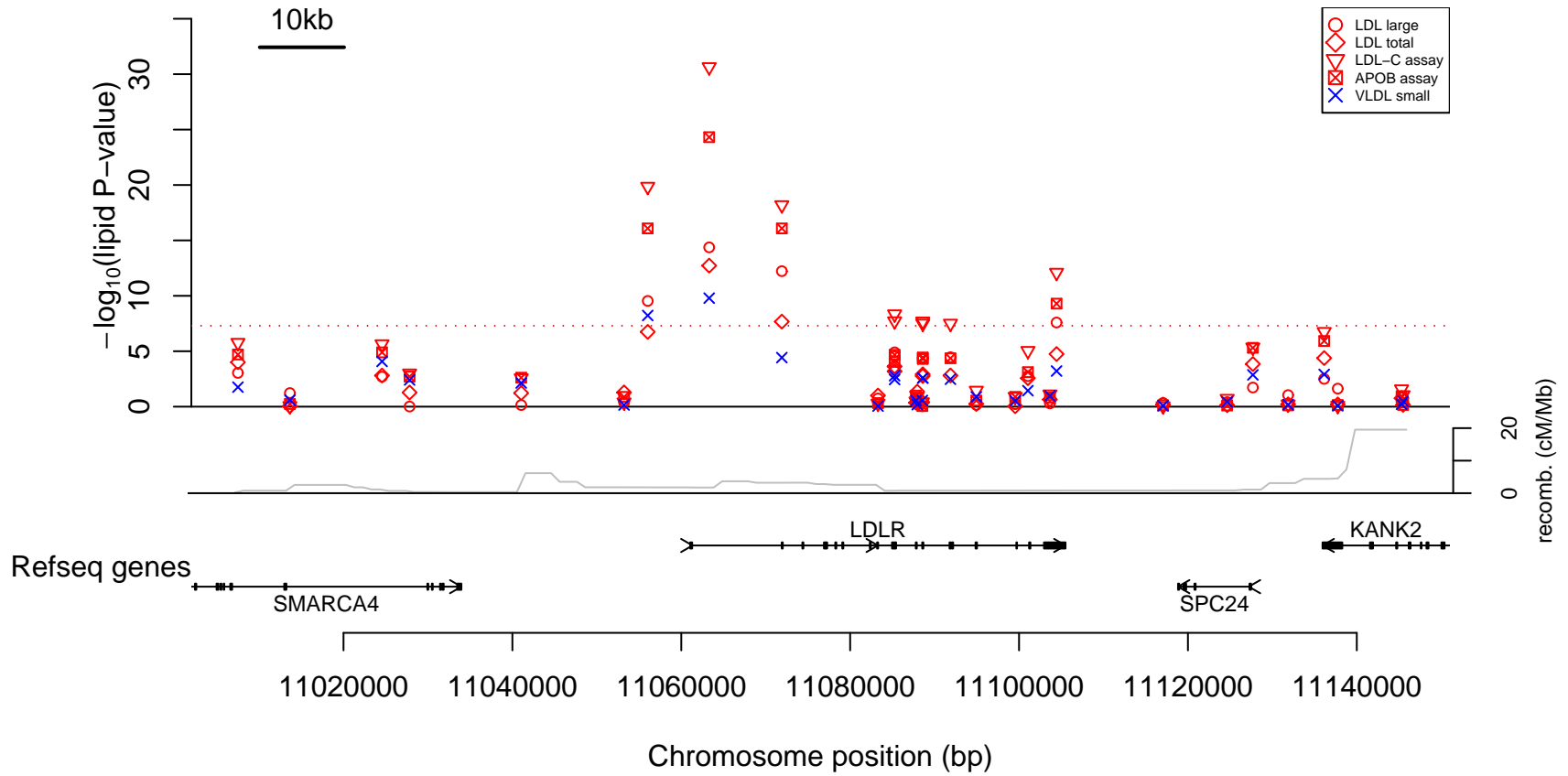
Lipid fraction associations at 17q24.2.B



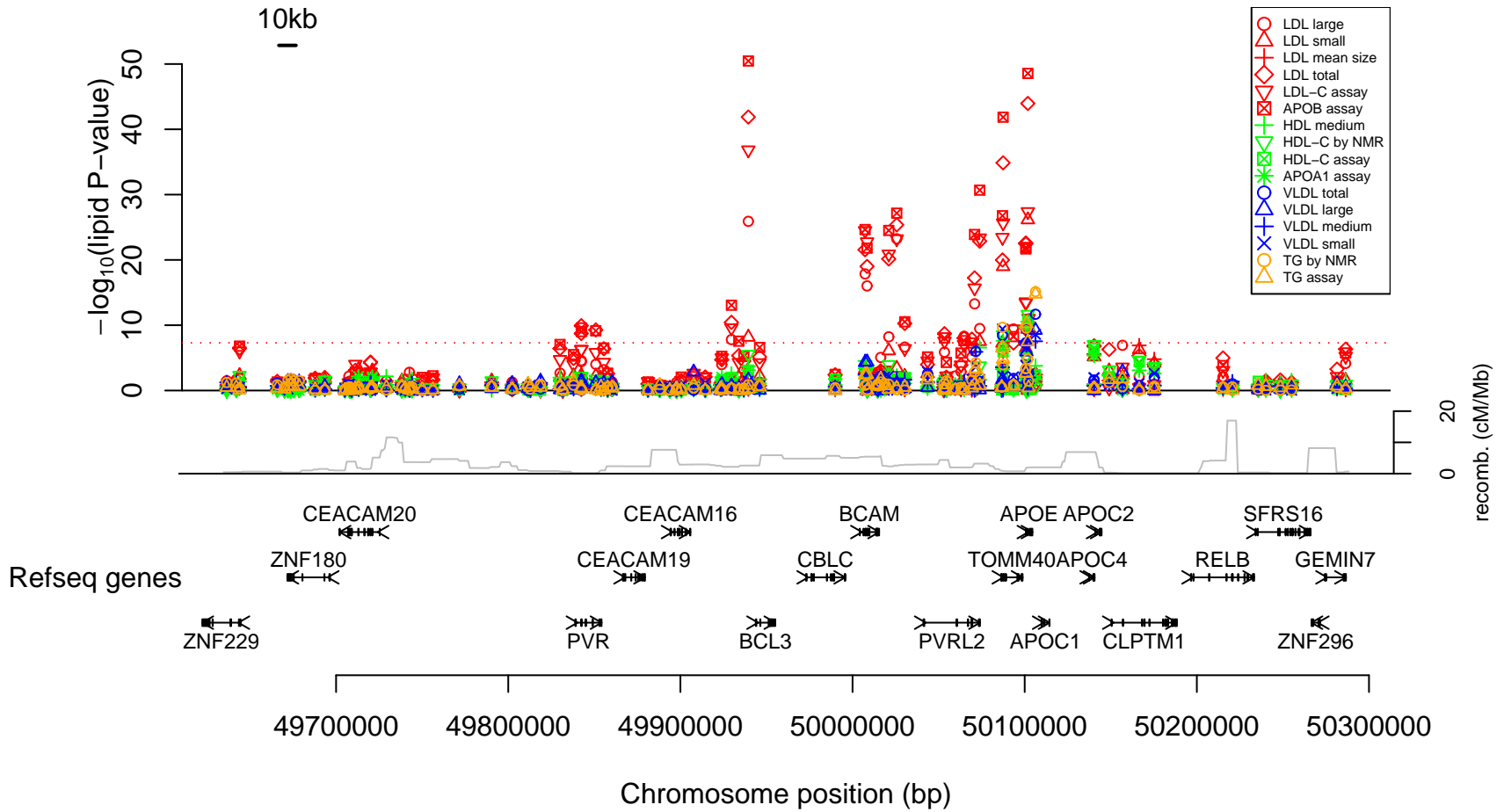
Lipid fraction associations at 18q21.1



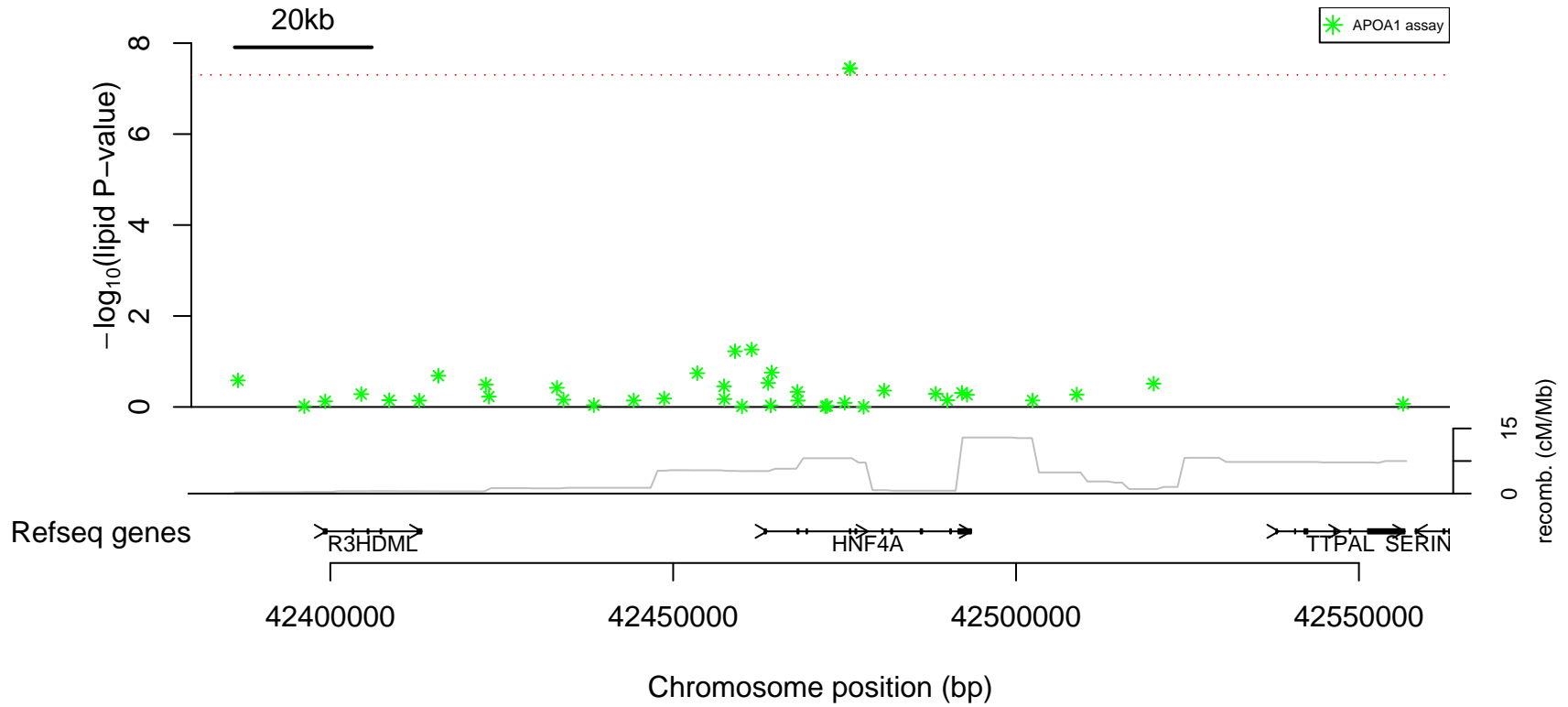
Lipid fraction associations at 19p13.2



Lipid fraction associations at 19q13.32



Lipid fraction associations at 20q13.12.A



Lipid fraction associations at 20q13.12.B

