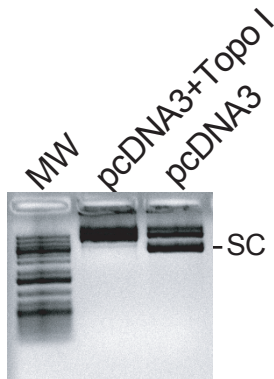
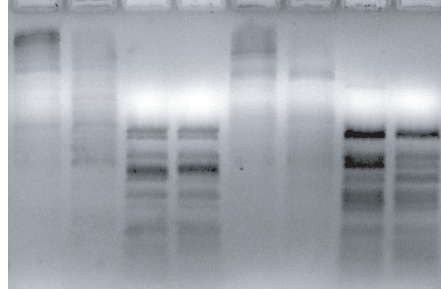


A



B

Topo	-	+	-	+	-	+	-	+
M.CviPI	+	+	-	-	+	+	-	-
R.HaeIII	+	+	+	+	-	-	-	-
R.Apal	-	-	-	-	+	+	+	+



C

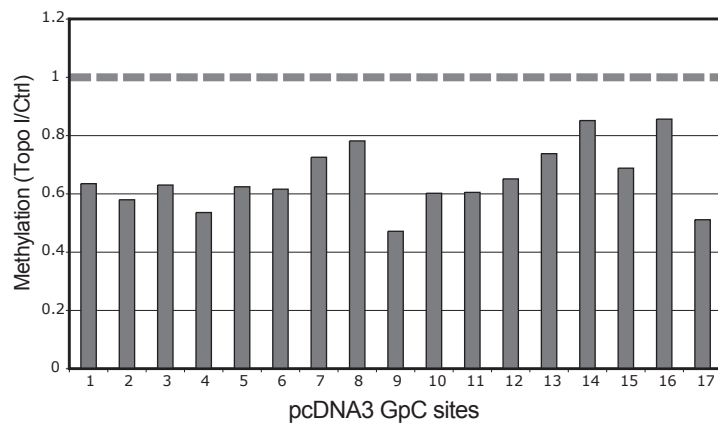


Figure Sup2. M.CviPI preferentially methylates topologically relaxed plasmid DNA.

A: pcDNA3 plasmid treated with topoisomerase I showed different gel migration. B: Topoisomerase treated DNA was subjected to in vitro methylation followed by digestion with methylase-sensitive restriction endonucleases (HaeIII and Apal). C: Comparison of the methylation levels between control and topoisomerase I-treated cells. Methylation was determined by bisulfate treatment/sequencing in topoisomerase-treated and control plasmids.