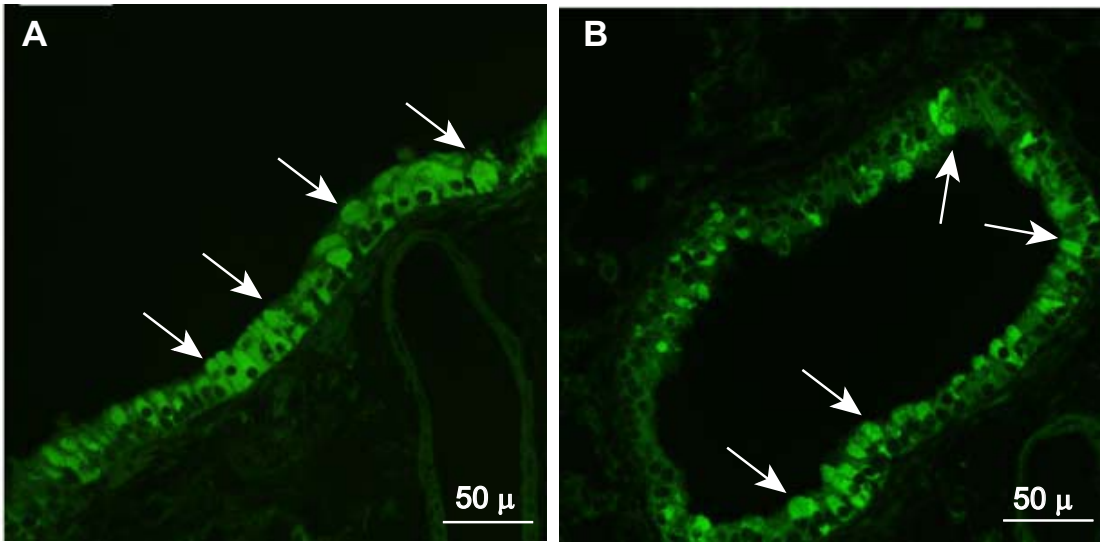


Supplemental Figure 1



Supplemental Fig. 1 Immunostaining of goblet cells with antibody to muc5AC antibody. Paraffin lung sections of mice from elastase/LPS treated mice were incubated with antibody to muc5AC and the bound antibody was detected by second antibody conjugated with AlexaFluor 488. Mucin muc5AC positive goblet cells were observed in both large (A) and small airways (B). Images shown are typical of 4-6 independent experiments.