

SUPPLEMENTAL FIGURE LEGENDS

Supplemental Figure 1: TDP-43 is not a component of cytoplasmic inclusions in

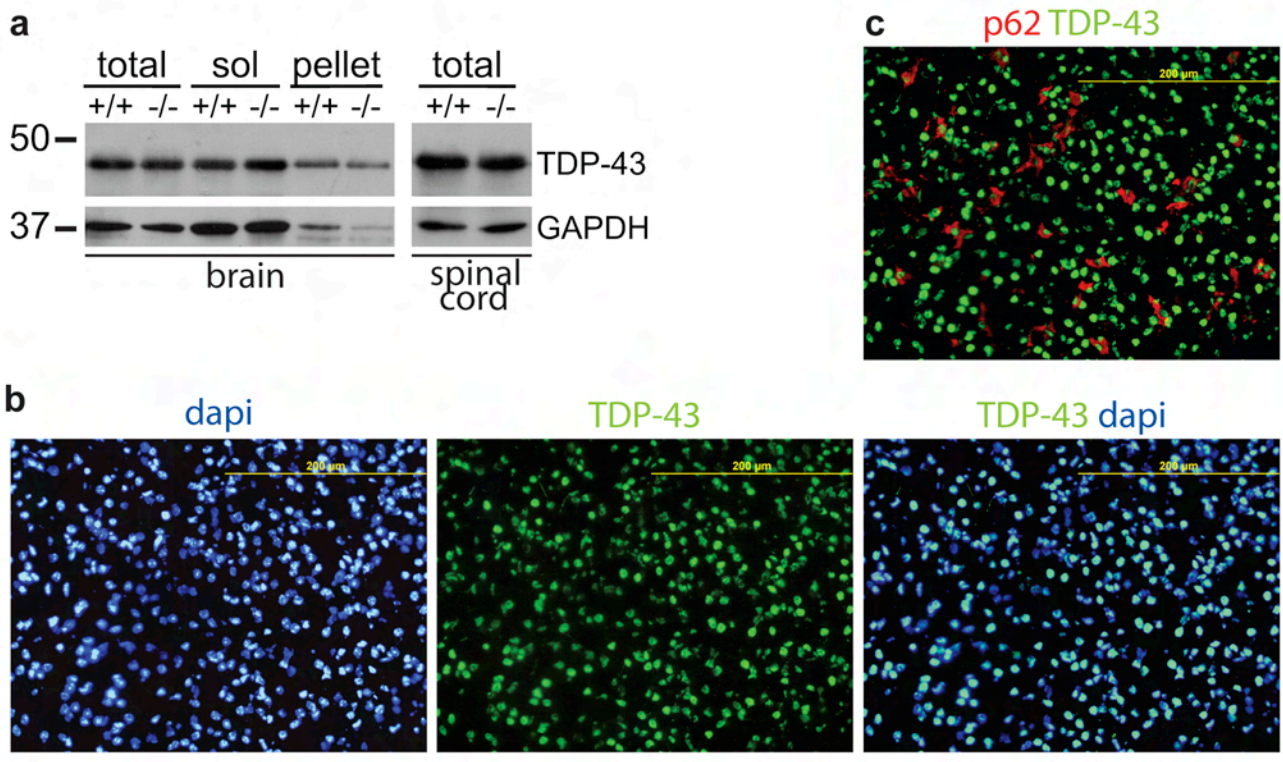
***Fig4*^{-/-} brain.** (a) The amount of TDP-43 protein detected by Western blotting is not increased in *Fig4*^{-/-} brain. Each lane contains 30 ug protein. (b) TDP-43 in mutant brain is located in DAPI-stained nuclei. (c) TDP-43 does not co-localize with cytoplasmic p62 in mutant brain.

Supplemental Figure 2: Accumulation of p62 in Bergmann glia of the *Fig4*^{-/-} cerebellum.

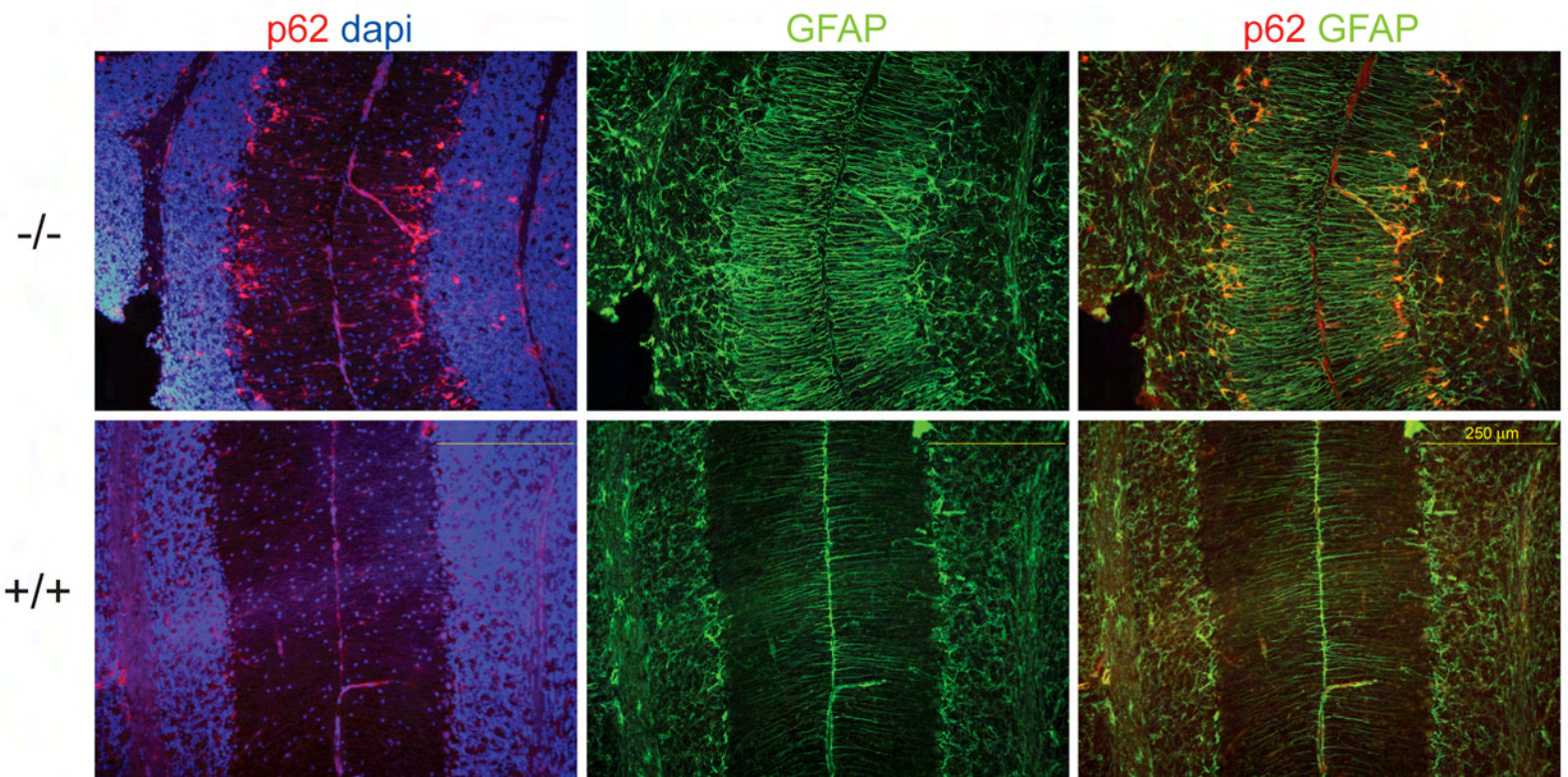
As shown in Figure 4b, Bergmann glia in mutant cerebellum stain intensely with anti-p62 and anti-GFAP. The intense GFAP staining of the processes of the mutant Bergmann glia resembles wildtype cells at an early stage of development.

Supplemental Figure 3. As early as one week of age, p62 can be detected at restricted sites in *Fig4*^{-/-} brain. See Legend to Figure 5.

Supplemental Figure 4: p62 does not accumulate in oligodendrocytes and microglia of *Fig4*^{-/-} brain. (a) Oligodendrocytes identified by *in situ* hybridization of MAG mRNA encoding myelin-associated glycoprotein do not contain p62. (b) Microglia identified by staining with anti-Iba-1 (green) do not co-stain for p62 (red). (c) Western blot of total brain homogenate (30 ug protein per lane) stained with anti-Iba-1. (



Supplemental figure-1 (Meisler)



Supplemental figure-2 (Meisler)

