

## SUPPLEMENTARY DATA

FIG. S1. Median transverse semi-thin sections of affected *A. nidus* stomata stained with 0.3 % (w/v) Sudan black B in 70 % ethanol. The arrows show the modified middle lamella of the ventral wall while the arrowheads indicate the cuticle, which have been stained. Treatments: (A) 12  $\mu\text{M}$  tunicamycin for 5 d, then the stomata were placed in distilled water for 7 d. (B) 25  $\mu\text{M}$  CPA for 24 h. Scale bars = 10 $\mu\text{m}$ .

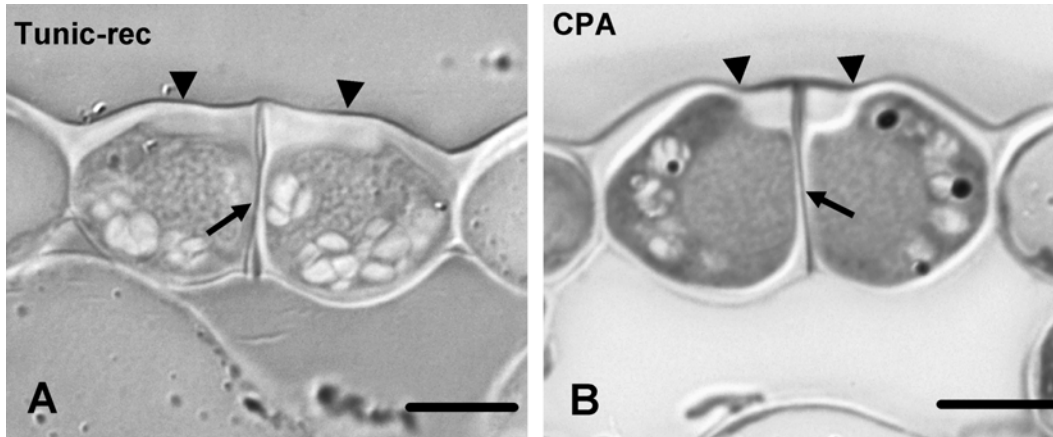


FIG. 2. Portion of the ventral wall of the stoma shown in Fig. 12A at higher magnification. The arrows indicate membranes of endoplasmic reticulum. VW: ventral wall. Scale bar = 250 nm.

