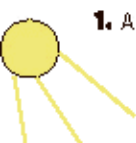


Type of file: figure

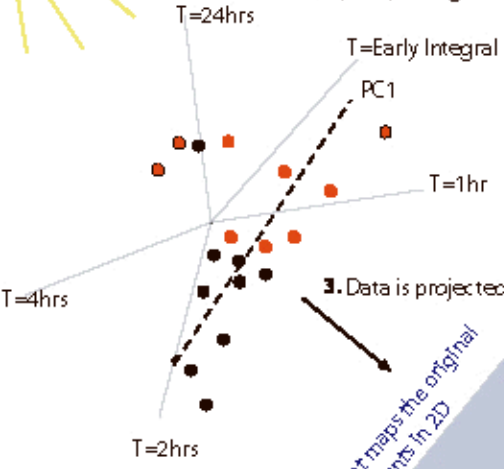
Label: 7

Filename: figure_7.tif

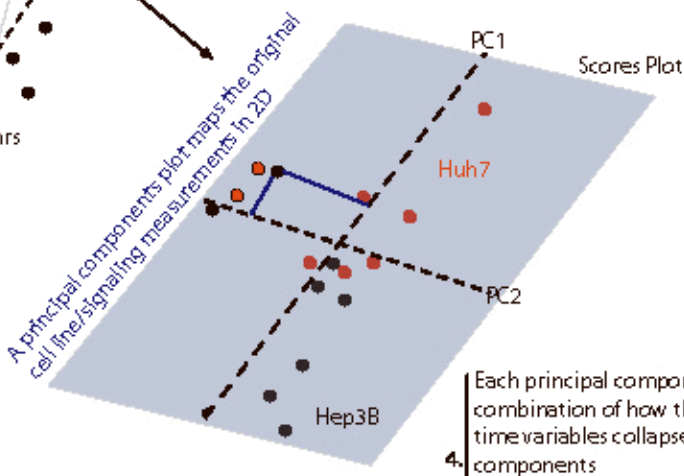


1. A projection is the data shadow of this light upon the principal components plot

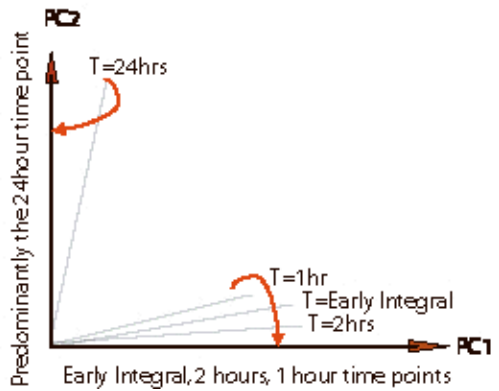
2. Cell line/phospho-signal measurements are plotted in terms of original time variables



3. Data is projected onto a 2 dimensional principal components (PC) plot



4. Each principal component is just a weighted combination of how the original measured time variables collapse onto the principal components



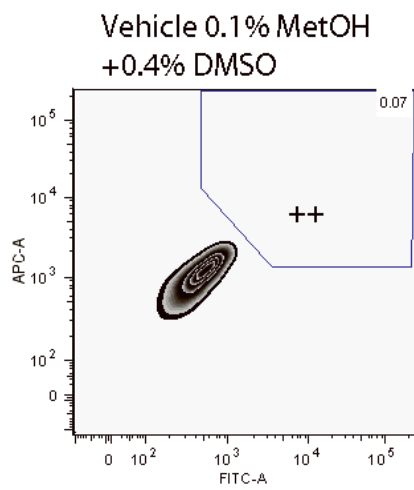
5. The first principal component captures the direction in which the most co-variation is seen. The second principal component captures the second most.

Type of file: figure

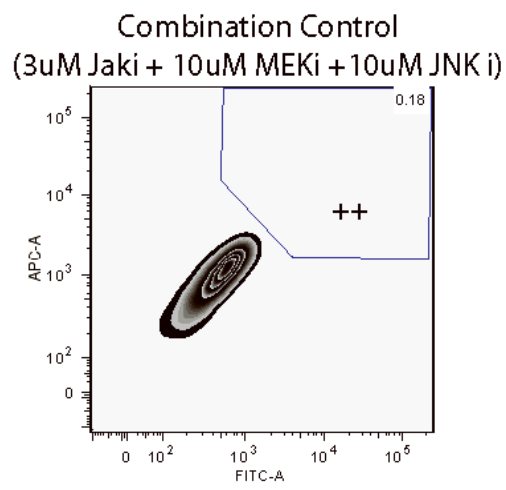
Label: 8

Filename: figure_8.tif

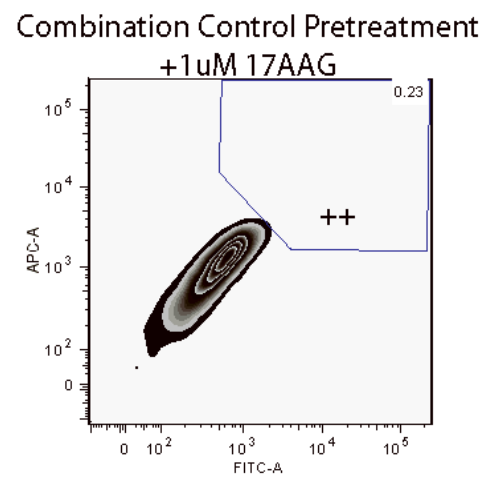
Pritchard et al. Supplementary Figure 2



FSC-A, SSC-A subset
491168.fcs
Event Count: 11353



FSC-A, SSC-A subset
491170.fcs
Event Count: 10299



FSC-A, SSC-A subset
491176.fcs
Event Count: 10593