

Supporting Information

Moench et al. 10.1073/pnas.0911046106

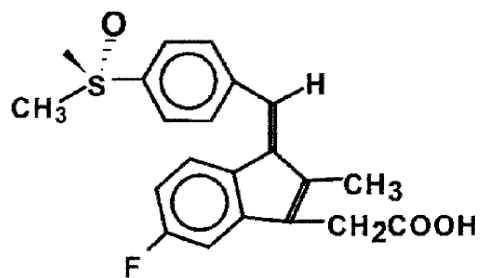


Fig. S1. The structure of sulindac.

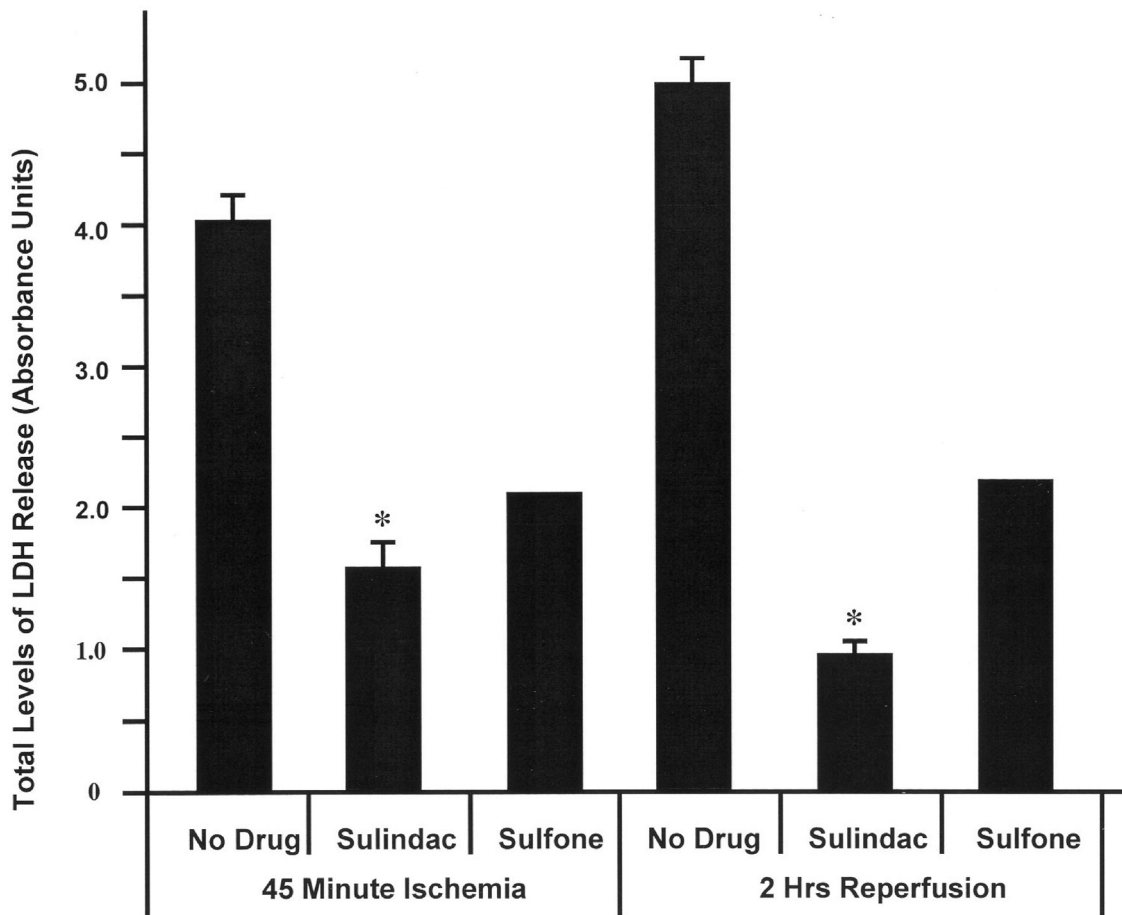


Fig. S2. Effect of feeding sulindac sulfone on LDH levels on the Langendorff heart after ischemia and reperfusion. The animals were fed 0.2 mg of sulindac sulfone per day for 2 days. The other experimental conditions are as described in Fig. 2 of the main text.