

Figure S2a: Deuterium content in each segment of WT SOD1. **Green**, Cu/Zn WT; **red**, Cu deficient WT.

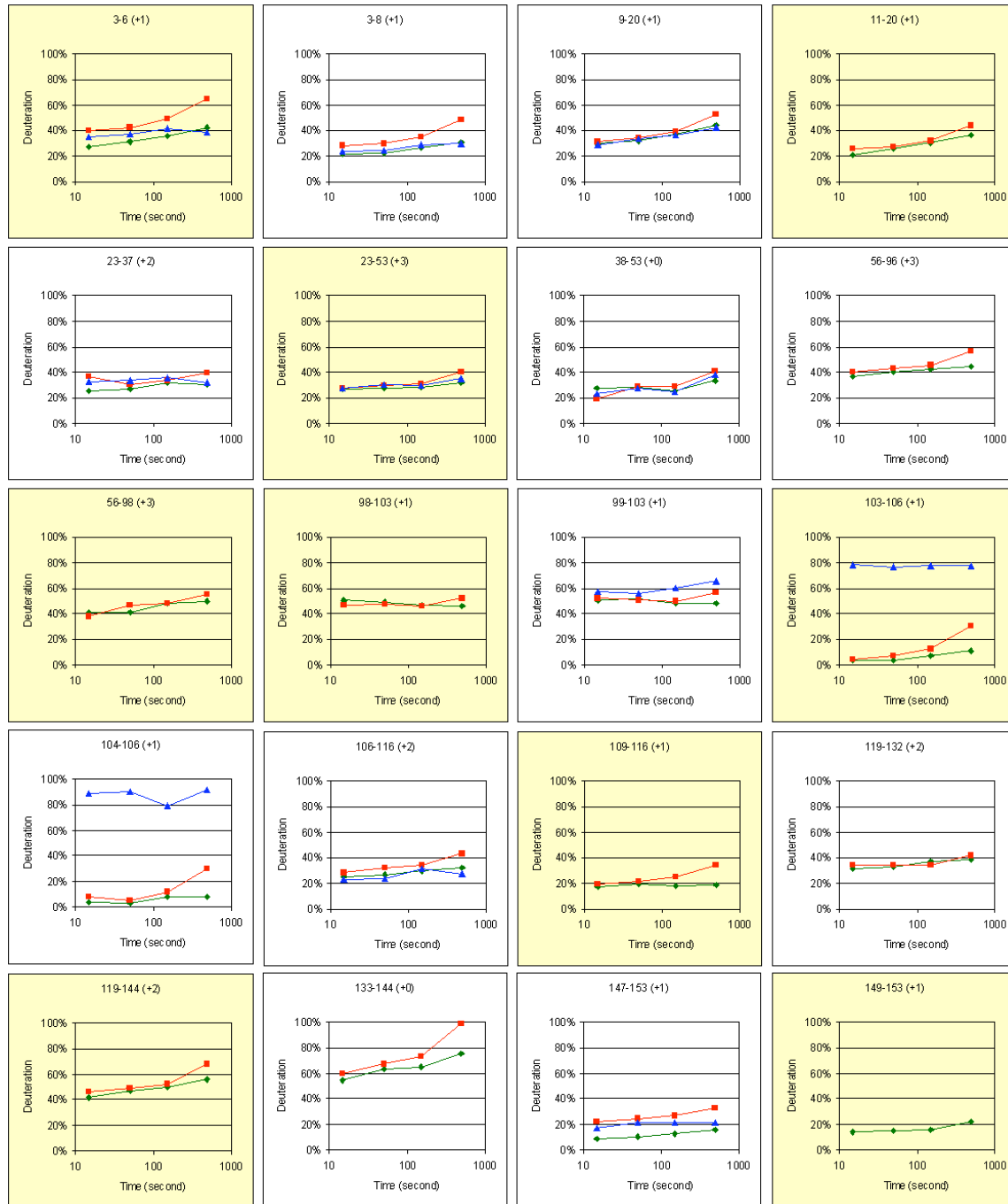


Figure S2b: Deuterium content in each segment of SOD1. **Green**, WT; **red**, A4V; and **blue**, H46R.

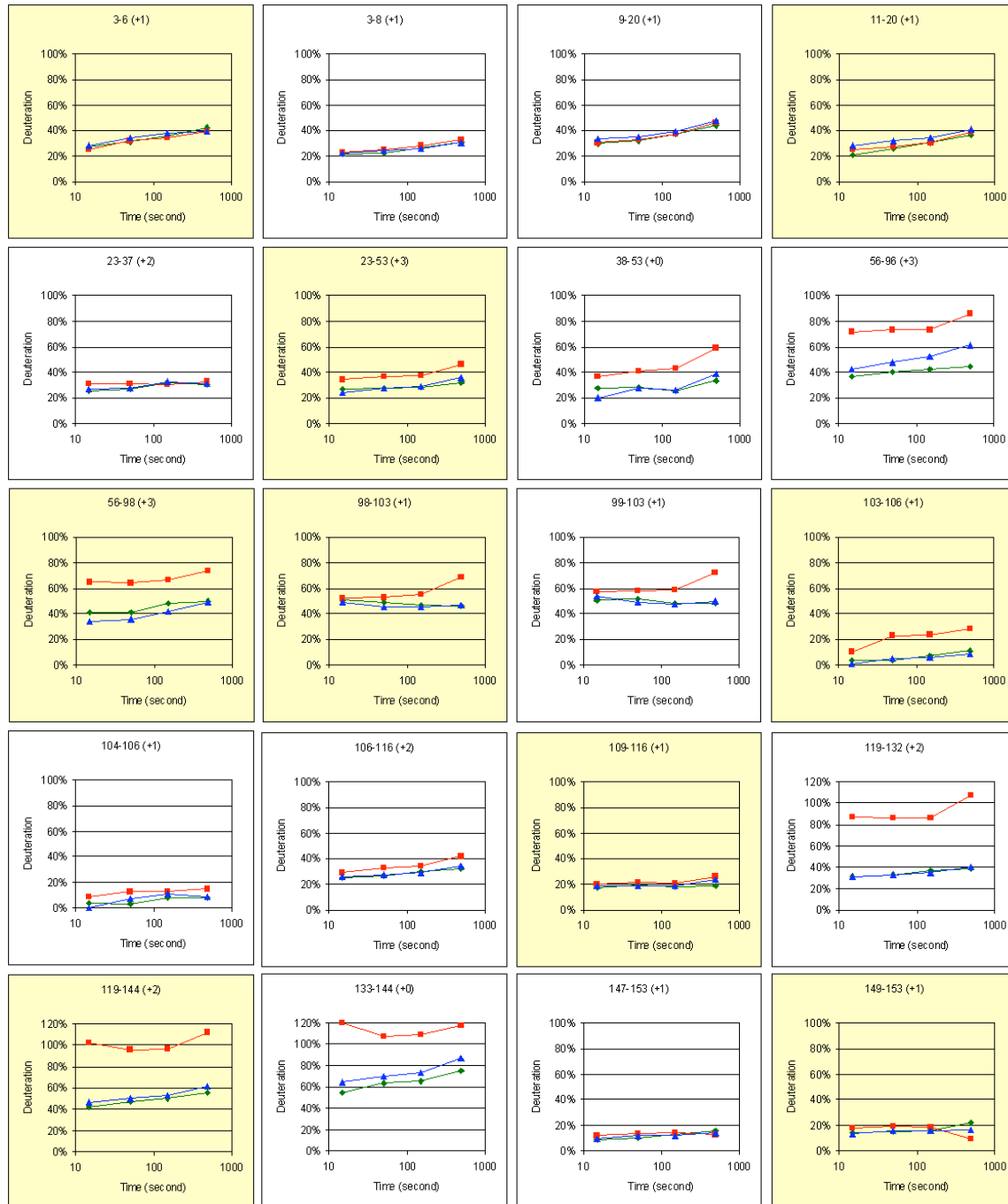


Figure S2c: Deuterium content in each segment of SOD1. **Green**, WT; **red**, G85R; and **blue**, G93A.

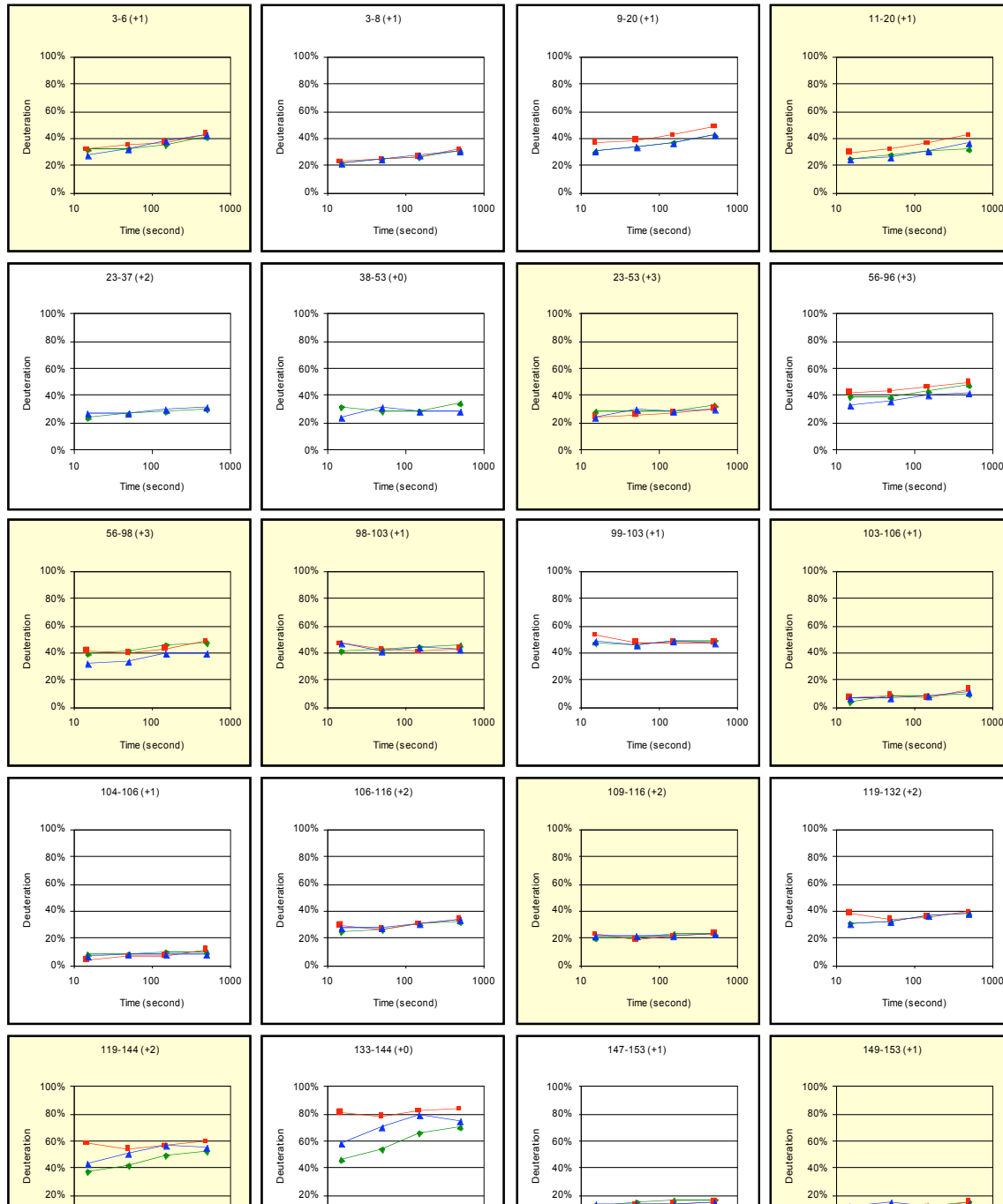


Figure S2d: Deuterium content in each segment of SOD1. **Green**, WT SOD1 (March); **red**, L38V; **blue**, D90A.

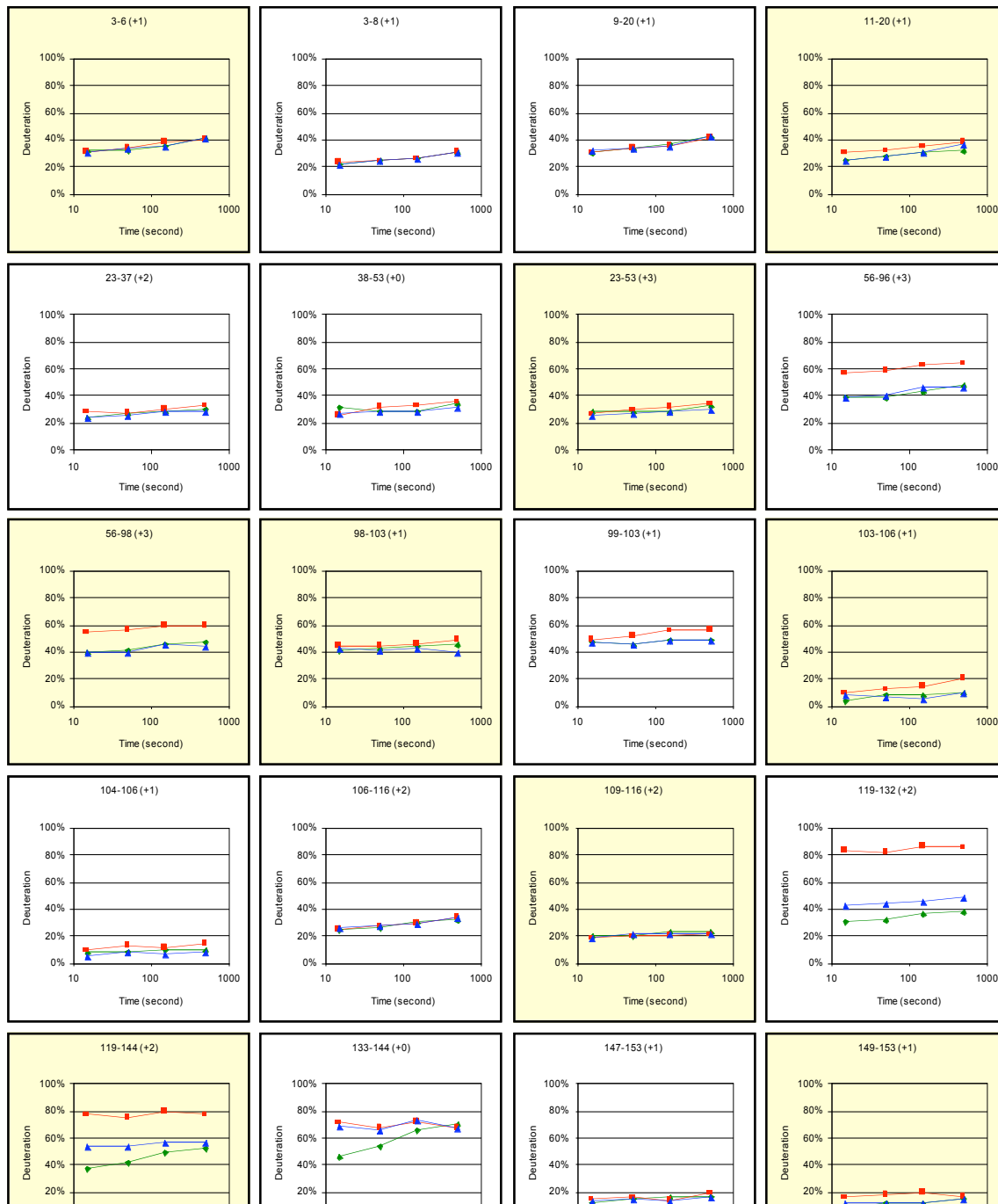


Figure S2e: Deuterium content in each segment of SOD1. **Green**, WT SOD1 (March); **red**, D124V; **blue**, “E133D”.

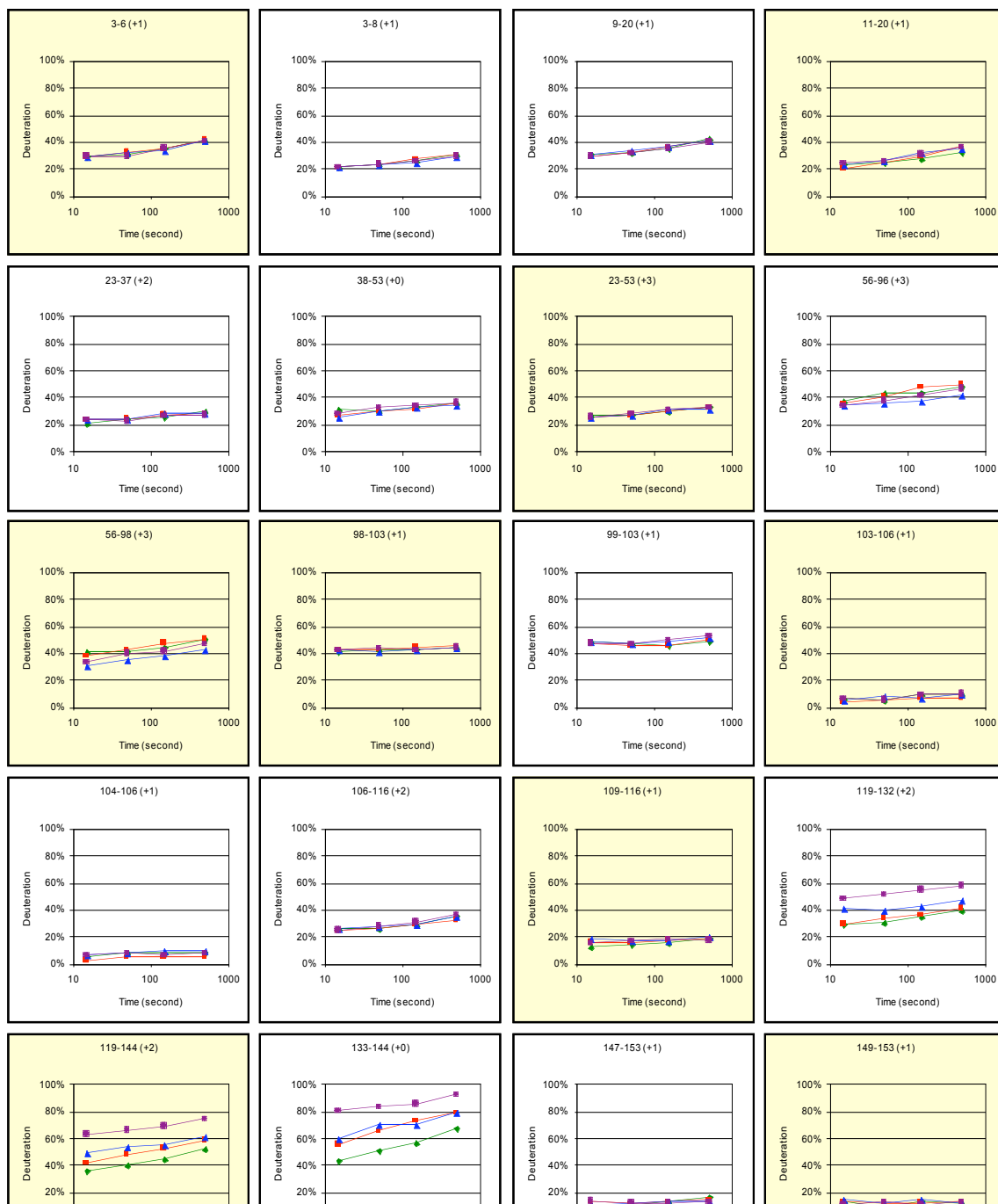


Figure S2f: Deuterium content in each segment of SOD1. **Green**, WT SOD1 (April); **red**, G41S; **blue**, G72S; **purple**, D76Y.

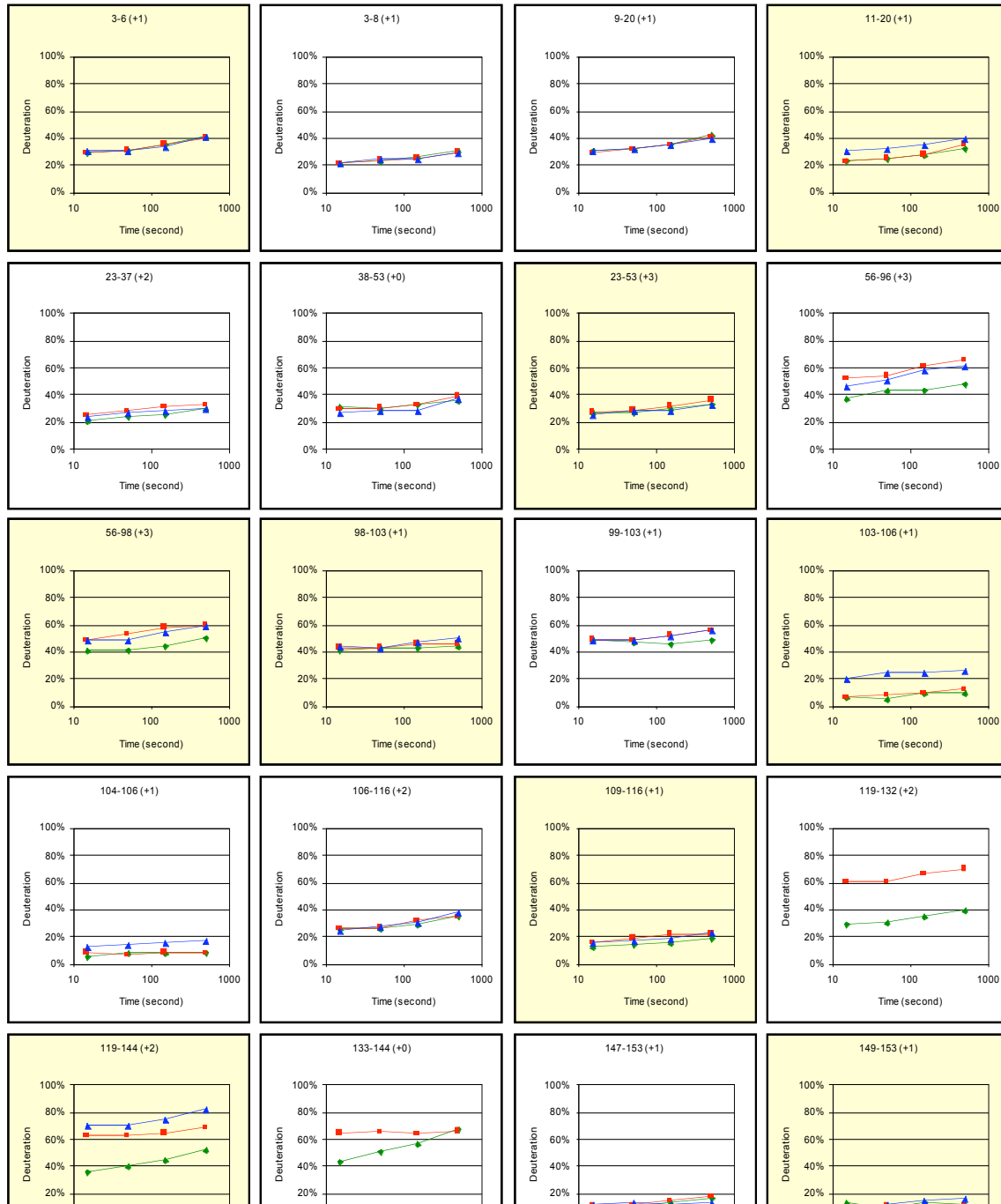


Figure S2g: Deuterium content in each segment of SOD1. **Green**, WT SOD1 (April); **red**, D125H; **blue**, S134N.