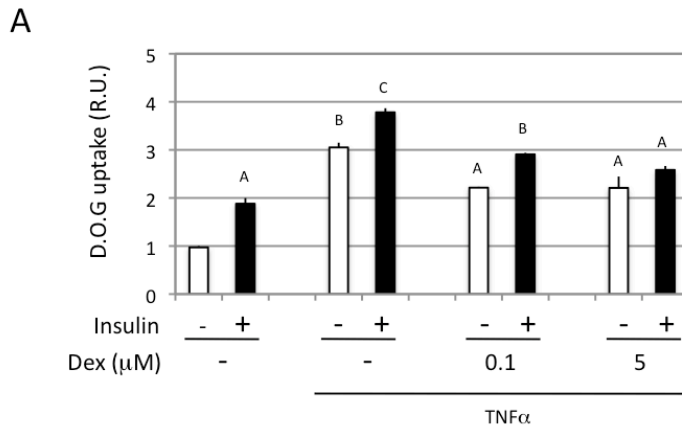
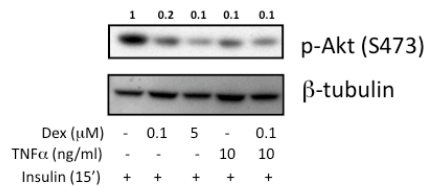


Suppl. Figure 4



B



Suppl. fig. 4. A. 3T3-L1 adipocytes were pretreated 24 hours in DMEM containing 10% FBS with drugs at indicated concentrations for dexamethasone and 10ng/ml TNF α . 3T3L1 were then serum starved for 3 h, and stimulated with 0.17nM insulin. Glucose uptake was determined after the addition of DOG and normalization to the total proteins contents. B. Western- blots were performed on proteins extracts from 3T3L1 utilized for the DOG uptake assay. Bars represent average values \pm S.D. of duplicates from at least three independent experiments. Letters A and B above the bars show statistical groups ($p < 0.05$).

