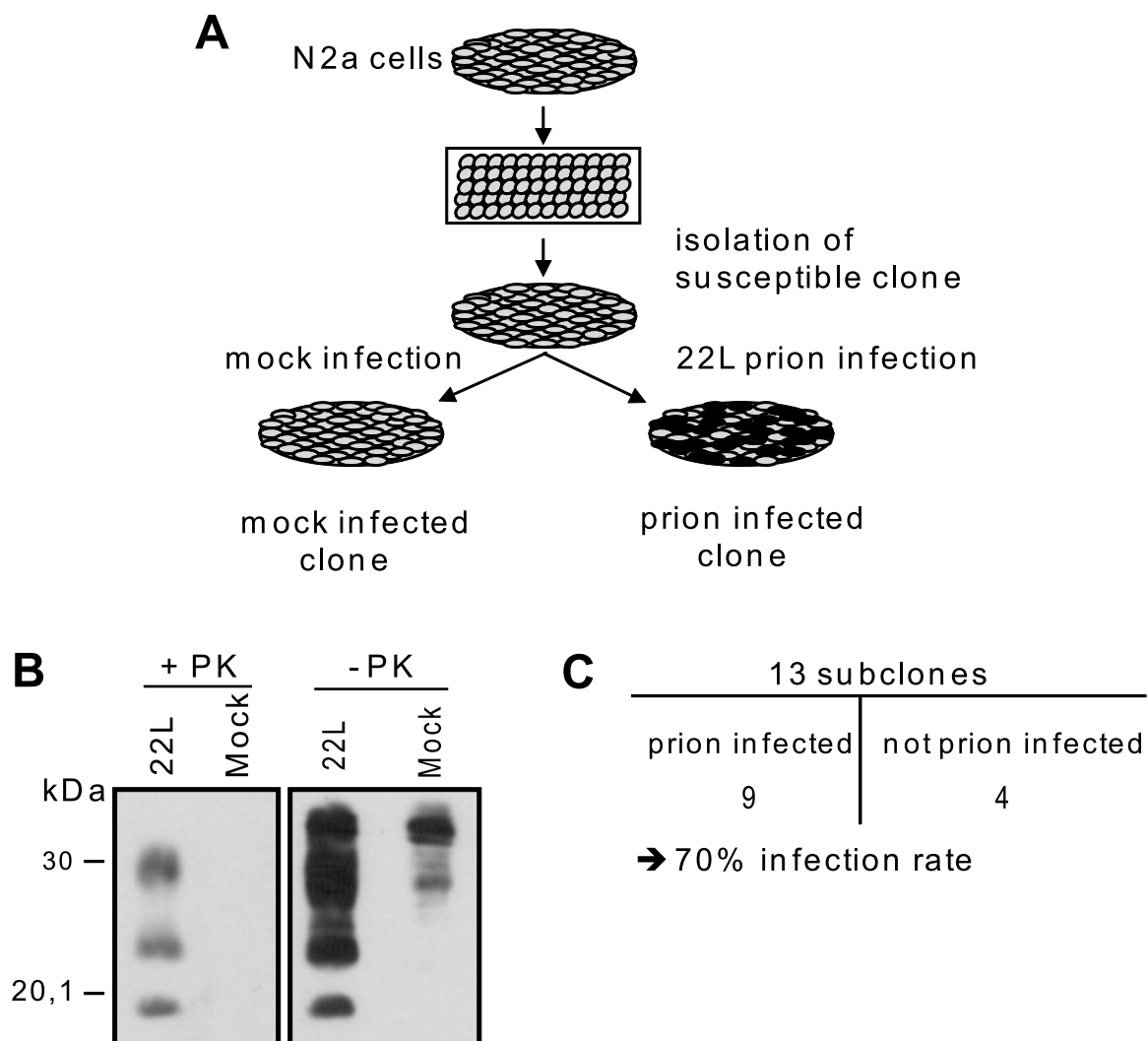


Supplementary Figure 1



Suppl. Figure 1

Isolation of an N2a clone highly susceptible to 22L prions.

(A) N2a cells were cloned by limiting dilution and single cell clones were tested for 22L prion susceptibility. Paired aliquots of cells were exposed to either 1% brain homogenate from a mouse terminally ill with 22L scrapie or to brain homogenate from an uninfected mouse (mock). Clones were subsequently passaged and tested for PrP^{Sc} formation. Black dots represent prion infected cells within the total population. (B) Western blot analysis of N2a clone 5 exposed to normal brain homogenate (mock) or 22L brain homogenate. Cells were lysed 6 passages post exposure to brain homogenates and lysates were left untreated (PK-) or subjected to proteinase K treatment (PK+). Western blots were developed using the mouse monoclonal antibody 4H11. (C) Clone 5 persistently infected with scrapie strain 22L was subcloned 18 passages post infection and single cell clones were tested for PrP^{Sc} content. The number of PrP^{Sc} positive cell clones per clones tested is given.