


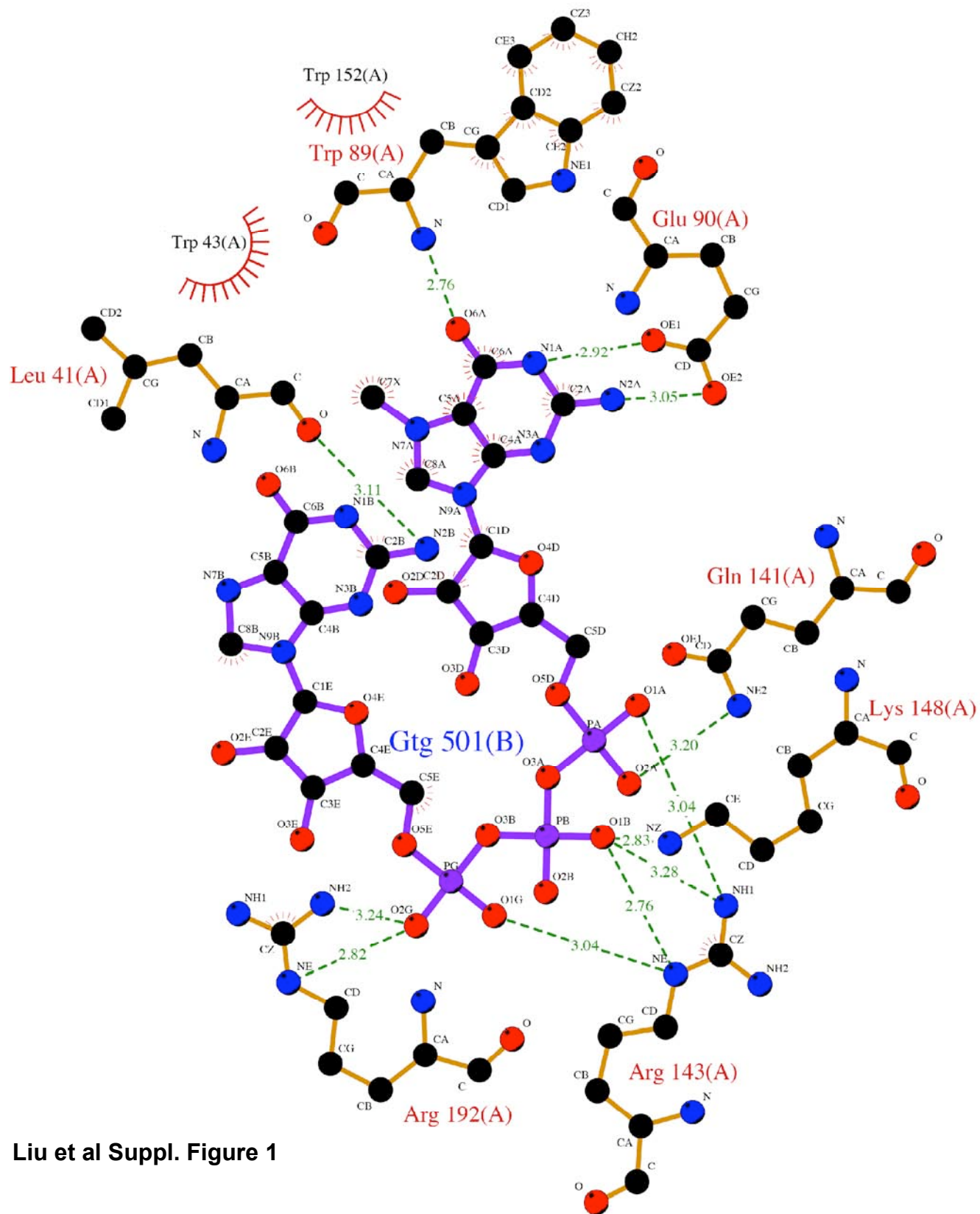
Supplemental Figures

Supplemental Figure 1. Schematic diagram of the *Schistosoma mansoni* eIF4E interaction network with the m⁷GpppG cap. The broken lines denotes the hydrogen-bonding interactions and “” denotes the hydrophobic interactions. The diagram was prepared using LigPlot (1).

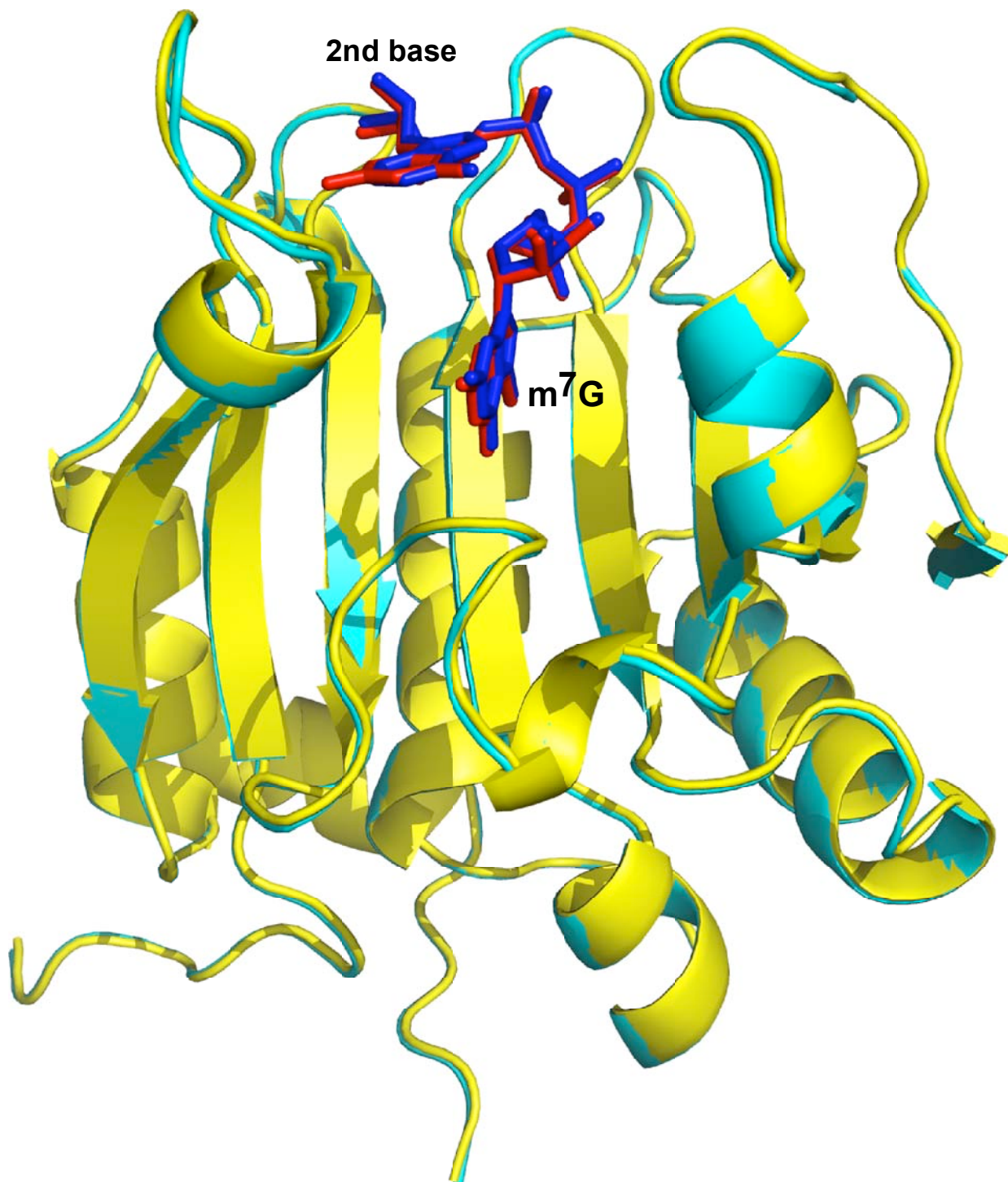
Supplemental Figure 2. Superimposition of schistosome eIF4E- m⁷GpppA and eIF4E- m⁷GpppG crystal structures. Schistosome eIF4E bound to m⁷GpppA (Blue, dinucleotide cap) is shown in blue and schistosome eIF4E bound to m⁷GpppG (Red, dinucleotide cap) is shown in yellow.

References

1. Wallace, A. C., Laskowski, R. A., and Thornton, J. M. (1995) *Protein engineering* **8**, 127-134



Liu et al Suppl. Figure 1



Liu et al Suppl. Figure 2