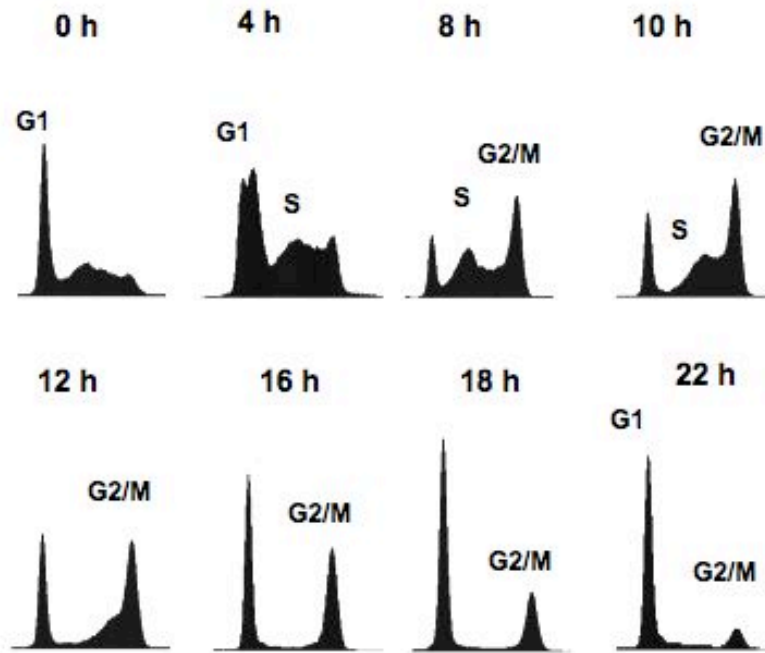


Fig. 1S



	0h	4h	8h	10h	12h	16h	18h	22h
<b>G2/M</b>	4.1	7.8	25.3	36.1	36.0	42.1	23.4	12.2
<b>S</b>	58.5	60.7	63.1	45.9	36.8	8.2	11.3	13.3
<b>G1</b>	37.4	31.5	11.6	18.0	27.2	49.7	65.3	74.5

← G1/S      S      G2      M      M/G1      G1 →

A. T7-FoxM1 + Plk1



B. T7-FoxM1 + KD Plk1



Fig. 3S

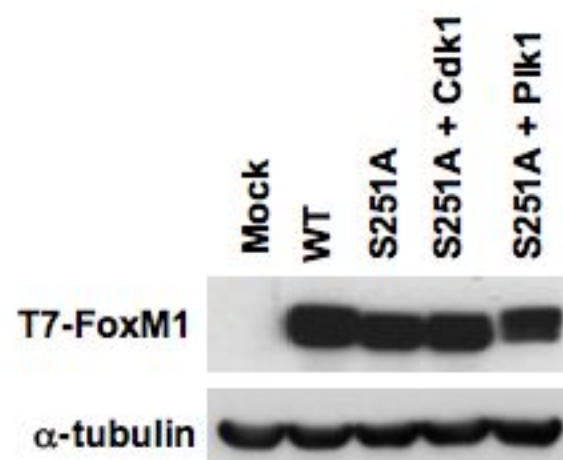


Fig.3S. U2OS cells were cotransfected with a vector expressing either T7FoxM1b WT or S251A proteins and a vector expressing Cdk1 or Plk1. The mobility of T7-FoxM1b protein was detected by western blot analysis using T7-tag mAb.