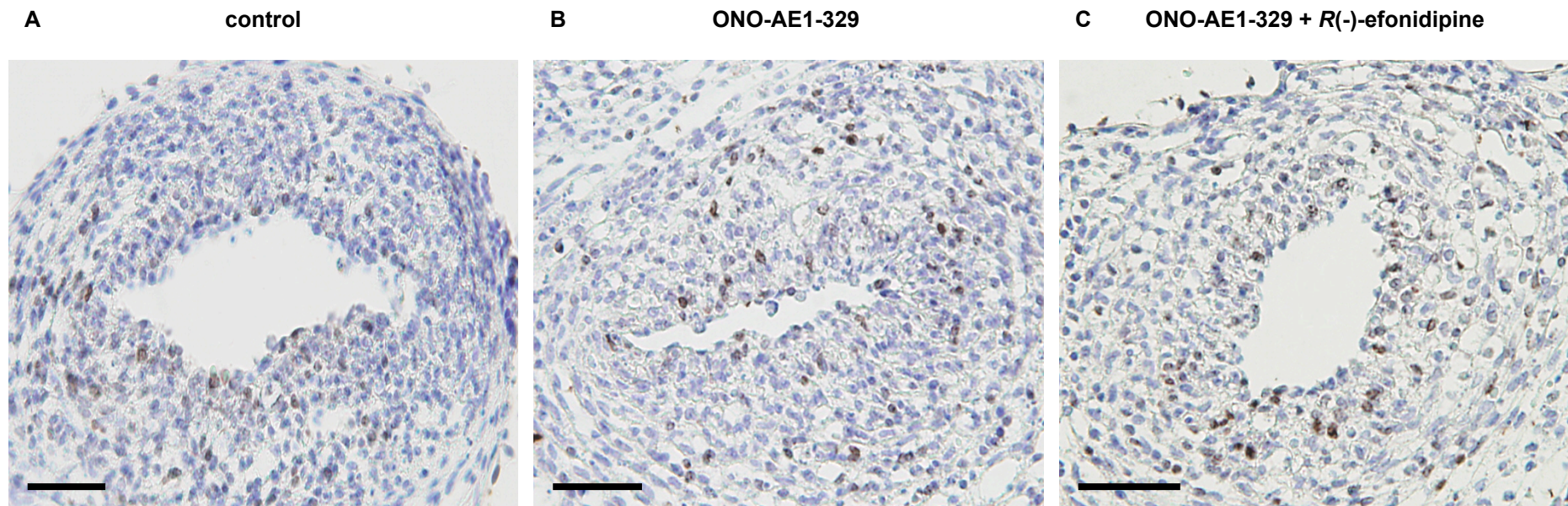


Supplemental Figure 6



Supplemental Figure 6. *Ki-67* staining when *R(-)*-efonidipine inhibited *EP4*-mediated intimal thickening of immature rat DA explants
(A) control. (B) ONO-AE1-329 (10^{-6} M). (C) ONO-AE1-329 (10^{-6} M) plus *R(-)*-efonidipine (10^{-6} M). Scale bars, 50 μ m.