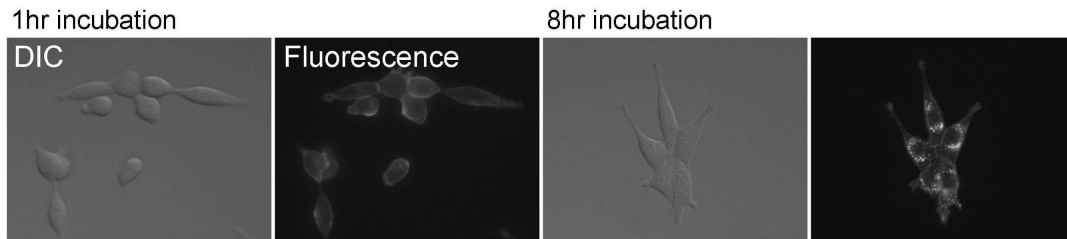
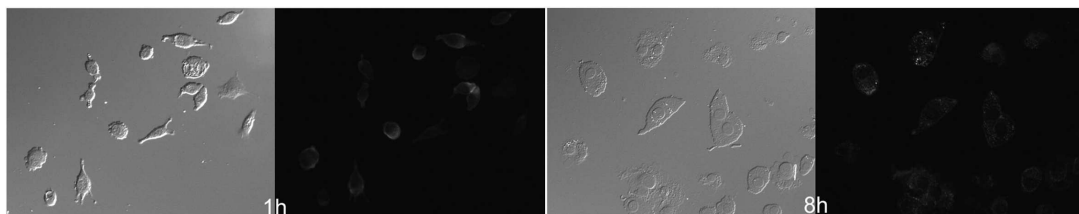


**A**

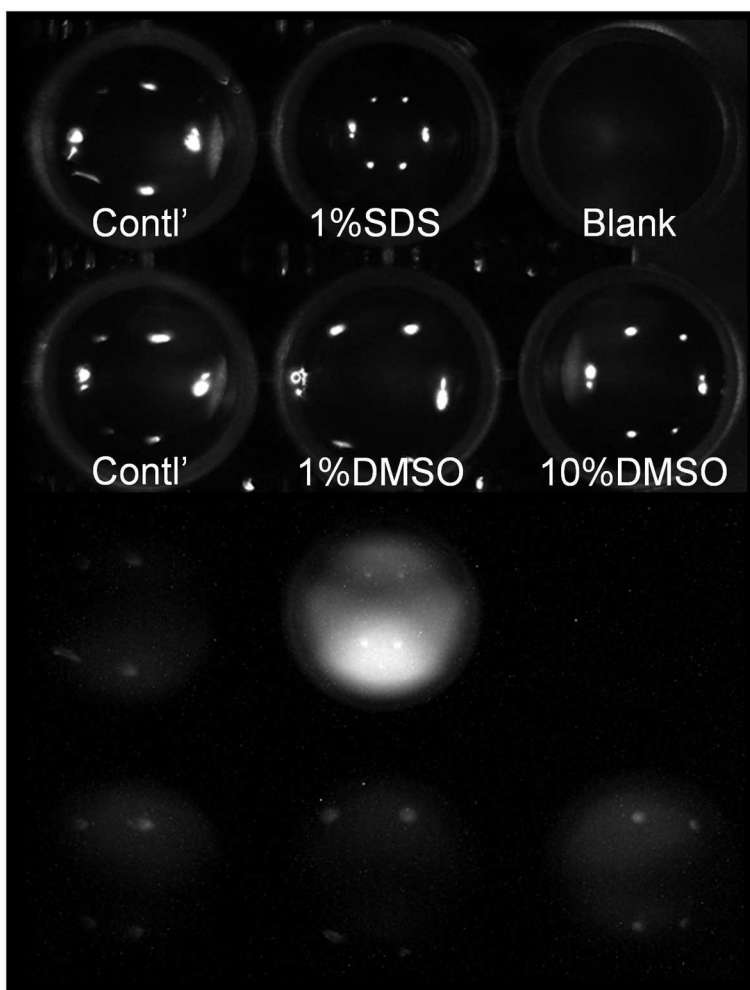


**B**



**Supplemental figure 1. Always on conjugates show cell surface receptors**

The always-ON fluorescence probe, trastuzumab-Rhodamine Green (A) and trastuzumab-Cy7 was incubated with 3T3/HER2 cells in the same manner as ICG conjugates. The surface fluorescence was detected after 1hr incubation, which shows the trastuzumab-Rhodamine Green and trastuzumab-Cy7 binding to the surface HER2 receptors. Many fluorescent dots were observed after the antibody internalization by 8hr incubation as well as the surface fluorescence with both conjugates.



**Supplemental figure 2. DMSO does not de-quench the quenched ICG-trastuzumab conjugate.**

The de-quenching capacity of the quenched trastuzumab-ICG compared SDS with DMSO. DMSO does not efficiently de-quench the quenched trastuzumab-ICG as SDS does.