

Legends to Supplemental Figures

Supplemental Fig. 1. Densitometric analysis of translation factor levels.

Western blotting analysis was performed to examine the protein levels of translation factors in neurons following BDNF treatment (50 ng/ml) for 5 days as shown in Fig.3. Bands were analyzed using densitometry. Open (white) bars indicate control and filled (black) bars indicate BDNF-treated group. Bars represent the means and SD n=4-6. There are no statistical significance in all proteins listed by t-test. *p*-values are shown in the figure.

Supplemental Fig. 2. Immunocytochemistry with anti-eEF2, P-eEF2 and MAP-2.

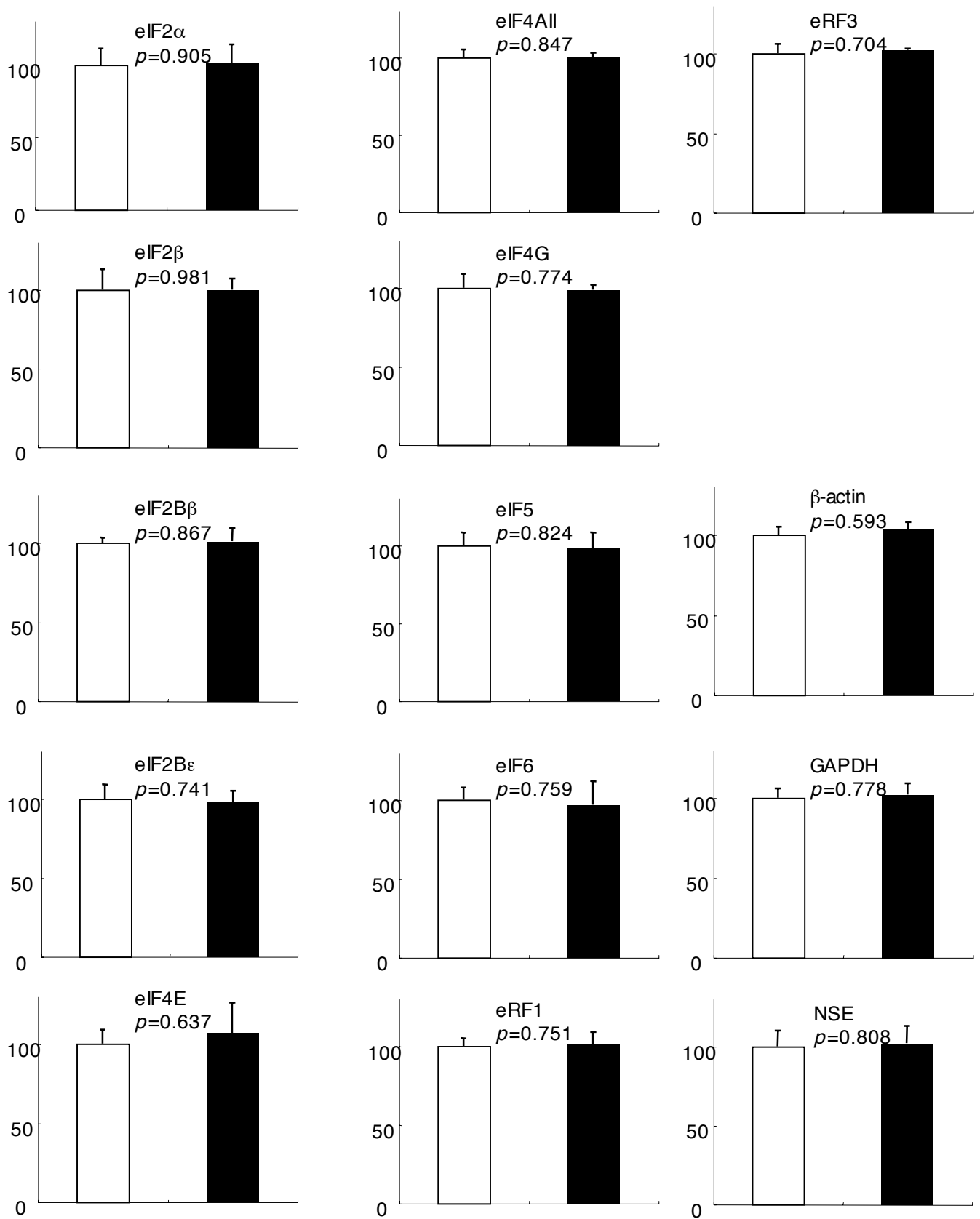
Neurons treated without (A,B,E,F) or with BDNF (50ng/ml) (C,D,G,H)) for 5 days were immunostained with anti-eEF2 (A and C), anti-P-eEF2 (E and G) and anti-MAP-2 (B,D,F,H) antibodies. Note that BDNF had no effects on MAP-2 immunocytochemistry in their number, shapes and intensities.

Supplemental Fig. 3. Effects of chronic BDNF treatment on the levels of eEF1A and S6 proteins.

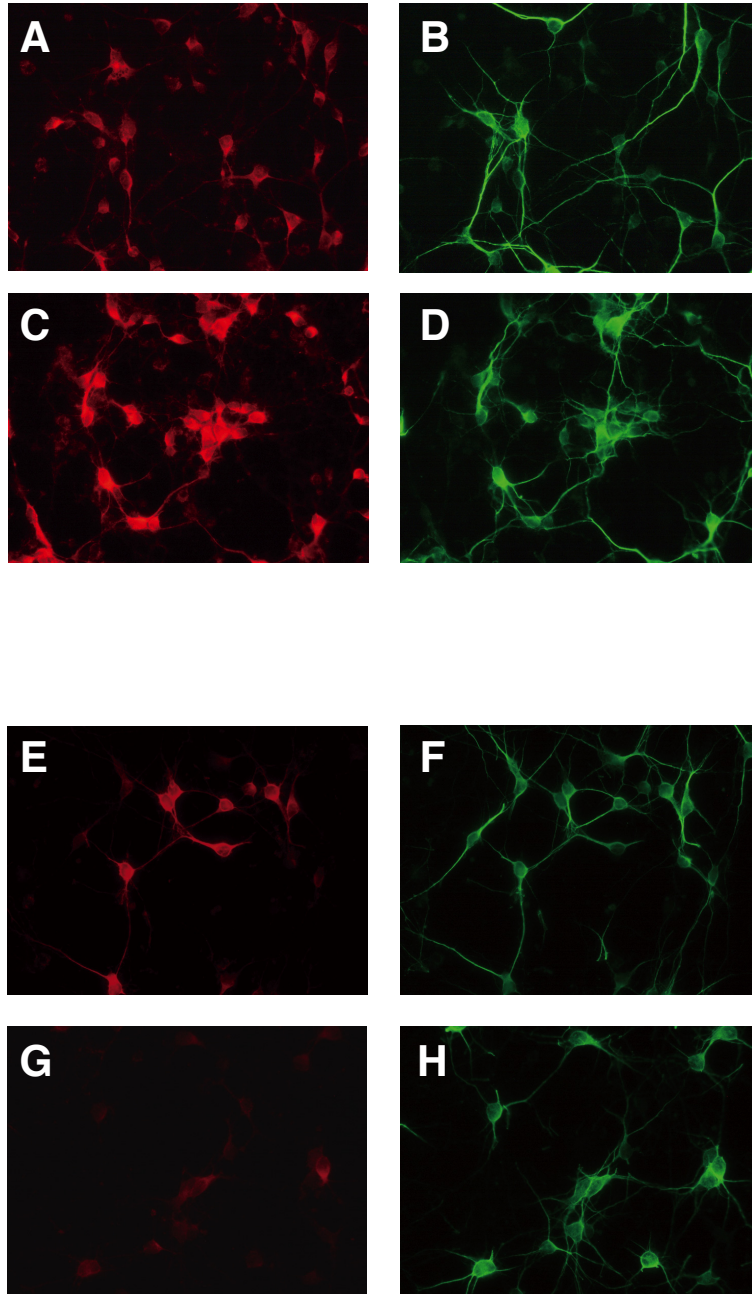
Western blotting and densitometric analysis were performed to examine the protein levels of eEF1A (A) and S6 (B), both have 5'TOP sequences in their mRNA, in neurons following BDNF treatment (50 ng/ml) for 5 days. Bars represent the means \pm SD (n = 9). There are no statistical significances (*t*-test). *p*- values are shown in the figure.

Supplemental Fig. 4. Effects of chronic BDNF treatment on the phosphorylation status of several initiation factors and the modulator.

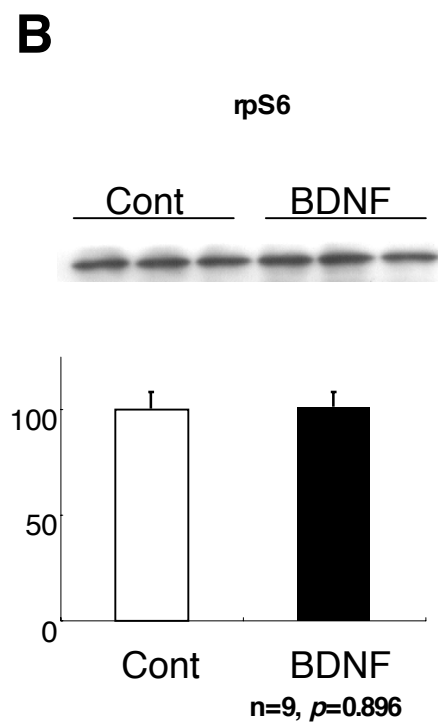
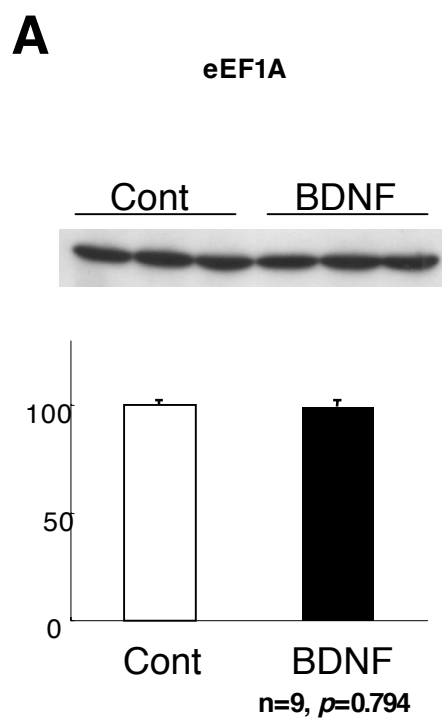
Western blotting and densitometric analysis were performed to examine the phosphorylated protein levels of eIF2 α , eIF4E and eIF4G in neurons following BDNF treatment (50 ng/ml) for 5 days. 4EBP and phospho-4EBP (T37/46) levels were also examined. Bars represent the means \pm SD (n = 3-6). *p*-values are shown in the figure.

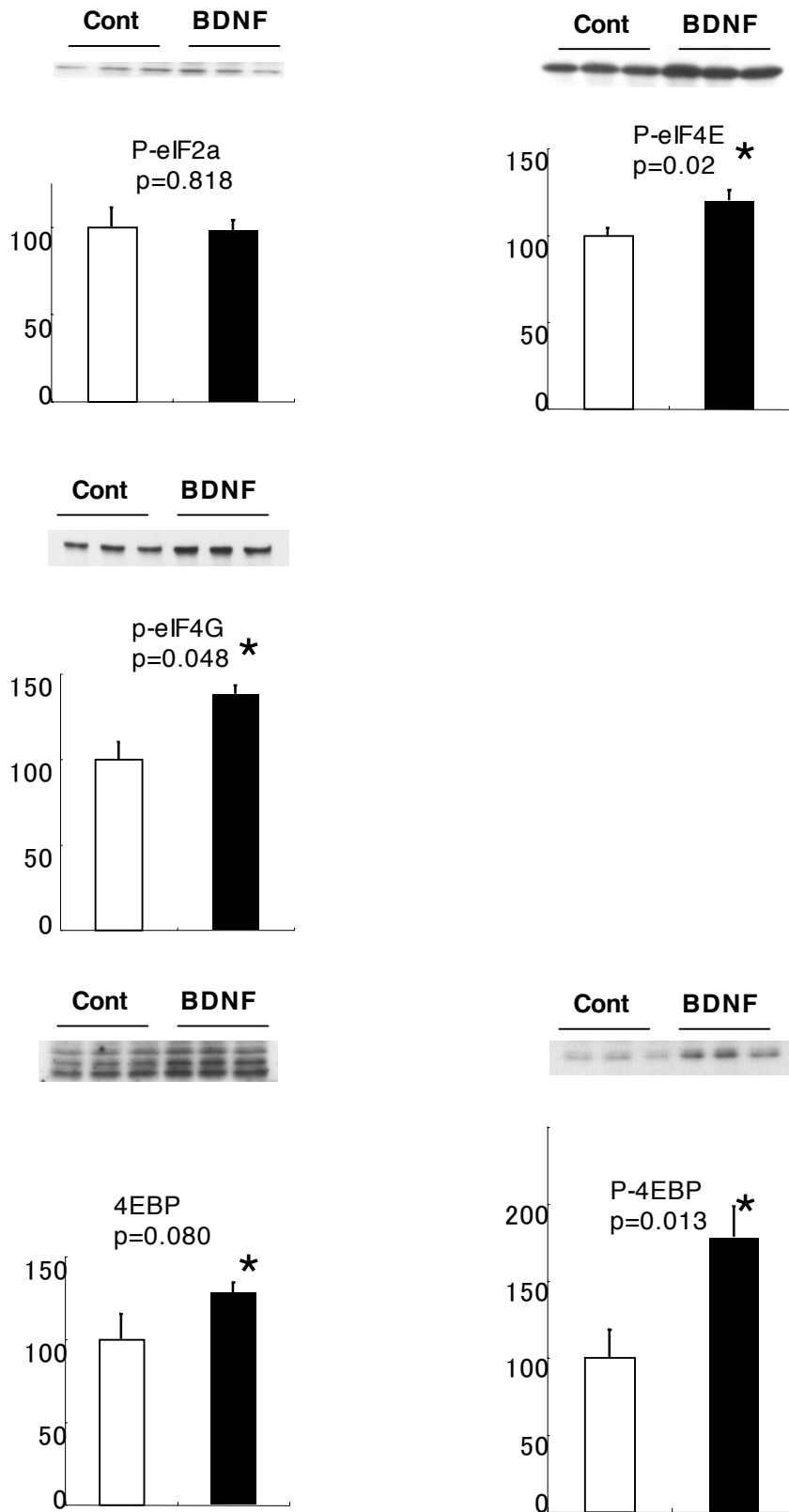


Supplemental Fig.1



Supplemental Fig.2





Supplemental Fig.4