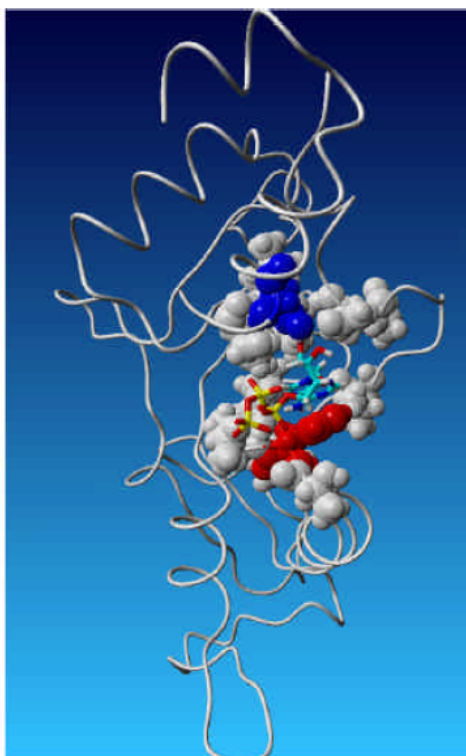


### Supplementary Fig 3



Representation of the ATP binding site in the AtCLCa homology model. The structure of the two CBS domains (CBS1 on the bottom and CBS2 on the top) are represented as tubes. ATP is represented as sticks and coloured according to elements (*red*: Oxygen, *blue*: nitrogen, *yellow*: phosphorus, *cyan*: carbon, *white*: hydrogen). The residues contacting ATP are shown as spheres. The mutated residues H620 and D753 are highlighted red and blue, respectively.