

Supporting Information (Part B) for

**Allenyl Azide Cycloaddition Chemistry. Exploration of the Scope and Mechanism of Cyclopentennelated Dihydropyrrole Synthesis through Azatrimethylenemethane (ATMM) Intermediates.**

*Ken S. Feldman,<sup>\*†</sup> Malliga R. Iyer,<sup>†</sup> Carlos Silva López<sup>§</sup> and Olalla Nieto Faza<sup>§</sup>*

Department of Chemistry, The Pennsylvania State University, University Park, Pennsylvania 16802, USA, Departamento de Quimica Organica, Universidade de Vigo, Lagoas Marcosende, 36200, Vigo, Galicia, Spain, and Department of Chemistry, University of Minnesota, 207 Pleasant St. SE, Minneapolis, Minnesota 55455-0431, USA

<b>23e</b> <sup>1</sup> H NMR	S2
<b>23e</b> <sup>13</sup> C NMR	S3
<b>25</b> <sup>1</sup> H NMR	S4
<b>25</b> <sup>13</sup> C NMR	S5
<b>26</b> <sup>1</sup> H NMR	S6
<b>26</b> <sup>13</sup> C NMR	S7
<b>28</b> <sup>1</sup> H NMR	S8
<b>28</b> <sup>13</sup> C NMR	S9
<b>30a</b> <sup>1</sup> H NMR	S10
<b>30a</b> <sup>13</sup> C NMR	S11
<b>30b</b> <sup>1</sup> H NMR	S12
<b>30b</b> <sup>13</sup> C NMR	S13
<b>30c</b> <sup>1</sup> H NMR	S14
<b>30c</b> <sup>13</sup> C NMR	S15
<b>32a</b> <sup>1</sup> H NMR	S16
<b>32a</b> <sup>13</sup> C NMR	S17
<b>32b</b> <sup>1</sup> H NMR	S18
<b>32b</b> <sup>13</sup> C NMR	S19
<b>32c</b> <sup>1</sup> H NMR	S20
<b>32c</b> <sup>13</sup> C NMR	S21

```

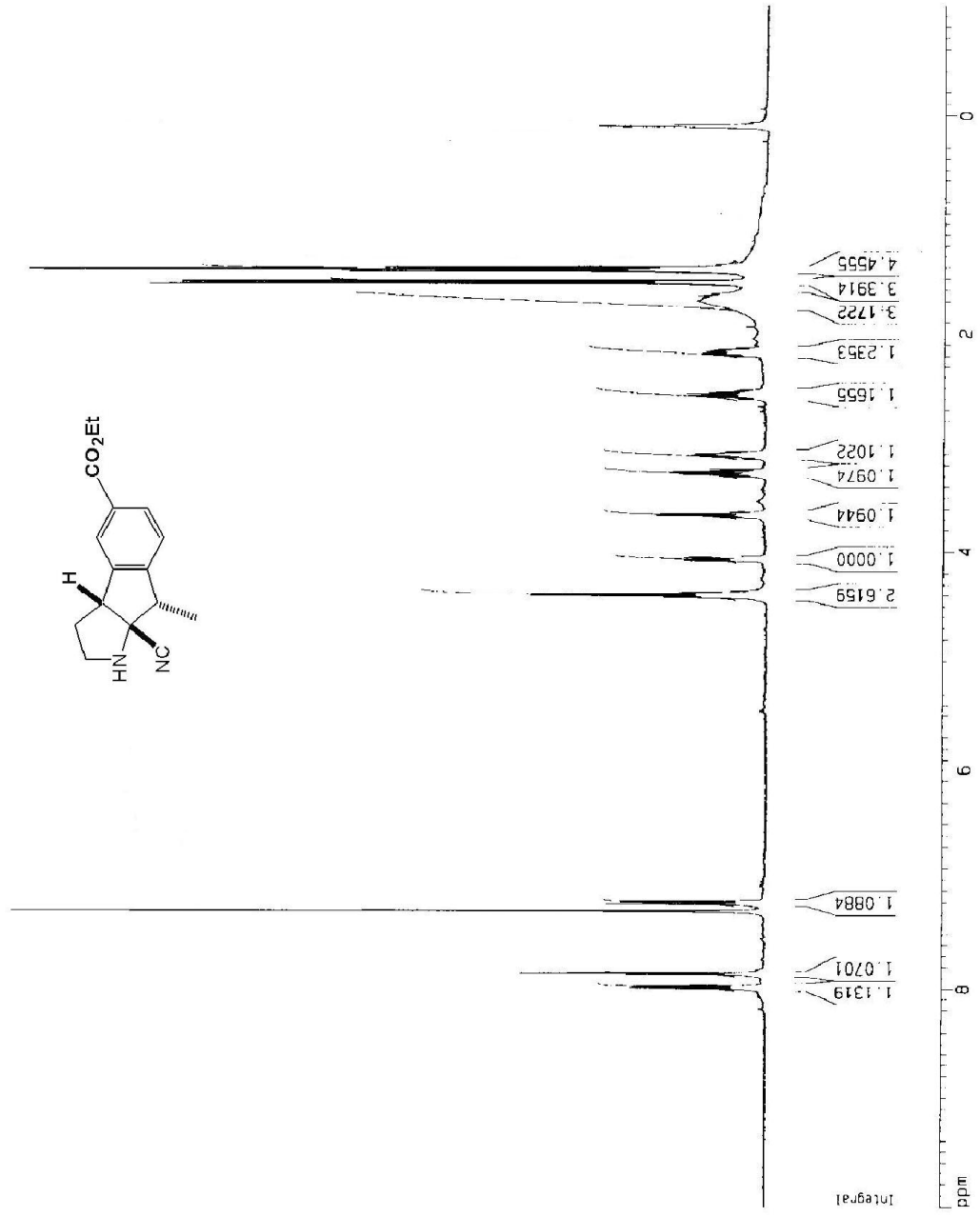
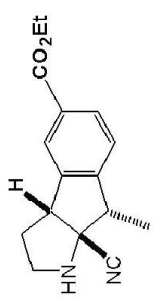
Current Data Parameters
NAME      MRI-Aug15-04
EXPNO    1
PROCNO   1

F2 - Acquisition Parameters
Date_    20040815
Time     17.58
INSTRUM  spect
PROBHD   5 mm BBI 1H-B
PULPROG  zg30
TD        65536
SOLVENT  CDCl3
NS        32
DS        2
SWH       8278.146 Hz
FIDRES    0.126314 Hz
AQ         3.9564243 sec
RG         287.4
DM         60.400 usec
DE         5.00 usec
TE         300.0 K
D1         1.00000000 sec

===== CHANNEL f1 =====
NUC1      1H
P1         5.45 usec
PL1        0.00 dB
SFO1      400.1324710 MHz

F2 - Processing parameters
SI         32768
SF         400.1300000 MHz
WDW        no
SSB         0
LB         3.00 Hz
GB         0
PC         1.00

1D NMR plot parameters
CX         23.00 cm
F1P        10.000 ppm
F1         4001.30 Hz
F2P        -1.000 ppm
F2         -400.13 Hz
PP4MCM     0.55000 ppm/cm
HZCM       220.07150 Hz/cm
    
```



```

Current Data Parameters
NAME      MRL-AUG15-04
EXPNO    2
PROCNO   1

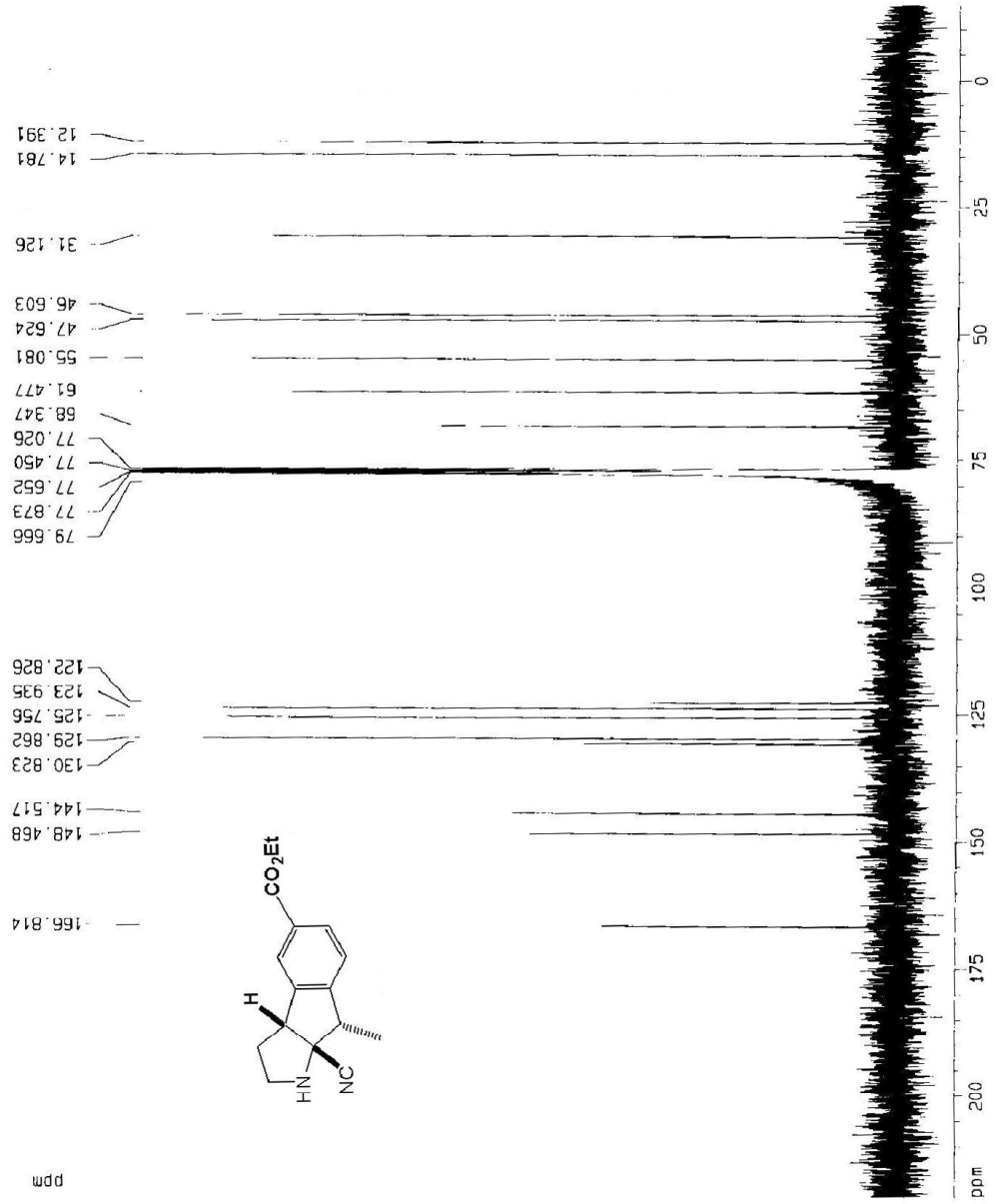
F2 - Acquisition Parameters
Date_    20040816
Time     7.58
INSTRUM  spect
PROBHD   5 mm QNP 1H/1
PULPROG  zgpg30
TD        65536
SOLVENT  CDCl3
NS        12855
DS        4
SWH+     18796.932 Hz
FIDRES   0.296819 Hz
AQ        1.7433075 sec
RG        4096
Dk        25.600 usec
DE        5.00 usec
TE        300.0 K
C1        2.0000000 sec
D11       0.3000000 sec
D12       0.0002000 sec

===== CHANNEL f1 =====
NUC1      13C
P1        5.40 usec
PL1       -5.00 dB
SFO1      75.4106357 MHz

===== CHANNEL f2 =====
CPDPRG2  waltz16
NUC2      1H
PCPD2    115.00 usec
P22      0.00 dB
PL12     20.00 dB
PL13     20.00 dB
SFO2     299.871195 MHz

F2 - Processing parameters
SI        32768
SF        75.4023410 MHz
NDM       0
SSB       0
GB        0
PC        1.40

1D NMR plot parameters
CX        20.00 cm
F1P      220.000 ppm
F1       16588.52 Hz
F2P     -20.000 ppm
F2      -1508.05 Hz
FREQM    12.00000 ppm/cm
-ZC#     904.82612 Hz/cm
    
```



```

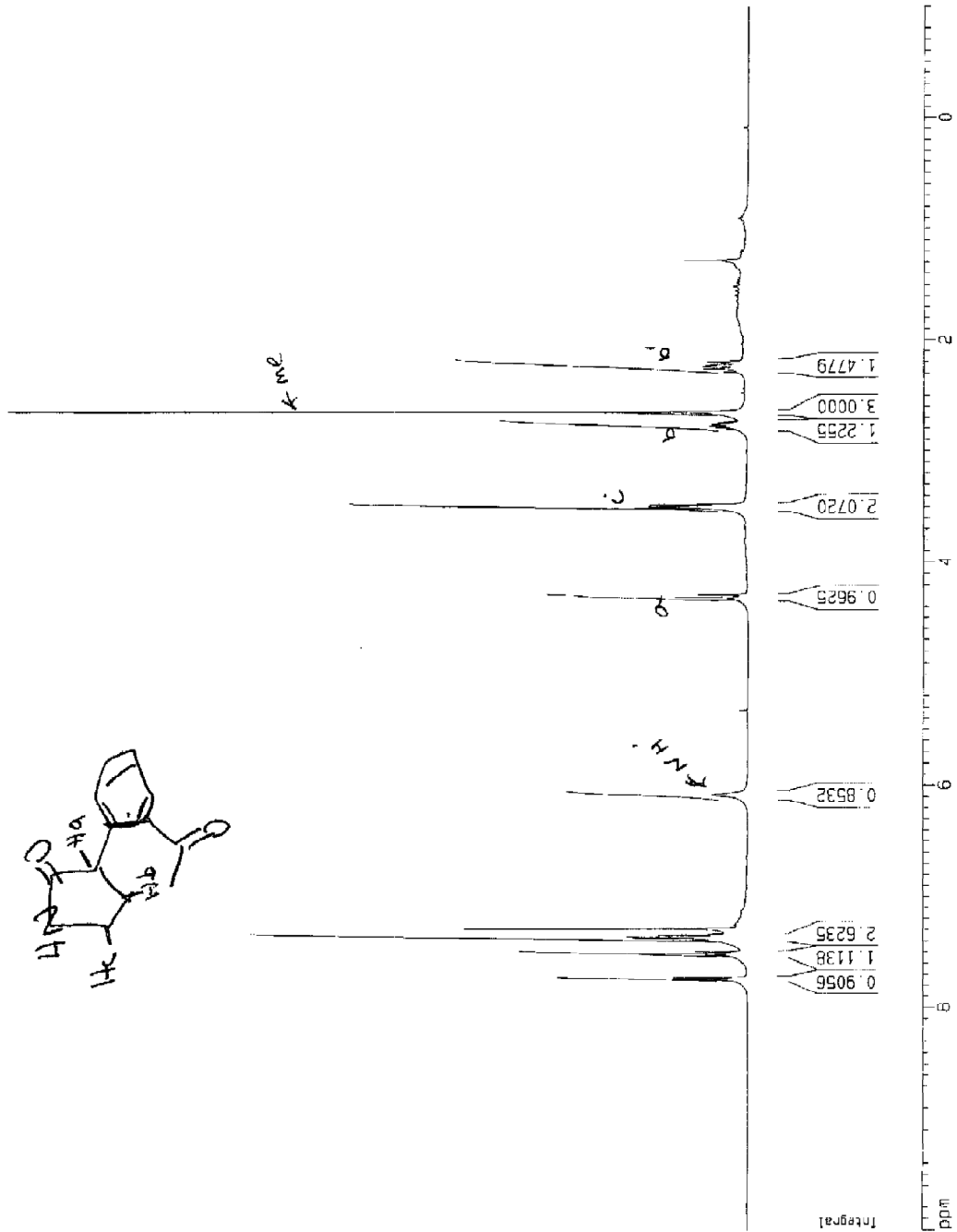
Current Data Parameters
NAME      MRI-Mar29-04
EXPNO    1
PROCNO   1

F2 - Acquisition Parameters
Date_    20040329
Time     14.05
INSTRUM  spect
PROBHD   5 mm BBI 1H-5
PULPROG  zg30
TD        65536
SOLVENT  CDCl3
NS        32
DS        2
SWH       8278.145 Hz
FIDRES   0.126312 Hz
AQ        3.9584243 sec
RG        257.4
BW        60.400 usec
DE        6.00 usec
TE        300.0 K
D1        1.00000000 sec

===== CHANNEL f1 =====
NUC1      1H
P1        6.45 usec
PL1       0.00 dB
SFO1      400.1324710 MHz

F2 - Processing parameters
SI        32768
SF        400.1300000 MHz
WDW       no
SSB       0
LB        0.00 Hz
GB        0
PC        1.00

1D NMR plot parameters
CX        20.00 cm
F1P       10.000 pfm
F1        4001.30 Hz
F2P       -1.000 pfm
F2        -400.13 Hz
PPMCH    0.95000 ppm/cm
HZCM     220.07150 Hz/cm
    
```



Current Data Parameters  
 NAME NRI-Mar29-04  
 EXPNO 3  
 PROCNO 1

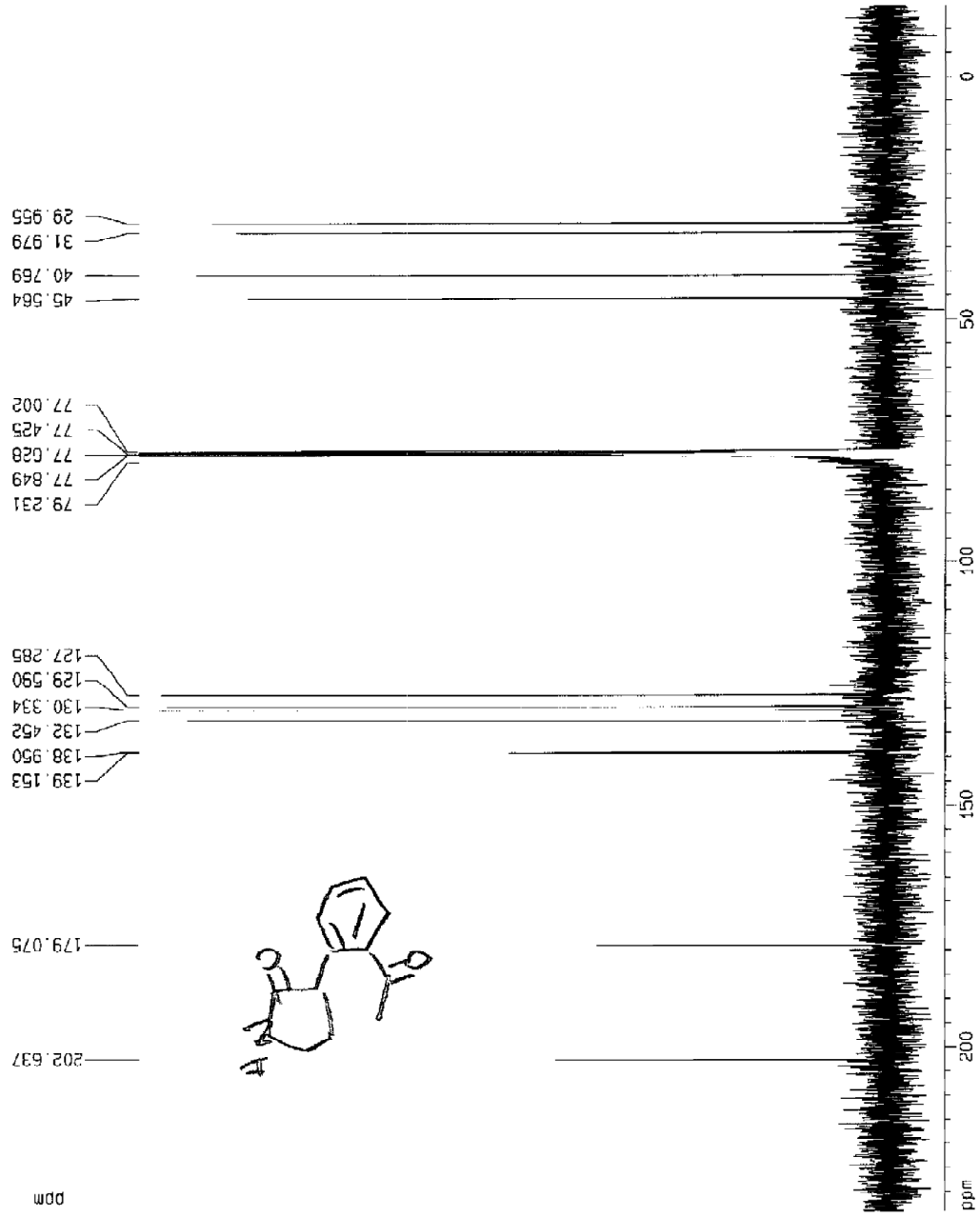
F2 - Acquisition Parameters  
 Date\_ 20040330  
 Time 7.53  
 INSTRUM spect  
 PROBHD 5 mm Multinu  
 PULPROG zgpg30  
 TD 65536  
 SOLVENT CDCl3  
 NS 12171  
 DS 4  
 SWH 16832.383 Hz  
 FIDRES 0.267360 Hz  
 AQ 1.7400398 sec  
 RG 16384  
 DW 26.550 usec  
 DE 6.00 usec  
 TE 300.0 K  
 D1 2.0000000 sec  
 d11 0.0300000 sec  
 d12 0.0002000 sec

===== CHANNEL f1 =====  
 NUC1 13C  
 P1 5.50 usec  
 PL1 -6.00 dB  
 SFO1 75.476200 MHz

===== CHANNEL f2 =====  
 CPOPRG2 waltz16  
 NUC2 1H  
 PCPD2 114.00 usec  
 PL2 -6.00 dB  
 PL12 18.00 dB  
 PL13 18.00 dB  
 SFO2 300.131205 MHz

F2 - Processing parameters  
 SI 32768  
 SF 75.4677190 MHz  
 WDM EN  
 SS3 0  
 LB 1.00 Hz  
 GB 0  
 PC 1.40

1D NMR plot parameters  
 CX 20.00 cm  
 F1P 234.060 ppm  
 F1 17659.45 Hz  
 F2P -20.060 ppm  
 F2 -1509.35 Hz  
 PPMCM 42.70000 ppm/cm  
 LC04 956.49594 Hz/cm



```

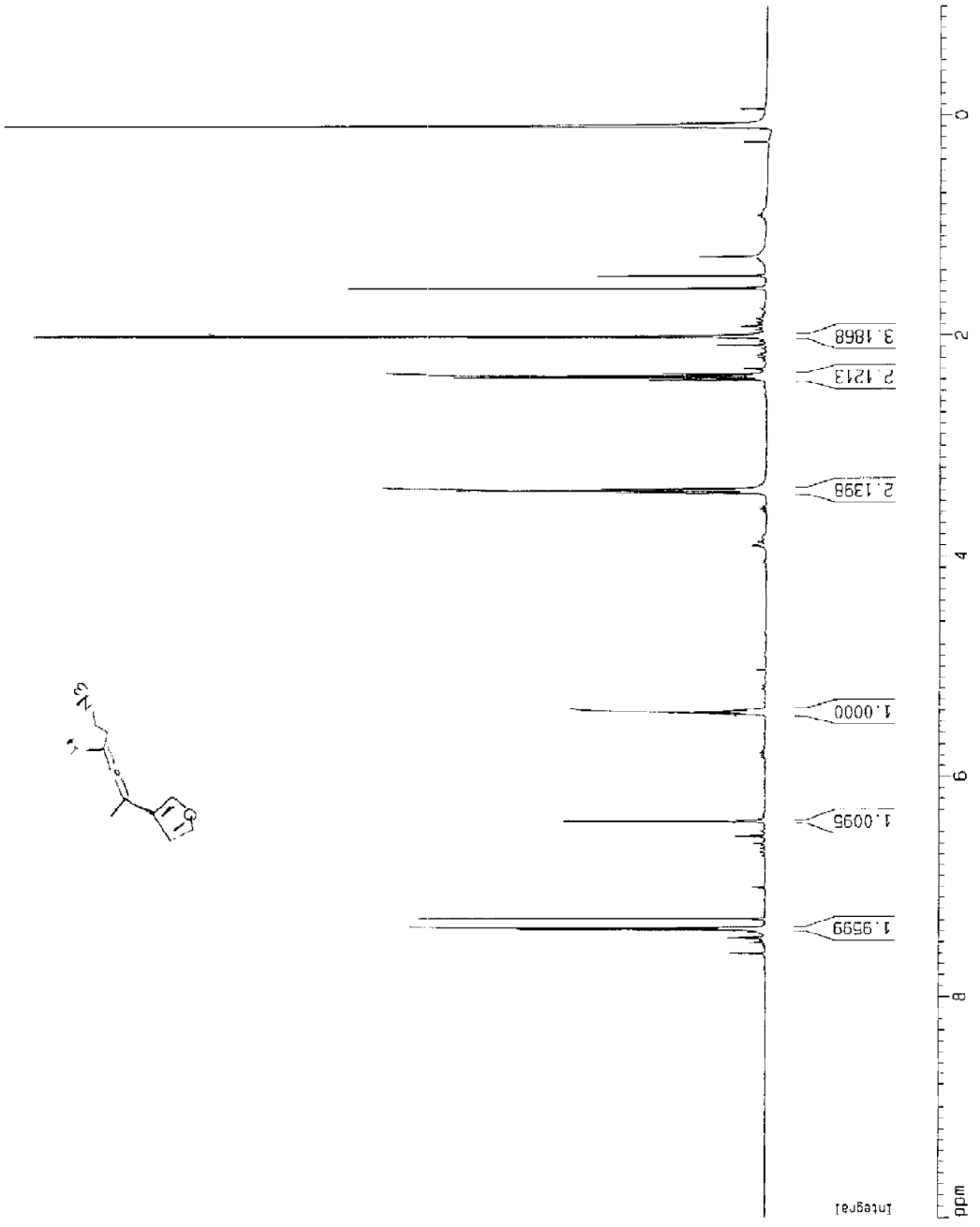
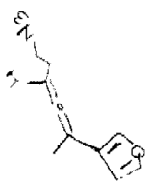
Current Data Parameters
NAME      MRI-Dec22-04
EXPNO    1
PROCNO   1

F2 - Acquisition Parameters
Date_    20041222
Time     9.49
INSTRUM  spect
PROBHD   5 mm BBI 1H-B
PULPROG  zg30
TD        65536
SOLVENT  CDCl3
NS        16
DS        2
SWH       8276.146 Hz
FIDRES    0.125314 Hz
AQ        3.956243 sec
RG        151.3
DM        60.400 usec
DE        6.00 usec
TE        300.0 K
D1        1.00000000 sec

===== CHANNEL f1 =====
NUC1      1H
P1        6.45 usec
PL1       0.00 dB
SFO1      400.1324710 MHz

F2 - Processing parameters
SI        32768
SF        400.1300000 MHz
WDW       r0
SSB       0
LB        0.00 Hz
GB        0
PC        1.00

1D NMR plot parameters
CX        20.00 cm
F1P       10.000 ppm
F2P       -1.000 ppm
F2        -400.13 Hz
PPMCH    0.55000 ppm/cm
HZOM     220.07150 Hz/cm
    
```



```

Current Data Parameters
NAME      MHT-11ec22-04
EXPNO    2
PROCNO   1

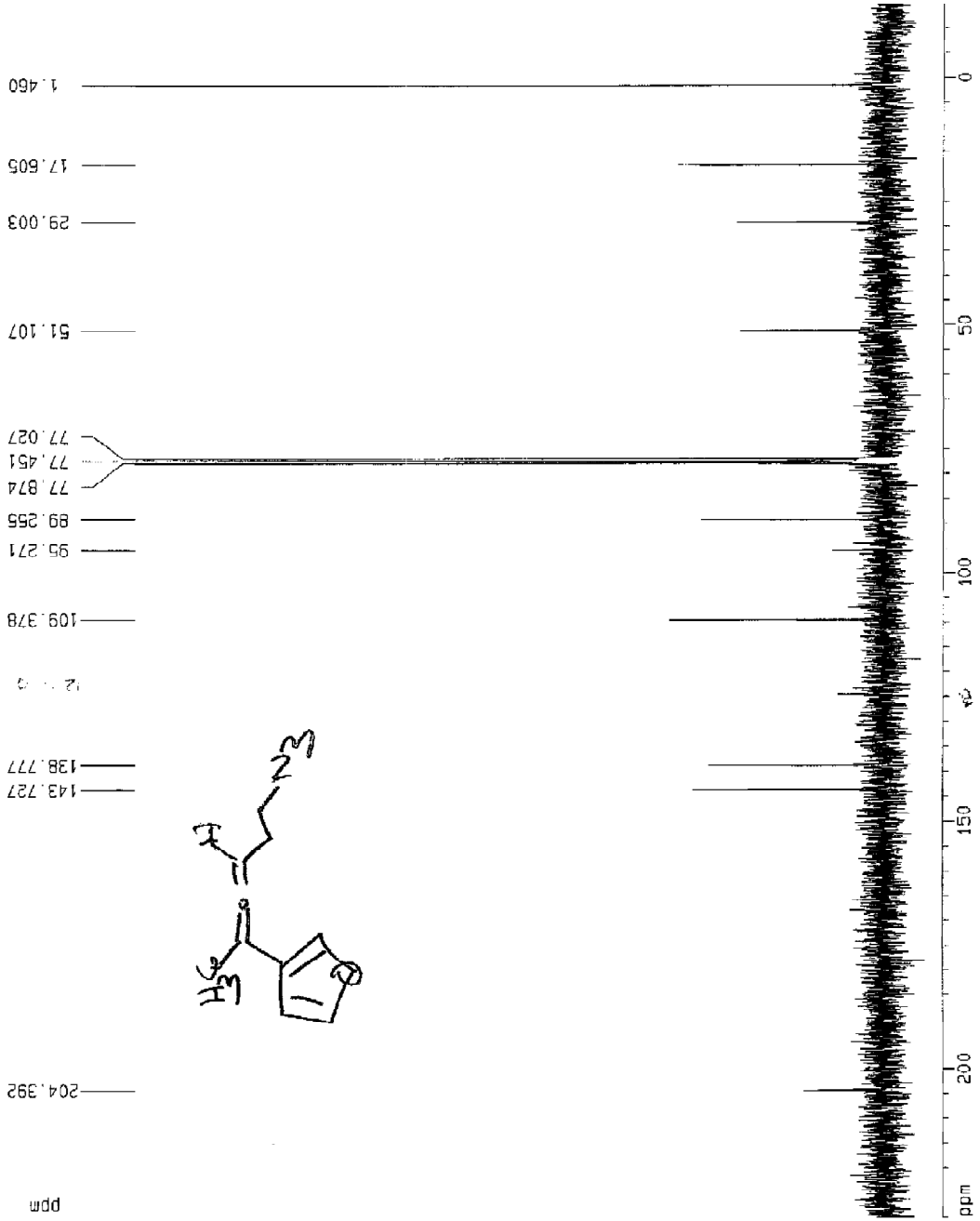
F2 - Acquisition Parameters
Date_    20041222
Time     9.21
INSTRUM  spect
PROBHD   5 mm QNP 1H/1
PULPROG  zgpg30
TD        65536
SOLVENT  CDCl3
NS        437
DS        4
SWH       18736.992 Hz
FIDRES    0.286819 Hz
AQ        1.7433076 sec
RG        545.1
DM        26.600 usec
DE        6.00 usec
TE        300.0 K
D1        2.00000000 sec
D:1:1    0.03000000 sec
D:2      0.00000000 sec

===== CHANNEL f1 =====
NUC1      13C
P1        5.40 usec
PL1       -5.00 dB
SFO1      75.4106357 MHz

===== CHANNEL f2 =====
CPOPRG2   wa1t2.16
NUC2      1H
P2        115.00 usec
PL2       0.00 dB
PL12      20.00 dB
PL13      20.00 dB
SFO2      299.8711955 MHz

F2 - Processing parameters
SI        32768
SF        75.4025410 MHz
RG        64
WDW        EM
SSB        0
LB        1.00 Hz
GB        0
PC        1.40

1D NMR plot parameters
CX        20.00 cm
FLP       230.000 ppa
F1        17342.54 Hz
F2        -20.000 ppa
F2:2      -1506.05 Hz
PRMCH     32.50000 ppa/cr
RZDN     542.52530 Hz/cr
    
```



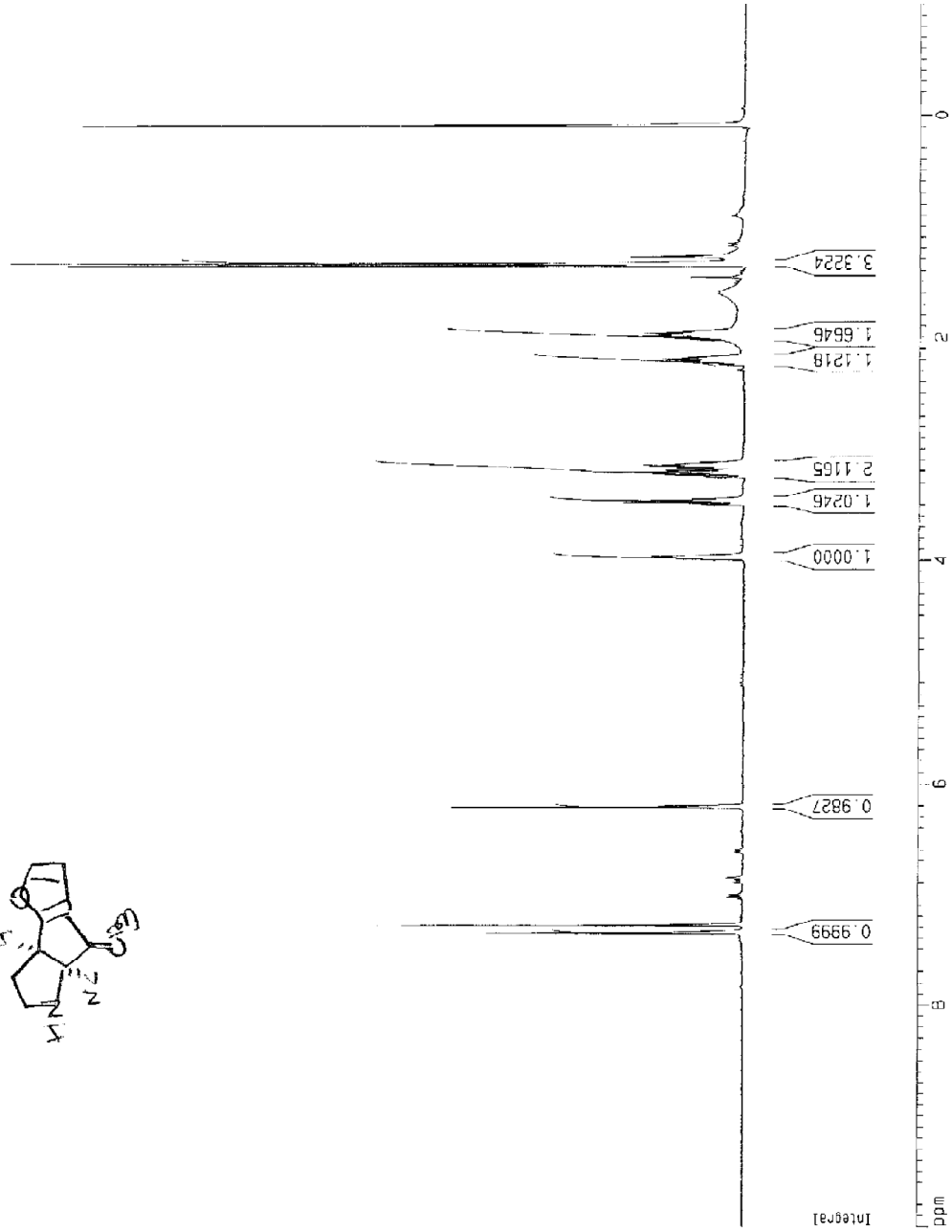
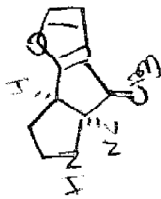
Current Data Parameters  
 NAME MRI-Dec30-04  
 EXPNO 2  
 PROCNO 1

F2 - Acquisition Parameters  
 Date\_ 20041230  
 Time\_ 10:30  
 INSTRUM spect  
 PROBHD 5 mm BBI 1H-9  
 PULPROG zg30  
 TD 65536  
 SOLVENT CDCl3  
 NS 16  
 DS 2  
 SWH 8278.145 Hz  
 FIDRES 0.126314 Hz  
 AQ 3.9584243 sec  
 RG 322.5  
 DW 60.400 usec  
 DE 5.00 usec  
 TE 300.0 K  
 D1 1.0000000 sec

\*\*\*\*\* CHANNEL f1 \*\*\*\*\*  
 NUC1 H  
 P1 6.45 usec  
 PL1 0.00 dB  
 SF01 400.1324710 MHz

F2 - Processing parameters  
 SI 32768  
 SF 400.1300000 MHz  
 WDM 16  
 SSB 0  
 LB 0.00 Hz  
 GB 0  
 PC 1.00

1D NMR plot parameters  
 CX 20.00 cr  
 F1P 10.000 ppm  
 F1 4001.30 Hz  
 F2P -1.000 ppm  
 F2 -400.13 Hz  
 PRMCM 0.95000 ppm/cm  
 HZCM 220.07150 Hz/cm





```

Current Data Parameters
NAME      MRI-Dec28-04
EXPNO    1
PROCNO   1

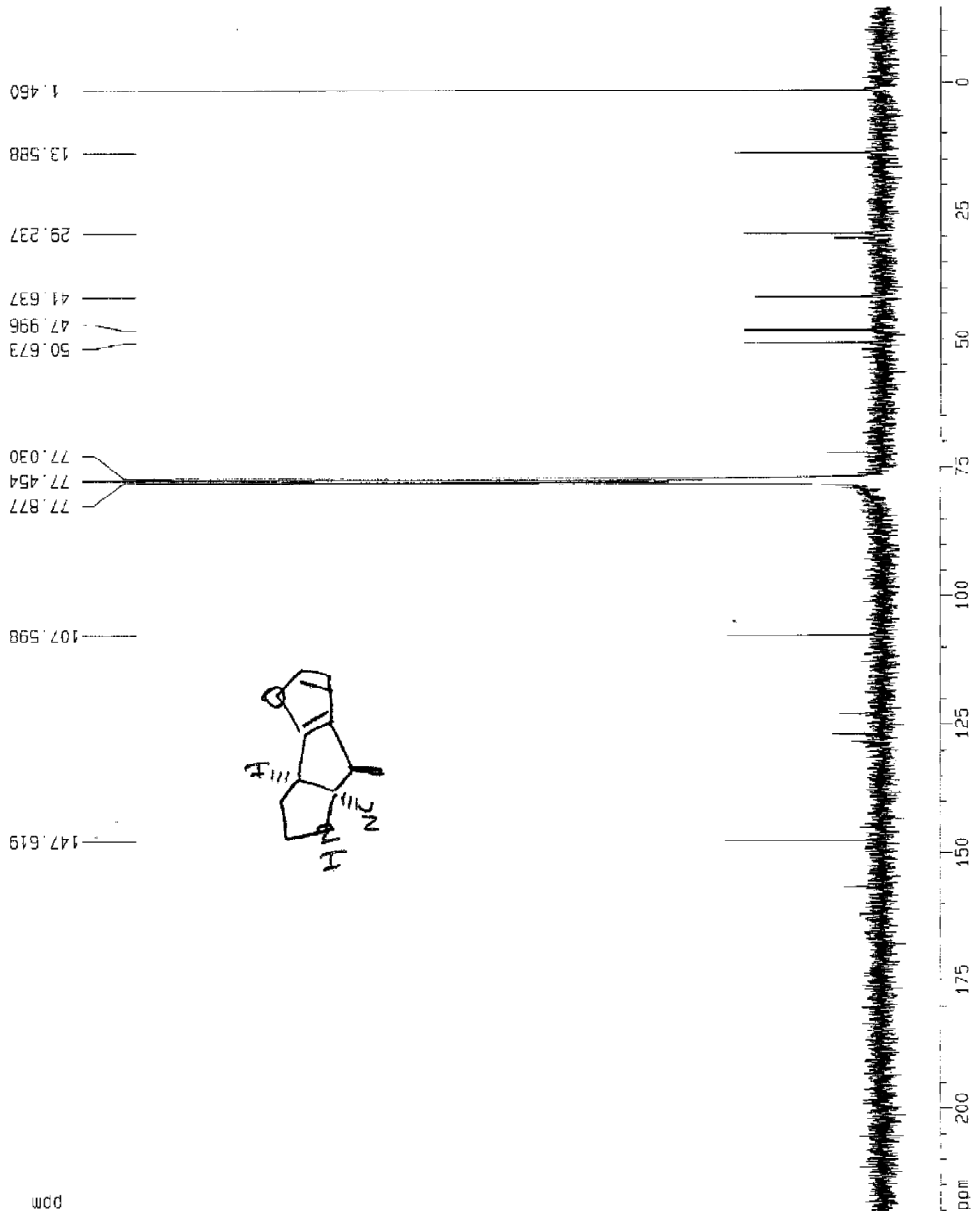
F2 - Acquisition Parameters
Date_    20041223
Time     8.18
INSTRUM  spect
PROBHD   5 mm QNP 1H/1
PULPROG  zgpg30
TD       65536
SOLVENT  DMS
NS       13500
DS       4
SMH      13735.932 Hz
FIDRES   0.256813 Hz
AQ       1.7433075 sec
RG        1024
SM       26.600 usec
SFO      60.00 usec
TE       300.2 K
D1       2.0000000 sec
D11      0.0300000 sec
D12      0.0000000 sec

===== CHANNEL f1 =====
NUC1     13C
P1       5.40 usec
PL1     -6.00 dB
SFO1     75.4106357 MHz

===== CHANNEL f2 =====
CPDPRG2  waltz15
NUC2     1H
PCPD2    115.00 usec
PL2      0.00 dB
PL12     20.00 dB
PL13     20.00 dB
SFO2     299.871995 MHz

F2 - Processing parameters
SI       32766
SF       4023410 MHz
WDW      EM
SSB      0
LB       1.00 Hz
GB       0
PC       1.40

1D NMR plot parameters
GX       20.00 cm
F1P      226.000 ppm
F1       16588.52 Hz
F2P      -26.000 ppm
F2       -1588.05 Hz
PPHOCM   12.00000 ppm/cm
RZDM     90.482612 Hz/cm
    
```

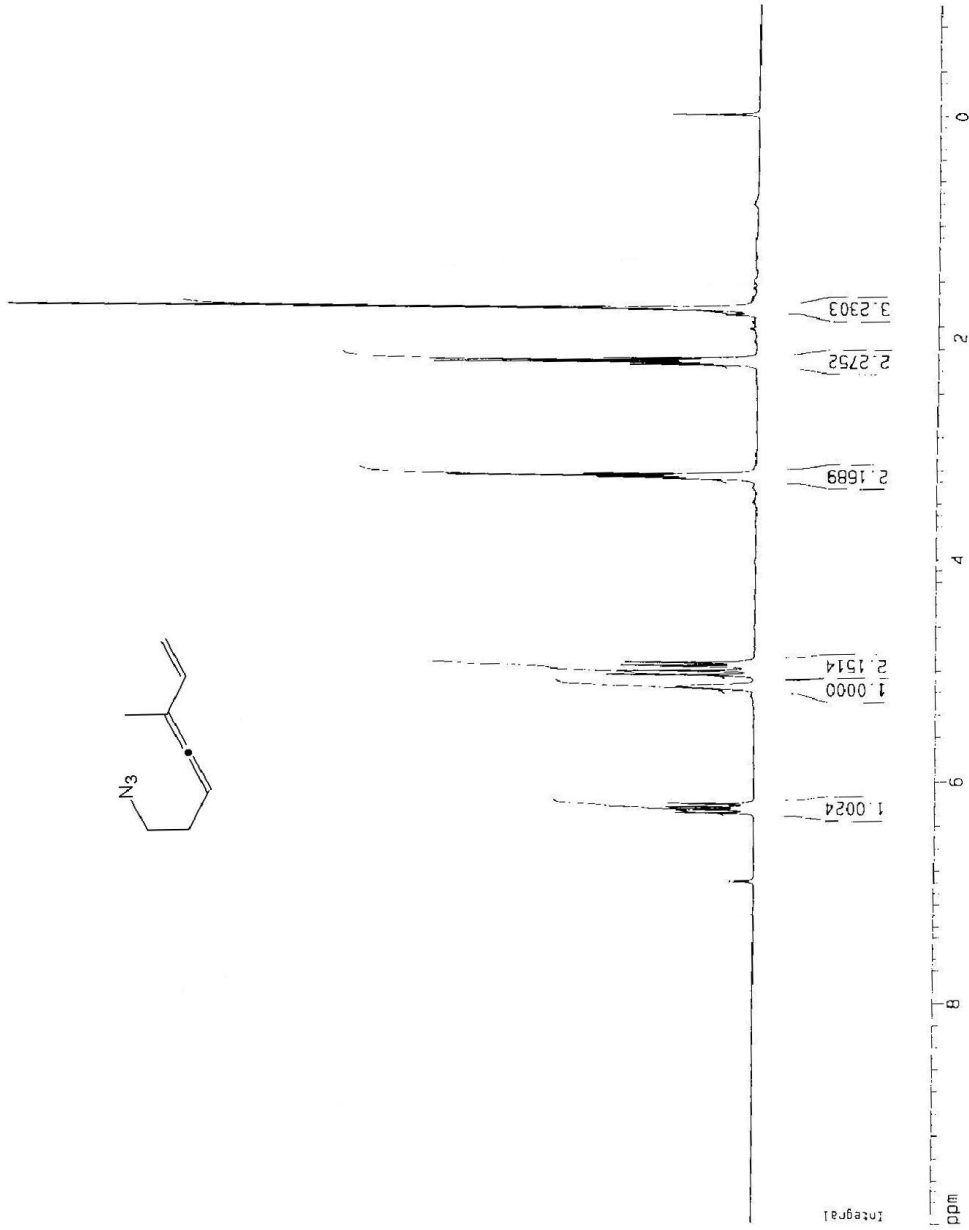
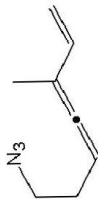


Current Data Parameters  
 NAME MFL-ALIG09-04  
 EXPNO 1  
 PROCNO 1

F2 - Acquisition Parameters  
 Date\_ 20040809  
 Time 9.28  
 INSTRUM spect  
 PROBHD 5 mm QNP 1H  
 PULPROG zg30  
 TD 65536  
 SOLVENT CDCl3  
 NS 16  
 DS 2  
 SWH 7462.667 Hz  
 FIDRES 0.113672 Hz  
 AQ 4.3909621 sec  
 RG 256  
 DW 67.000 usec  
 DE 95.71 usec  
 TE 300.0 K  
 HL1 0 dB  
 D1 1.0000000 sec  
 P1 12.00 usec  
 SFO1 360.1361620 MHz  
 NUCLEUS 1H

F2 - Processing parameters  
 SI 32768  
 SF 360.1340098 MHz  
 NQW no  
 SSB 0  
 LB 0.00 Hz  
 GB 0  
 PC 1.00

1D NMR plot parameters  
 CK 20.00 cm  
 F1 10.000 ppm  
 F2 3601.34 Hz  
 F3 -1.000 ppm  
 F4 -360.13 Hz  
 PCMC 0.55000 ppm/cm  
 HZCM 198.07370 Hz/cm

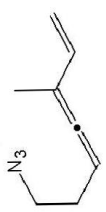
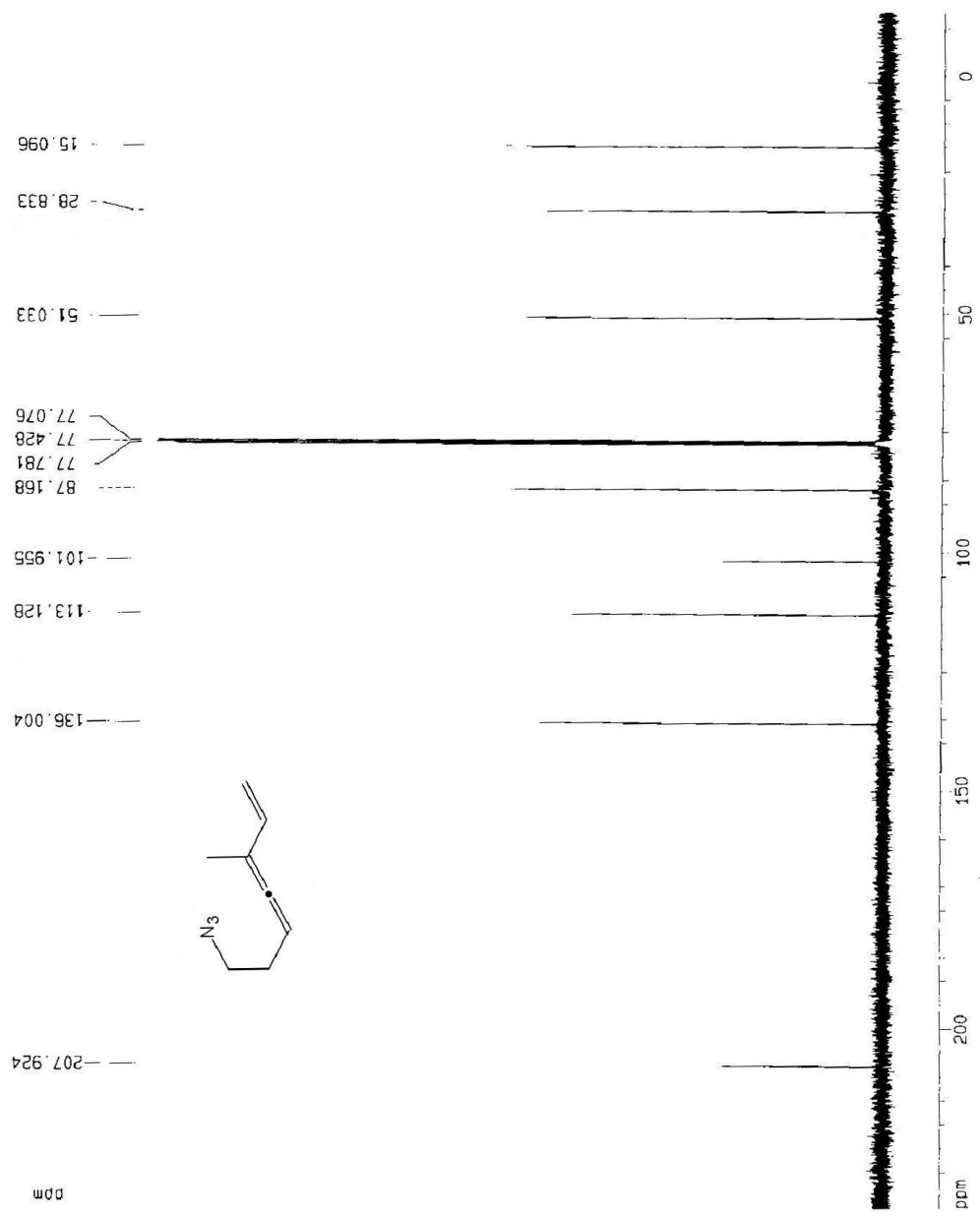


Current Data Parameters  
 NAME MRI-Aug9-04  
 EXPNO 2  
 PROCNO 1

F2 - Acquisition Parameters  
 Date\_ 20040809  
 Time 9.43  
 INSTRUM spect  
 PROBHD 5 mm GNP 1H  
 PULPROG zgpg30  
 TD 65536  
 SOLVENT CDCl3  
 NS 204  
 DS 4  
 SWH 22727.273 Hz  
 FIDRES 0.346791 Hz  
 AQ 1.4418420 sec  
 RG 32768  
 DW 22.000 usec  
 DE 31.43 usec  
 TE 300.0 K  
 HL1 0 dB  
 D1 2.00000000 sec  
 CPDPRG walz16  
 P31 106.00 usec  
 S4 30 dB  
 D11 0.03000000 sec  
 S2 30 dB  
 F1 7.90 usec  
 SFO1 90.5658969 MHz  
 NUCLEUS 13C

F2 - Processing parameters  
 SI 32768  
 SF 90.5557236 MHz  
 MDW EW  
 SSB 0  
 LB 1.00 Hz  
 GB 0  
 PC 1.40

1D NMR plot parameters  
 CX 20.00 cm  
 F1P 237.816 ppm  
 F1 21595.63 Hz  
 F2P -13.159 ppm  
 F2 -1191.54 Hz  
 ppmCM 12.54878 ppm/cm  
 -ZCM 1136.36365 Hz/cm

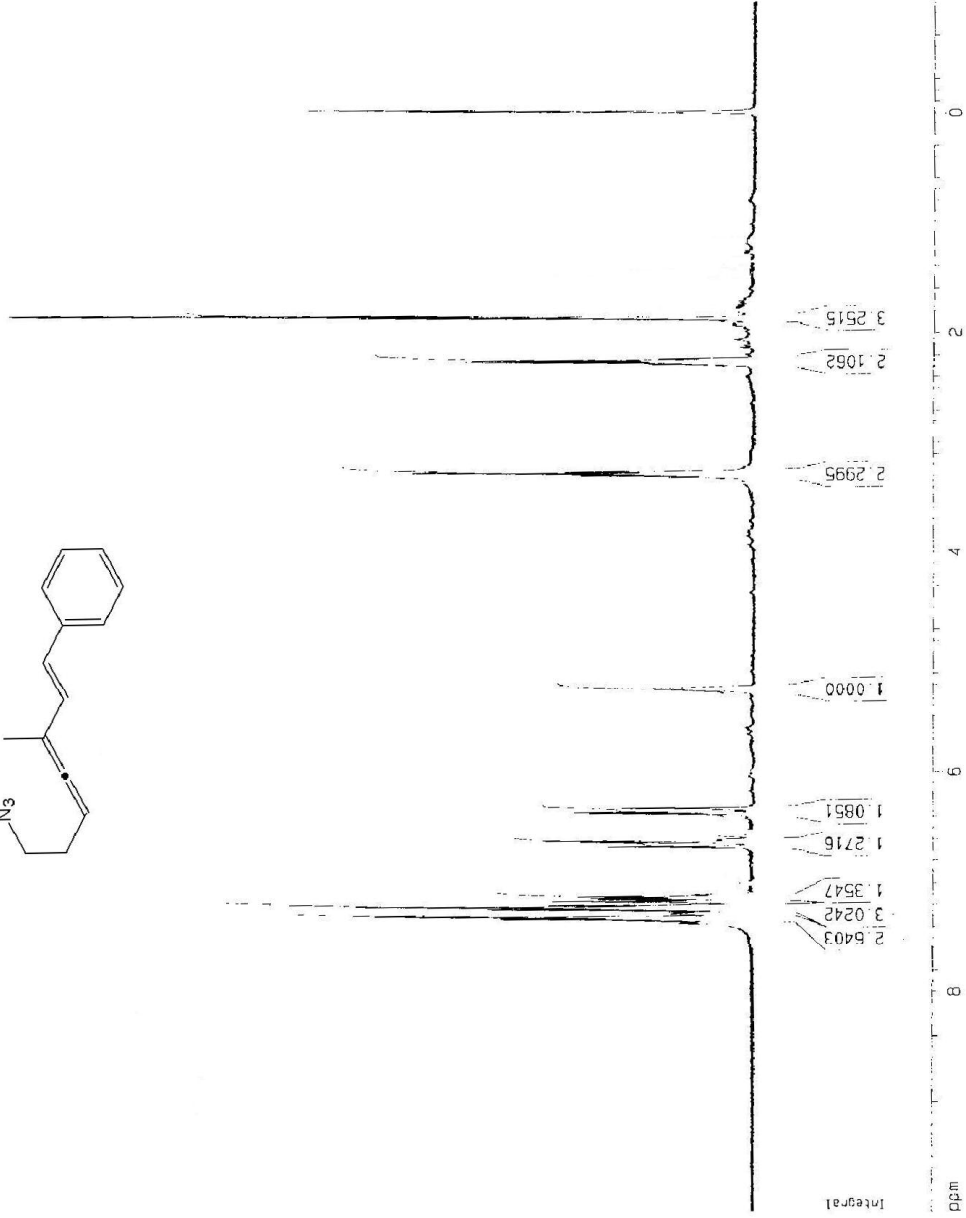
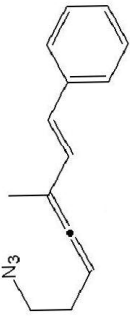


Current Data Parameters  
 NAME: wj1-Dect10-C4  
 EXPNO: 2  
 PROCNO: 1

F2 - Acquisition Parameters  
 Date\_: 20041210  
 Time: 16:44  
 INSTRUM: spect  
 PROBHD: 5 mm GNP 1H  
 PULPROG: zg30  
 TO: 655.36  
 SOLVENT: CDCl3  
 NS: 16  
 DS: 2  
 SWH: 7462.657 Hz  
 FIDRES: 0.113672 Hz  
 AQ: 4.3309621 sec  
 RG: 512  
 DW: 67.000 usec  
 DE: 95.71 usec  
 TE: 300.0 K  
 T1: 0.35  
 T2: 1.0600000 sec  
 SFO1: 42.00 usec  
 SFO2: 360.1361620 MHz  
 NUC1: 1H

F2 - Processing parameters  
 SI: 32768  
 SF: 360.1340131 MHz  
 MDW: no  
 SSB: 0  
 LB: 0.00 Hz  
 GB: 0  
 PC: 1.00

1D NMR pict parameters  
 CX: 20.00 ct  
 ZF: 10.000 dB  
 F1: 3601.34 Hz  
 F2: -1.000 ppm  
 PPMCM: 0.55000 ppm/cm  
 WDCM: 198.07370 Hz/cm

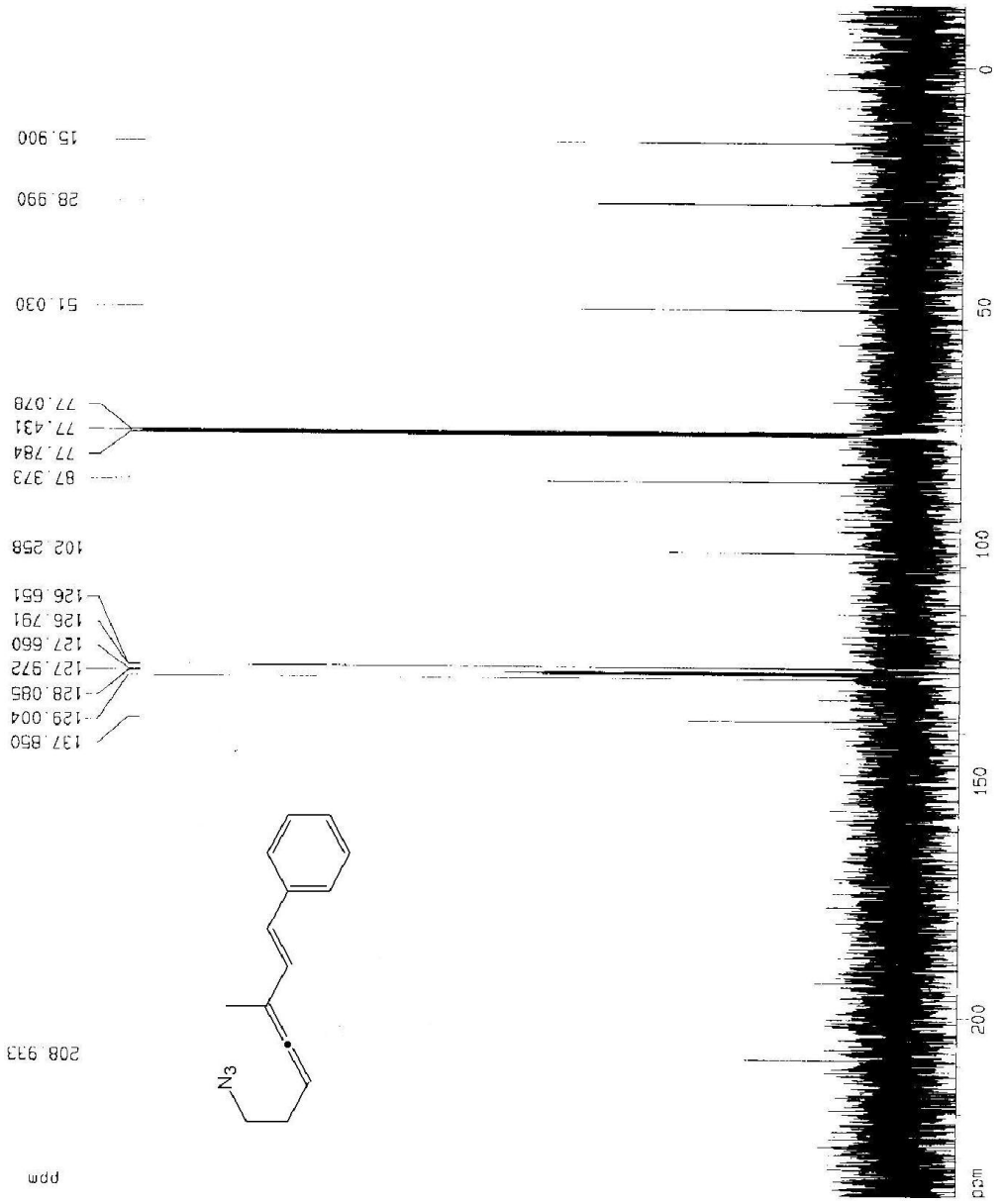


Current Data Parameters  
 NAME MRI-DEC10-04  
 EXPNO 3  
 PROCNO 1

F2 - Acquisition Parameters  
 Date\_ 2004-21-0  
 Time 16:54  
 INSTRUM spect  
 PROBHD 5 mm QNP 1H  
 PULPROG zgpg30  
 TD 65536  
 SOLVENT CDCl3  
 NS 89  
 DS 4  
 SWH 22727.273 Hz  
 FIDRES 0.346791 Hz  
 AQ 1.4418420 sec  
 RG 32768  
 DW 22.000 usec  
 DE 31.43 usec  
 TE 300.2 K  
 -LL1 0 dB  
 D1 0.0000000 sec  
 CPDPRG walitz16  
 P3: 105.00 usec  
 S4 30 dB  
 D11: 0.03000000 sec  
 S2 30 dB  
 P1 7.90 usec  
 SF01 90.5659869 MHz  
 NUCLEUS 13C

F2 - Processing Parameters  
 SI 32768  
 SF 90.5657235 MHz  
 MDW EM  
 SSB 0  
 LB 1.00 Hz  
 GB 0  
 PC 1.40

1D NMR plot parameters  
 CX 20.00 cm  
 F1P 237.816 ppm  
 F1 21535.63 Hz  
 F2P -20.000 ppm  
 F2 -1813.11 Hz  
 PPMCM 12.85081 ppm/Cr  
 FZCM 1157.33704 -v/cm



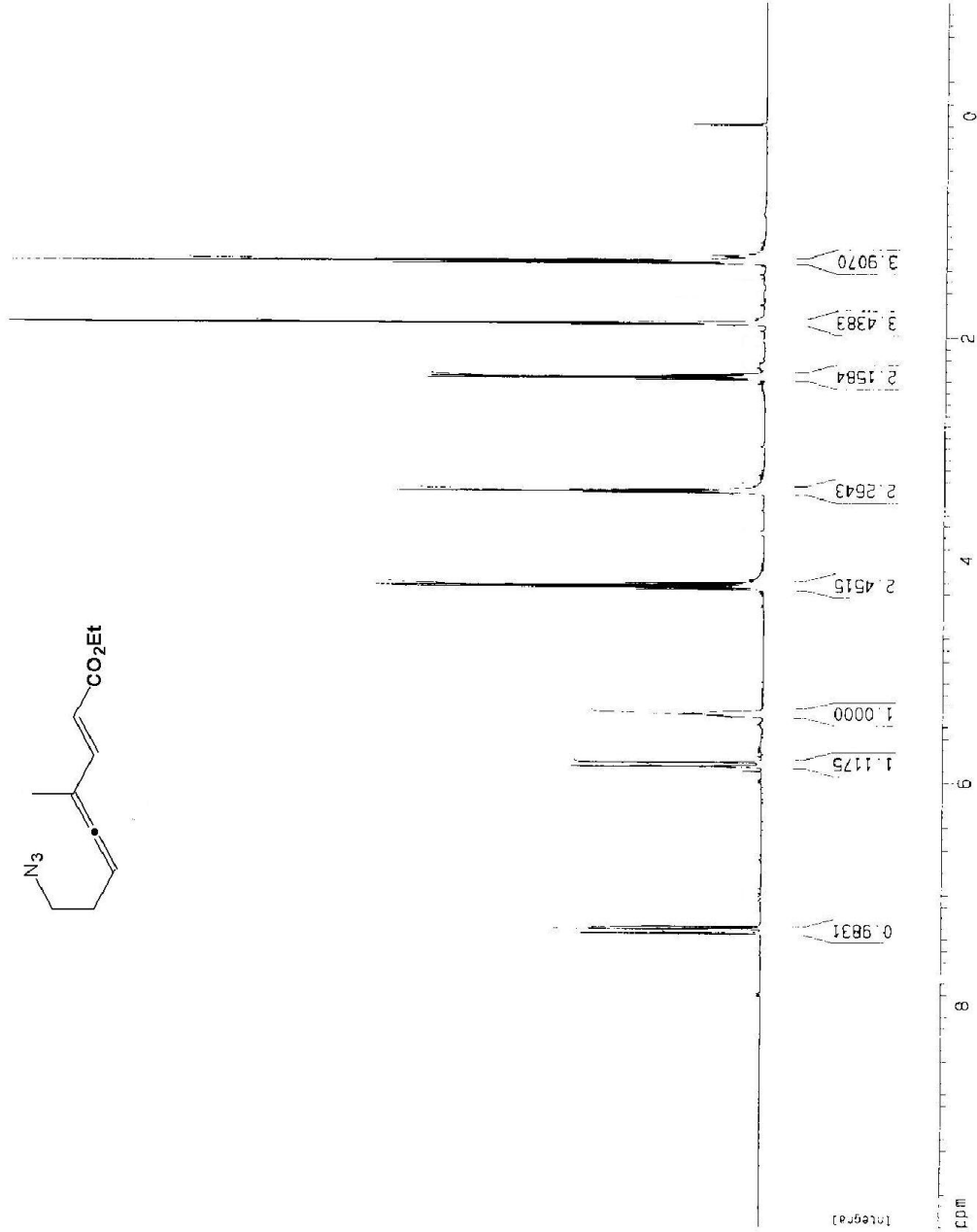
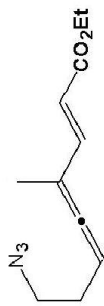
30c

Current Data Parameters  
NAME MR1-Dec04-04  
EXPNO 1  
PROCNO 1

F2 - Acquisition Parameters  
Date\_ 20041204  
Time 10.45  
INSTRUM spect  
PROBHD 5 mm BBI BH-9  
PULPROG zg30  
TD 65536  
SC\_VFNT COC13  
NS 15  
DS 2  
SWH 8278.145 Hz  
FIDRES 0.126314 Hz  
AQ 3.9584243 sec  
RG 151.3  
DM 50.400 usec  
DE 5.00 usec  
TE 300.0 K  
D1 1.00000000 sec

===== CHANNEL f1 =====  
NUC1 1H  
P1 6.45 usec  
PL1 0.00 dB  
SFO1 400.1324710 MHz

F2 - Processing parameters  
SI 32768  
SF 400.1300000 MHz  
WDW ro  
SSB 0  
LB 0.00 Hz  
GB 0  
PC 1.00  
ID NMR plot parameters  
CX 20.00 cm  
FIP 10.000 ppm  
F1 4001.30 Hz  
F2 1.000 ppm  
F3 -400.13 Hz  
DPMCM 0.55000 ppm/cm  
HZCM 220.07150 Hz/cm

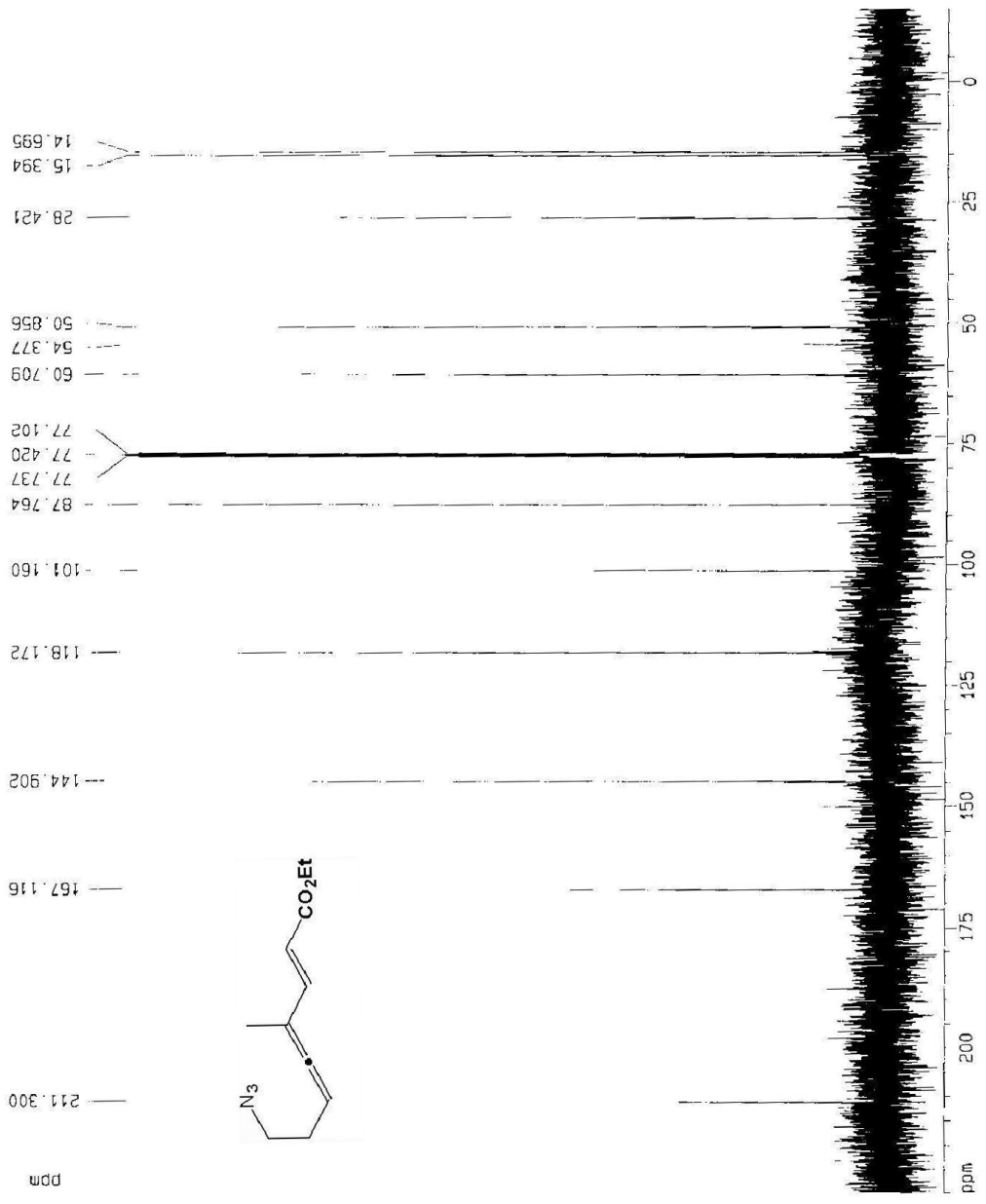


30c

Current Data Parameters  
NAME MRI-Dec04-04  
EXPNO 2  
PROCNO 1

2: - Acquisition Parameters  
Date\_ 20041204  
Time 11:47  
INSTRUM SPECT  
PROBHD 5 mm BBI 1H-1B  
PULPROG zgpg30  
TD 65536  
SOLVENT CDCl3  
NS 994  
DS 4  
SWH 25125.629 Hz  
FIDRES 0.393387 Hz  
AQ 1.3042164 sec  
RG 8192  
DM 19.900 usec  
DE 6.00 usec  
TE 300.0 K  
D1 2.0000000 sec  
d11 0.0300000 sec  
d12 0.0002000 sec

\*\*\*\*\* CHANNEL f1 \*\*\*\*\*  
NUC1 13C  
P1 16.95 usec  
PL1 -6.00 dB  
SFO1 100.6237959 MHz  
  
\*\*\*\*\* CHANNEL f2 \*\*\*\*\*  
P2PRG2 waltz16  
NUC2 1H  
PCPD2 114.00 usec  
PL2 0.00 dB  
PL12 24.00 dB  
PL13 24.00 dB  
SFO2 400.1316005 MHz  
  
F2 - Processing parameters  
SI 32768  
SF 100.6127290 MHz  
WDW EM  
SSB 0  
LB 1.00 Hz  
GB 0  
PC 1.40  
  
F0 NMR plot parameters  
CX 20.00 cm  
F1F 230.000 ppm  
F1 23140.93 Hz  
F2F -20.000 ppm  
F2 -2012.25 Hz  
PPMCM 12.50000 ppm/cm  
HZCM 1257.65506 Hz/cm



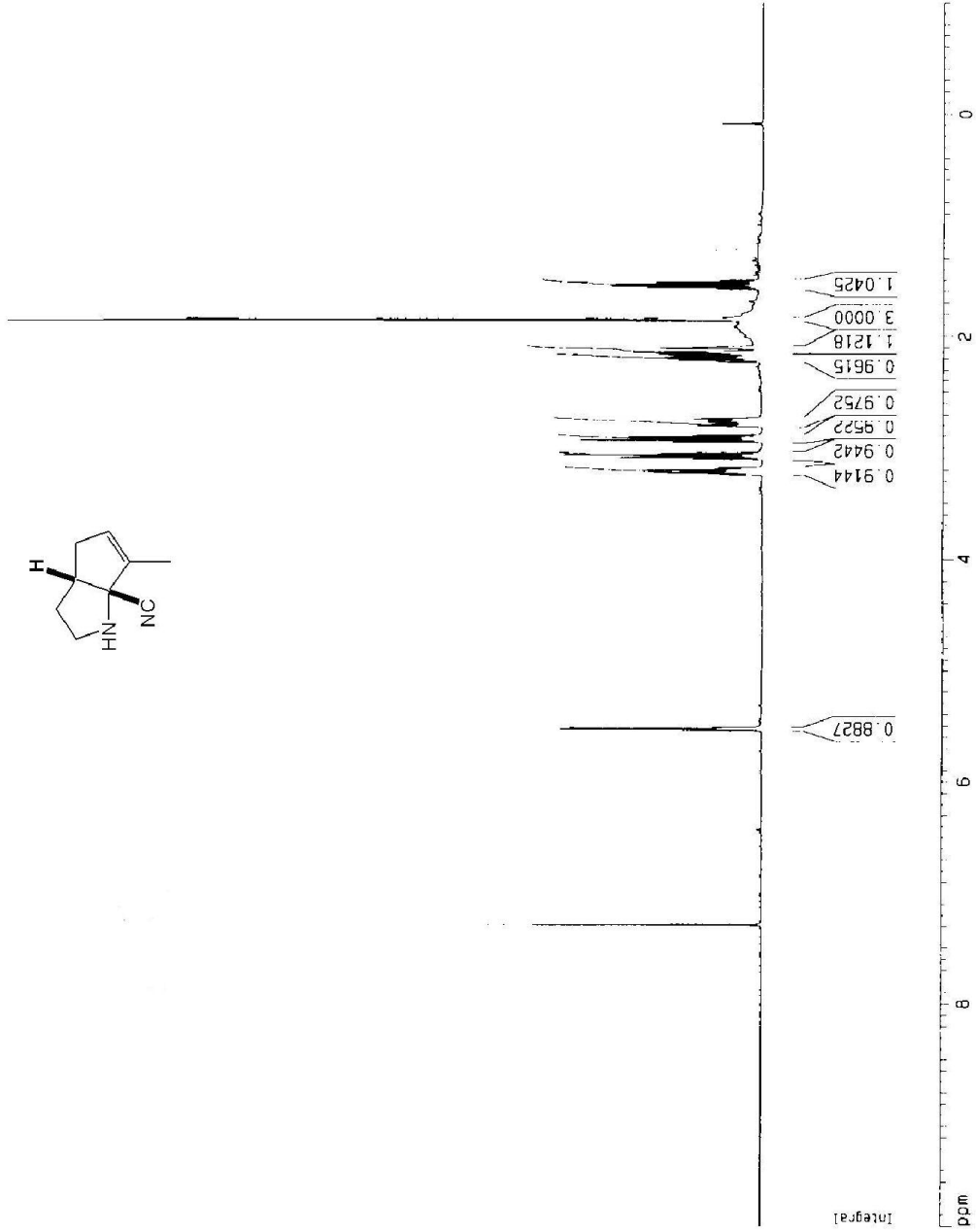
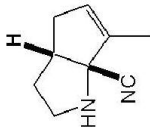
Current Data Parameters  
 NAME MRI-Aug10-D4  
 EXPNO 2  
 PROCNO 15

F2 - Acquisition Parameters  
 Date\_ 20040810  
 Time\_ 18.21  
 INSTRUM spect  
 PROBHD 5 mm BBI 1H-B  
 PULPROG zg30  
 TO 65536  
 SOLVENT CDCl3  
 VS 16  
 DS 2  
 SWH 8278.145 Hz  
 FIDRES 0.126314 Hz  
 AQ 3.9584243 sec  
 RG 161  
 DM 60.400 usec  
 DE 6.00 usec  
 TE 300.0 K  
 D1 1.0000000 sec

\*\*\*\*\* CHANNEL f1 \*\*\*\*\*  
 NUC1 1H  
 P1 6.45 usec  
 PL1 0.00 dB  
 SF01 400.1324710 MHz

F2 - Processing parameters  
 SI 32768  
 SF 400.1300000 MHz  
 MDW na  
 SSB 0  
 LB 0.00 Hz  
 GB 0  
 PC 1.00

1D NMR plot parameters  
 CX 20.00 cm  
 F1P 10.000 ppm  
 F1 4001.30 Hz  
 F2P -1.000 ppm  
 F2 -400.13 Hz  
 PPMCM 0.55000 ppm/cm  
 HZCM 220.07150 Hz/cm





Current Data Parameters  
 NAME MFI-Aug10-04  
 EXPNO 3  
 PROCNO 15

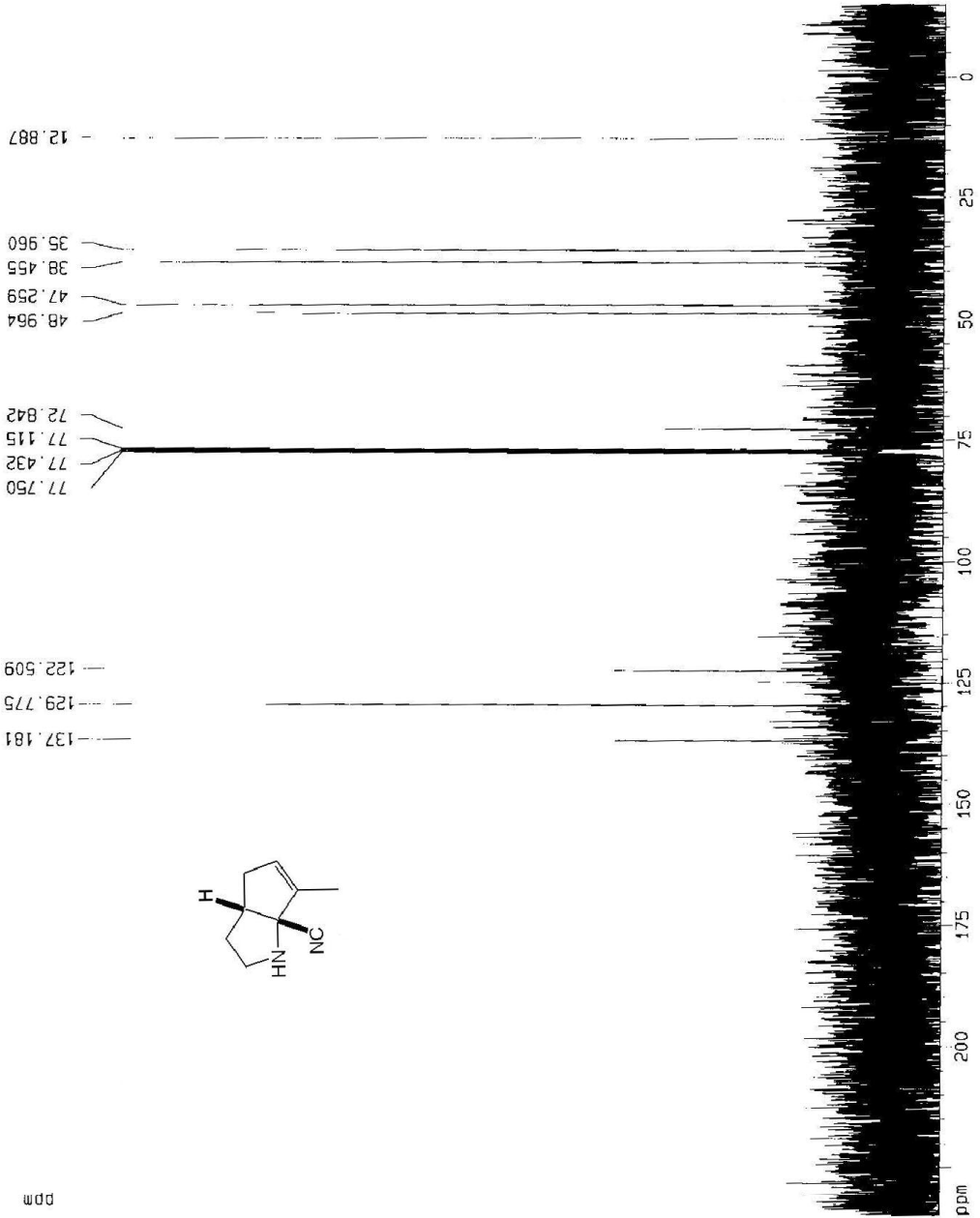
F2 - Acquisition Parameters  
 Date\_ 20040810  
 Time 18:44  
 INSTRUM spect  
 PROBHD 5 mm BBI 1H-B  
 PULPROG zgpg30  
 TO 55536  
 SOLVENT CDC13  
 NS 319  
 DS 4  
 SWH 25125.629 Hz  
 FIDRES 0.383387 Hz  
 AQ 1.3042164 sec  
 RG 16384  
 CW 19.900 usec  
 DE 6.00 usec  
 TE 300.0 K  
 O1 2.0000000 sec  
 O11 0.0300000 sec  
 O12 0.0000200 sec

\*\*\*\*\* CHANNEL f1 \*\*\*\*\*  
 NUC1 13C  
 P1 16.35 usec  
 PL1 -6.00 dB  
 SF01 100.6237959 MHz

\*\*\*\*\* CHANNEL f2 \*\*\*\*\*  
 CPDPRG2 waltz16  
 NUC2 1H  
 PCPD2 114.00 usec  
 PL2 0.00 dB  
 PL12 24.00 dB  
 PL13 24.00 dB  
 SF02 400.1316005 MHz

F2 - Processing parameters  
 S1 32768  
 SF 100.6127290 MHz  
 WDW EM  
 SSB 0  
 LB 1.00 Hz  
 GB 0  
 PC 1.40

10 NMR plot parameters  
 CX 20.00 cm  
 F1P 234.858 ppm  
 F1 23629.72 Hz  
 F2P -14.868 ppm  
 F2 -1495.90 Hz  
 PPMCM 12.48631 ppm/cm  
 HZCM 1256.28137 Hz/cm



ppm

Current Data Parameters  
 NAME vnl-Nov27-04  
 EXPNO 2  
 PROCNO 1

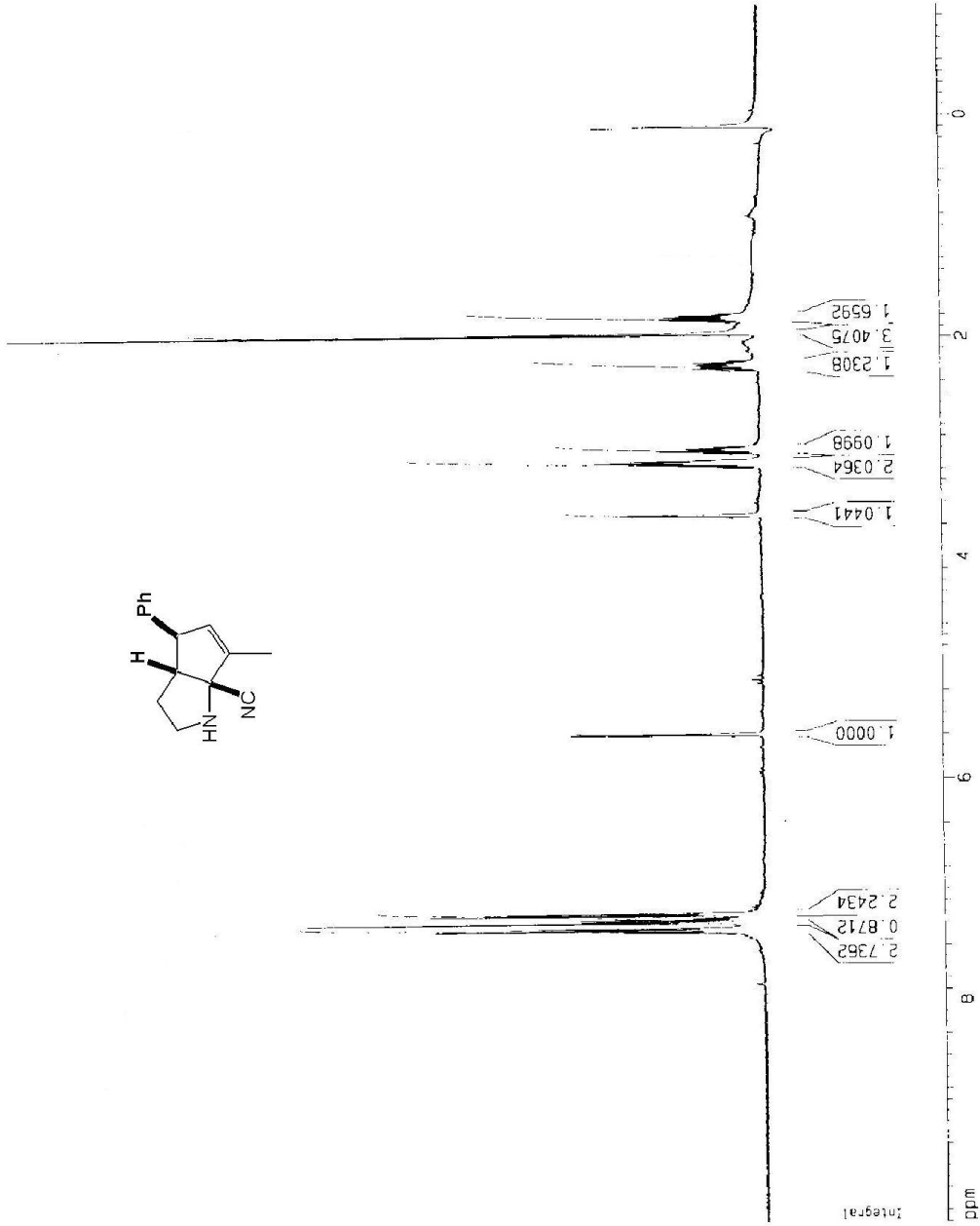
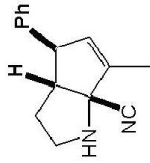
F2 - Acquisition Parameters  
 Date\_ 20041127  
 Time 15.26  
 INSTRUM spect  
 PROBHD 5 mm BBI 4+-B  
 PULPROG zg30  
 TO 65536  
 SOLVENT CDCl3  
 NS 16  
 DS 2  
 SWH 8276.146 Hz  
 FIDRES 0.126314 Hz  
 AQ 3.956243 sec  
 RG 724.1  
 DK 60.400 usec  
 DE 6.00 usec  
 TE 300.0 K  
 D1 1.0000000 sec

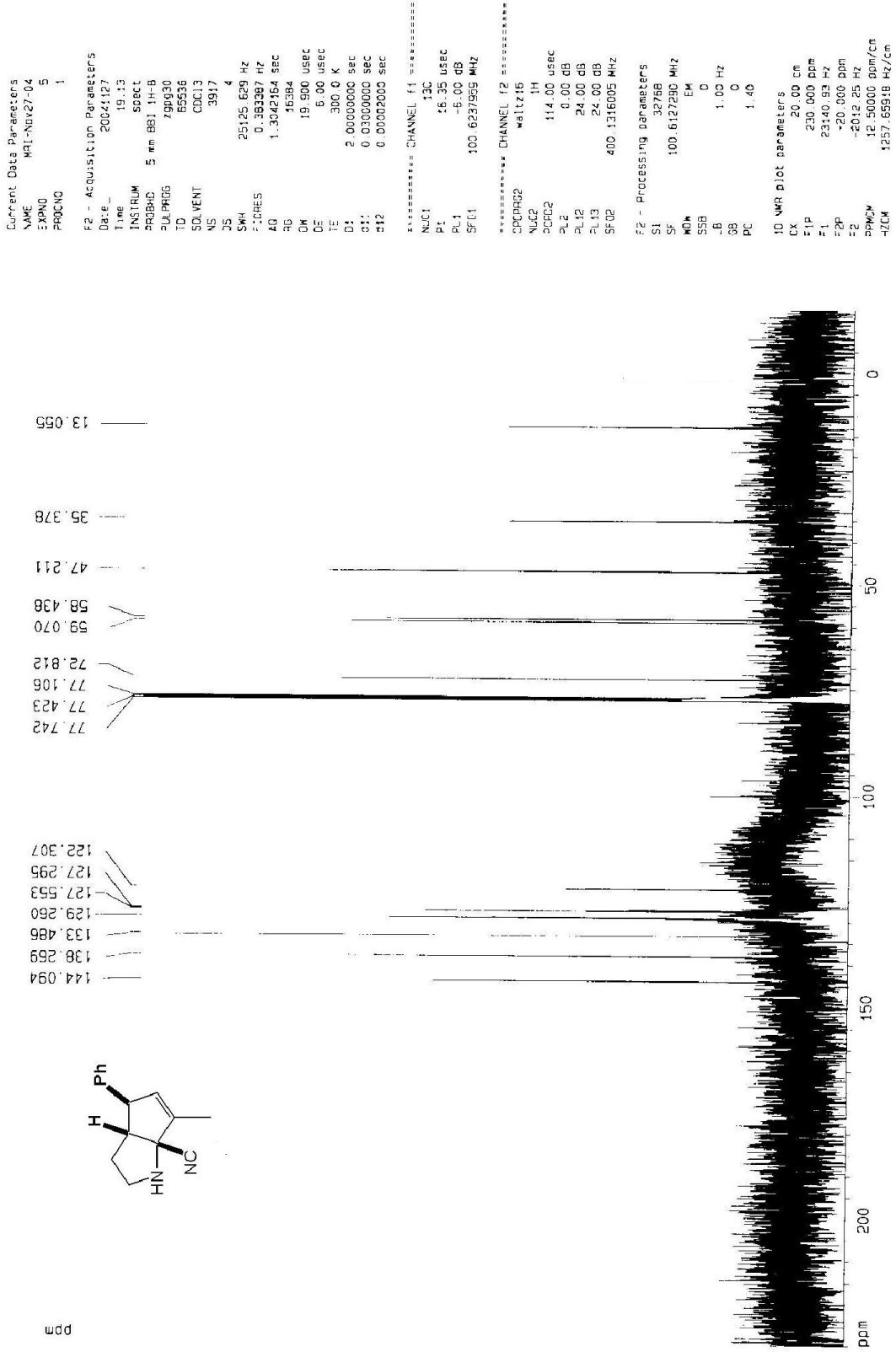
===== CHANNEL f1 =====

NUC1 1H  
 P1 6.45 usec  
 PL1 0.00 dB  
 SF01 400.1324710 MHz

F2 - Processing parameters  
 SI 32768  
 SF 400.1300000 MHz  
 MDW no  
 SSB 0  
 GB 0  
 PC 1.00

1D NMR plot parameters  
 CX 20.00 cm  
 F1P 10.000 ppm  
 F1 400.130 Hz  
 F2 -1.000 ppm  
 SFO1 400.13 Hz  
 SFO2 0.55000 ppm/cm  
 SFO3 220.07150 Hz/cm





```

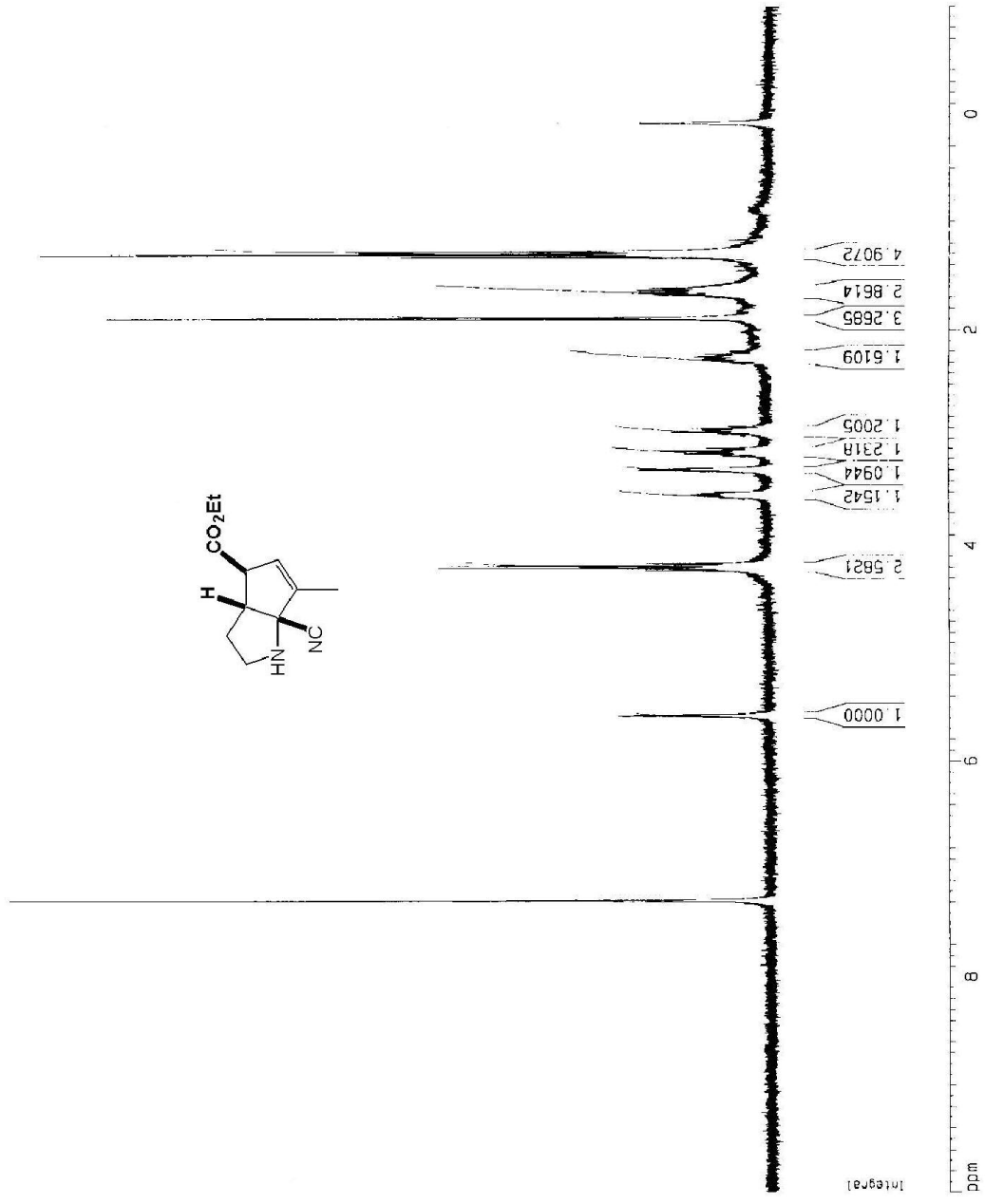
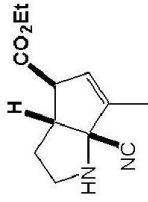
Current Data Parameters
NAME      MRI-Dec07-04
EXPNO    2
PROCNO   1

F2 - Acquisition Parameters
Date_    20041207
Time     16.01
INSTRUM  spect
PROBHD   5 mm Multinu
PULPROG  zg30
TD       65536
SOLVENT  CDCl3
NS       15
DS       2
SWH      6172.839 Hz
FIDRES   0.094190 Hz
AQ       5.3084560 sec
RG       812.7
DQ       81.000 uSec
DE       6.000 uSec
TE       300.0 K
D1       1.00000000 sec

===== CHANNEL f1 =====
NUC1     1H
P1       9.60 uSec
PL1      -6.00 dB
SFO1     300.1318534 MHz

F2 - Processing parameters
SI       32768
SF       300.1300000 MHz
WDW      ra
SSB      0
LB       0.00 Hz
GB       0
PC       1.00

ID NMR plot parameters
CX       20.00 cm
F1P      10.000 ppm
F1       3001.30 Hz
F2P      -1.000 ppm
F2       -300.13 Hz
PPMCH   0.55000 ppm/cm
HZCM    165.07150 Hz/cm
    
```



Concent Data Parameters  
 NAME MRI-Dec07-04  
 EXNO 5  
 PRJNO 1

F2 - Acquisition Parameters

Date\_ 26041208  
 Time\_ 7.56  
 INSTRUM spect  
 P1P2PC 5 cm QNP 1H/1  
 PULPROG zgpg30  
 TD 65536  
 SOLVENT CDCl3  
 NS 11451  
 DS 4  
 SWH 18755.532 Hz  
 FIDRES 0.285619 Hz  
 AQ 1.7433076 sec  
 RG 1024  
 CW 2B, 600, 6sec  
 CE 6.00, 0.58C  
 TE 300.0 K  
 DT 2.0000000 sec  
 D1 0.0500000 sec  
 D12 0.0600000 sec

\*\*\*\*\* CHANNEL f1 \*\*\*\*\*

NUC1 13C  
 P1 5.40 uSec  
 PL1 -6.00 dB  
 SF01 75.4106357 MHz

\*\*\*\*\* CHANNEL f2 \*\*\*\*\*

CPDPRG2 meltz16  
 NUC2 1H  
 PCPD2 115.00 uSec  
 PL2 0.00 dB  
 PL12 20.00 dB  
 PL13 20.00 dB  
 SF02 299.8711995 MHz

F2 - Processing parameters

SF 32758  
 SW 75.4032410 MHz  
 AQ 0  
 EQ 0  
 SSB 0  
 LB 1.00 Hz  
 GB 0  
 PC 1.40

10 NMR F1 F2 parameters

CX 20.00 cm  
 F1F 234.653 ppm  
 F2F 17663.24 Hz  
 F2C -20.000 ppm  
 F2 -1508.03 Hz  
 F2MPC 12.73265 ppm/cm  
 F2MC 560.06445 Hz/cm

