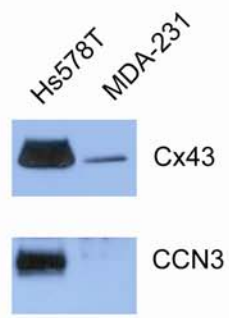


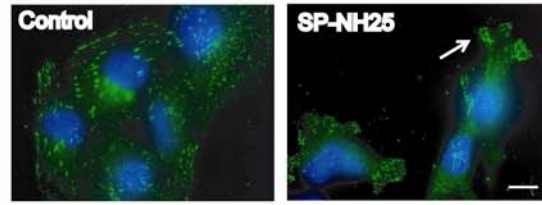
## FIGURE LEGENDS

**SUPPLEMENTARY FIGURE 1. Characterization of Cx43, CCN3 and  $\alpha$ V integrin expression in human breast tumor cell lines.** *A*, Western analysis showing the levels of endogenous Cx43 in cell lysate (top panel) and secreted CCN3 in culture medium (bottom panel) in Hs578T and MDA-MB-231 cell lines. *B*, Overexpression of CCN3 (SP-NH25) led to redistribution of  $\alpha$ V integrins containing focal adhesions to the leading edges of membrane protrusions (white arrow). Blue: DAPI nucleus staining, Green:  $\alpha$ V integrins, Scale bar: 10 $\mu$ m.

A



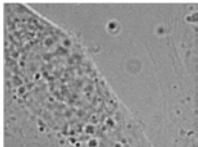
B



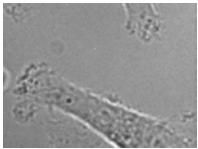
Suppl. Fig 1

## FIGURE LEGEND FOR MOVIES

Time-lapse phase movies of control MDA-MB-231 cells (Movie-Control) and CCN3-expressing MDA-MB-231 cells (Movie-CCN3) over a period of 20 minutes taken at a 30-second interval. Active membrane dynamics was observed in CCN3-expressing cells.



Movie-Control



Movie-CCN3