

SUPPLEMENTAL FIGURES

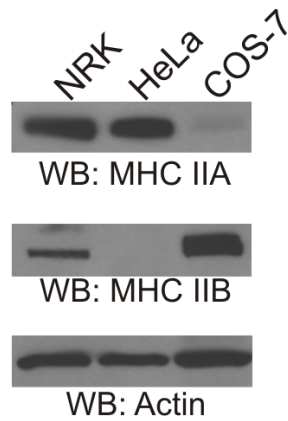


Figure S1. MHC Isoform Expression Levels. Whole cell lysates of NRK (Normal Rat Kidney), HeLa, and COS-7 cells were subjected to western blot analysis. NRK cells were used as a positive control as they express both MHC IIA and IIB. HeLa express only MHC IIA while COS-7 express no MHC-IIA but express MHC IIB.

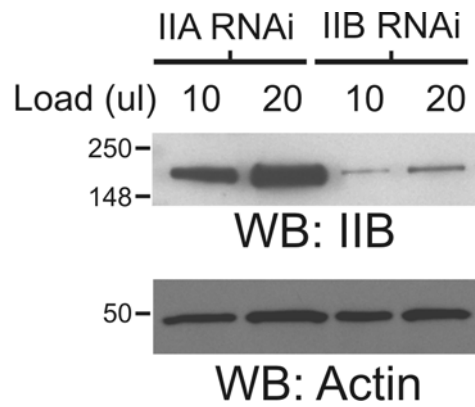


Figure S2. Suppression of MHC IIB Protein Expression with siRNA. COS-7 cells were transfected with MHC IIA siRNA as a control, or with MHC IIB siRNA. Whole cell protein lysates were collected after 72 hrs. Samples were normalized by performing SDS-PAGE and Coomassie staining, followed by whole-lane densitometry analysis with NIH ImageJ software. Western blots were then performed with the normalized lysates. Two quantities were loaded for each sample.