

Supplementary Figures:

Figure 1: Generation and characterization of rabbit polyclonal SLIMMER antibodies. A) The rabbit polyclonal SLIMMER-specific antibody was raised to amino acids 284 -297 in the unique C-terminal region of human SLIMMER (underlined). This rabbit polyclonal SLIMMER antibody has been designated α -SLIMMER²⁸⁴⁻²⁹⁷. B-a) To test specificity of the SLIMMER antibody, COS-1 cells were transfected with constructs encoding HA -SLIMMER. Cell lysates were prepared in Tris Saline lysis buffer with 1% Triton and immunoblotted with either affinity purified anti-SLIMMER peptide antibody (right) or pre-immune sera (left). Migration of HA-SLIMMER is indicated by arrow. ~50 μ g of protein was loaded. B-b) C2C12 myoblasts were prepared in Triton X-100 lysis buffer and immunoblotted with either affinity purified anti-SLIMMER peptide antibody (right) or pre-immune sera (left). Migration of endogenous SLIMMER is indicated by arrow. ~50 μ g of protein was loaded.

Figure 2: SLIMMER alters Siva-1-induced nuclear morphology in C2C12 myoblasts (from Figure 6).

To confirm expression of HA- and GFP-tagged proteins in C2C12 myoblasts, duplicate samples of transfected C2C12 myoblasts were harvested for immunoblots, 24 hours post-transfection. Lysates were prepared in HEPES lysis buffer and immunoblotted with anti-HA, anti-GFP, or anti-Siva-1⁽⁸²⁻⁹⁴⁾ antibody, or anti-actin and β -tubulin as indicated for protein loading control. Migration of HA- β gal and HA-SLIMMER is indicated by arrows.

Supplementary Table 1: Oligonucleotides used in PCR amplification

Construct	5'-Oligo	3'-Oligo	Reference Sequence
pGBKT7- LIM ½			84-743bp of
1+2+3 of FHL1/SLIMMER	ggaattcatggcggagaagtttgactgc	cggaattctcacttcttggccacaaagt	genebank entry U29538
pGBKT7- LIM 3+4 of FHL1	cggaattcatgcatgagaccaagttt	cggaattctcacagcttttggcaca	543-923bp of genebank entry U29538
pGBKT7- LIM 3+ER of SLIMMER	cggaattcatgcatgagaccaagttt	gcgaattcttattatcacggagcatttt tcagtggaagcagtagtctgtgcc	544-1056bp of genebank entry AF063002
pGBKT7- 18aa+ER of SLIMMER	cggaattcatgtacaagaactttgtg	cgaattctcacggagcatttttgcagtg	721-1056bp of genebank entry AF063002
pGBKT7-KyoT2	cggaattcatgctggagaagttcg	gcgaattcttattatcacggagcattttt gcagtggaagcagtagtctgtgcc	Full Length (32)
pGEX-5x1-Siva-1	ccttctagaacgcgtatgcccaagcggagctgcc	ccttctagaacgcgtttatcaggtctcgaacatgg	70-597bp of genebank entry NM_006427
pTrio12R-HEN	cctgctagccaccatggtgagcaagggcgagg	cctgctagcaggcctattaacgcgtagtccggcc ggactgtacagc	pEGFP-C2 (Clontech)

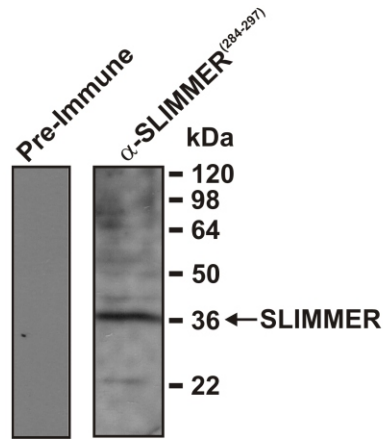
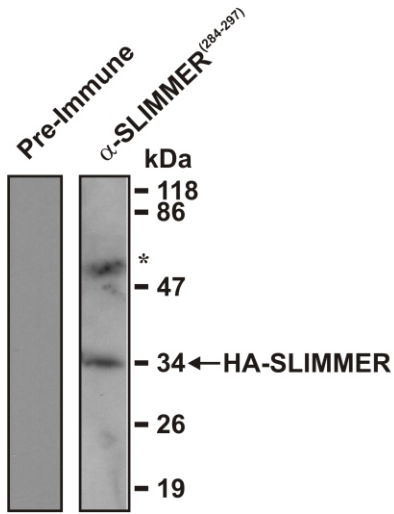
Supplementary Figure 1. Cottle et al

A



B-a) COS-1 cells

B-b) C2C12 Myoblasts



Supplementary Figure 2. Cottle et al

