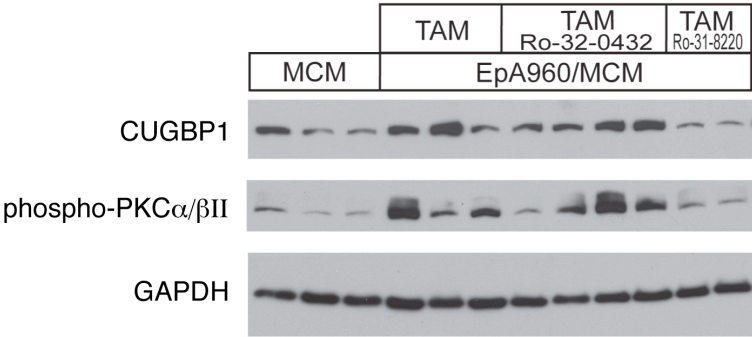


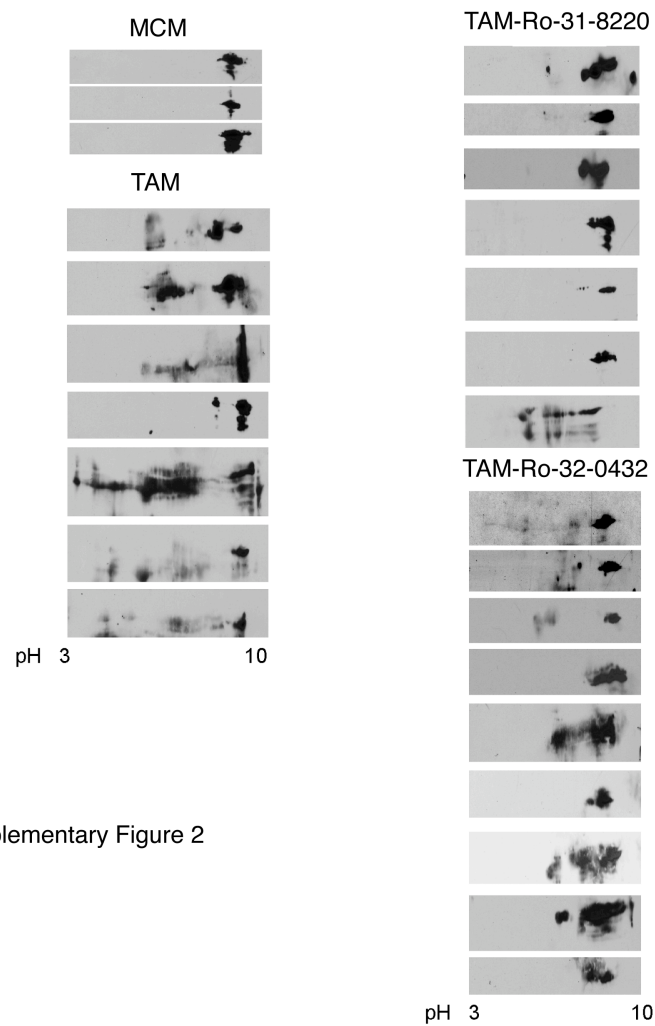
**Supplementary Figures and Tables**

**Supplementary Figure 1. Effect of PKC inhibitor Ro-32-0432 on PKC activation, and CUGBP1 protein levels in comparison to Ro-31-8220.** Western blot analysis of CUGBP1 (50 kDa) and phospho-PKC $\alpha/\beta$ II (75 kDa) in MCM, TAM, TAM-Ro-32-0432 and TAM-Ro-31-8220 groups. GAPDH was used as a loading control.



Supplementary Figure 1

**Supplementary Figure 2. CUGBP1 hyperphosphorylation is prevented by two PKC inhibitors.** 2D/western blot analysis of CUGBP1 in MCM mice treated with tamoxifen (MCM), EpA960/MCM mice treated with tamoxifen (TAM), and with both tamoxifen and one of the two inhibitors (TAM-Ro-31-8220) and (TAM-Ro-32-0432).



**Supplementary Table 1. Effect of Ro-32-0432 and Ro-31-8220 on survival rate and PR prolongation in mice induced to express EpA960(R) RNA determined by echocardiography.**

Treatment group	Mortality (number of dead animals/ number of total animals)	PR prolongation including heart block (number of affected animals/ number of total animals)	Reduced fractional shortening (number of affected animals/ number of total animals)
TAM	3/8	7/8	7/8
TAM + Ro-31-8220	1/7	1/7	1/7
TAM + Ro-32-0432	1/10	7/10	4/10