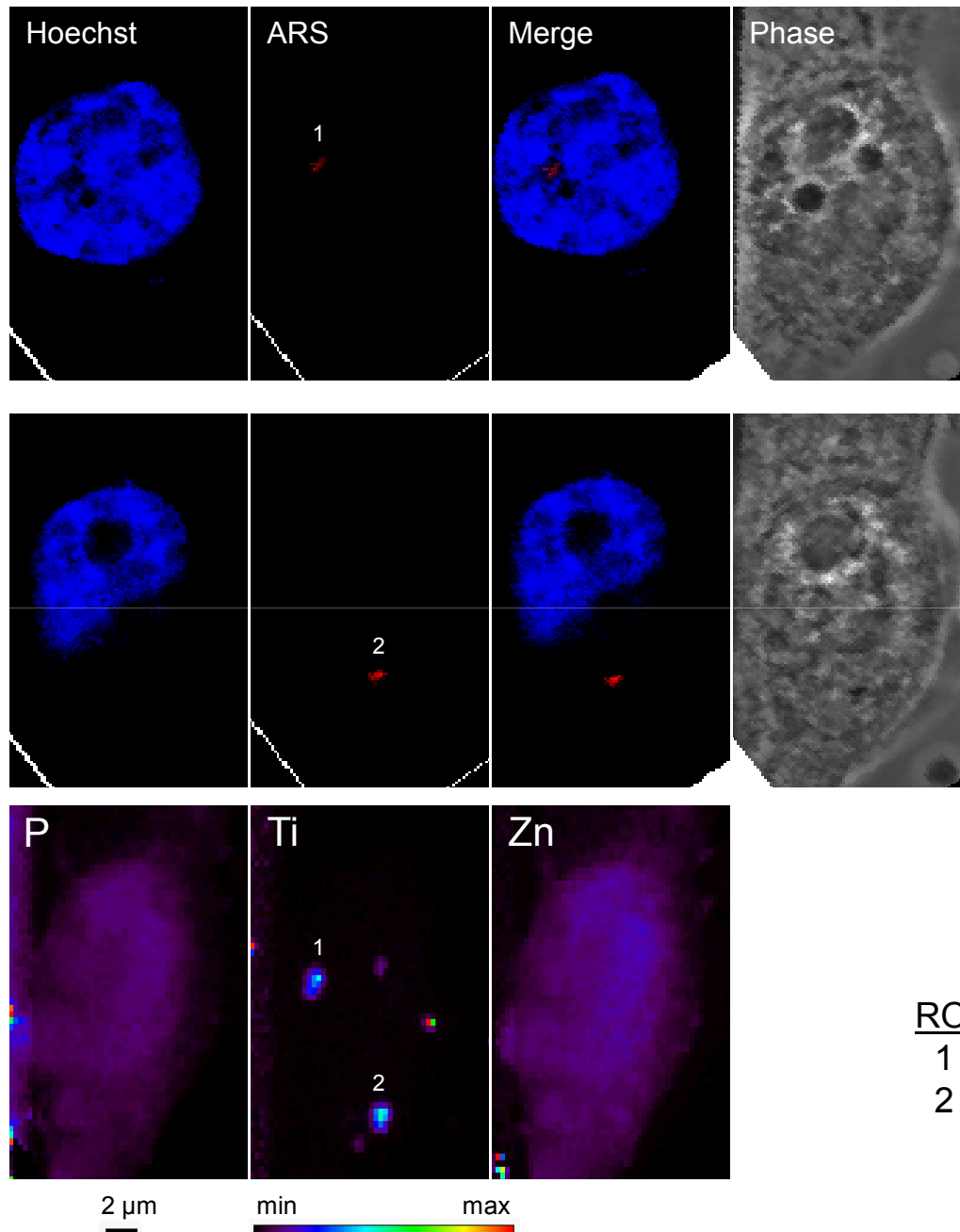


Supplemental



Supplemental Figure 1. Multi-planar Comparison of Confocal Microscopy and XFM. ARS labeled TiO_2 -DNA nanoconjugates were transfected in PC3-M cells. Confocal Microscopy reveals in one plane the presence of ARS labeled nanoconjugates within the nucleus (1 top row) and another plane reveals localization in the cytoplasm (2 middle row). XFM (bottom) reveals two strong intracellular titanium signals (1,2), as well as several other smaller aggregates. Comparison suggests that these overlap with the distributions visualized by XFM. The high phosphorus signal is due to the presence of the EM grid to which the cell had adhered.

ROI	Ti ($\mu\text{g}/\text{cm}^2$)	Ti:P	Ti:Zn	Zn:P
1	1.92	.08	4.41	55.65
2	1.88	.09	4.50	48.48