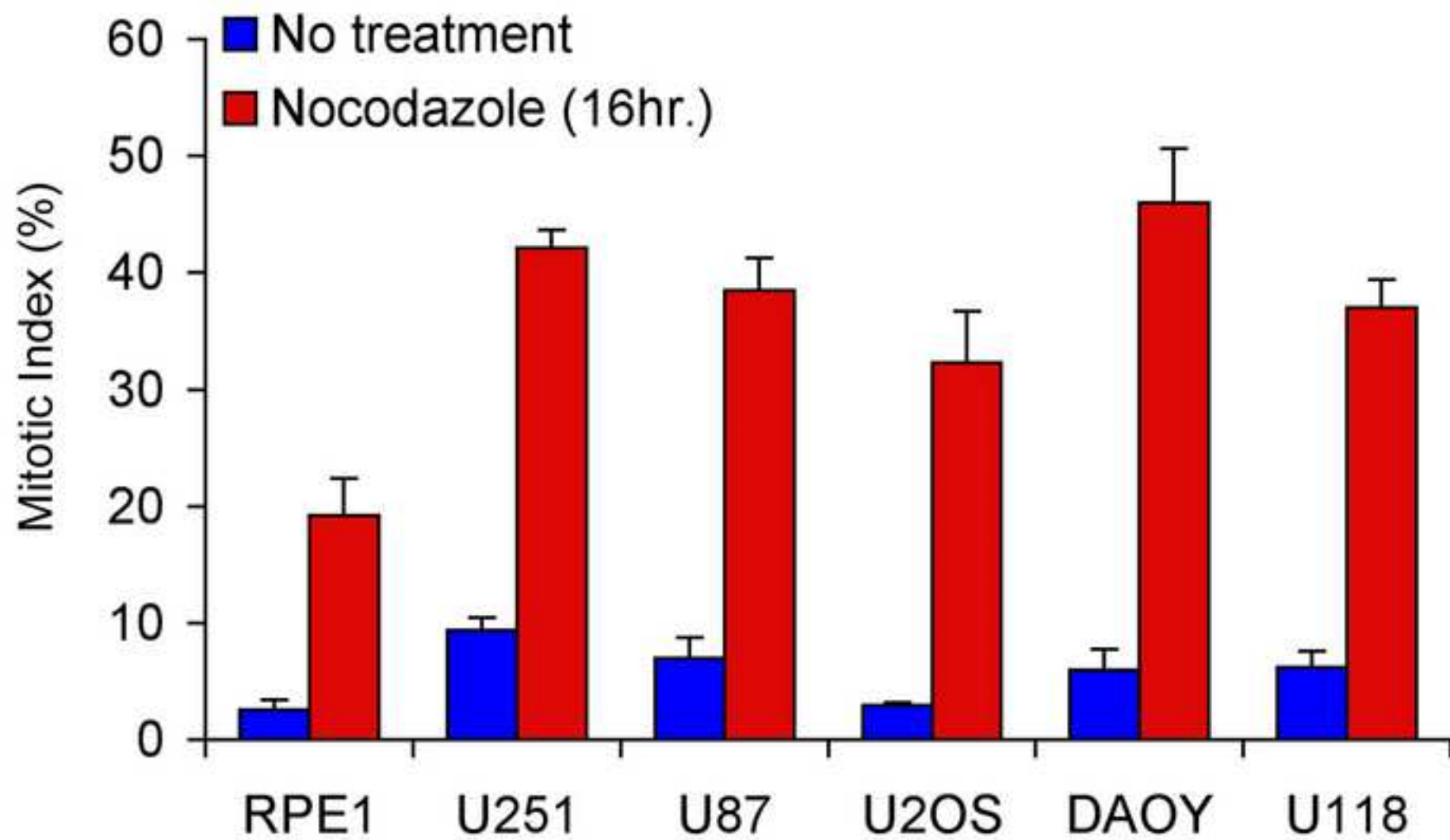


Supplementary Table 1

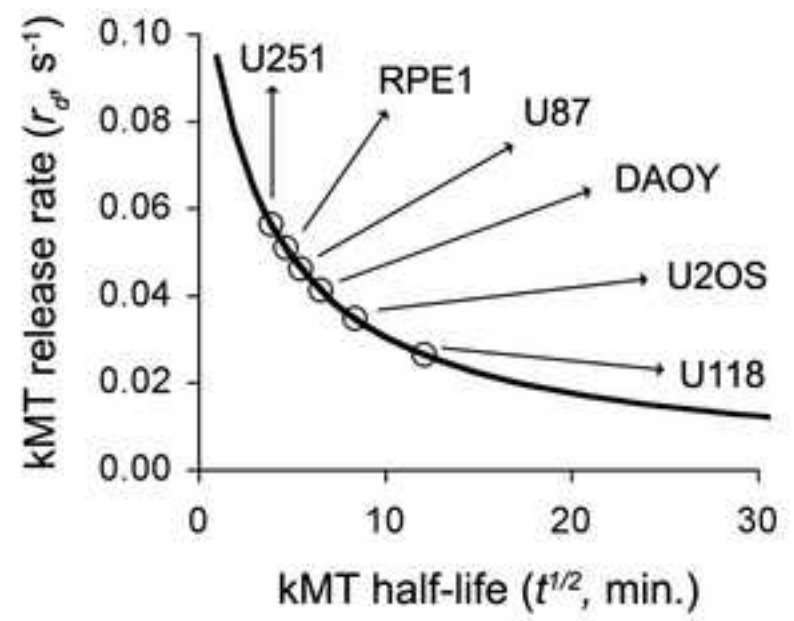
	Spindle Geometry			Anaphases/telophases	
	Monopolar	Bipolar	Multipolar	Bipolar	Multipolar
RPE-1	9.2±2.6	85.5±3.5	5.3±1.2	100.0±0.0	0.0±0.0
U251	5.5±2.0	85.6±5.1	8.9±3.7	98.1±0.1	1.9±0.1
U87	2.4±1.6	64.2±2.8	33.4±2.7	93.1±1.8	6.9±1.8
U2OS	5.8±0.4	89.6±1.1	4.7±0.6	97.4±1.7	2.6±1.7
DAOY	15.0±1.8	79.5±2.6	5.5±0.8	99.3±0.7	0.7±0.7
U118	4.6±1.5	79.1±3.8	16.3±2.6	96.7±0.7	3.3±0.7

Characterization of spindle geometries of methanol fixed cell lines used in this study.

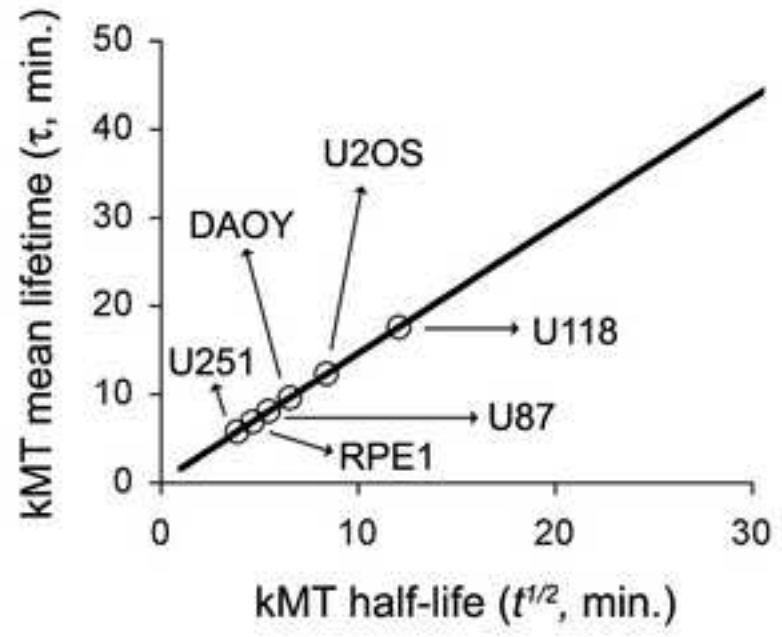
Spindles were scored in pre-anaphase cells as monopolar, bipolar or multipolar, or after the onset of anaphase as bipolar or multipolar. Values for each of pre-anaphase and post-anaphase spindles represent mean ± s.e.m. n = 150 cells, 3 independent experiments.



A



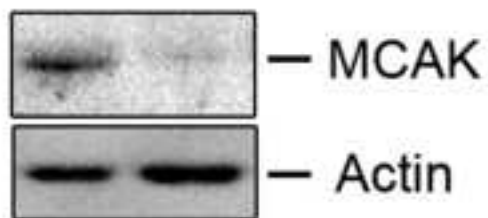
B



A

MCAK RNAi

- +



B

APC RNAi

- +

