

Supporting Information

Malaria-Infected Mice Live Until At Least Day 30 After A New Monomeric Trioxane Combined with Mefloquine Are Administered Together In A Single Low Oral Dose.

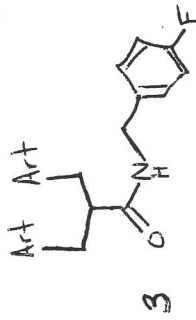
Lauren E. Woodard,^a Wonsuk Chang,^a Xiaochun Chen,^b Jun O. Liu,^b Theresa A. Shapiro,^{c,d} and Gary H. Posner,^{*a,d}

^aDepartment of Chemistry, School of Arts and Sciences, The Johns Hopkins University, 3400 North Charles Street, Baltimore, Maryland 21218-2685; ^bDepartment of Pharmacology and Oncology, School of Medicine, The Johns Hopkins University, Baltimore, Maryland 21205; ^cDivision of Clinical Pharmacology, Department of Medicine, School of Medicine, The Johns Hopkins University, Baltimore, Maryland 21205; ^dThe Johns Hopkins Malaria Research Institute, Bloomberg School of Public Health, Baltimore, Maryland 21205

Contents of SI:

¹ H and ¹³ C spectra of compound 3	Page S2-S3
¹ H and ¹³ C spectra of compound 4a	Page S4-S5
¹ H and ¹³ C spectra of compound 4b	Page S6-S7

175.77
163.24
160.80
134.27
129.82
129.74
115.32
115.11
103.40
103.32
102.94
100.83
100.80
99.96
99.36
96.98
88.63
88.38
81.16
81.05
77.32
77.00
76.69
76.42
73.69
52.53
52.35
44.68
44.49
44.31
43.28
37.42
37.20
36.52
36.47
34.47
34.43
33.29
32.87
30.15
29.93
26.20
26.04
24.85
24.76
24.63
24.50
20.18



Current Data Parameters
NAME WCH_B64_75_C13
EXPNO 1
PROCNO 1

F2 - Acquisition Parameters

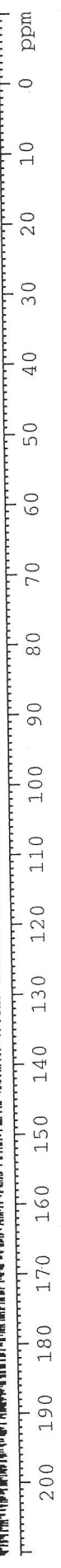
Date_ 20060627
Time 15.56
INSTRUM spect
PROBHD 5 mm PABBO BB-
PULPROG zgpg30
TD 65336
SOLVENT CDC13
NS 433
DS 4
SWH 23980.814 Hz
AQ 0.365918 Hz
RG 1.3664756 sec
EG 45.3
DW 20.850 usec
DE 6.00 usec
TE 296.0 K
D1 2.0000000 sec
d11 0.0300000 sec
DELTA 1.8999998 sec
TDO 12

==== CHANNEL f1 =====
NUC1 13C
P1 8.25 usec
PL1 -3.00 dB
SFO1 100.6228298 MHz

==== CHANNEL f2 =====
CPDPRG2 waltz16
NUC2 1H
PCPD2 80.00 usec
PL2 -4.00 dB
PL12 14.00 dB
PL13 14.00 dB
SFO2 400.1316005 MHz

F2 - Processing parameters

SI 32768
SF 100.6127726 MHz
WDW nc
SSE 0
LB 0.00 Hz
GB 0
PC 1.40



7.276
7.271
7.263
7.256
7.247
7.241
7.203
7.018
7.002
6.997
6.980
5.267
4.410
4.400
4.396
4.388
2.727
2.708
2.456
2.436
2.352
2.333
2.328
2.316
2.293
2.018
1.988
1.981
1.864
1.838
1.826
1.819
1.809
1.792
1.783
1.662
1.637
1.628
1.578
1.561
1.546
1.418
1.389
1.373
1.356
1.347
1.273
1.258
1.246
1.230
0.958
0.943
0.886
0.867
0.850

Current Data Parameters
NAME LEW2-113
EXPNO 1
PROCNO 1

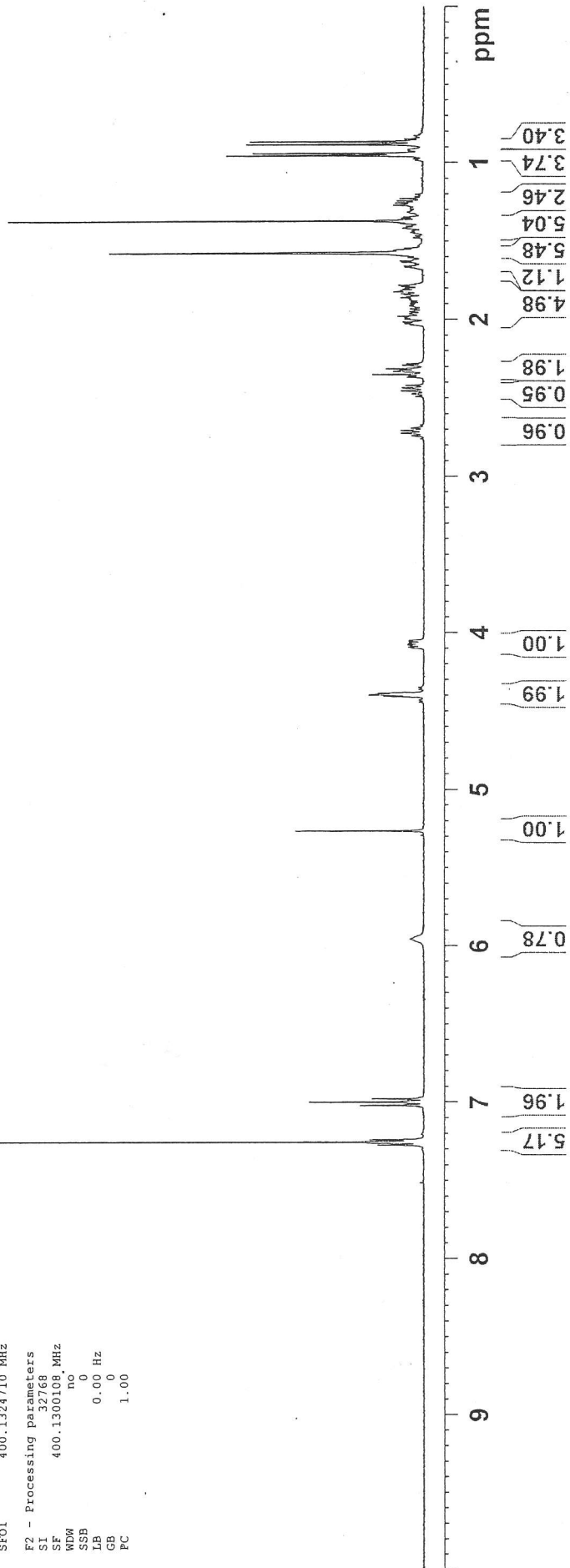
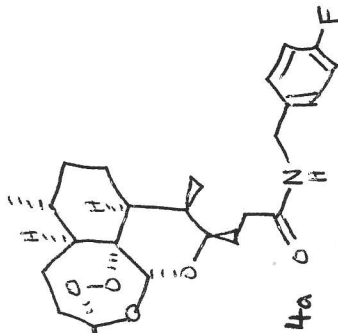
F2 - Acquisition Parameters

Date_ 20080813
Time_ 9.22
INSTRUM spect
PROBHD 5 mm PABBO BB-
PULPROG zg30
TD 65536
SOLVENT CDCl3
NS 32
DS Z
SWH 8278.146 Hz
FIDRES 0.126314 Hz
AQ 3.9584243 sec
RG 456.1
DW 60.400 usec
DE 6.00 usec
TE 295.8 K
D1 1.00000000 sec
TDO 1

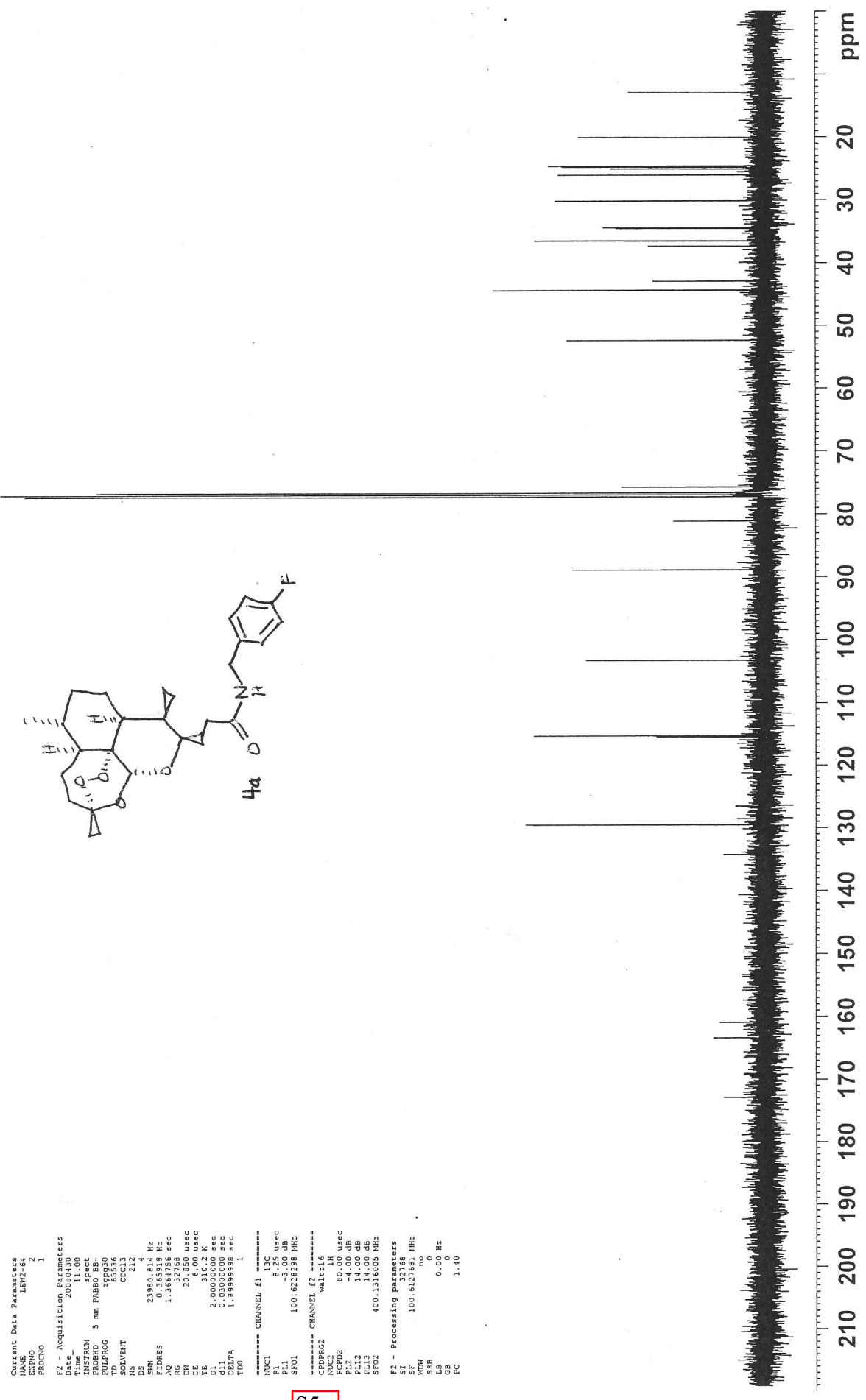
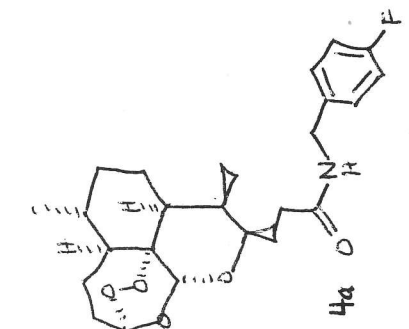
===== CHANNEL f1 =====
NUC1 1H
P1 8.60 usec
PL1 -4.00 dB
SFOL 400.1324710 MHz

F2 - Processing parameters

SF 400.1300108 MHz
WDW no
SSB 0
LB 0.00 Hz
GB 0
PC 1.00



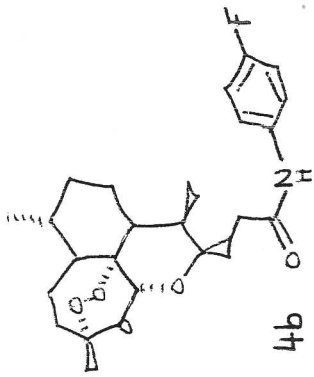
172.97
163.40
160.96
134.27
129.58
129.50
115.52
115.31
103.28
88.91
81.14
77.32
77.00
76.68
75.75
52.44
44.45
43.01
37.43
36.58
34.64
34.48
30.22
26.11
25.15
24.89
24.68
20.12
13.00



```

Current Data Parameters
Name      LEW2-61
Date_     2010100
Time      17.00
PROCNO    1
=====
F2 - Acquisition Parameters
Date_     2010100
Time      17.00
INSTRUM   spect
PROBHD    5 mm PABBO BB-
PULPROG   zgpg30
SOLVENT   CDCl3
NS         212
DS         4
SWH        23968.51 Hz
FIDRES    0.364593 Hz
AQ         1.3366756 sec
RG         32768
RR         20.860 usec
DE         0.100 usec
TE         310.2 K
D1         2.00000000 sec
d11        0.03000000 sec
DELTA     1.00000000 sec
TD0       1.00000000
===== CHANNEL f1 =====
NUC1      13C
P1         8.25 usec
PL1        -3.00 dB
SFO1      100.626289 MHz
===== CHANNEL f2 =====
CPDPRG2   waltz16
NUC2      1H
P2         80.00 usec
PL2        14.00 dB
SFO2      400.1316005 MHz
=====
F2 - Processing parameters
SI         32768
SF         100.6127661 MHz
WDW        EM
SSB        0
LB         0.00 Hz
GB         0
PC         1.40
  
```


171.33
 157.89
 134.17
 121.67
 121.59
 115.44
 115.22
 103.42
 88.79
 81.08
 77.30
 76.98
 76.66
 76.12
 52.30
 44.31
 37.34
 36.42
 35.62
 34.32
 30.85
 30.13
 25.98
 24.82
 24.55
 20.09
 13.04



```

Current Data Parameters
NAME      LHM2-114
EXPNO     2
PROCNO    1
F2 - Acquisition Parameters
Date_     20080814
Time      14.16
INSTRUM   spect
PROBHD    5 mm PABBO-
PULPROG   zgpg30
TD         65536
SOLVENT   CDCl3
DS         32
SWH        23980.814 Hz
FIDRES     0.365918 Hz
AQ         1.336728 sec
RG          3278
DM         20.850 usec
DE         6.00 usec
TE         296.5 K
NUC1       0.01000000 sec
d11        0.01000000 sec
DELTA     1.8999999 sec
TD0        1
===== CHANNEL f1 =====
NUC1       13C
P1         8.25 usec
PL1        -1.90 dB
SFO1       100.622828 MHz
===== CHANNEL f2 =====
CPDPRG2   waltz16
NUC2
PCPD2     80.00 usec
PL2       -4.00 dB
PL12      14.00 dB
PL13      14.00 dB
SFO2       400.1316005 MHz
F2 - Processing Parameters
SI         32768
SF         100.6127776 MHz
WDW        no
SSB        0
GB         0
LB         0
PC         1.40
  
```

