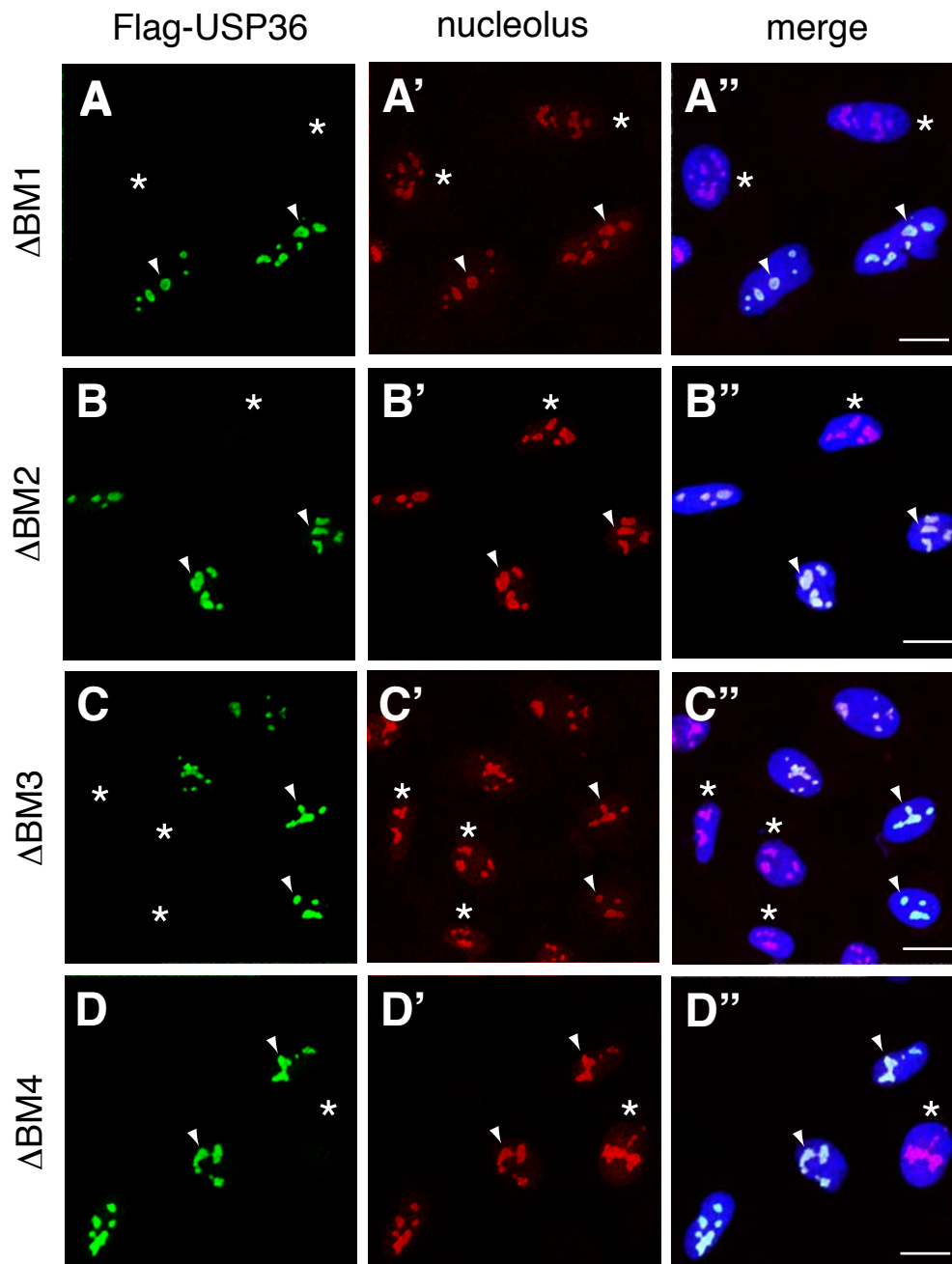


Endo et al. Supplemental Fig. S1



BMs 1~4 are dispensable for the nucleolar localization of USP36

HeLa cells were transfected with Flag-tagged USP36 ^{ΔBM1} (A-A''), USP36 ^{ΔBM2} (B-B''), USP36 ^{ΔBM3} (C-C''), or USP36 ^{ΔBM4} (D-D''), and double-stained with anti-Flag (A-D) and anti-nucleolus (A'-D') antibodies. A''-D'' are merged images in which nuclei were also stained in blue. Arrowheads indicate typical nucleoli. Asterisks indicate untransfected cells. Scale bars: 20 μm .