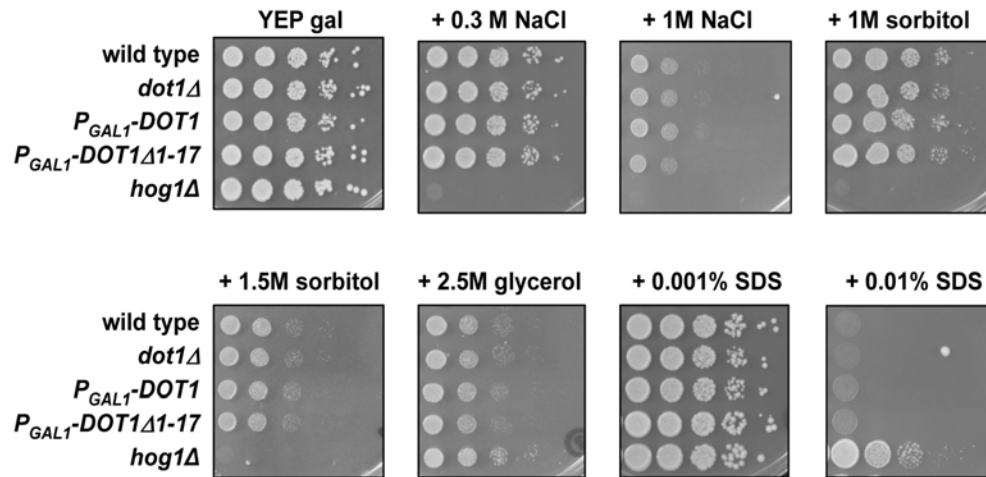


## Supplementary Material

**Figure 1. Cells lacking Dot1 or expressing only one Dot1 isoform are not sensitive to changes in osmolarity.**



Yeast cells were spotted in tenfold dilutions on YEP media containing 2% galactose as the carbon source. The plates contained the following additives: 0.3M NaCl, 1M NaCl, 1M sorbitol, 1.5M sorbitol, 2.5M glycerol or 0.01% SDS. The following strains were used: wild type (UCC7164), *dot1Δ* (UCC7183), *P<sub>GAL1</sub>-3xHA-DOT1* (NKI1059) and *P<sub>GAL1</sub>-3xHA-DOT1Δ1-17* (NKI1060) The known osmosensitive strain *hog1Δ* (YSC-2724, Open Biosystems) was used as a positive control.