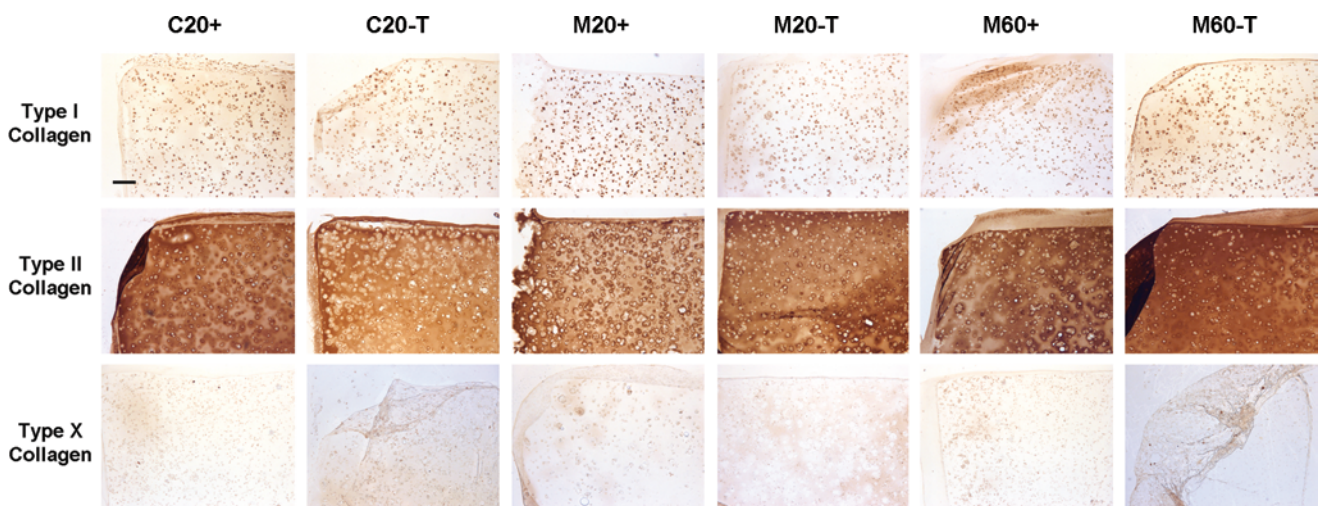
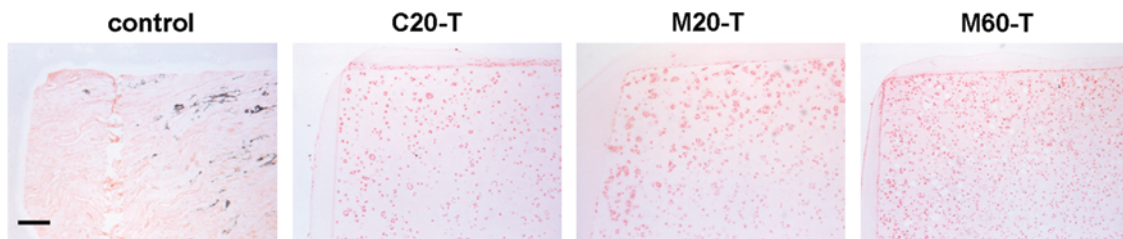


SUPPLEMENTARY FIG. 1. Histologic appearance of cell-seeded constructs taken at 5× magnification. Hematoxylin and eosin, Alcian Blue, and Picrosirius Red staining of C20, M20, and M60 constructs cultured in + and T media. Images represent approximately one-quarter of construct expanse. Scale bar: 200 μm .



SUPPLEMENTARY FIG. 2. Distribution of collagen types I, II, and X in engineered constructs cultured in + or T medium for 7 weeks. Chondrocyte- and MSC-laden constructs showed weak pericellular staining for type I collagen and intense staining for type II collagen regardless of initial seeding density or media formulation. Type X collagen was not apparent in any group. Images were taken at 5× magnification and represent approximately one-quarter of construct expanse. Scale bar: 200 μm .



SUPPLEMENTARY FIG. 3. Von Kossa staining of engineered constructs cultured in T medium for 7 weeks. Mineralization (black staining) was not observed in chondrocyte- or MSC-laden gels. Images were acquired at 5× magnification and represent approximately one-quarter of construct expanse. Scale bar: 200 μm .