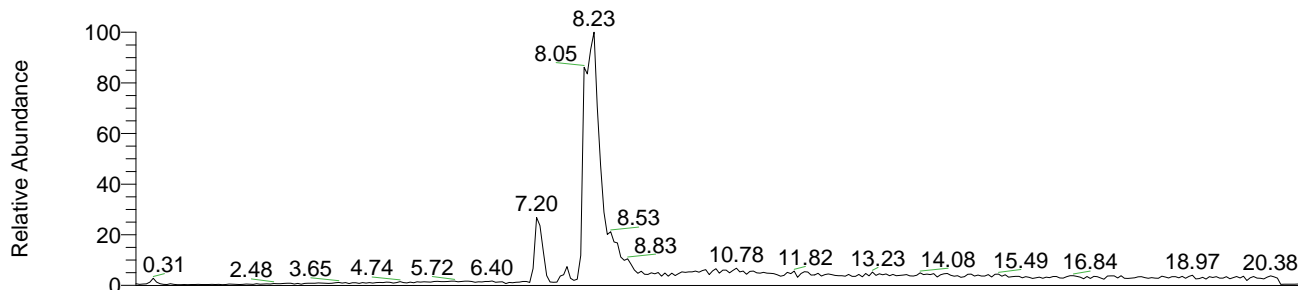
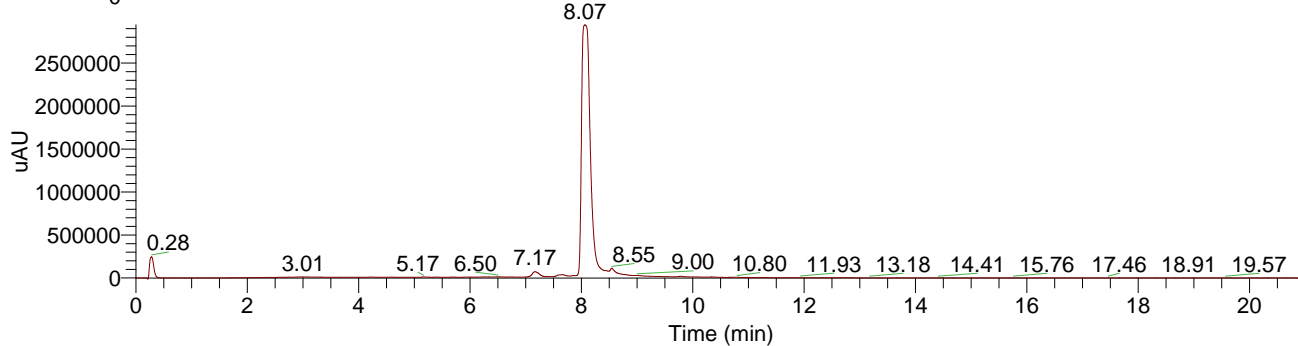


RT: 0.00 - 21.03

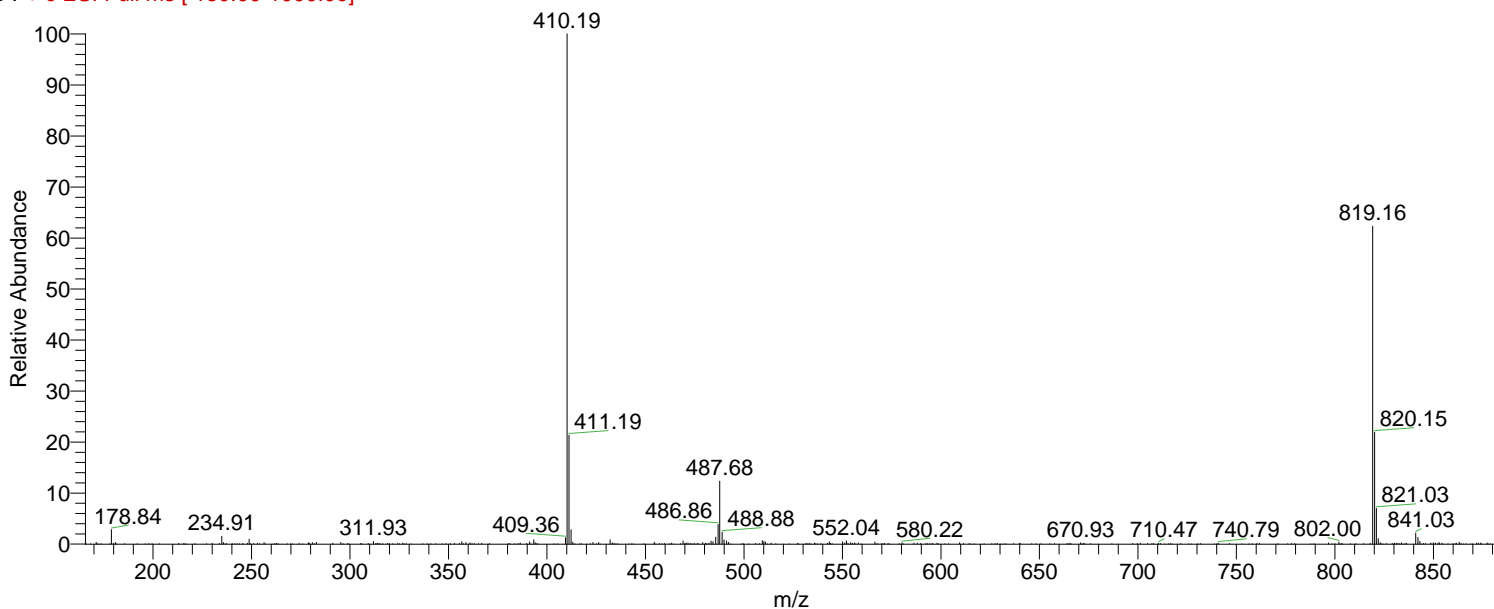


NL: 6.93E8
Base Peak m/z=
200.00-500.00 F: +
c ESI Full ms [
150.00-1000.00]
MS Lcq_5777



NL: 2.94E6
Channel A UV
Lcq_5777

Lcq_5777 #267 RT: 8.17 AV: 1 NL: 6.46E8
F: + c ESI Full ms [150.00-1000.00]



Lcq_5777 #239 RT: 7.32 AV: 1 NL: 9.31E7
F: + c ESI Full ms [150.00-1000.00]

