

Single Mass Analysis

Tolerance = 10.0 PPM / DBE: min = -1.5, max = 100.0

Element prediction: Off

Number of isotope peaks used for i-FIT = 3

Monoisotopic Mass, Even Electron Ions

73 formula(e) evaluated with 1 results within limits (up to 50 closest results for each mass)

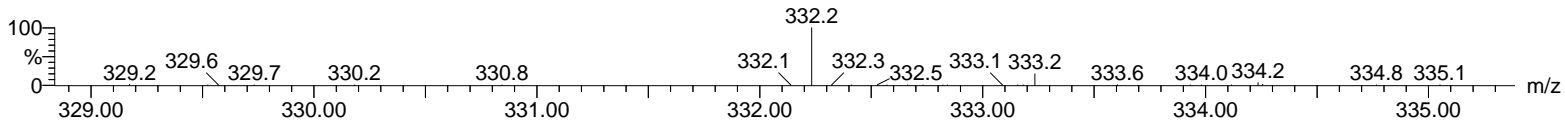
Elements Used:

C: 0-100 H: 0-150 N: 2-4 O: 1-3 P: 0-1

Mathews, Thomas, VPC45064 Mass Spectrometry Center, SCS, University of Illinois

Qtof_24746a 41 (2.901) AM (Cen,3, 80.00, Ht,15000.0,558.36,0.70); Sm (SG, 2x3.00); Cm (40:44)

2: TOF MS ES+
6.46e+001



Minimum: -1.5
Maximum: 5.0 10.0 100.0

Mass	Calc. Mass	mDa	PPM	DBE	i-FIT	Formula
332.2329	332.2338	-0.9	-2.7	6.5	0.3	C19 H30 N3 O2