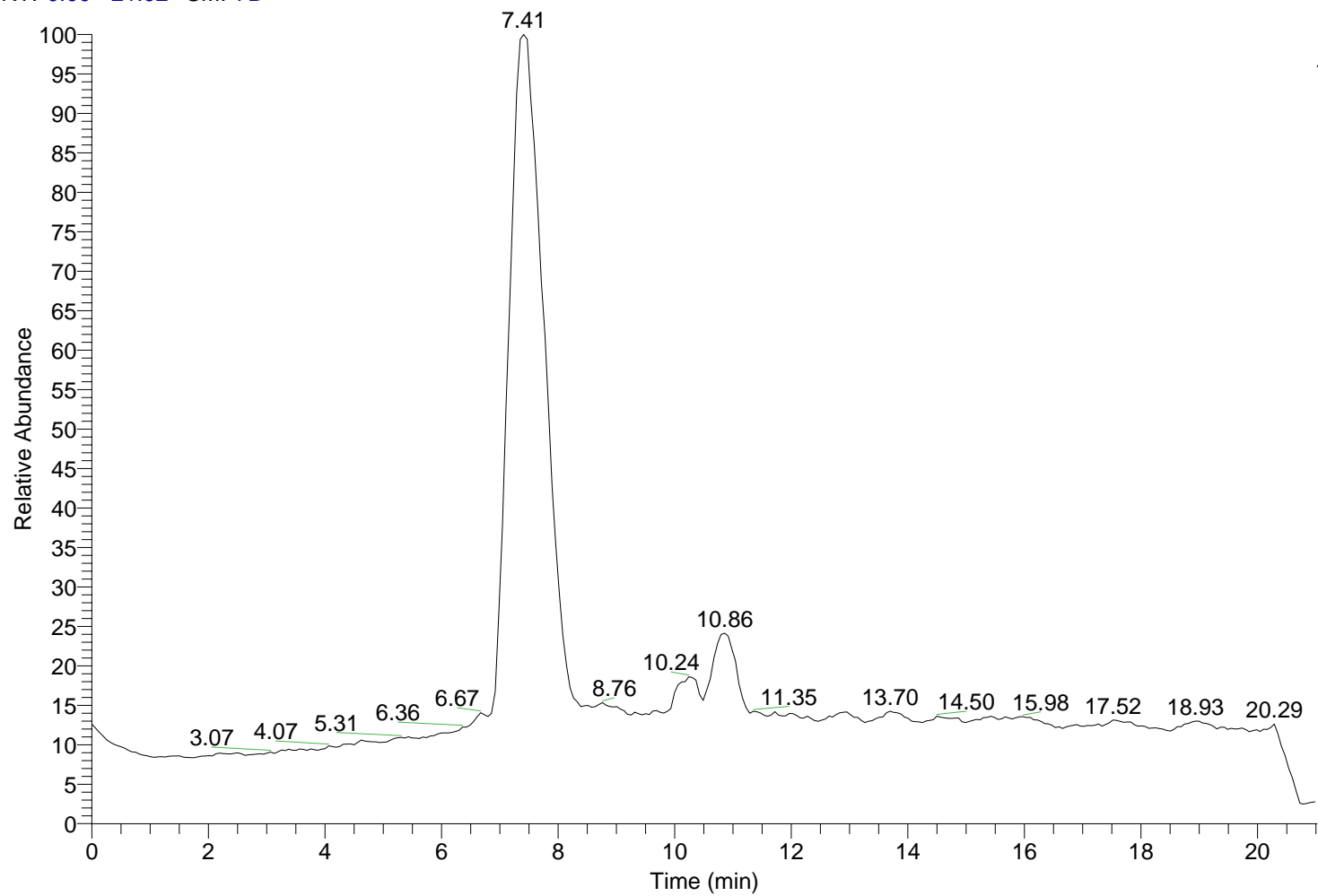
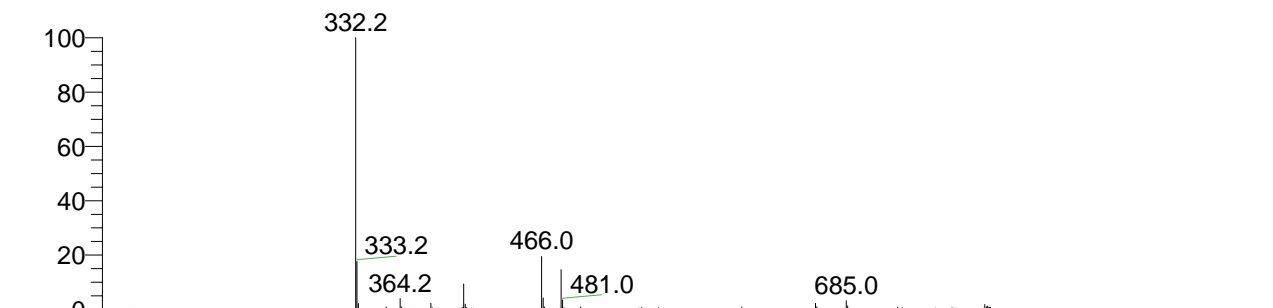


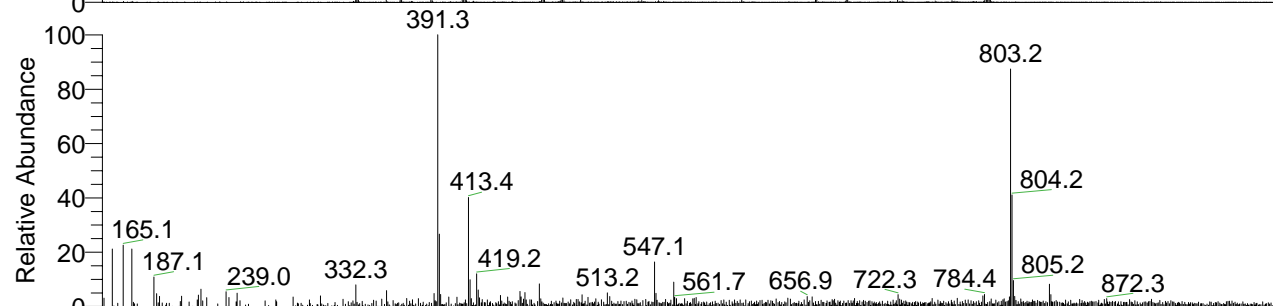
RT: 0.00 - 21.02 SM: 7B



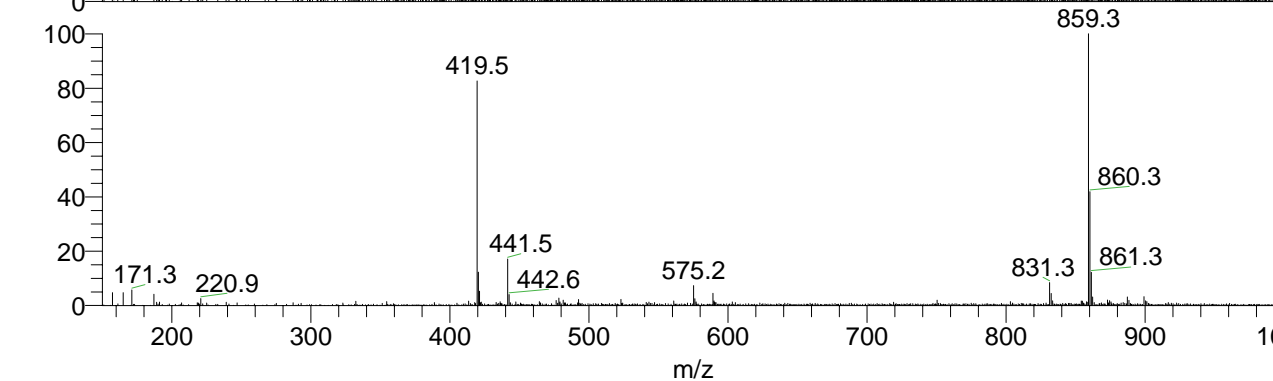
NL:
1.73E9
TIC F: + c
ESI Full ms [
150.00-
1000.00] MS
Lcq_5779



NL: 4.48E8
Lcq_5779#225-257 RT:
6.98-7.96 AV: 17 SB: 45
3.01-5.74 T: + c ESI Full
ms [150.00-1000.00]



NL: 1.19E7
Lcq_5779#318-338 RT:
9.87-10.43 AV: 10 SB: 45
3.01-5.74 T: + c ESI Full
ms [150.00-1000.00]



NL: 4.35E7
Lcq_5779#343-360 RT:
10.61-11.10 AV: 9 SB: 45
3.01-5.74 T: + c ESI Full
ms [150.00-1000.00]