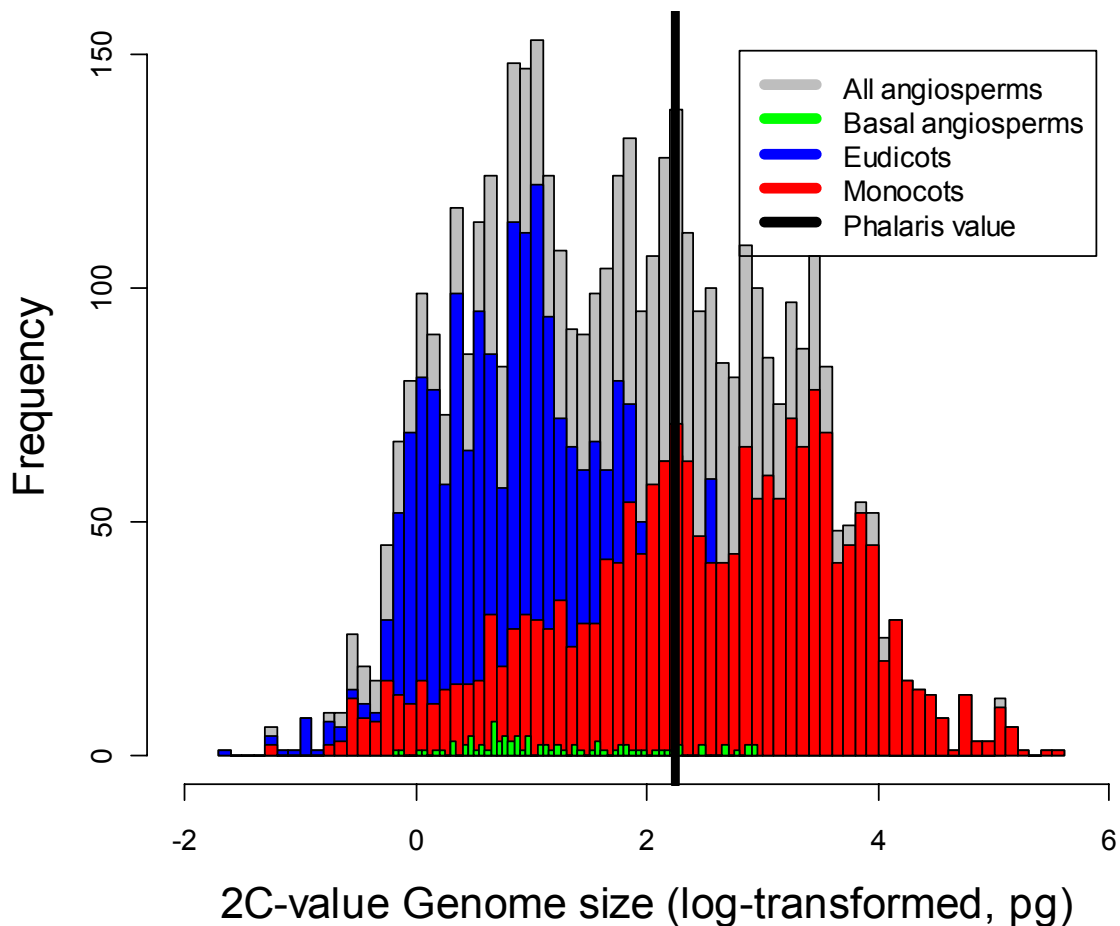


## SUPPLEMENTARY DATA

FIG. S1. Distribution of genome size values (2C-value, pg) observed among angiosperm species and position of mean genome size of *Phalaris arundinacea* (approximately 9.26 pg) relative to other monocot species (red bars). Data for eudicot species (red bars) and basal angiosperm species (green bars) are also displayed. The entire sample of angiosperm species (4427 species) is represented in grey bars.



Data source for genome size values:

**Bennett MD, Leitch IJ. 2004.** *Angiosperm DNA C-values database (release 5.0)*. London: Royal Botanic Gardens, Kew. <http://data.kew.org/cvalues/homepage.html>.