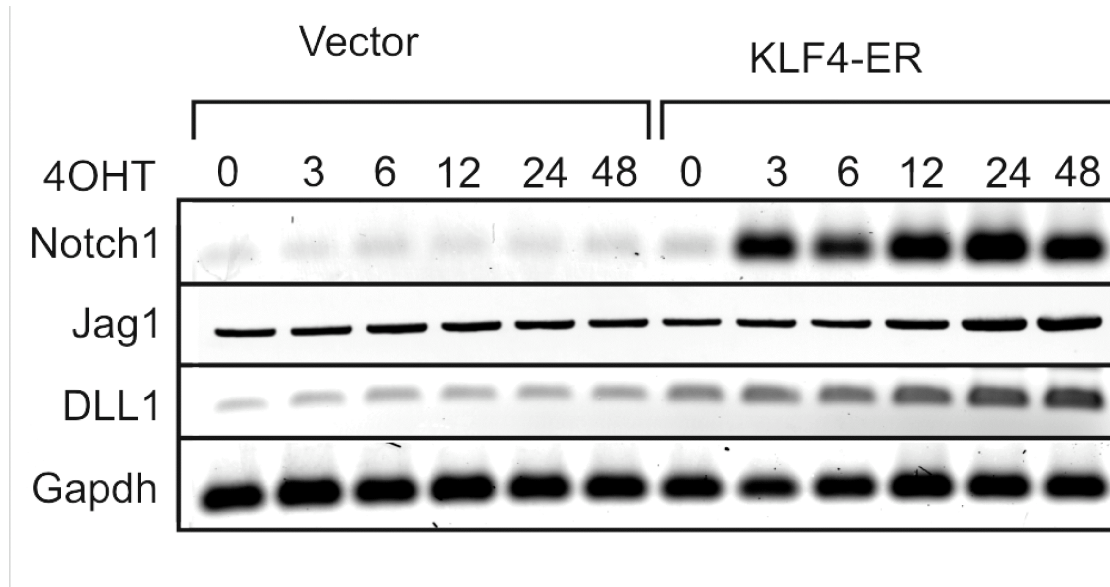
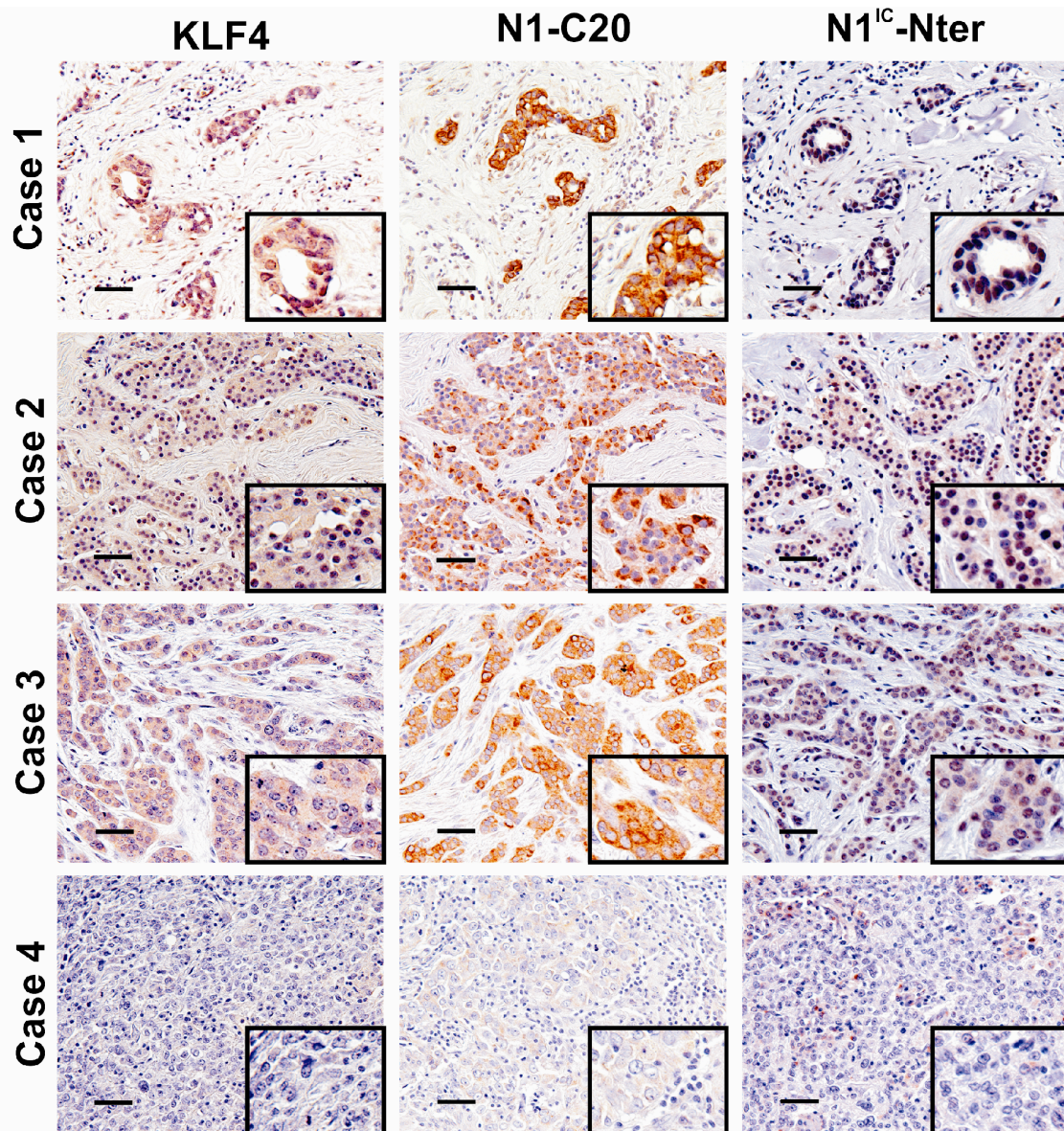


**Supplementary Figures**



**Supplementary Figure 1. Semi-quantitative RT-PCR analysis of Notch1 ligands.**

Semi-quantitative RT-PCR analysis was performed using total RNA isolated from Vector or KLF4-ER-cells treated with 4OHT for the indicated period. Gapdh served as control.



**Supplementary Figure 2. Immunostaining of human breast cancers with antibodies to KLF4, and Notch1 (N1-C20, and N1<sup>IC</sup>-Nter).** Staining of tumor cells is indicated by a brown precipitate. Cases shown are representative of a total of 8 cases with positive staining and 4 cases with low/negative staining. No staining was observed when normal rabbit immunoglobulin was used as the primary antibody (not shown). Scale bar, 50  $\mu$ m.

**Immunostaining analysis of KLF4 and Notch in primary breast cancers  
see Fig 2B**

<u>Case#</u>	<u>KLF4 CYTO</u>	<u>KLF4 Nuclear</u>	<u>Ntc1 Cyto</u>
breast IDC			
1	0	0	0
2	0	0	0
3	0	0	0
4	0	0	0
5	0	0	0
6	0	0	0
7	0	0	0
8	0	0	0
9	0	0	0
10	0	0	0
11	0.08	0.16	0
12	0.3	0.3	0
13	0.12	0.3	0
14	0	0	0.1
15	0.06	0.15	0.15
16	0.4	0.4	0.15
17	0	0	0.2
18	0	0	0.2
19	0.3	0.3	0.2
20	0.3	0.3	0.2
21	0.7	0.4	0.25
22	0.4	0.35	0.3
23	0.4	0.4	0.3
24	0.5	0.25	0.4
25	0.3	0.3	0.4
26	0.4	0.4	0.4
27	0.2	0.25	0.45
28	0	0	0.455
29	0.2	0.2	0.56
30	0	0	0.6
31	0	0	0.6
32	0	0	0.66
33	0.3	0.3	0.85
34	0.3	0.3	1
35	1.75	0.375	1.1
36	0.3	0.3	1.15
37	0.4	0.4	1.15
38	0.7	0.4	1.35
39	0.3	0.3	1.4
40	0.8	0.39	1.45
41	0.7	0.3	1.65
42	0.7	0.45	1.7
43	0.4	0.4	1.8
44	0	0	2.3
45	1	1	0
46	0.7	0.5	0.2
47	0.7	0.7	0.2

48	0.12	1.4	0.35
49	0	1.5	0.375
50	0.5	0.5	0.4
51	0	0.75	0.4
52	0	0.6	0.5
53	0	1.3	0.55
54	0.6	0.5	0.6
55	0.76	0.9	0.7
56	0.5	1.4	0.73
57	0	1	0.75
58	1	1.25	0.8
59	0.2	1	0.85
60	0.5	1.25	0.9
61	0	1	0.95
62	0.5	1.125	1.05
63	0.28	1.35	1.05
64	0.3	1.3	1.1
65	0.6	0.6	1.15
66	0.5	1.15	1.25
67	0.5	0.5	1.3
68	1.5	1.35	1.3
69	0.75	0.75	1.4
70	0.5	0.95	1.4
71	0.5	1.45	1.4
72	0.51	0.51	1.5
73	0.85	1.15	1.5
74	0	2	1.5
75	0.5	1.4	1.65
76	0.7	0.7	1.7
77	0.5	1.2	1.825
78	2	1.45	1.9
79	0.5	1.5	1.9
80	1.25	1.5	2.05
81	1	1	2.25
82	0.5	0.5	2.3
83	0.7	0.5	2.4
84	0.4	1.75	2.4
85	0.5	1.35	2.45
86	1.5	0.75	2.75
87	0.5	1.35	2.8
88	1	0.5	3
89	0.95	1.5	3
	med klf4 cyto	med klf4 nuc	med ntc1 cyto
	0.4	0.5	0.75