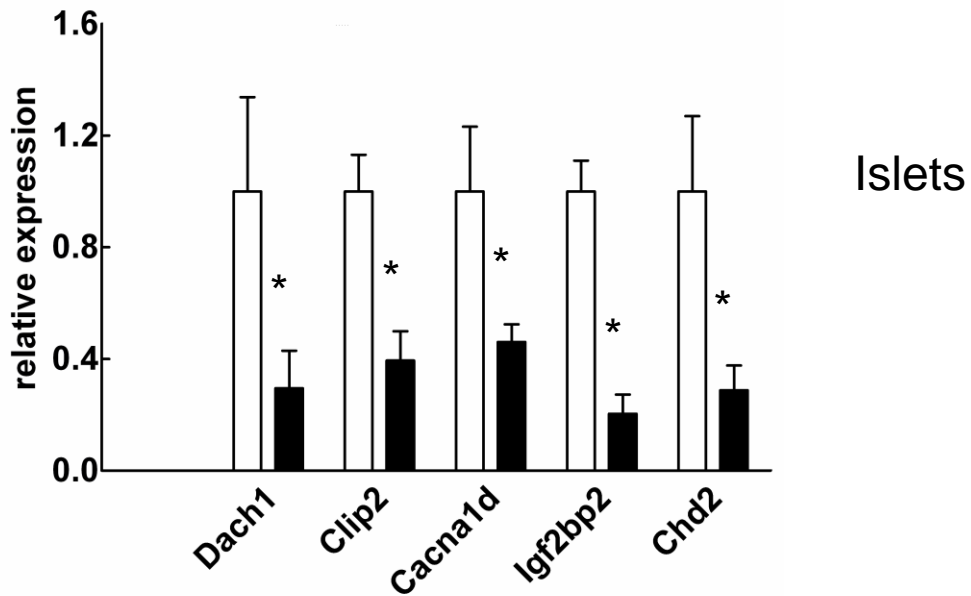
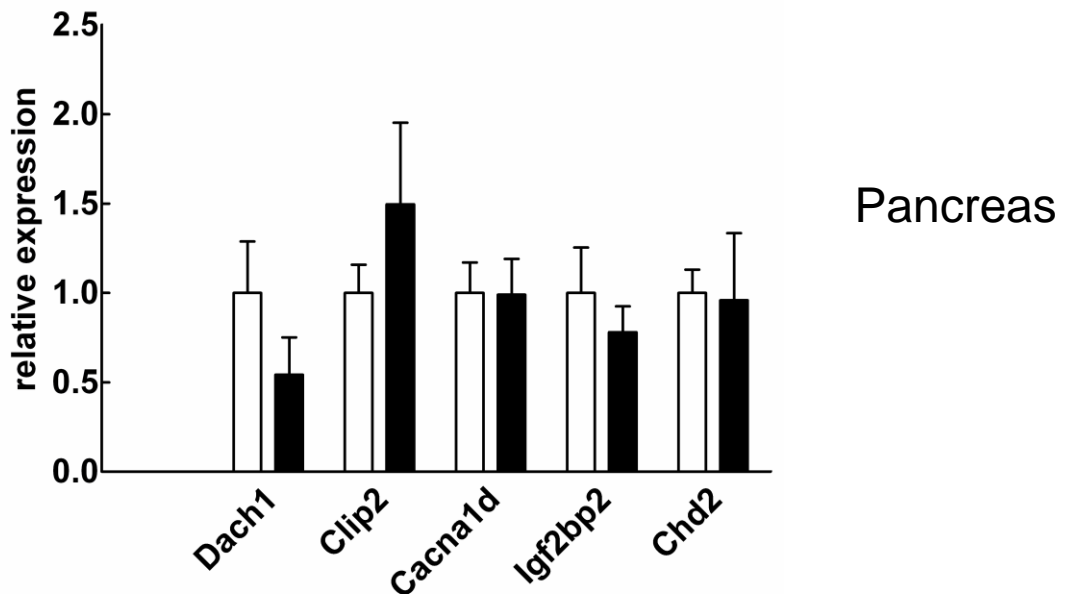


a**b****Electronic supplementary material**

ESM Fig. 4 Validation of differential expression by TaqMan quantitative real-time PCR. **a** Diet-induced changes (white bars, CHF diet; black bars, HF diet) in gene expression in LCM-isolated islets and **(b)** in total pancreas of mouse genes whose human orthologues were nominally associated with type 2 diabetes in two GWAs (DGI, WTCCC). Values are normalised to *Actb*. Data are mean \pm SE of five separate mice per group. * $p \leq 0.05$