

Online Appendix.

Supplemental Table 1.

Strain	Line	Proximal Out Marker	Proximal in Marker	Distal in Marker	Distal Out Marker	Maximum size of Congenic region
NOD.B10 <i>Idd9.1,2,3</i>	R28 (1104)	D4mit27	D4mit28	D4mit42	D4mit59	66.141 Mb
NOD.B10 <i>Idd9.2,3</i>	R11 (1105)	D4mit251	D4nds25	D4mit42	D4mit59	18.367 Mb
NOD.B10 <i>Idd9.1</i>	1565	D4mit200	D4mit258	D4mit339	rs27543340	18.407 Mb
NOD.B10 <i>Idd9.2</i>	1566	CD30_Distal-5	AL606963(TGCA)	Clstn1-RE	Pik3cd-RE	3.923 Mb
NOD.B10 <i>Idd9.3</i>	1106	D4mit127	AL606914(TGCA)	D4mit42	D4mit59	5.550 Mb

Novel Markers developed for this study:

Marker	Forward	Reverse	Comments
CD30_Distal-5	atggagagagtgaggcagga	ctgttcccaggtagccttga	
AL606963(TGCA)	atacccaaagcacccttg	ggtagactgctccaatgaaagg	
Clstn1-RE	gggtagcatcatcaggtcact	gggctccaacaacattctc	RFLP - Hpych4iv
Pik3cd-RE	acgcgactaatccaacc	agctgctcctctgtcctgtg	RFLP - Aci1
AL606914(TGCA)	agcatagcgttcacaggatg	tatttgcaagagggtcca	
rs27543340	ctgggtctgagaacctgaa	ttccctgatcactgcttcc	RFLP - HaeIII

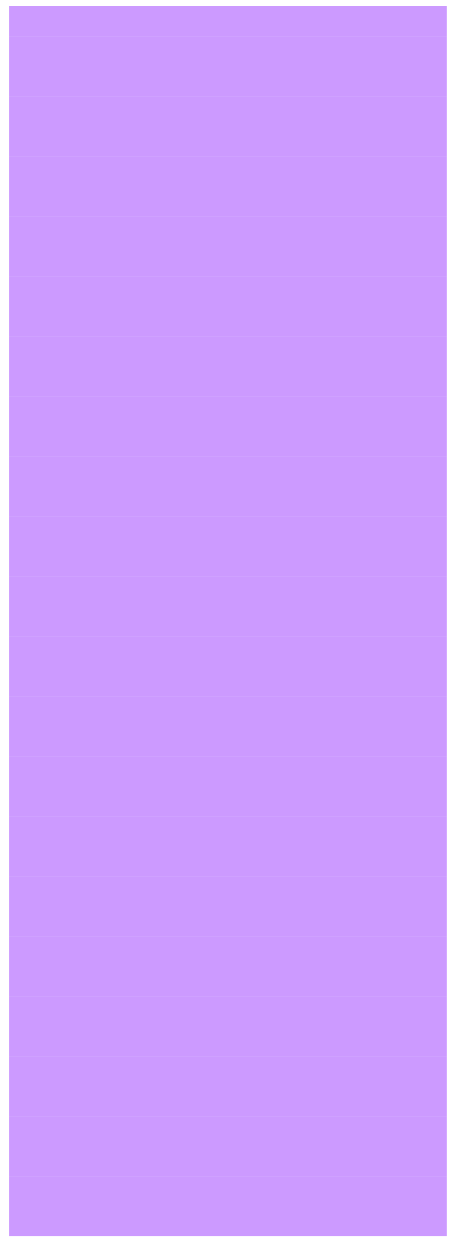
Supplemental Figure 1: List of the published NOD, B6 and B10 SNPs across the *Idd9.1* region, as defined by line 1565. SNP data for NOD, B6 and B10 strains was downloaded from the Mouse Phenome Project CGD1 strain data set for the *Idd9.1* regions as defined by line 1565 (<http://phenome.jax.org/pub-cgi/phenome/mpdcgi>). Only the SNPs with genotyping data were used, and not the imputed allele data. The SNP list is colored to show if the B6 or NOD SNP allele is the same (pink) or different (green) to the B10 reference strain. If a SNP is contained within a gene, then the gene name is listed – therefore, this is not a complete list of all the genes within the *Idd9.1* region. The distal boundary of strain R201 (Ueno et al, 2008) is shown; the proximal boundary is at 88.7 Mb, 27Mb above the line 1565 proximal boundary.

loc	rs	C57BL/10J	C57BL/6J	NOD/ShiLtJ	SNP location	
116.061271	rs27480460	A	A	A	Mast2:106484:intron:2:2936:38537	R201 as defined by Ueno, 2008 Strain extends up to 88.7 Mb (27 Mb more)
116.101701	rs32382933	G	G	G	Mast2:106484:intron:2:1309:38770	
116.144247	rs6178908	G	G	G	=	
116.144535	rs6193017	G	G	G	=	
116.232711	(liftover)	T	C	C	Gpbp111:54876:intron:1:2276:11333	
116.237722	rs6330601	G	G	G	Gpbp111:54876:intron:1:7287:11333	
116.237764	rs27480282	C	T	T	Gpbp111:54876:intron:1:7330:11333	
116.259251	rs27480249	G	A	A	Gpbp111:54876:intron:7:5202:5925	
116.357546	rs6389568	C	C	C	=	
116.403963	rs32380318	T	C	T	Tesk2:68353:intron:2:6649:16906	
116.41404	rs6215543	A	A	A	Tesk2:68353:intron:2:16726:16906	
116.414269	rs6216722	C	C	C	Tesk2:68353:exon:3:47:302	
116.422244	rs6249803	A	G	A	Tesk2:68353:intron:3:7720:9184	
116.439539	rs27513916	G	A	G	Tesk2:68353:intron:4:15706:20571	
116.439563	rs27513914	G	A	G	Tesk2:68353:intron:4:15730:20571	
116.44483	rs27513900	C	C	C	Tesk2:68353:intron:5:375:20237	
116.482027	rs6380671	A	A	A	Mutyh:102699:intron:1:1650:6546	
116.499355	rs27513773	T	T	T	=	
116.507673	rs32017389	T	T	G	=	
116.511586	rs27499654	G	G	G	=	
116.548417	rs31864219	A	A	G	=	
116.552469	rs6343877	G	G	G	Zswim5:44823:intron:1:1800:72760	
116.552547	rs6344034	T	T	T	Zswim5:44823:intron:1:1878:72760	
116.599648	rs27499551	T	T	T	Zswim5:44823:intron:1:48979:72760	
116.602142	rs27499541	T	T	T	Zswim5:44823:intron:1:51472:72760	
116.668683	rs13477932	A	A	A	Hectd3:50067:exon:2:130:159	
116.752159	rs32917848	G	G	G	Eif2b3:106448:intron:10:8765:10769	
116.755375	rs32213424	G	G	G	Eif2b3:106448:intron:11:1107:5025	
116.756923	rs27483579	A	A	A	Eif2b3:106448:intron:11:2655:5025	
116.780054	(liftover)	G	G	G	Ptch2:30443:intron:6:1317:1766	

116.789218	rs27531202	A	A	A	=
116.789248	rs33025215	A	A	A	=
116.813547	rs32407810	C	C	C	=
116.813832	rs32537100	A	A	A	=
116.837575	rs27512832	C	C	C	Kif2c:65896:intron:16:171:2470
116.838634	rs27512821	T	T	T	Kif2c:65896:intron:14:281:747
116.854233	rs27512755	T	T	T	Kif2c:65896:intron:1:801:1762
116.886588	rs32118410	T	T	T	=
116.88914	rs6378141	C	C	C	Gm1661:77500:intron:7:11757:12730
116.889656	rs27512674	T	T	T	Gm1661:77500:intron:7:11241:12730
116.89273	rs32993216	T	C	T	Gm1661:77500:intron:7:8168:12730
116.912026	rs32631548	C	T	C	Gm1661:77500:intron:2:782:2338
116.926469	rs32924038	C	C	C	=
116.92659	rs32059173	C	C	C	=
116.973268	rs32207557	A	A	A	4931406I20Rik:30439:intron:3:6882:7954
116.973981	rs32623996	G	G	G	4931406I20Rik:30439:intron:3:6169:7954
116.975324	rs6379244	C	C	C	4931406I20Rik:30439:intron:3:4826:7954
116.992888	rs27498063	T	T	T	4931406I20Rik:30439:intron:2:169305:181908
116.993054	rs27498062	C	C	C	4931406I20Rik:30439:intron:2:169139:181908
117.005681	rs27498017	C	C	C	4931406I20Rik:30439:intron:2:156512:181908
117.079803	rs27482013	T	T	T	4931406I20Rik:30439:intron:2:82390:181908
117.083415	rs3696331	A	A	A	4931406I20Rik:30439:intron:2:78778:181908
117.118941	rs27513105	T	T	T	4931406I20Rik:30439:intron:2:43252:181908
117.123492	rs27513078	C	C	C	4931406I20Rik:30439:intron:2:38701:181908
117.13865	rs32454974	G	T	G	4931406I20Rik:30439:intron:2:23543:181908
117.147003	rs33007209	C	T	C	4931406I20Rik:30439:intron:2:15190:181908
117.153274	rs27512993	G	G	G	4931406I20Rik:30439:intron:2:8918:181908
117.169847	rs3724818	G	A	G	=
117.170118	rs27512967	A	A	A	=
117.179121	rs32409639	C	C	C	=
117.191469	rs27512916	C	C	C	=
117.19988	rs6160489	T	T	T	=
117.245092	rs6172225	G	G	G	Prnpip1:37127:intron:3:7588:17700
117.245337	rs6173859	C	A	C	Prnpip1:37127:intron:3:7833:17700
117.247973	rs32012509	A	G	A	Prnpip1:37127:intron:3:10468:17700
117.248301	rs27497446	G	A	G	Prnpip1:37127:intron:3:10796:17700
117.260079	rs6294361	A	A	A	Prnpip1:37127:intron:4:4756:6379
117.262832	rs27497375	G	G	G	Prnpip1:37127:intron:5:1068:3911
117.26837	rs27497356	G	G	G	Prnpip1:37127:intron:6:2601:22004
117.271416	rs32445968	G	G	G	Prnpip1:37127:intron:6:5647:22004
117.273287	rs27497337	A	A	A	Prnpip1:37127:intron:6:7518:22004

117.276035	rs32016346	G	G	G
117.330774	rs32692203	G	A	G
117.351685	rs13477935	G	G	G
117.455453	rs33002652	C	T	C
117.582101	rs28272806	C	C	C
117.582168	rs28272804	A	A	A
117.628551	rs28256463	C	C	C
117.632717	rs6239826	A	A	A
117.632742	rs6239860	G	G	G
117.632802	rs6240325	G	G	G
117.656707	rs31968689	G	G	G
117.664998	rs3657829	A	A	A
117.683324	rs31950966	G	G	G
117.713788	rs32916077	A	A	A
117.713807	rs32171739	A	A	A
117.731712	rs27509954	G	G	G
117.737422	rs31911534	G	G	G
117.737531	rs27509907	C	C	C
117.741823	rs3672234	A	A	A
117.796008	rs27494049	A	A	A
117.823083	rs27494009	C	C	C
117.843313	rs32117298	G	G	G
117.846891	rs32988917	A	A	A
117.866514	rs33003885	C	C	C
117.866535	rs32522148	C	C	C
117.895406	rs27476717	A	G	A
117.913702	rs32287480	C	C	C
117.929757	rs6177771	T	T	T
117.929994	rs32219851	G	G	G
117.94106	rs32430335	C	C	C
117.942129	rs13477938	A	A	A
117.955227	rs6406931	G	G	G
117.955277	rs6309375	G	G	G
117.970005	rs27509819	G	A	G
117.970049	rs32461048	C	T	C
117.987422	rs27509785	C	T	C
117.992912	rs27509762	C	T	C
118.001479	rs27509741	C	T	C
118.045081	rs27495716	A	G	A
118.053776	rs27495626	C	A	C
118.053831	rs27495625	G	A	G

Prnpip1:37127:intron:6:10266:22004
Prnpip1:37127:intron:8:8762:24333
Dmap1:102687:intron:4:1762:4074
=
lpo13:36156:intron:2:2276:6188
lpo13:36156:intron:2:2209:6188
St3gal3:106414:intron:10:1487:16932
St3gal3:106414:intron:6:4216:4267
St3gal3:106414:intron:6:4192:4267
St3gal3:106414:intron:6:4132:4267
St3gal3:106414:intron:5:30601:50279
St3gal3:106414:intron:5:22310:50279
St3gal3:106414:intron:5:3985:50279
St3gal3:106414:intron:3:13466:22766
St3gal3:106414:intron:3:13447:22766
St3gal3:106414:intron:2:48440:52850
St3gal3:106414:intron:2:42730:52850
St3gal3:106414:intron:2:42621:52850
St3gal3:106414:intron:2:38329:52850
St3gal3:106414:intron:1:10985:26694
Jmjd2a:97911:intron:12:2711:4322
Jmjd2a:97911:intron:3:4844:5516
Jmjd2a:97911:intron:3:1266:5516
=
=
Ptpf:49074:intron:20:424:2616
Ptpf:49074:intron:7:7800:10888
Ptpf:49074:intron:6:336:8477
Ptpf:49074:intron:6:98:8477
Ptpf:49074:intron:5:720:11497
Ptpf:49074:exon:4:100:144
Ptpf:49074:intron:2:2149:7286
Ptpf:49074:intron:2:2099:7286
=
=
=
=
=
BC059842:75406:intron:59:39:106
BC059842:75406:intron:41:182:1056
BC059842:75406:intron:41:127:1056



118.068625	rs4139507	G	T	G
118.069134	rs27495572	C	T	C
118.079311	rs32546436	C	T	C
118.097128	rs31795463	C	G	C
118.098322	rs32895200	A	G	A
118.098896	rs32916814	C	T	C
118.103405	rs13473974	A	G	A
118.116039	rs13477939	G	G	G
118.116529	rs27478965	A	G	A
118.116969	rs27478961	C	C	C
118.153545	rs27478832	C	C	C
118.15539	rs6405612	G	G	G
118.155635	rs6407195	C	C	C
118.156089	rs27478806	C	T	C
118.185762	rs32772394	G	G	G
118.191788	rs31952445	C	C	C
118.191849	rs32739978	T	T	T
118.199266	rs27527898	T	C	T
118.200907	rs27527883	G	T	G
118.230239	rs27510982	T	C	T
118.232107	rs27510971	A	A	A
118.23358	rs27510965	T	A	T
118.246826	rs32547066	T	C	T
118.249352	rs6166868	T	C	T
118.249407	rs6166977	G	A	G
118.251554	(liftover)	C	C	C
118.280499	rs31832055	C	C	C
118.284442	rs31889787	C	T	C
118.284608	rs32637959	G	A	G
118.305214	rs27495057	C	C	C
118.307501	rs6271604	T	T	T
118.336406	rs6211147	A	A	A
118.336532	rs6212065	C	C	C
118.373471	rs31782320	G	A	G
118.377103	rs27478204	T	T	T
118.377425	rs27478197	C	T	C
118.38297	rs3719544	G	A	G
118.392192	rs32860353	C	C	C
118.402628	rs27527579	C	C	C
118.413742	rs3701948	T	T	T
118.4139	rs3702580	T	T	T

BC059842:75406:intron:7:1592:3581
 BC059842:75406:intron:7:1083:3581
 BC059842:75406:intron:1:2455:3609
 =
 =
 =
 Elov11:6557:exon:3:84:189
 Mpl:6556:exonUTR:12:246:1264
 Mpl:6556:intron:11:92:334
 Mpl:6556:intron:10:1686:1945
 Tie1:47421:intron:9:1314:1684
 Tie1:47421:exon:8:7:145
 Tie1:47421:intron:7:715:952
 Tie1:47421:intron:7:261:952
 =
 =
 =
 =
 2610528J11Rik:30261:intron:1:964:1860
 1110020C03Rik:71972:intron:22:4159:6883
 1110020C03Rik:71972:intron:22:2292:6883
 1110020C03Rik:71972:intron:22:818:6883
 1110020C03Rik:71972:intron:18:2352:4810
 1110020C03Rik:71972:intron:17:2588:2617
 1110020C03Rik:71972:intron:17:2532:2617
 1110020C03Rik:71972:intron:17:385:2617
 1110020C03Rik:71972:intron:5:2677:3883
 1110020C03Rik:71972:intron:4:1086:2142
 1110020C03Rik:71972:intron:4:920:2142
 =
 =
 =
 =
 =
 =
 =
 =
 =
 =
 =
 =
 =
 =
 =
 =

118.425231	rs27509428	C	C	C	=
118.453081	rs27509358	T	A	T	=
118.453345	rs27509354	T	A	T	=
118.503791	rs27494641	C	A	C	Olfr1333:106361:intron:1:4866:5618
118.605786	rs32816901	G	G	G	=
118.60585	rs27528210	T	T	T	=
118.641059	rs13477941	C	C	C	Lao1:25838:exonUTR:12:673:1106
118.641791	rs27510590	A	A	A	=
118.646792	rs27510564	G	G	G	=
118.647022	rs32635075	A	A	A	=
118.650034	rs32699358	T	T	T	=
118.653649	rs31839338	G	G	G	=
118.684494	rs32054914	C	C	C	=
118.68696	rs3661670	G	G	G	=
118.691525	rs27496312	C	C	C	=
118.691838	rs27496308	G	G	G	=
118.701238	rs33032918	A	A	A	=
118.740058	rs27479245	G	G	G	OTTMUSG0000008833:84312:intron:1:1508:12649
118.742477	rs32967840	C	C	C	=
118.74256	rs6154327	T	T	T	=
118.743578	rs27479235	C	C	C	=
118.753415	rs32807187	G	G	G	=
118.753447	rs32489955	G	G	G	=
118.768205	rs27479157	A	A	A	=
118.772075	rs33026184	T	T	T	=
118.775815	rs32072669	C	C	C	=
118.777918	rs32533831	G	G	G	=
118.77972	rs32870345	G	G	G	=
118.786034	rs27479113	T	T	T	Slc2a1:30398:intron:1:4455:11416
118.786059	rs32638978	A	A	A	Slc2a1:30398:intron:1:4480:11416
118.795575	rs32902414	G	G	G	Slc2a1:30398:intron:2:2483:11634
118.808868	rs27479051	C	C	C	Slc2a1:30398:exonUTR:10:17:1081
118.853712	rs6365760	G	A	G	Ermap:30396:intron:9:258:1143
118.854837	rs27526142	G	G	G	Ermap:30396:intron:8:610:1454
118.858571	rs27526117	C	A	C	Ermap:30396:intron:4:1129:1272
118.870438	rs32624757	G	G	G	Ccdc23:106345:intron:2:1811:2736
118.878775	rs32883145	A	A	A	4930538K18Rik:30394:intron:6:3045:3420
119.061002	rs27475748	T	T	T	1700041C02Rik:63642:intron:5:5143:33803
119.090912	rs27521341	G	G	G	=
119.098105	rs31950888	T	T	T	Zmynd12:94819:intron:1:2504:10952
119.125725	rs32582454	C	C	C	Zmynd12:94819:intron:7:2719:3169

119.132781	rs31750346	G	G	G	=
119.133493	rs32937142	C	C	C	=
119.138138	rs27505954	G	G	G	BC057371:49994:exonUTR:5:2991:3236
119.138435	rs33001150	T	T	T	BC057371:49994:exonUTR:5:2695:3236
119.145461	rs27505926	C	C	C	BC057371:49994:intron:3:1661:3846
119.150852	rs27505911	T	T	T	BC057371:49994:intron:1:14049:14274
119.169968	rs27505889	T	T	T	=
119.172764	rs31853681	C	C	C	=
119.176268	rs27505861	A	A	A	=
119.189081	rs31772521	C	C	C	=
119.247096	rs32413709	G	G	G	Foxj3:44564:intron:3:689:11947
119.247179	rs32734730	C	C	C	Foxj3:44564:intron:3:772:11947
119.255532	rs27505684	T	T	T	Foxj3:44564:intron:3:9125:11947
119.255559	rs32480646	G	G	G	Foxj3:44564:intron:3:9152:11947
119.281234	rs32637963	G	G	G	Foxj3:44564:intron:5:6135:7496
119.281797	rs32954116	A	A	A	Foxj3:44564:intron:5:6698:7496
119.282209	rs32239952	T	T	T	Foxj3:44564:intron:5:7110:7496
119.286933	rs33024239	C	C	C	Foxj3:44564:intron:6:4236:6415
119.294095	rs32918253	T	T	T	Foxj3:44564:intron:9:1141:1251
119.328765	rs27490511	A	A	A	=
119.329273	rs4224736	G	G	G	Guca2b:44426:exonUTR:3:181:226
119.329979	rs27490504	G	G	G	Guca2b:44426:intron:2:154:676
119.334686	rs33891565	T	T	T	=
119.353352	rs28334593	A	A	A	=
119.358143	rs28334554	C	C	C	=
119.389297	rs28252761	C	C	C	=
119.394012	rs3688968	A	A	A	=
119.39421	rs28252715	T	T	T	=
119.397219	rs3676847	C	C	C	=
119.409645	rs32977054	G	G	G	=
119.416842	rs32512018	T	T	T	=
119.416868	rs32418173	A	A	A	=
119.439981	rs3676600	G	G	A	=
119.443211	rs13477943	A	A	G	=
119.443872	rs6329127	A	A	A	=
119.476429	rs33011513	C	C	C	=
119.489574	rs6180597	T	T	T	Hivep3:30383:intron:1:2177:182381
119.498763	rs27515976	G	G	G	Hivep3:30383:intron:1:11366:182381
119.514829	rs3684040	G	G	G	Hivep3:30383:intron:1:27432:182381
119.514887	rs3684575	G	G	G	Hivep3:30383:intron:1:27490:182381
119.530937	rs27515881	T	T	T	Hivep3:30383:intron:1:43541:182381

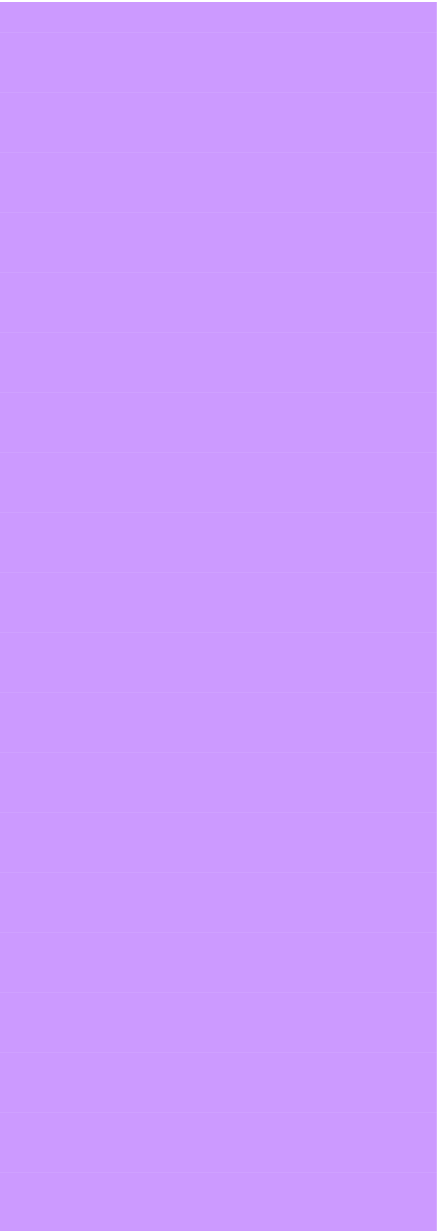
119.544652	rs27502013	C	C	C	Hivep3:30383:intron:1:57255:182381
119.544731	rs27502012	C	C	T	Hivep3:30383:intron:1:57334:182381
119.553333	rs31830486	G	G	G	Hivep3:30383:intron:1:65936:182381
119.55801	rs31820196	A	A	A	Hivep3:30383:intron:1:70613:182381
119.558347	rs27501990	G	G	A	Hivep3:30383:intron:1:70950:182381
119.568353	rs27501964	T	T	T	Hivep3:30383:intron:1:80956:182381
119.569334	rs27501955	C	C	C	Hivep3:30383:intron:1:81937:182381
119.569651	rs27501951	C	C	A	Hivep3:30383:intron:1:82254:182381
119.587147	rs13477944	G	G	G	Hivep3:30383:intron:1:99750:182381
119.607754	rs27501819	T	T	G	Hivep3:30383:intron:1:120357:182381
119.608163	rs27501814	A	A	T	Hivep3:30383:intron:1:120766:182381
119.612776	rs27486166	C	C	A	Hivep3:30383:intron:1:125379:182381
119.617348	rs27486143	G	G	A	Hivep3:30383:intron:1:129951:182381
119.620784	rs32710583	A	A	G	Hivep3:30383:intron:1:133387:182381
119.625692	rs31791774	G	G	G	Hivep3:30383:intron:1:138295:182381
119.63371	rs27486097	G	G	T	Hivep3:30383:intron:1:146313:182381
119.642224	rs27486058	T	T	T	Hivep3:30383:intron:1:154827:182381
119.64412	rs27486054	C	C	C	Hivep3:30383:intron:1:156723:182381
119.736221	rs32823296	A	A	A	Hivep3:30383:intron:2:66362:67613
119.737568	rs32131195	T	T	T	Hivep3:30383:UTR:3:95:195
119.737587	rs32379758	C	C	C	Hivep3:30383:UTR:3:114:195
119.751307	rs6401858	G	G	G	Hivep3:30383:intron:3:13638:28898
119.751327	rs6401898	A	A	G	Hivep3:30383:intron:3:13657:28898
119.754588	rs27517258	A	A	G	Hivep3:30383:intron:3:16918:28898
119.769727	rs6206730	C	C	C	Hivep3:30383:exon:6:289:2618
119.887355	rs27487288	G	G	A	=
119.887408	rs27487287	T	T	C	=
119.897521	rs27487207	A	A	C	=
119.901732	rs3699269	C	C	C	=
119.930366	rs32431221	A	A	A	=
119.930529	rs32048286	A	A	C	=
119.93727	rs32672455	C	C	T	=
119.952773	rs6210697	A	A	A	Foxo6:63846:intron:1:6669:17654
119.953136	rs6375399	A	A	A	Foxo6:63846:intron:1:6306:17654
119.970739	rs32080294	T	T	C	=
119.981421	rs3712685	G	G	G	=
119.981621	rs3713987	C	C	C	=
120.028961	rs31896051	C	C	T	=
120.031639	rs32670818	A	A	G	=
120.05999	rs32263942	C	C	T	=
120.12846	rs31834963	A	A	T	Scmh1:64991:intron:4:2078:8235

120.128636	rs32318541	G	G	T	Scmh1:64991:intron:4:2255:8235
120.142644	rs28272539	T	T	C	Scmh1:64991:intron:7:1569:9531
120.148307	rs32697977	G	G	A	Scmh1:64991:intron:7:7232:9531
120.148325	rs6249611	T	T	G	Scmh1:64991:intron:7:7250:9531
120.158729	rs6319522	A	A	G	Scmh1:64991:intron:9:2289:21448
120.198057	rs28256802	A	A	G	Scmh1:64991:intron:15:387:3090
120.198096	rs31866291	C	C	T	Scmh1:64991:intron:15:426:3090
120.233523	rs28256652	T	T	T	Ctps:30381:intron:5:479:2527
120.246957	rs28256625	C	C	C	=
120.247019	rs28256624	A	A	A	=
120.249794	rs32625362	G	G	G	=
120.25673	rs32572768	G	G	G	=
120.25678	rs28256584	A	A	G	=
120.291581	rs6153340	C	C	C	=
120.294122	rs27516443	C	C	T	=
120.324782	rs32768013	G	G	G	=
120.332559	rs27516360	C	C	C	=
120.342858	rs32632298	G	G	A	=
120.345488	rs32292070	C	C	G	=
120.384482	rs27516187	G	G	A	Kcnq4:30376:intron:8:1133:1625
120.390675	rs27499949	C	C	C	Kcnq4:30376:intron:1:28788:29309
120.400008	rs6372607	G	G	G	Kcnq4:30376:intron:1:19455:29309
120.43416	rs27499799	T	T	T	Nfyc:43429:intron:8:71:2234
120.476824	rs3708694	A	A	G	Nfyc:43429:intron:1:21310:35039
120.479153	rs27499696	T	T	C	Nfyc:43429:intron:1:18981:35039
120.48701	rs27499683	G	G	G	Nfyc:43429:intron:1:11124:35039
120.495767	rs27485863	A	A	C	Nfyc:43429:intron:1:2367:35039
120.501524	rs32783948	G	G	A	=
120.558713	rs31845867	T	T	G	Rims3:71093:intron:4:2891:3716
120.559222	rs32380821	T	T	C	Rims3:71093:intron:4:3399:3716
120.559821	rs27485679	G	G	A	Rims3:71093:intron:5:172:1943
120.564307	rs32220959	C	C	T	Rims3:71093:exonUTR:8:406:506
120.569719	rs32993097	T	T	A	=
120.590787	rs32601116	G	G	A	=
120.603306	rs32505326	T	T	C	Zfp69:60000:exonUTR:6:804:1368
120.646569	rs32038056	G	G	G	Smap1l:43200:intron:7:420:1126
120.668573	rs32638068	A	A	A	Smap1l:43200:intron:1:20779:31418
120.691835	rs13477947	T	T	C	=
120.691998	rs32736006	G	G	A	=
120.692038	rs32747863	A	A	T	=
120.726781	rs6337795	A	T	A	Col9a2:30372:intron:30:217:293



120.72698	rs6338910	A	A	A
120.731449	rs3675629	A	C	A
120.785977	rs31831126	C	T	C
120.825717	rs6165780	C	C	C
120.826347	rs6169181	G	G	G
120.875375	rs13477948	G	G	G
120.911498	rs27484327	A	C	A
120.912467	rs32311574	C	T	C
120.956746	rs33031811	T	C	T
121.036609	rs27484207	C	T	C
121.069749	rs27484134	T	A	T
121.181905	rs31878303	G	A	G
122.296306	rs28273796	A	A	C
122.326261	rs28273777	T	T	A
122.39734	rs28273736	A	A	G
122.397886	rs28273733	A	A	G
122.400133	rs28273720	T	T	G
122.403764	rs32858367	C	C	T
122.489244	rs3702881	A	A	G
122.519569	rs32332434	G	G	G
122.52333	rs28258257	C	T	C
122.527913	rs28258229	C	T	C
122.536809	rs28258182	C	T	C
122.543559	rs28258159	A	G	A
122.563936	rs28258105	C	A	C
122.589106	rs6377447	T	T	T
122.633615	rs6220300	C	T	C
122.649743	rs6286451	T	T	T
122.65011	rs6301491	A	A	A
122.651149	rs27567064	G	G	G
122.680701	rs6271907	A	A	A
122.683186	rs27567036	C	G	C
122.811425	rs27552059	A	A	A
122.848211	rs32558312	A	G	G
122.862471	rs27551881	C	G	G
122.86306	rs27551879	A	G	G
122.893996	rs6375670	C	T	T
122.894046	rs6375748	G	G	G
122.903847	rs27532819	C	T	T
122.943401	rs27532761	G	A	G
122.980182	rs27585557	G	G	G

Col9a2:30372:intron:31:44:264	
=	
=	
Rlf:56635:intron:7:1743:3832	
Rlf:56635:intron:7:1113:3832	
Rlf:56635:intron:1:12064:24575	
=	
=	
=	
=	
=	
=	
=	
=	
=	
Ppt1:97901:intron:5:44:2389	
Ppt1:97901:intron:6:2134:5054	
Cap1:69533:exonUTR:13:650:1169	
Cap1:69533:intron:6:1168:2208	
=	
=	
Mfsd2:30408:intron:3:359:4601	
=	
=	
=	
=	
Ppie:30404:intron:6:872:1696	
=	
Hpcal4:59667:intron:2:1371:4856	
Hpcal4:59667:intron:2:1959:4856	
=	
=	
=	
=	



123.013561	rs32980042	C	C	G	Bmp8a:40496:intron:1:6065:17093
123.0269	rs27568952	T	T	C	=
123.039561	rs27568894	C	C	C	Macf1:84301:intron:97:1738:3028
123.04726	rs27568874	C	C	A	Macf1:84301:intron:91:567:615
123.04775	rs27568869	C	C	C	Macf1:84301:intron:91:78:615
123.061215	rs27568819	G	G	A	Macf1:84301:intron:73:672:1220
123.061701	rs31955955	C	C	T	Macf1:84301:intron:73:186:1220
123.061745	rs31939471	G	G	G	Macf1:84301:intron:73:141:1220
123.115527	rs27553626	G	G	C	Macf1:84301:intron:58:181:3269
123.120412	rs6159638	T	T	T	Macf1:84301:intron:54:1664:3168
123.17867	rs6277874	G	G	G	Macf1:84301:intron:20:735:2137
123.178815	rs6278429	C	C	C	Macf1:84301:intron:20:590:2137
123.179254	rs13477954	A	A	T	Macf1:84301:intron:20:152:2137
123.247392	rs6215420	G	G	G	Macf1:84301:intron:1:113819:129602
123.247413	rs6215445	C	C	C	Macf1:84301:intron:1:113798:129602
123.311252	rs6200549	A	A	A	Macf1:84301:intron:1:49959:129602
123.328903	rs6299331	G	G	G	Macf1:84301:intron:1:32309:129602
123.329237	rs6301018	G	G	G	Macf1:84301:intron:1:31974:129602
123.351432	rs6196829	T	T	T	Macf1:84301:intron:1:9779:129602
123.353724	rs27568165	G	G	A	Macf1:84301:intron:1:7488:129602
123.362284	rs31922214	C	C	T	=
123.362734	rs32419013	G	G	A	=
123.367331	rs32785483	A	A	A	=
123.481039	rs27552838	T	T	T	=
123.481094	rs27552836	T	T	G	=
123.483516	rs27552823	A	A	G	=
123.48816	rs27552814	G	G	G	=
123.496718	rs31781739	C	C	C	=
123.499983	rs32440379	A	A	G	=
123.500111	rs32451467	T	T	G	=
123.511044	rs31820144	G	G	G	=
123.522811	rs32198095	T	T	T	=
123.538006	rs13477956	A	A	A	4933427I04Rik:97896:exonUTR:1:1083:1526
123.550206	rs27534074	C	C	C	=
123.572903	rs27534001	T	T	T	ENSMUSG00000073760:97894:exon:1:230:305
123.572998	rs27533999	C	C	C	=
123.623913	rs3682864	A	A	A	=
123.742458	rs27567169	A	A	A	=
123.742614	rs3656522	G	G	A	=
123.749342	rs6285698	A	A	A	=
123.843059	rs6195490	T	T	C	=

123.843127	rs6196005	A	A	T	=
123.851747	rs27529837	G	G	T	=
123.851885	rs27529836	A	A	G	=
123.857178	rs32413742	T	T	G	=
123.863756	rs6245239	A	A	G	=
123.873196	rs13477959	G	G	A	=
123.885164	rs3714811	G	G	A	=
123.887326	rs32467939	T	T	C	=
123.899226	rs3666419	A	A	G	=
123.92438	rs6412828	T	T	G	=
123.931233	rs27569802	A	A	A	=
123.9335	rs32782394	C	C	T	=
123.96349	rs3089780	A	A	T	=
123.983078	rs3678760	A	A	T	=
123.98319	rs3679435	C	C	T	=
124.007755	rs31753552	C	C	T	=
124.009626	rs32385238	G	G	G	=
124.015445	rs27554175	A	A	G	=
124.026093	rs32356536	G	G	A	=
124.038026	rs6198954	T	T	C	=
124.084324	rs27536730	G	G	A	=
124.109508	rs32703791	G	G	G	=
124.127494	rs27586424	C	C	C	=
124.13123	rs3695420	T	T	T	=
124.131258	rs3695476	T	T	T	=
124.140375	rs32006033	G	G	G	=
124.151372	rs27586384	A	A	A	=
124.164696	rs27570439	A	A	A	=
124.166566	rs27570424	T	T	T	=
124.184113	rs6264989	T	T	T	=
124.188462	rs27570331	T	T	T	=
124.191047	rs27570309	T	T	T	=
124.196614	rs27570267	C	C	C	=
124.286126	rs27555534	A	A	C	=
124.307734	rs27538359	A	A	G	=
124.311081	rs6304079	G	G	C	=
124.311705	rs32174150	A	A	T	=
124.312047	rs27538339	T	T	C	=
124.312962	rs27538328	A	A	C	=
124.364541	rs3717052	G	G	A	=
124.370918	rs27585823	G	G	G	=

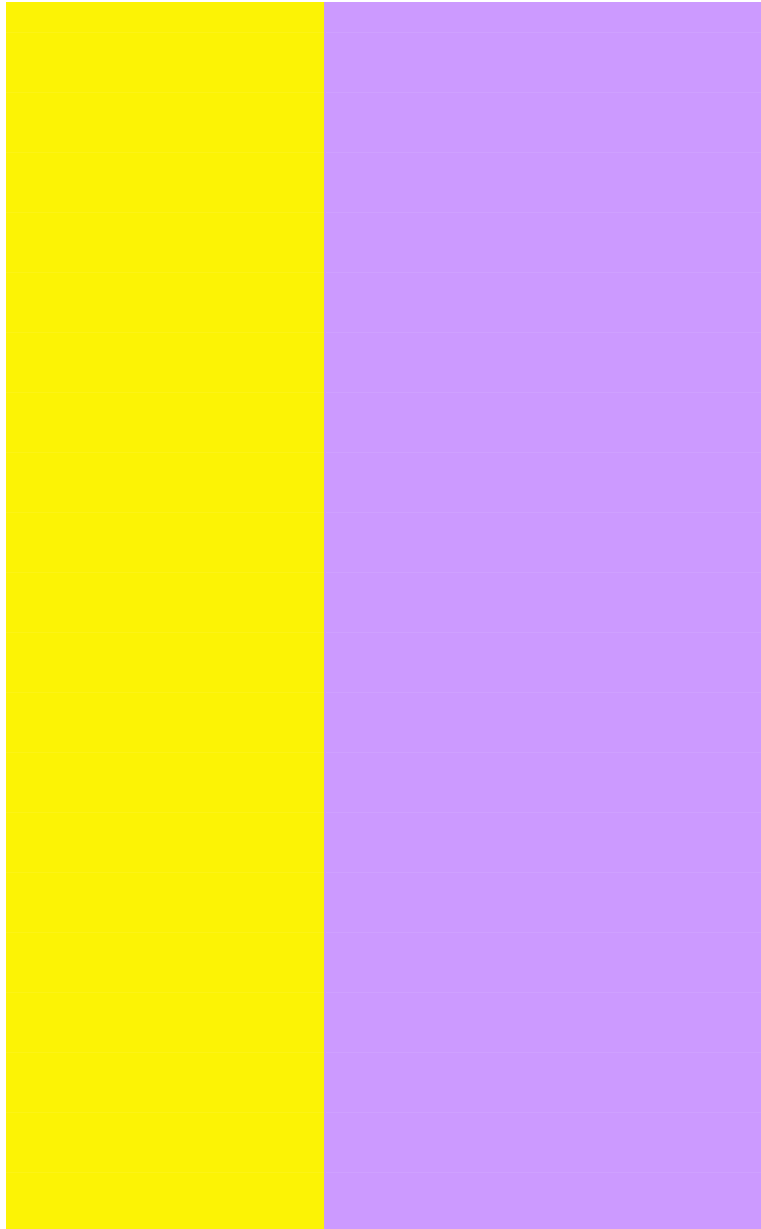
Utp11l:30738:intron:1:6142:7287

124.371021	rs27585821	A	A	G	=	
124.486851	rs31958723	A	A	G	Mtf1:106191:intron:3:4490:15088	
124.490366	rs3726196	C	C	C	Mtf1:106191:intron:3:8006:15088	
124.493929	rs3716174	A	A	A	Mtf1:106191:intron:3:11569:15088	
124.500263	rs27534726	C	C	C	Mtf1:106191:intron:5:1658:2925	
124.508607	rs27534675	C	C	C	Mtf1:106191:intron:8:165:6500	
124.515085	rs33863605	A	A	A	Mtf1:106191:intron:9:39:516	
124.530543	rs32918420	T	T	C	Yrdc:30720:intron:3:1279:1853	
124.534545	rs6191300	A	A	G	Gm50:106186:intron:4:1828:1890	
124.59312	rs6345428	C	C	C	=	
124.59319	rs6345952	T	T	T	=	
124.619519	rs6296380	C	C	C	9930104L06Rik:94769:intron:3:1728:1805	
124.620161	rs6312696	T	T	T	9930104L06Rik:94769:exonUTR:5:333:2077	
124.627203	rs6327393	C	C	C	=	
124.64566	rs6169623	T	T	C	=	
124.645749	rs6170174	C	C	C	=	
124.86632	rs27581607	A	A	G	=	
124.875899	rs32623165	G	G	A	=	
124.87719	rs27581600	A	A	C	=	
124.883823	rs27565661	G	G	A	=	
124.900442	rs3716393	A	A	G	=	
124.904157	rs32042685	A	A	C	=	
124.908774	rs27565525	T	T	C	=	
124.908795	rs27565524	T	T	G	=	
124.919886	rs6276600	A	A	A	=	
124.920531	rs32170902	C	C	T	=	
124.932401	rs27565410	C	C	T	=	
124.99406	rs27530188	C	C	G	=	
125.005507	rs27530118	T	T	T	=	
125.005578	rs33013895	C	C	C	=	
125.013388	rs32393049	C	C	C	=	
125.032155	rs27529992	T	T	T	=	
125.041997	rs27587895	C	C	C	=	
125.046633	rs3715407	A	A	G	=	
125.123455	rs6180841	T	T	T	=	
125.132841	rs6251391	G	G	G	=	
125.137399	rs27554714	A	A	A	=	
125.139487	rs32178972	A	A	A	=	
125.17433	rs31901521	T	T	C	Grik3:30676:intron:1:6139:132533	
125.174956	rs32506810	C	C	T	Grik3:30676:intron:1:6765:132533	

Idd11 as defined by Brodnicki, 2005

125.193626	rs27537025	T	T	C
125.193739	rs27537024	T	T	T
125.19917	rs6159163	A	A	A
125.199473	rs6160860	G	G	G
125.226562	rs27566555	G	G	G
125.289479	rs27551170	C	C	T
125.301671	rs27551144	G	G	G
125.316429	rs33026455	A	A	A
125.317022	rs27551044	T	T	T
125.323823	rs27551001	C	C	G
125.328258	rs6256474	G	G	G
125.361544	rs27530479	G	G	A
125.390184	rs27530308	T	T	T
125.461956	(liftover)	C	C	C
125.485262	rs32914111	A	A	A
125.488431	rs32381686	G	G	G
125.488604	rs31915302	G	G	G
125.529754	rs32722472	C	C	C
125.531285	rs27551435	G	G	G
125.531436	rs27551433	G	G	G
125.539262	rs27551396	C	C	G
125.553542	rs32489440	C	C	C
125.558066	rs27551286	G	G	G
125.637731	rs33027037	T	T	T
125.638134	rs31799232	A	A	A
125.642362	rs6367051	T	T	G
125.642446	rs6367586	G	G	A
125.64911	rs27566174	G	G	T
125.675878	rs27566074	G	A	G
125.762193	rs27550222	C	C	T
125.782416	rs32714443	G	G	G
125.79626	rs27550114	G	A	G
125.799976	rs27550099	T	C	T
125.858137	rs27528652	A	A	A
125.86479	rs3720461	A	A	G
125.866946	rs27528639	A	A	G
125.866971	rs6268189	T	T	A
125.877121	rs31774471	G	G	G
125.877752	rs32804090	A	A	G
125.880438	rs27528626	C	C	T
125.881076	rs32561539	A	A	A

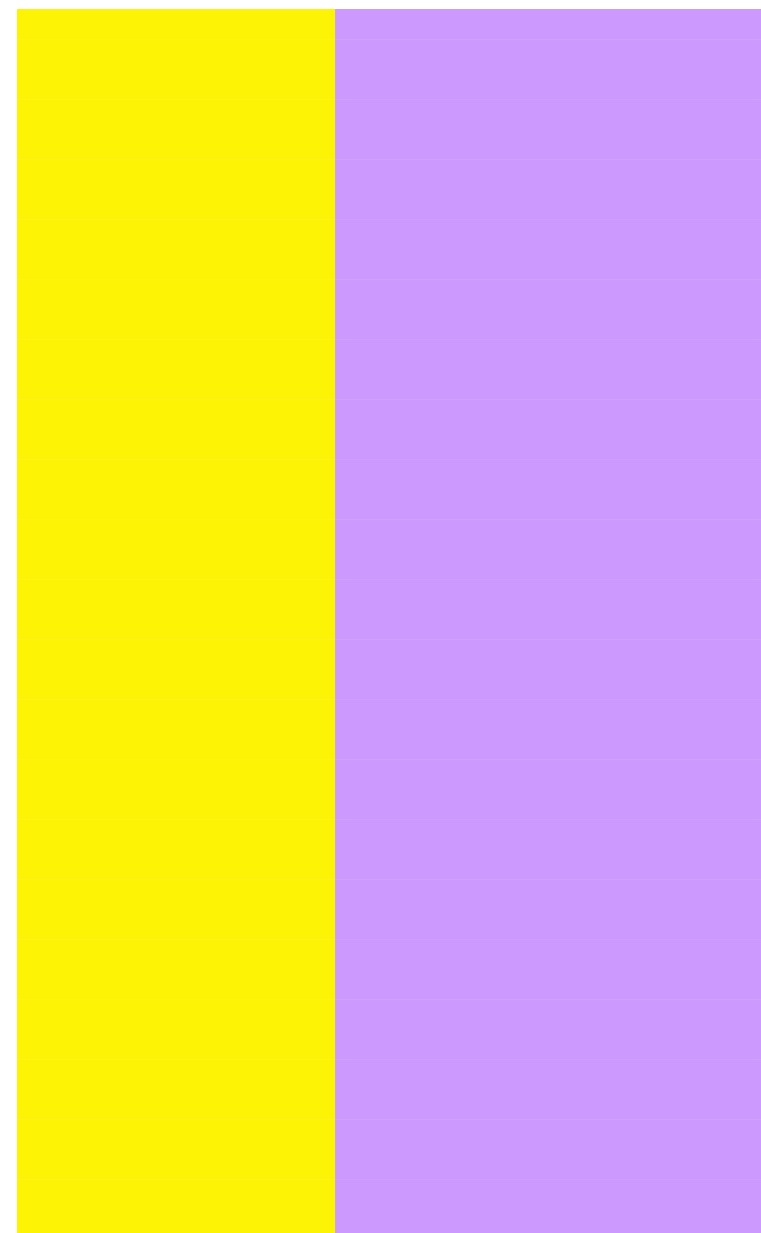
Grik3:30676:intron:1:25435:132533
Grik3:30676:intron:1:25548:132533
Grik3:30676:intron:1:30979:132533
Grik3:30676:intron:1:31282:132533
Grik3:30676:intron:1:58371:132533
Grik3:30676:intron:1:121288:132533
Grik3:30676:intron:2:769:8609
Grik3:30676:intron:3:6659:6754
Grik3:30676:intron:4:315:2080
Grik3:30676:intron:5:4981:8080
Grik3:30676:intron:7:421:5694
Grik3:30676:intron:10:13543:15235
=
=
=
=
=
=
=
=
=
=
=
=
=
=
=
=
=
=
1810007P19Rik:106156:intron:8:485:2079
Stk40:35441:intron:1:1024:19567
Stk40:35441:intron:1:14868:19567
Stk40:35441:intron:1:18584:19567
Thrap3:80919:intron:2:5540:5618
Thrap3:80919:intron:1:15022:15979
Thrap3:80919:intron:1:12866:15979
Thrap3:80919:intron:1:12841:15979
Thrap3:80919:intron:1:2691:15979
Thrap3:80919:intron:1:2060:15979
=
=



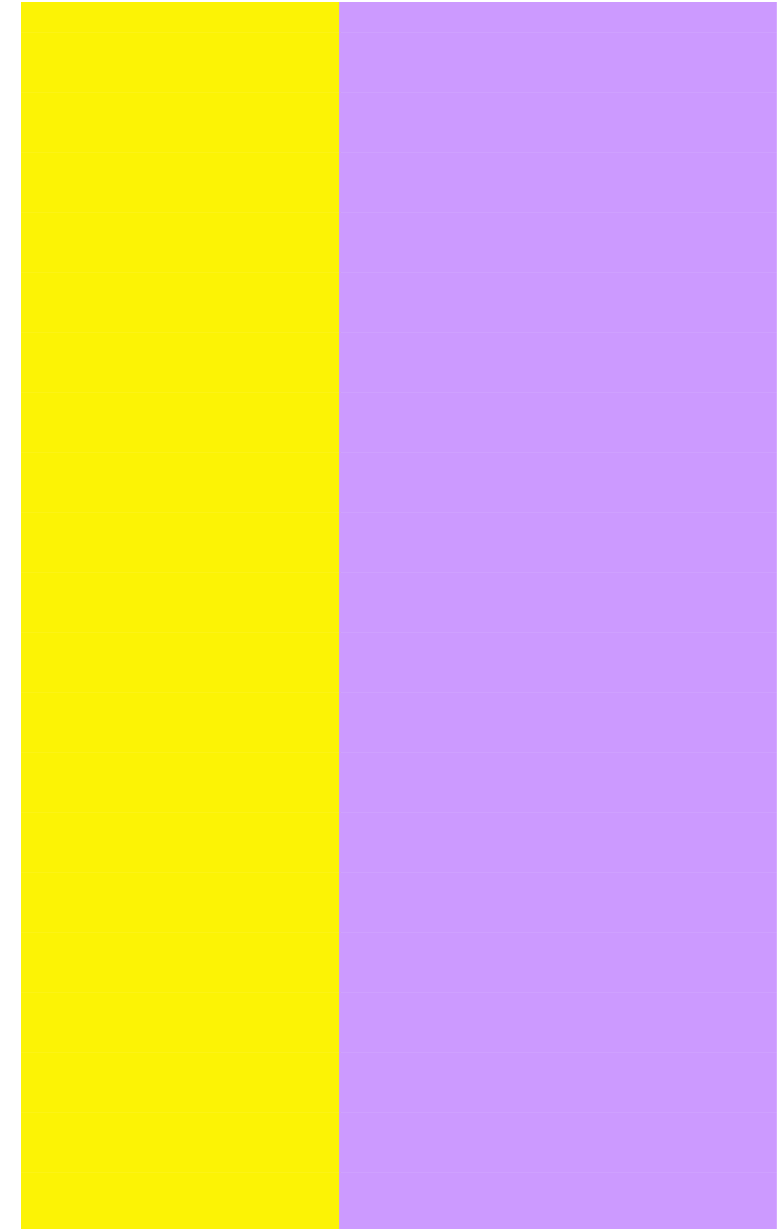
125.927679	rs6211332	T	T	A
125.932294	rs32984816	A	A	G
125.944354	rs27528517	C	C	C
125.945109	rs32582148	A	A	A
125.950425	rs32834219	C	C	C
125.950502	rs6407768	T	T	T
125.950522	rs6407804	C	C	C
125.991071	rs4224765	A	G	G
126.020905	rs27564114	G	G	G
126.021489	rs6399039	A	G	G
126.031894	rs27564096	C	T	C
126.060638	rs27564041	C	C	C
126.123743	rs27548175	G	A	G
126.124234	rs32761879	C	T	C
126.132398	rs27548129	G	A	A
126.132445	rs27548128	G	G	G
126.15009	rs3666537	A	A	A
126.184048	rs27547982	G	A	A
126.187973	rs27523061	G	A	G
126.245361	rs27522897	T	T	T
126.248184	rs32921003	C	C	C
126.291323	rs27579527	G	G	G
126.307352	rs6168872	G	A	A
126.336695	rs31836315	G	G	G
126.33694	rs27564709	A	G	G
126.346841	rs31796444	G	A	G
126.379005	rs32324099	C	T	C
126.38935	rs13477965	G	G	A
126.394525	rs3692521	G	A	G
126.511318	rs6272864	G	T	T
126.51151	rs6286262	T	G	G
126.511791	rs6287843	C	T	T
126.514067	rs6221068	G	A	G
126.58804	rs6250665	A	G	G
126.681651	rs6360798	G	A	A
126.685625	rs6171443	G	A	G
126.730353	rs32234036	A	A	A
126.784546	rs32650709	G	A	G
126.785943	rs6377633	T	G	G
126.785992	rs27565946	G	G	A
126.786031	rs32826851	A	A	C

Mtap7d1:61143:intron:1:5580:13648
Mtap7d1:61143:intron:1:965:13648
Trappc3:30660:intron:1:4571:10138
Trappc3:30660:intron:1:5326:10138
Trappc3:30660:intron:3:106:813
Trappc3:30660:intron:3:183:813
Trappc3:30660:intron:3:203:813
=
=
=
Eif2c3:69097:intron:13:355:1232
Eif2c3:69097:intron:5:19769:26122
Eif2c1:97888:intron:12:2266:5524
Eif2c1:97888:intron:12:1776:5524
Eif2c1:97888:intron:8:3954:4683
Eif2c1:97888:intron:8:3907:4683
=
Eif2c2:84285:exon:18:73:133
Eif2c2:84285:intron:14:688:1181
Clspn:48391:intron:8:1535:5696
Clspn:48391:intron:8:4358:5696
=
=
=
=
Psmb2:30642:intron:3:14661:18957
=
Tcfap2e:48194:intron:6:2129:2614
AU040320:102607:intron:9:1850:3247
AU040320:102607:intron:9:2043:3247
AU040320:102607:intron:9:2324:3247
AU040320:102607:intron:11:63:527
Zmym4:106108:exon:9:206:211
=
=
Zmym1:106099:intron:4:1097:2780
Zmym6:46751:intron:11:578:1823
Zmym6:46751:exon:12:151:167
Zmym6:46751:intron:12:31:1207
Zmym6:46751:intron:12:70:1207

127.045833	(liftover)	C	C	C	=
127.045902	rs27578319	C	C	A	=
127.050028	rs27578301	C	C	T	=
127.054398	rs3704331	A	A	G	=
127.061527	rs27563851	G	A	G	=
127.06846	rs27563824	G	A	A	=
127.072972	rs27563806	G	A	A	=
127.074545	rs13477968	G	A	A	=
127.106078	rs27547962	T	C	T	=
127.114876	rs6221897	C	C	C	=
127.120206	rs32507597	G	A	A	=
127.125188	rs32273307	T	G	G	=
127.172004	rs6302571	G	G	G	=
127.175747	rs6372177	G	G	G	=
127.375661	rs6329688	C	C	C	=
127.44453	rs6275002	G	G	G	=
127.677707	rs27524020	A	G	G	Csmd2:97884:intron:1:12190:70689
127.685735	rs3717809	G	A	A	Csmd2:97884:intron:1:20218:70689
127.686526	rs28309408	T	G	T	Csmd2:97884:intron:1:21010:70689
127.696743	rs28289539	C	A	A	Csmd2:97884:intron:1:31227:70689
127.697254	rs31985979	T	C	C	Csmd2:97884:intron:1:31737:70689
127.709312	rs28289481	A	G	G	Csmd2:97884:intron:1:43795:70689
127.719413	rs28289453	A	G	G	Csmd2:97884:intron:1:53896:70689
127.755328	rs32654434	C	T	C	Csmd2:97884:intron:2:18904:54470
127.760066	rs28274538	C	C	C	Csmd2:97884:intron:2:23642:54470
127.761405	rs32059643	G	G	G	Csmd2:97884:intron:2:24981:54470
127.764706	rs28274490	G	A	G	Csmd2:97884:intron:2:28282:54470
127.773976	rs28274420	A	A	A	Csmd2:97884:intron:2:37553:54470
127.777181	rs28274403	C	C	C	Csmd2:97884:intron:2:40758:54470
127.777334	rs28274401	G	G	G	Csmd2:97884:intron:2:40911:54470
127.784008	rs31801882	C	G	G	Csmd2:97884:intron:2:47584:54470
127.79316	rs32357801	T	C	C	Csmd2:97884:intron:3:2152:83437
127.793617	rs6360227	A	A	A	Csmd2:97884:intron:3:2609:83437
127.79999	rs6209106	A	A	A	Csmd2:97884:intron:3:8982:83437
127.800027	rs6209177	C	C	C	Csmd2:97884:intron:3:9019:83437
127.808404	rs28258936	A	A	G	Csmd2:97884:intron:3:17396:83437
127.810066	rs3721916	A	A	A	Csmd2:97884:intron:3:19057:83437
127.819923	rs28258875	C	C	T	Csmd2:97884:intron:3:28914:83437
127.828986	rs28258811	T	T	C	Csmd2:97884:intron:3:37978:83437
127.829025	rs28258810	C	C	G	Csmd2:97884:intron:3:38016:83437
127.834548	rs28258766	C	C	C	Csmd2:97884:intron:3:43539:83437



127.847945	rs28258688	G	A	G	Csmd2:97884:intron:3:56937:83437
127.854852	rs27549832	C	T	T	Csmd2:97884:intron:3:63844:83437
127.856879	rs3679250	C	T	T	Csmd2:97884:intron:3:65870:83437
127.861913	rs32639402	C	T	T	Csmd2:97884:intron:3:70904:83437
127.86385	rs27549778	T	G	G	Csmd2:97884:intron:3:72841:83437
127.866039	rs27529667	G	A	A	Csmd2:97884:intron:3:75030:83437
127.879441	rs27529590	G	A	A	Csmd2:97884:intron:4:4799:12318
127.930399	rs13477972	G	G	G	=
127.942426	rs27511536	A	G	G	=
127.944322	rs27511523	C	C	T	=
127.949624	rs32776938	C	C	C	=
127.954923	rs27511427	A	G	A	Csmd2:97884:intron:6:13699:14114
127.955933	rs31999695	G	G	G	Csmd2:97884:intron:6:12689:14114
127.967934	rs27496060	G	C	G	Csmd2:97884:intron:6:688:14114
127.969251	rs27496056	T	T	T	Csmd2:97884:intron:7:4386:4937
127.983903	rs6403395	A	G	G	Csmd2:97884:intron:10:14588:14762
127.989337	rs32877938	C	T	T	Csmd2:97884:intron:10:9154:14762
128.022355	rs6158785	A	G	G	Csmd2:97884:intron:13:23771:30184
128.068952	rs27558837	A	A	G	Csmd2:97884:intron:19:1780:9186
128.074187	rs6167734	G	T	G	Csmd2:97884:intron:21:3356:5208
128.075546	rs27558769	T	C	T	Csmd2:97884:intron:21:1997:5208
128.163837	rs27575576	C	A	C	Csmd2:97884:intron:40:207:3322
128.170442	rs6372079	C	C	C	Csmd2:97884:intron:41:73:6260
128.170634	rs6373084	C	C	C	Csmd2:97884:exon:42:70:187
128.171377	rs27561120	G	A	G	Csmd2:97884:intron:42:1887:2558
128.172972	rs32811479	C	T	C	Csmd2:97884:intron:42:291:2558
128.176603	rs27561093	A	A	A	Csmd2:97884:intron:44:9200:11211
128.17715	rs27561089	G	G	G	Csmd2:97884:intron:44:8652:11211
128.177233	rs27561088	C	C	C	Csmd2:97884:intron:44:8569:11211
128.193761	rs31830531	A	A	C	Csmd2:97884:intron:48:1074:4065
128.194527	rs6228055	A	A	A	Csmd2:97884:intron:48:309:4065
128.196688	rs3706755	C	T	C	Csmd2:97884:intron:50:700:950
128.222228	rs27546374	G	G	A	Csmd2:97884:intron:56:987:1124
128.222777	rs27546367	C	C	C	Csmd2:97884:intron:56:438:1124
128.227771	rs32749976	G	G	G	Csmd2:97884:intron:60:1430:2680
128.236253	rs27546257	G	G	G	Csmd2:97884:intron:64:850:2072
128.269624	rs27520921	G	G	A	Zscan20:97877:exon:3:126:171
128.276718	rs6287401	C	C	C	Zscan20:97877:intron:2:4729:11696
128.313517	rs32019531	C	C	C	=
128.318556	rs32182628	C	T	C	=
128.390152	rs27558327	C	T	C	Phc2:106080:intron:7:547:10548



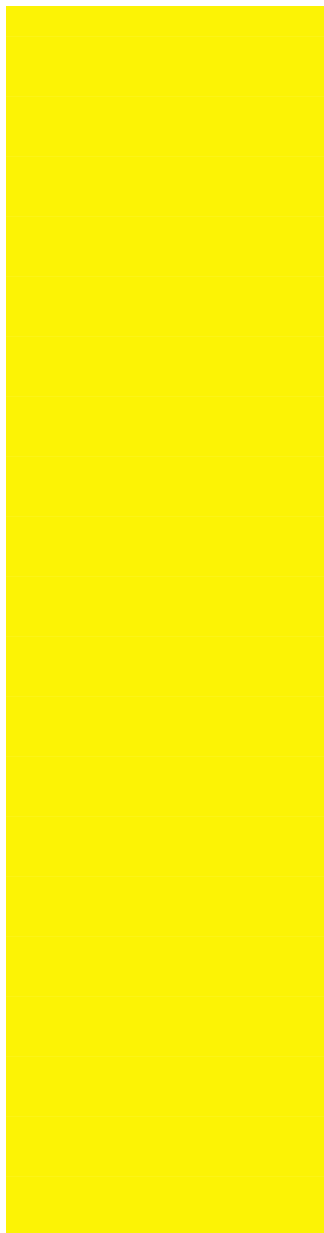
128.394079	rs27558320	T	C	T
128.397635	rs27558285	A	A	G
128.402636	rs27558264	C	C	C
128.402676	rs27558262	G	G	G
128.407585	rs32409538	A	A	A
128.421457	rs27558242	G	A	G
128.424509	rs27558231	C	C	T
128.425092	rs6246370	A	G	G
128.428082	rs13477973	C	C	C
128.429733	rs4224774	G	A	G
128.522938	rs32692891	T	T	C
128.547955	rs6361251	G	T	T
128.547972	rs6361293	T	C	C
128.553104	rs27518767	T	A	A
128.554532	rs3682599	C	T	T
128.568804	rs31808858	C	T	T
128.568931	rs6212998	T	G	G
128.656875	rs32982673	C	C	T
128.659383	rs6334688	T	C	C
128.659441	rs6335152	A	G	A
128.659475	rs6335194	C	T	C
128.700493	rs32533122	C	C	T
128.721432	rs27507875	C	C	C
128.771644	rs27493557	G	A	A
128.772381	rs27493539	G	G	G
128.796566	rs32515127	C	T	C
128.800227	rs32704556	C	C	C
128.863204	rs32530883	G	G	G
128.972916	rs32637839	C	C	C
129.003217	rs27516779	C	C	T
129.067497	rs27503097	C	C	C
129.104808	rs27486671	G	G	G
129.125982	rs31775195	G	A	G
129.132152	rs27486540	C	C	A
129.172812	rs27519163	G	G	G
129.202096	rs31878418	A	A	G
129.202456	rs27519079	C	C	T
129.202535	rs32047403	G	G	A
129.229073	rs3023007	C	C	A
129.266384	rs6230055	A	A	T
129.271313	rs27503543	G	G	A

Phc2:106080:intron:7:4474:10548
Phc2:106080:intron:7:8031:10548
Phc2:106080:intron:9:1677:19639
Phc2:106080:intron:9:1717:19639
Phc2:106080:intron:9:6626:19639
Phc2:106080:intron:10:656:1443
Phc2:106080:intron:13:22:763
Phc2:106080:intron:13:605:763
Phc2:106080:intron:14:2553:3214
Phc2:106080:exonUTR:15:989:1381
=
=
=
=
=
Trim62:35667:intron:1:6981:12241
Trim62:35667:intron:1:7109:12241
=
=
=
=
=
Hpc2:30572:intron:1:1898:2457
=
=
Sync:102599:intron:2:1295:11964
Rbbp4:102598:intron:3:2613:5717
=
Zbtb8:53042:exonUTR:4:262:2061
=
=
=
Hdac1:102597:intron:3:4074:4605
Hdac1:102597:intron:3:3714:4605
Hdac1:102597:intron:3:3635:4605
Lck:102596:exon:11:40:152
=
Eif3i:102593:intron:6:989:1420

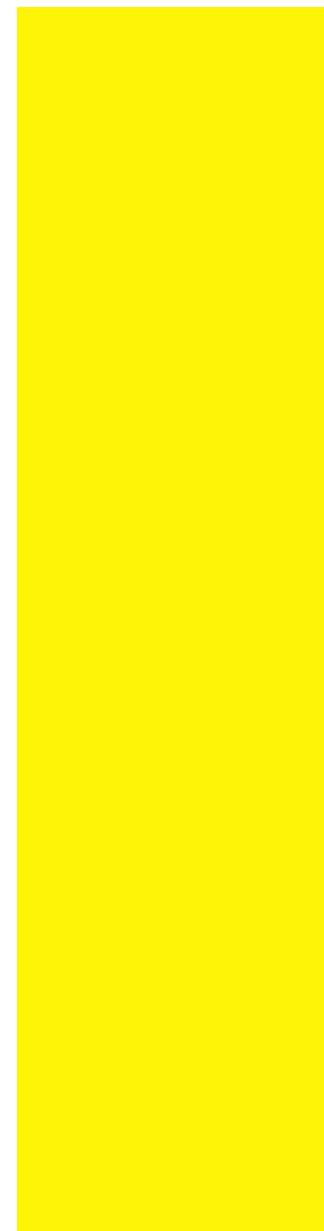
129.285462	rs27503496	A	A	G	2510006D16Rik:102591:exonUTR:5:761:1064
129.288868	rs27503473	A	A	G	=
129.30694	rs3708285	G	G	A	Txlna:46425:intron:9:614:664
129.309744	rs27503370	C	C	A	Txlna:46425:intron:5:1873:2088
129.310847	rs6324687	A	A	T	Txlna:46425:intron:5:770:2088
129.316836	rs32548878	G	G	A	Txlna:46425:intron:2:662:686
129.332117	rs27503309	G	G	A	Kpna6:102590:exon:7:79:87
129.390507	rs6355333	A	A	C	=
129.390619	rs6355837	A	A	C	=
129.394818	rs3707129	C	C	A	Khdrbs1:66257:intron:8:1508:2894
129.396105	(liftover)	A	A	G	Khdrbs1:66257:intron:8:221:2894
129.405334	rs32527750	G	G	T	Khdrbs1:66257:intron:2:2110:2527
129.460064	rs31761641	C	C	C	=
129.468467	rs32804587	G	G	G	=
129.469135	rs27548339	G	G	G	=
129.512388	rs27523625	T	T	T	Ptp4a2:30578:intron:1:14541:18374
129.581443	rs32669349	G	G	G	=
129.590127	rs27523430	T	T	A	=
129.590174	rs32770951	C	C	T	=
129.607486	rs27507150	T	T	C	=
129.60784	rs3661158	A	A	T	=
129.613379	rs32538263	T	T	A	=
129.670962	rs27506973	G	G	C	Bai2:106015:intron:2:837:12143
129.688714	rs27506940	G	G	A	Bai2:106015:intron:14:50:181
129.693236	rs31927373	A	A	G	Bai2:106015:intron:23:957:2026
129.698537	rs27506913	A	A	G	Bai2:106015:intron:28:38:307
129.702068	rs27506888	G	G	A	=
129.70235	rs27506885	T	T	C	=
129.707182	rs31981414	T	T	G	=
129.718638	rs31814358	G	G	A	=
129.738652	rs27492032	A	A	G	Col16a1:44565:intron:24:27:219
129.772456	rs27491876	C	C	C	Col16a1:44565:intron:64:661:992
129.775759	rs3698956	A	G	G	Col16a1:44565:intron:69:270:645
129.783107	rs32296086	T	C	C	=
129.787424	rs27517916	T	T	T	Pef1:30563:intron:1:2529:13515
129.802584	rs27517816	C	C	C	Pef1:30563:intron:3:121:433
129.804978	rs13460366	A	A	A	Pef1:30563:exonUTR:5:481:880
129.807689	rs6172432	G	G	G	Hcrtr1:30562:exonUTR:9:559:785
129.807827	rs6173076	C	C	C	Hcrtr1:30562:exonUTR:9:421:785
129.808881	rs27517790	C	T	T	Hcrtr1:30562:intron:8:995:1627
129.845028	rs8274322	G	A	A	Tinagl:30560:exon:7:63:149

129.847468	rs8272673	G	A	A
129.859302	rs27502913	C	T	T
129.945644	rs27502722	C	C	C
129.972687	rs27487038	A	T	T
130.004434	rs13477979	A	A	A
130.005347	rs27486878	G	G	G
130.010338	rs27486859	C	C	C
130.01037	rs27486858	G	G	G
130.01566	rs27486828	T	T	T
130.192876	rs6370137	T	T	T
130.261463	rs6280547	C	C	C
130.472961	rs27571971	C	T	T
130.490753	rs3024208	T	C	C
130.493276	rs31794254	C	G	G
130.499871	rs27557403	A	C	C
130.49989	rs27557402	T	C	C
130.59766	rs32994199	A	A	A
130.723187	rs28260697	G	G	G
130.723455	rs28260694	C	C	C
130.724603	rs28260692	C	C	C
130.745254	rs28260589	G	A	A
130.757629	rs6155696	C	T	T
130.761438	(liftover)	G	G	G
130.762014	rs28260490	G	A	A
130.839215	rs27556051	A	A	A
130.841042	rs13477982	G	G	G
130.882555	rs27555797	C	C	C
131.042318	rs6175993	C	T	T
131.04243	rs6176542	G	A	A
131.083535	rs13477983	C	C	C
131.111806	rs27539160	G	G	G
131.11189	rs27539159	G	G	G
131.1144	rs32545155	C	C	C
131.179134	rs13477984	A	G	G
131.222	rs6206222	A	A	A
131.239754	rs6309309	C	C	C
131.327707	rs13477985	G	G	G
131.335045	rs27554287	C	C	C
131.385133	rs3089399	A	A	A
131.405132	rs32654442	C	C	C
131.405806	rs27537776	A	A	A

Tinagl:30560:intron:3:2706:3526
=
Serinc2:75677:intron:1:7056:10226
=
Zcchc17:105995:intron:7:1:10382
Zcchc17:105995:intron:6:1470:2234
Zcchc17:105995:intron:5:3982:7401
Zcchc17:105995:intron:5:3950:7401
Zcchc17:105995:intron:4:66:1312
=
Pum1:30315:intron:3:4436:17041
Laptm5:30316:intron:1:3611:12668
Laptm5:30316:exonUTR:8:377:1680
=
=
=
=
=
=
=
=
=
=
=
=
=
=
=
=
=
=
=
=
=
Ptpru:105987:intron:27:710:930
Ptpru:105987:exon:23:47:154
Ptpru:105987:intron:1:8864:14118
Mecr:105983:intron:1:5537:8643
Mecr:105983:intron:1:6211:8643



131.411924	rs27589731	C	C	C	Mecr:105983:intron:4:1291:3039
131.462113	rs27571329	A	A	A	=
131.46318	rs6271927	T	T	T	=
131.463461	rs27571326	C	C	C	=
131.463564	rs6274131	C	C	C	=
131.473401	rs32925582	A	A	A	=
131.479415	rs32677228	C	C	C	Epb4.1:105975:UTR:21:2433:2520
131.481438	rs32595861	A	A	A	Epb4.1:105975:UTR:21:410:2520
131.493922	rs32921209	G	G	G	Epb4.1:105975:intron:12:24916:27054
131.494478	rs4137024	C	C	C	Epb4.1:105975:intron:12:24360:27054
131.499288	rs32773275	A	A	A	Epb4.1:105975:intron:12:19549:27054
131.49939	rs27571156	G	G	G	Epb4.1:105975:intron:12:19448:27054
131.507348	rs27571105	C	C	C	Epb4.1:105975:intron:12:11489:27054
131.525927	rs6205997	A	A	A	Epb4.1:105975:intron:6:12440:14476
131.52956	rs31884959	G	G	G	Epb4.1:105975:intron:6:8807:14476
131.555832	rs32745078	T	T	T	Epb4.1:105975:intron:3:281:2656
131.565378	rs6216050	T	T	T	=
131.565876	rs6218778	C	C	C	=
131.566136	rs6232772	G	G	G	=
131.572784	rs27538944	A	A	A	=
131.598948	rs33028144	A	A	A	=
131.622455	rs32357090	A	A	A	=
131.649006	rs27538669	G	G	G	=
131.661473	rs27571949	T	T	T	=
131.671161	rs27571891	G	G	G	Oprd1:56336:intron:2:1871:3048
131.673979	rs27571879	A	A	A	Oprd1:56336:intron:1:26093:26689
131.679453	rs27571844	A	A	A	Oprd1:56336:intron:1:20620:26689
131.693048	rs3665429	G	A	A	Oprd1:56336:intron:1:7024:26689
131.714795	rs32085537	C	C	C	=
131.73717	rs27571729	C	T	T	=
132.269704	rs27574544	A	A	T	Eya3:105927:intron:16:1825:7246
132.274214	rs31877044	C	C	G	Eya3:105927:intron:16:6335:7246
132.291007	rs32040669	A	A	A	Smpd13b:30709:intron:7:2926:4257
132.328214	rs27559328	A	A	A	Rpa2:102561:intron:4:344:1870
132.380276	rs27559177	A	A	G	=
132.384225	rs27559165	G	G	A	Ppp1r8:30702:intron:6:1062:1164
132.384394	rs27559164	A	A	G	Ppp1r8:30702:intron:6:893:1164
132.38444	rs6304995	A	A	A	Ppp1r8:30702:intron:6:847:1164
132.402407	rs31797596	A	A	G	=
132.410011	rs3664871	G	G	A	Stx12:30698:exonUTR:9:1462:2054
132.419164	rs13459077	C	C	T	Stx12:30698:exon:4:47:136



132.423448	rs32584597	T	T	C
132.431032	rs27543107	T	T	C
132.445988	rs6235031	G	G	A
132.450471	rs32546992	A	A	G
132.469336	rs27542958	C	C	T
132.469363	rs27542957	G	G	A
132.473951	rs32352017	T	T	C
132.483647	rs3721169	C	C	A
132.487626	rs31740095	A	A	G
132.494106	rs27542907	A	A	T
132.495658	rs32830723	G	G	T
132.506831	rs27590336	C	A	C
132.55615	rs4224808	G	C	G
132.607474	rs32553538	G	G	G
132.607593	rs27572270	T	T	T
132.609587	rs31835031	C	C	C
132.631622	rs27557160	G	G	G
132.642384	rs33024223	G	A	G
132.643328	rs32345660	G	G	G
132.648947	rs27557134	T	T	T
132.661554	(liftover)	C	A	C
132.661866	rs6168969	T	T	G
132.661901	rs6169419	C	C	T
132.683807	rs27557088	C	T	C
132.687512	rs27557066	T	A	T
132.691183	rs3687815	G	C	G
132.691429	rs3689125	C	G	C
132.74491	rs27541519	C	C	T
132.781433	rs27541374	C	T	C
132.781978	rs27541373	G	A	G
132.782128	rs27541372	T	G	T
132.807709	rs32140167	C	C	T
132.807931	rs27573447	G	A	G
132.808377	rs27573445	G	C	G
132.810523	rs32051931	A	T	A
132.821069	rs27573361	G	A	A
132.822241	rs13477988	G	G	A
132.826316	rs32348726	A	G	G
132.8265	rs27573334	C	G	C
132.837224	rs6297037	C	G	C
132.854278	rs27558164	T	C	T

Stx12:30698:intron:3:634:4870
Stx12:30698:intron:1:9129:12588
=
=
BC008163:30696:intron:5:246:2889
BC008163:30696:intron:5:219:2889
BC008163:30696:intron:2:2690:2949
=
=
=
=
Fgr:30693:exonUTR:13:100:2578
Ahdc1:105915:intron:2:39271:42723
Ahdc1:105915:intron:2:39389:42723
Ahdc1:105915:intron:2:41384:42723
Ahdc1:105915:intron:5:9428:10707
=
=
=
=
Wasf2:84241:intron:1:868:45710
Wasf2:84241:intron:1:4538:45710
Wasf2:84241:intron:1:4785:45710
Wasf2:84241:intron:4:3242:3324
=
=
=
Map3k6:30677:intron:25:19:84
Map3k6:30677:intron:26:44:82
Map3k6:30677:exon:28:62:75
Sytl1:30674:intron:13:923:1871
=
D4Ert196e:74705:exonUTR:8:595:874
D4Ert196e:74705:intron:4:561:1152
D4Ert196e:74705:intron:4:377:1152
=
Wdtdc1:43305:intron:12:2196:2903



132.858678	rs3714017	C	A	C
132.85871	rs3714069	T	A	T
132.859071	rs3716533	T	T	A
132.875984	rs3713447	A	T	A
132.889823	rs3679719	A	G	A
132.900671	rs3702908	A	G	A
132.90511	rs32814252	C	T	C
132.934772	rs27557901	G	G	G
132.945086	rs27557868	A	A	A
132.95035	rs27541348	C	C	C
132.961832	rs27541323	C	C	C
132.962895	rs27541322	T	C	T
132.966288	rs27541308	A	G	A
132.9991	rs27541188	A	G	A
133.020919	rs3666203	G	C	G
133.022792	rs3705810	A	T	A
133.059312	rs27575563	G	A	G
133.062857	rs27575549	A	G	A
133.062943	rs3720944	G	C	G
133.062964	rs32278662	T	C	C
133.102348	(liftover)	T	T	T
133.120282	rs13477989	T	T	T
133.161497	rs27559955	G	A	G
133.195245	rs31926684	C	T	C
133.205744	rs3697791	C	G	C
133.205765	rs3698233	A	G	A
133.21924	rs3653502	A	G	G
133.226478	rs32966714	A	G	A
133.250307	rs27559690	C	G	C
133.250858	rs27559687	C	T	C
133.255494	rs27559676	C	T	C
133.25552	rs27559675	A	C	A
133.264317	rs32206113	G	G	A
133.268738	rs3671045	G	A	G
133.269026	rs3672821	A	G	A
133.272035	rs27542812	A	G	G
133.297566	rs31809658	T	A	A
133.311577	rs13477990	A	G	G
133.311651	rs27556800	G	G	T
133.376952	rs31855473	G	A	G
133.422434	rs27546469	C	T	C

Wdtdc1:43305:intron:9:786:1093
Wdtdc1:43305:intron:9:754:1093
Wdtdc1:43305:intron:9:393:1093
Wdtdc1:43305:intron:3:2101:8363
Wdtdc1:43305:intron:1:5086:15019
=
=
Slc9a1:84240:intron:1:7948:40928
Slc9a1:84240:intron:1:18262:40928
Slc9a1:84240:intron:1:23527:40928
Slc9a1:84240:intron:1:35009:40928
Slc9a1:84240:intron:1:36071:40928
Slc9a1:84240:intron:1:39464:40928
=
=
=
=
=
=
=
=
Pigv:62118:intron:3:1331:1865
Pigv:62118:intron:1:1755:2456
Arid1a:105897:intron:7:269:590
Arid1a:105897:intron:6:627:740
Arid1a:105897:intron:4:19957:23379
Arid1a:105897:intron:4:19931:23379
Arid1a:105897:intron:4:11134:23379
Arid1a:105897:intron:4:6713:23379
Arid1a:105897:intron:4:6425:23379
Arid1a:105897:intron:4:3416:23379
Arid1a:105897:intron:1:10816:29415
=
=
=
Rps6ka1:3741:intron:7:602:721



133.428429	rs27594521	C	A	C
133.435086	rs27594490	T	C	T
133.435414	rs13477991	G	G	A
133.437646	rs27594479	T	C	T
133.437778	rs31787965	G	A	G
133.440901	rs3682399	C	T	C
133.464073	rs32144747	C	A	C
133.464482	rs32191390	A	T	A
133.481398	rs32441878	C	A	C
133.521695	rs27574257	C	C	C
133.524345	rs32109026	C	T	C
133.533582	rs32459849	G	A	G
133.547607	rs27574190	G	A	G
133.548471	rs13469621	T	C	T
133.557721	rs27574156	T	G	T
133.563784	rs27574134	A	G	A
133.563864	rs31849723	C	T	C
133.573384	rs32169827	A	G	A
133.574402	rs32683895	C	A	C
133.601214	rs32340332	C	T	C
133.601262	rs32343641	C	A	C
133.601326	rs27560257	C	T	C
133.614339	rs27560213	A	G	A
133.620972	rs27560176	C	T	C
133.628172	rs3723862	A	G	A
133.629716	rs27560134	C	T	C
133.630765	rs13477992	G	A	G
133.708672	rs27543965	T	C	T
133.721841	rs32634226	C	A	C
133.735237	rs32628878	A	G	A
133.774089	rs27543820	G	A	G
133.77471	rs27543815	G	A	G
133.800576	rs32235652	C	C	C
133.804582	rs3654182	C	T	C
133.814251	rs3659153	T	C	T
133.828724	rs32917115	C	A	C
133.872237	rs27578112	G	A	G
133.906844	rs3682588	C	C	C
133.913304	rs3681494	A	G	A
133.922752	rs4136309	A	G	A
133.960384	rs27563155	T	G	T

Rps6ka1:3741:intron:2:8402:8912
Rps6ka1:3741:intron:2:1744:8912
Rps6ka1:3741:intron:2:1417:8912
Rps6ka1:3741:intron:1:5838:6607
Rps6ka1:3741:intron:1:5705:6607
Rps6ka1:3741:intron:1:2583:6607
=
=
=
Hmgn2:102552:intron:6:169:375
Hmgn2:102552:intron:1:42:562
Dhdds:105889:intron:8:2456:8869
Dhdds:105889:intron:5:770:1082
Dhdds:105889:exon:5:23:116
=
=
Lin28:51674:exon:3:146:184
Lin28:51674:intron:2:583:9955
Lin28:51674:intron:1:223:460
=
=
=
=
=
Aim1l:40805:intron:1:3719:3891
Aim1l:40805:exonUTR:2:1371:2504
Aim1l:40805:exonUTR:2:2419:2504
Ccgc21:40271:intron:6:1051:1518
Ccgc21:40271:intron:3:1361:10915
Ccgc21:40271:intron:1:7620:14060
Catsper4:55892:exon:6:87:119
Catsper4:55892:intron:4:2723:3011
Zfp593:30644:exonUTR:3:269:1623
=
=
=
Trim63:30638:intron:1:938:1003
Slc30a2:105872:intron:5:1538:2559
Extl1:30643:exonUTR:11:441:1451
Extl1:30643:intron:1:4119:5968
Pafah2:39233:intron:3:224:761

133.976596	rs27563079	T	C	T
133.996434	rs32326264	C	C	C
133.996504	rs27563003	C	G	C
134.014211	rs27547313	T	C	T
134.014233	rs27547312	A	G	A
134.015651	rs3680298	G	A	G
134.0356	rs27547179	A	A	C
134.035655	rs27547178	C	C	T
134.045156	rs6294415	G	G	G
134.047604	rs13477993	T	T	C
134.047858	rs27547127	A	G	G
134.095142	rs32373575	G	A	A
134.124848	rs32872720	T	C	C
134.137317	rs32566356	G	C	G
134.177826	rs6221410	G	G	G
134.190126	rs6327269	G	A	A
134.233017	rs28261585	G	A	A
134.233132	rs28261582	G	T	T
134.238217	rs32826628	A	G	G
134.294814	rs13477994	G	A	A
134.296205	rs27591549	C	T	T
134.298556	rs27591517	C	T	T
134.346681	rs6312341	G	A	A
134.416255	rs27558707	G	G	G
134.418126	rs27558681	C	T	T
134.452902	rs27558492	C	C	C
134.457611	rs32565523	A	A	A
134.475897	rs27543402	A	G	G
134.482674	rs13470100	A	G	G
134.49363	rs27543340	G	A	A

Pafah2:39233:intron:9:641:2336

=

=

=

=

=

=

=

=

=

=

Sepn1:105865:exonUTR:13:562:1896

Man1c1:38628:exon:10:181:219

Man1c1:38628:intron:6:2897:3410

Man1c1:38628:intron:3:18374:46919

Man1c1:38628:intron:3:6074:46919

Man1c1:38628:intron:2:25842:62559

Man1c1:38628:intron:2:25726:62559

Man1c1:38628:intron:2:20641:62559

=

=

=

=

=

=

=

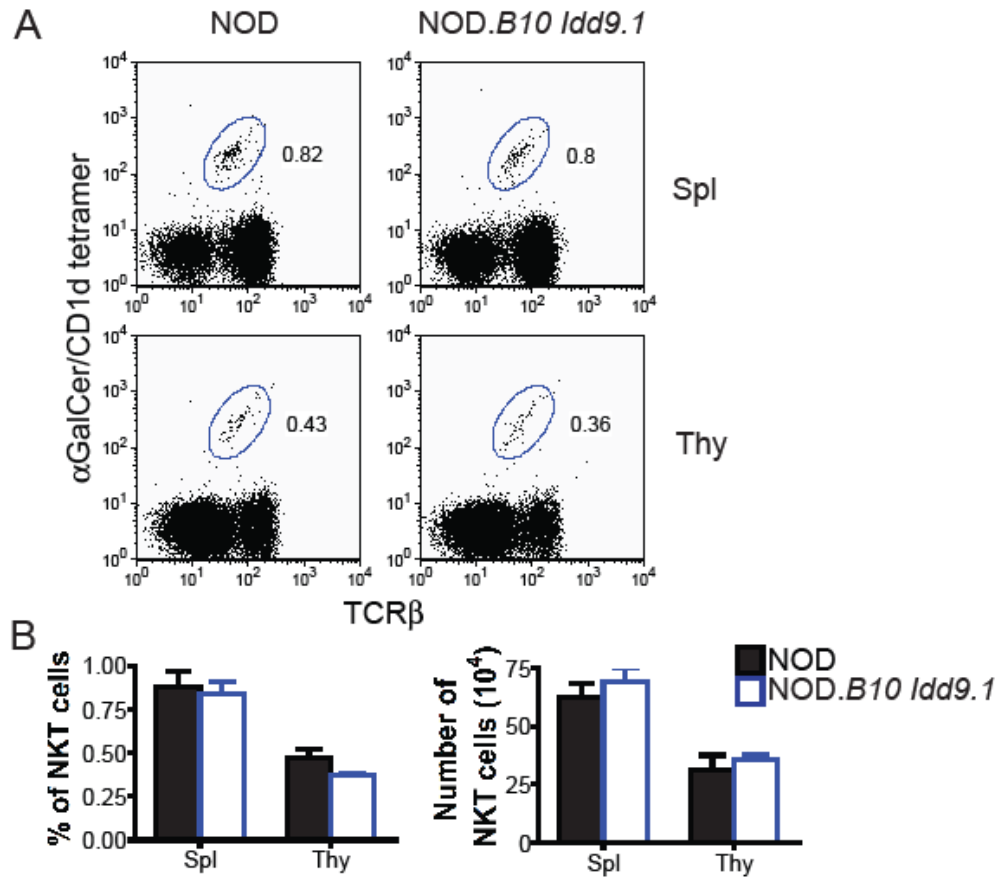
Tmem50a:30626:intron:5:1952:2887

=

D4Wsu53e:78084:exon:4:23:82

=

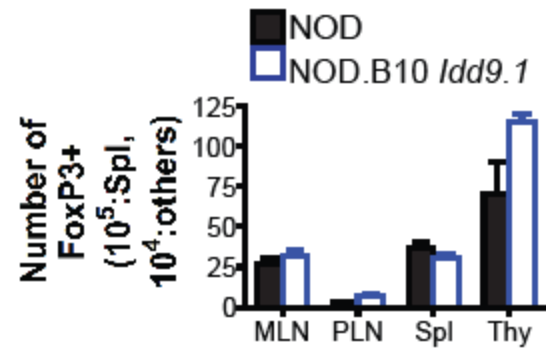
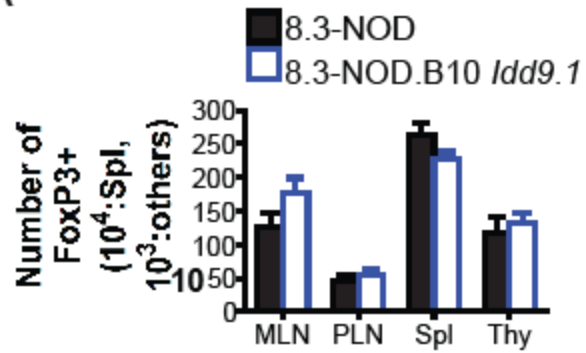
SUPPLEMENTARY
FIGURE 2



Supplementary Figure 2. Normal development of iNKT cells in NOD.B10 *Idd9.1* versus NOD mice. **A**, Representative flow cytometry profiles. **B**, Percentage and absolute numbers of iNKT cells/strain. Spl, Spleen; Thy, Thymus. Data correspond to averages \pm S.E for 3 mice per group (9-11 wk-old).

SUPPLEMENTARY FIGURE 3

A



B

