

Supplementary Figure

Figure 1: Crosslinking MHC class I does not redistribute PH-GFP or PH-GFP R40L

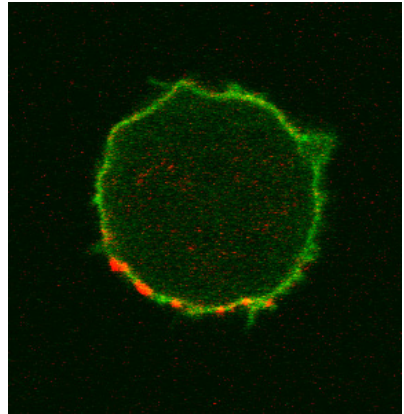
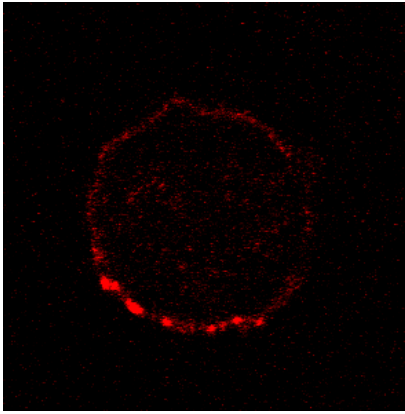
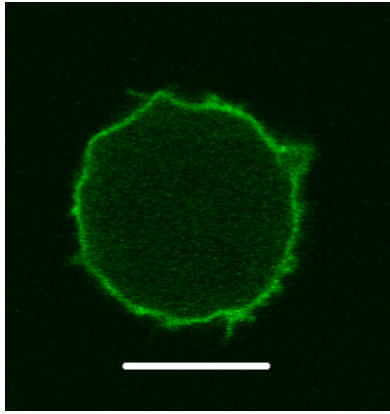
T2-Kb cells expressing PH-GFP (A-D) or PH-GFP R40L (E-F) were treated with high-affinity anti-Kb (HB-11) tagged with Cy-3 at 37°C to allow crosslinking of MHC molecules. Cells were fixed and mounted on poly-lysine coverslips, and imaged by Confocal microscopy. Z-stack images show capping of MHC-class I on the surface. Some cells showed no specific recruitment of PH-GFP (examples in A&B), while others showed some inconsistent colocalization (C&D). In E& F, T2-Kb cells expressing PH-GFP were adhered to coverslips pre-coated with antibodies against H2-Kb, (examples in E) or against CD-59 control antigen (examples in F). After 10 minutes at 37°C, cells were fixed and imaged by Confocal microscopy. Imaging the contact surface did not show any specific recruitment or punctate distribution of PH-GFP at the interface. All scale bars represent 10µm.

Supplemental Figure 1
PH-GFP

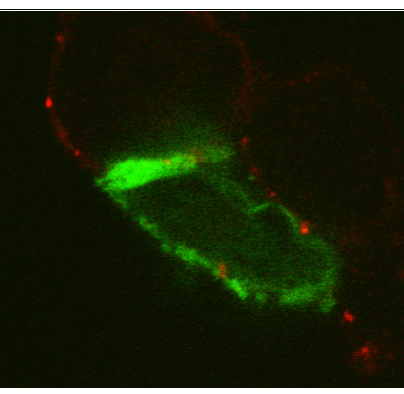
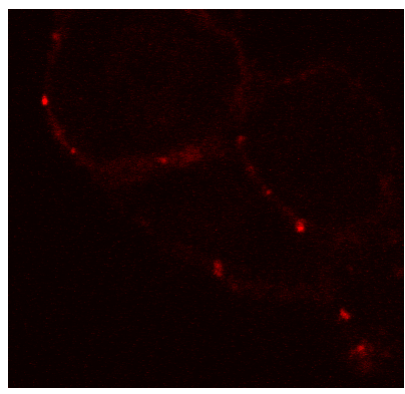
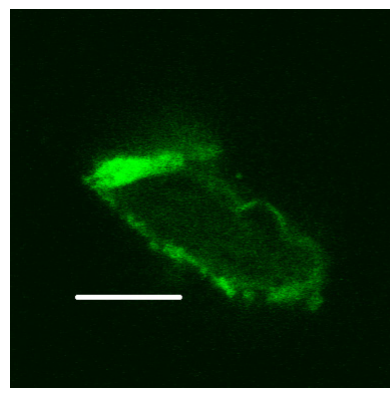
HB-11 Cy3

Merge

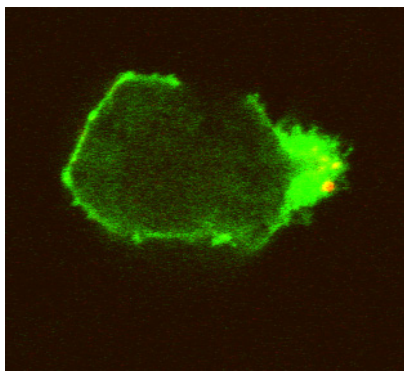
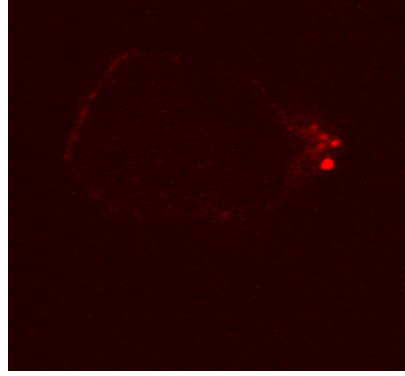
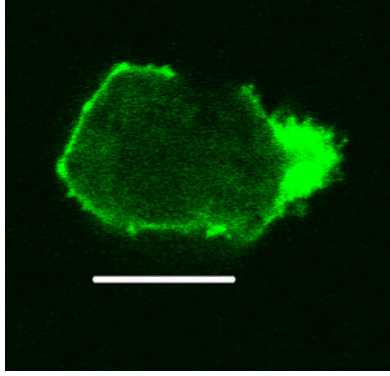
A



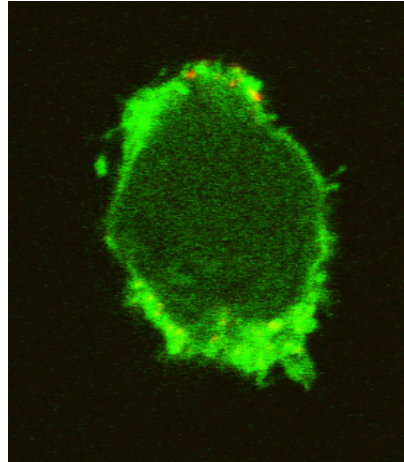
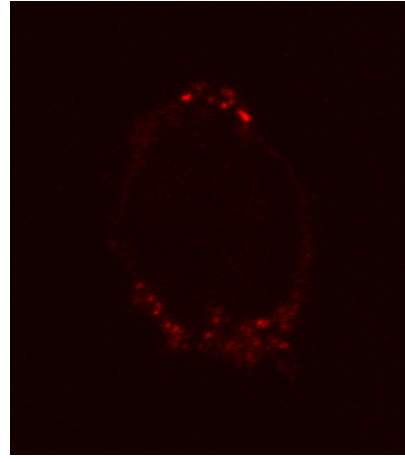
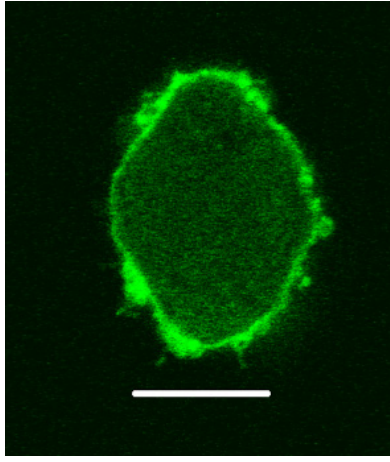
B



C



D

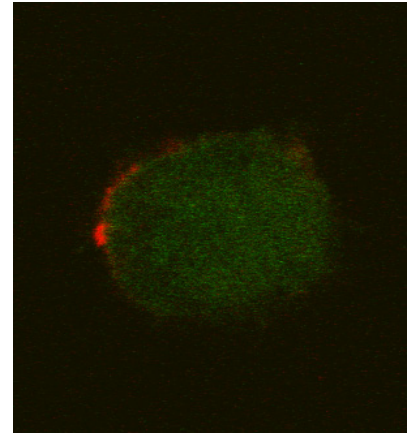
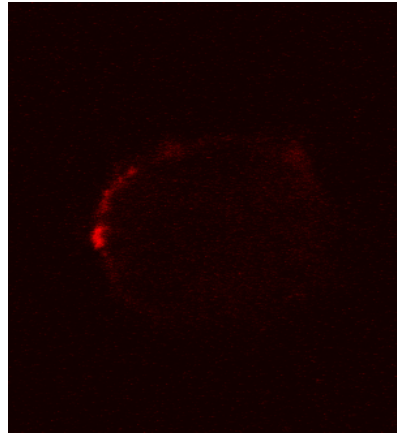
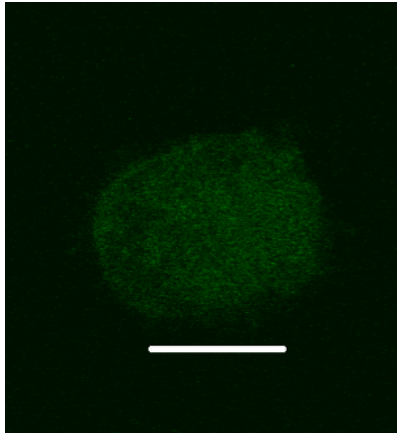


PH-GFP R40L

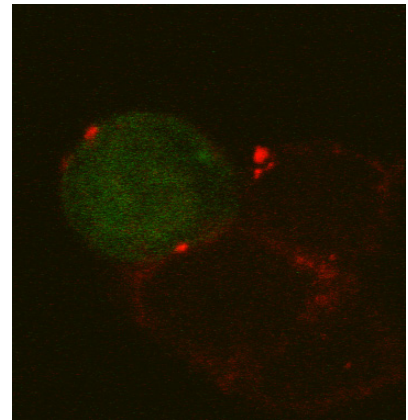
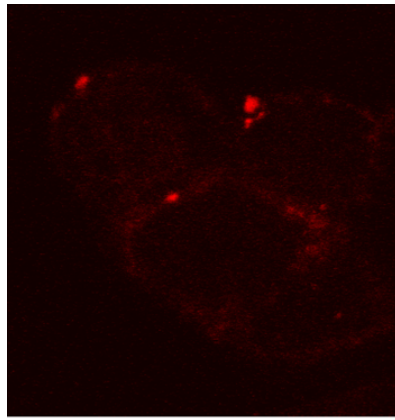
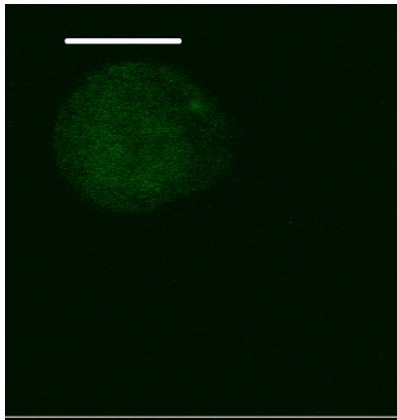
HB-11 Cy3

Merge

E

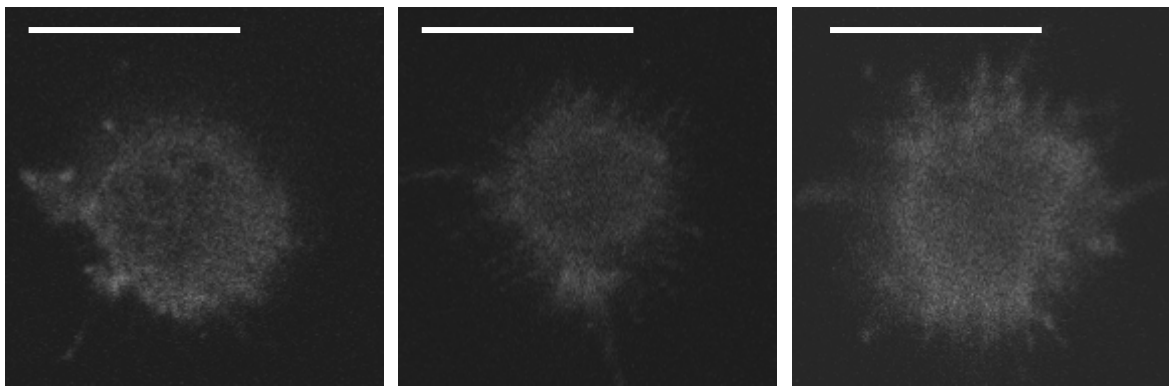


F

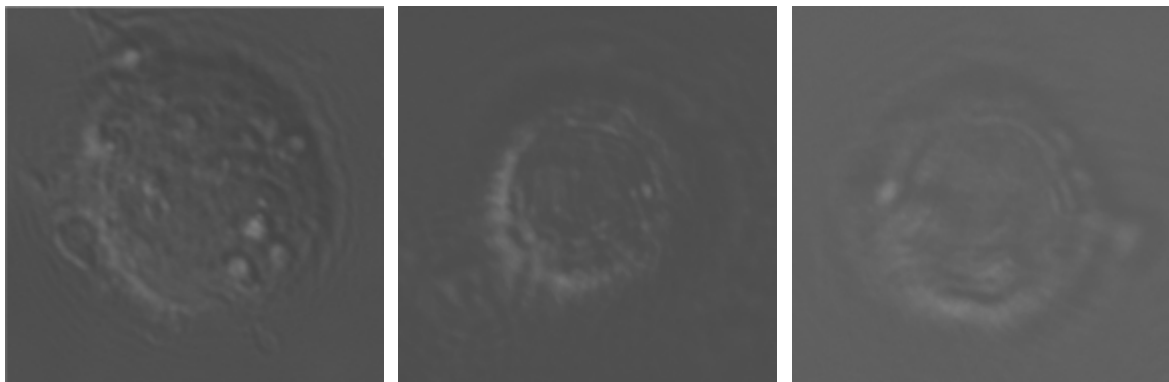


G. Y3-coated coverslips

PH-GFP

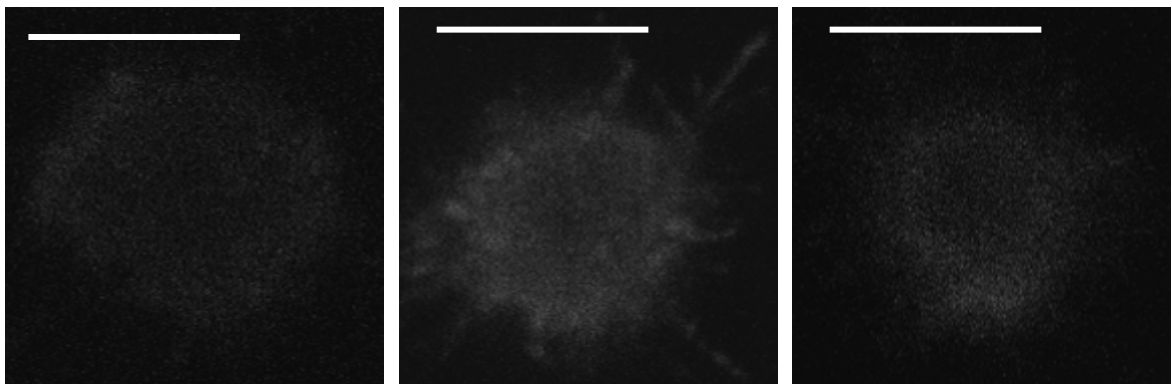


DIC



H. MEM43-coated coverslips

PH-GFP



DIC

