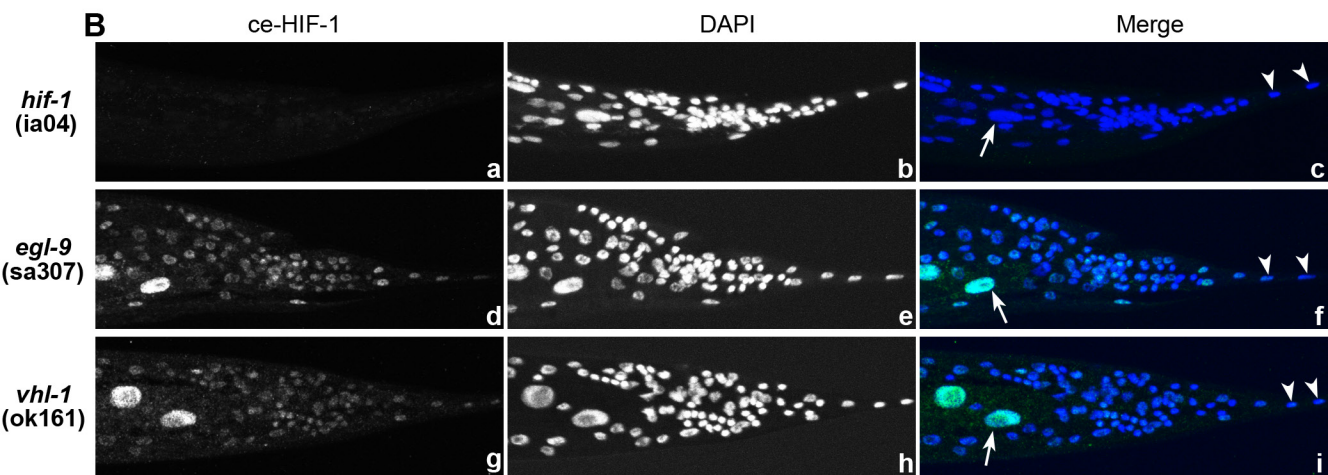
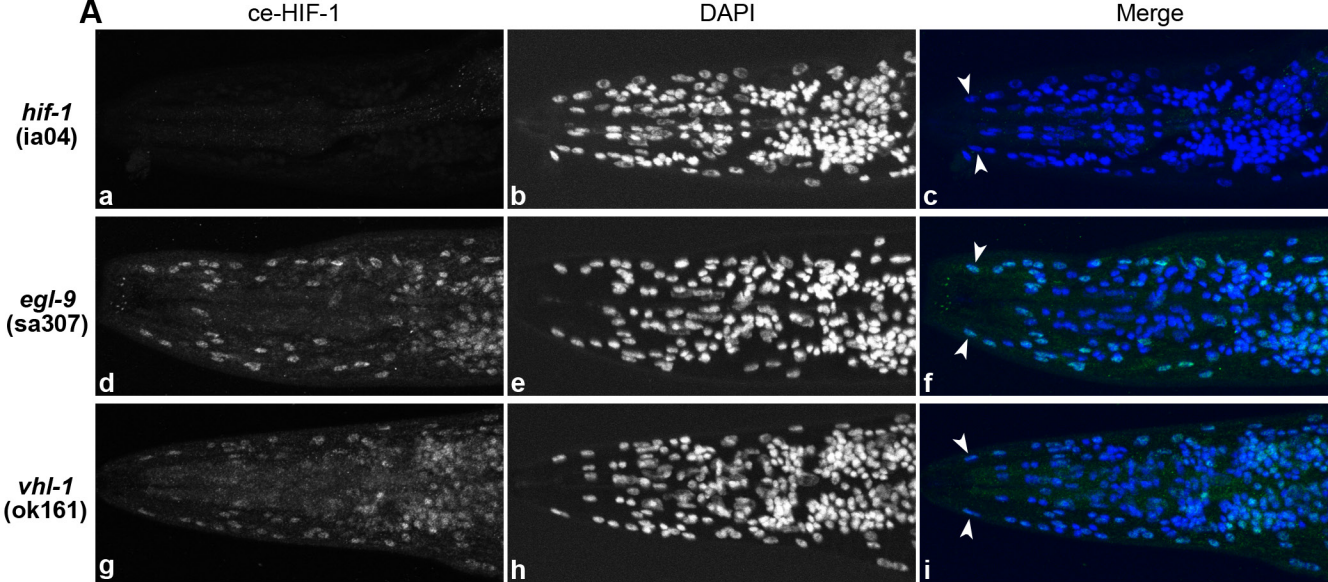


**Supplemental Figure 1.** Immunostaining shows that the antibody generated is specific for HIF-1. *egl-9(sa307)* and *vhl-1(ok161)* have constitutively high HIF-1 levels by immunostaining. *hif-1(ia04)* demonstrates background staining. Images are stacks of all nuclei visible with DAPI staining. Animals were stained with anti-Ce-Hif-1 antibody (a, d, g) and DAPI (b,e,h) to visualize nuclei. Hypodermal nuclei (tailless arrows) and intestinal nuclei (tailed arrows) are clearly observed in the merged images (c,f,i). The exposure time is shorter than is shown in Figure 3, to prevent overexposure. (A) Anterior of the worm. (B) Posterior of the worm. Scale bars, 50  $\mu$ m.

**Supplemental Figure 2.** This antibody recognizes two bands present in *egl-9(sa307)*, but absent in *hif-1(ia04)*. The bands migrate with an apparent molecular weight of 113 and 106 kilodaltons.



***hif-1***

***egl-9***

190

120

85

60

50

40

25

20

15

10

