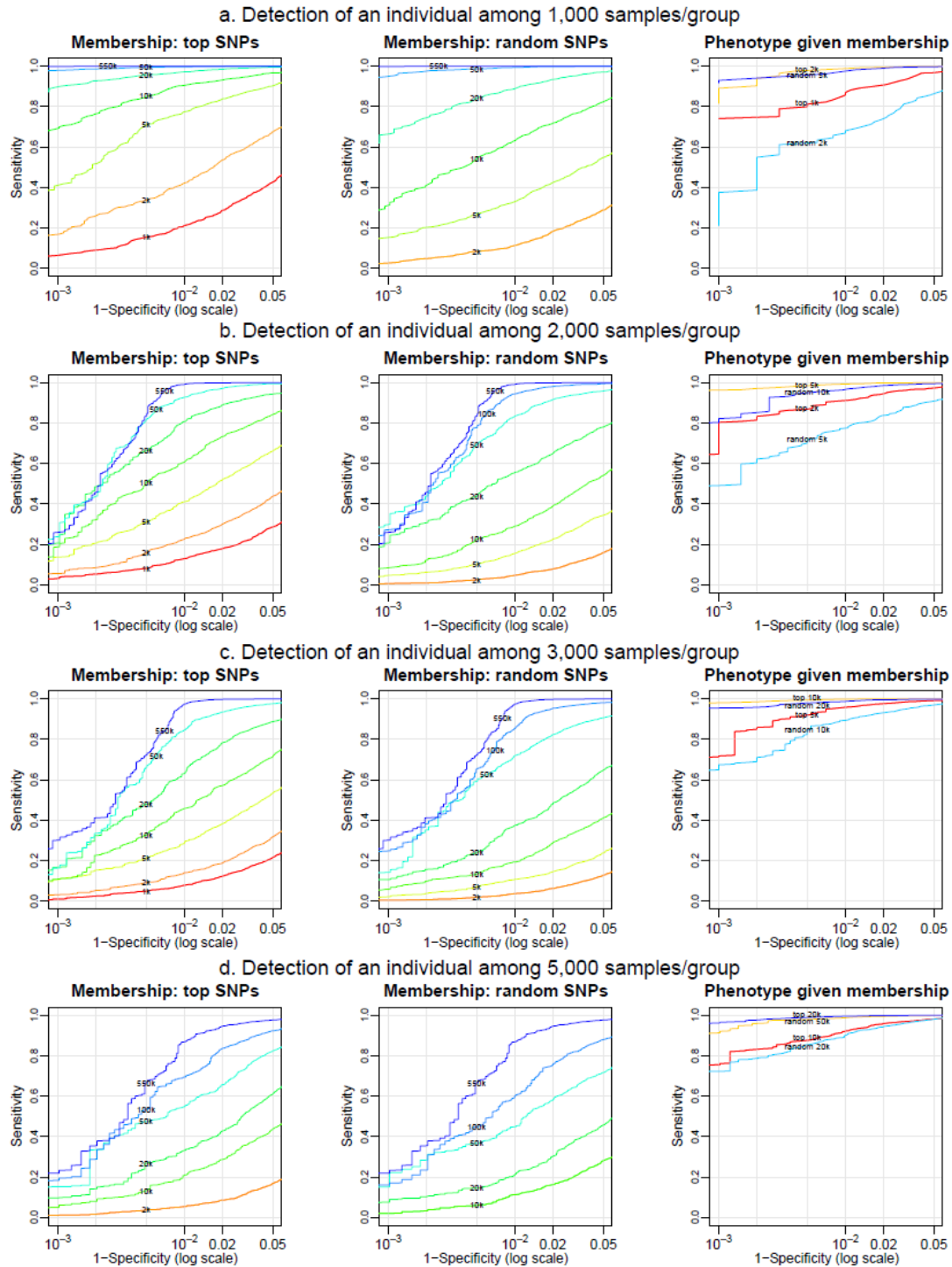
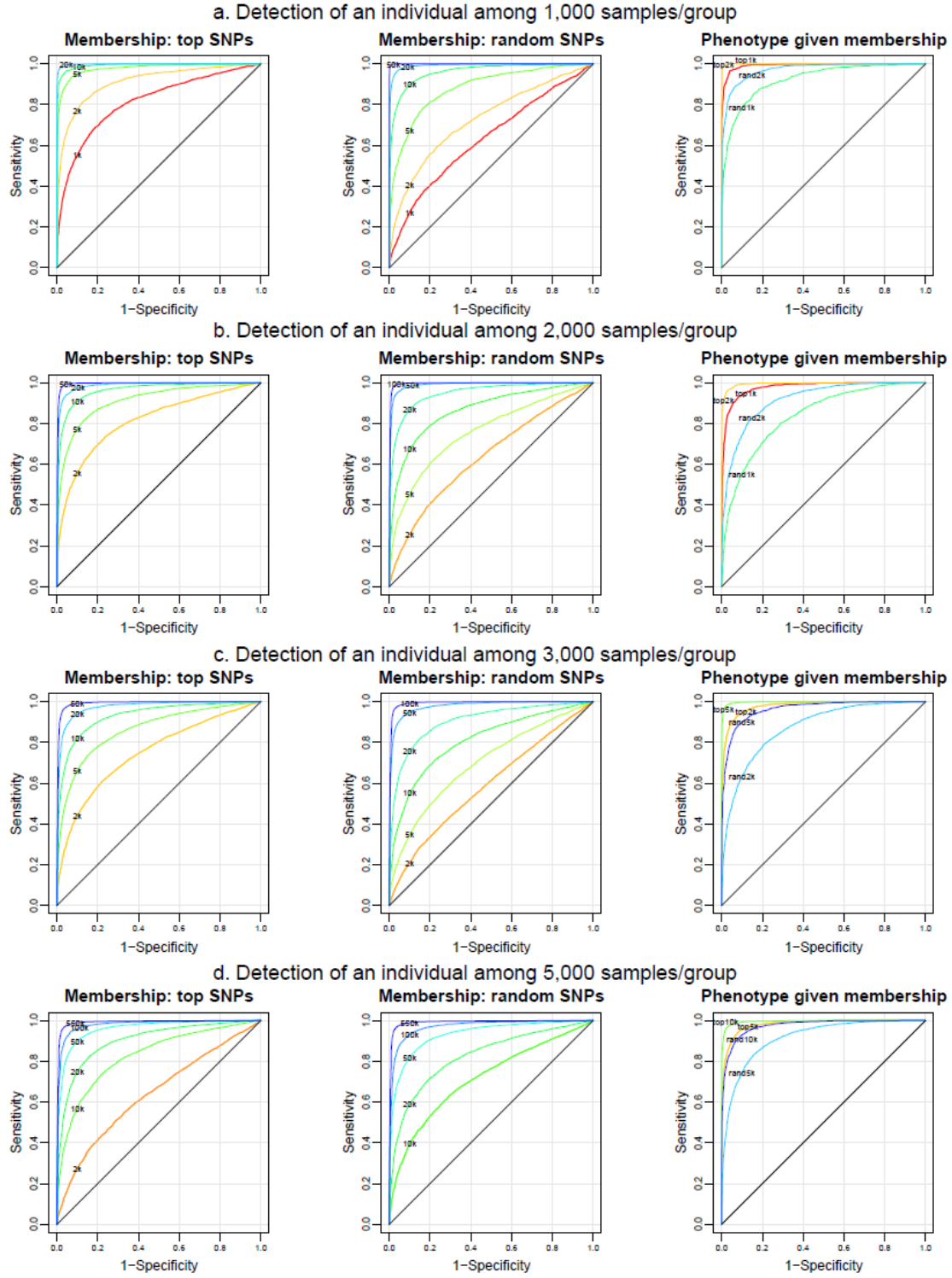


SUPPLEMENTARY INFORMATION

Supplementary Figure 1. Log-scale Receiver Operating Characteristic (ROC) curves of T_{geno} with Illumina HumanHap550 data from multiple GWAS scenarios of subjects of European descent.

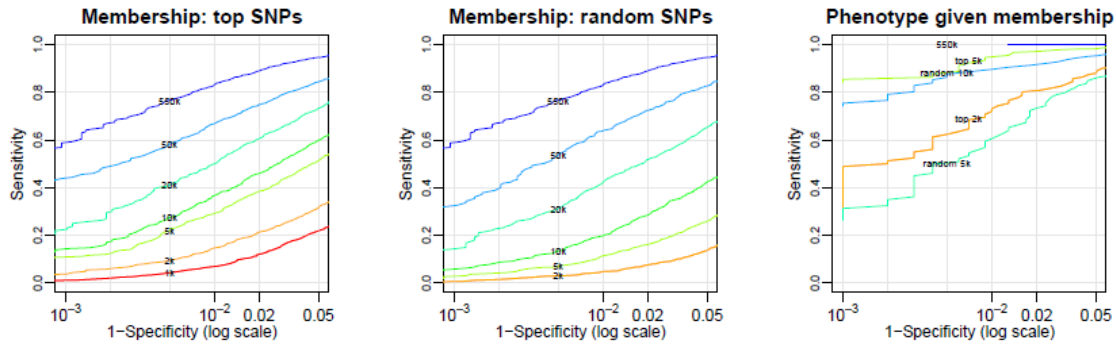


Supplementary Figure 2. Receiver Operating Characteristic (ROC) curves of T_{geno} with Illumina HumanHap550 data from multiple GWAS scenarios of subjects of European descent.

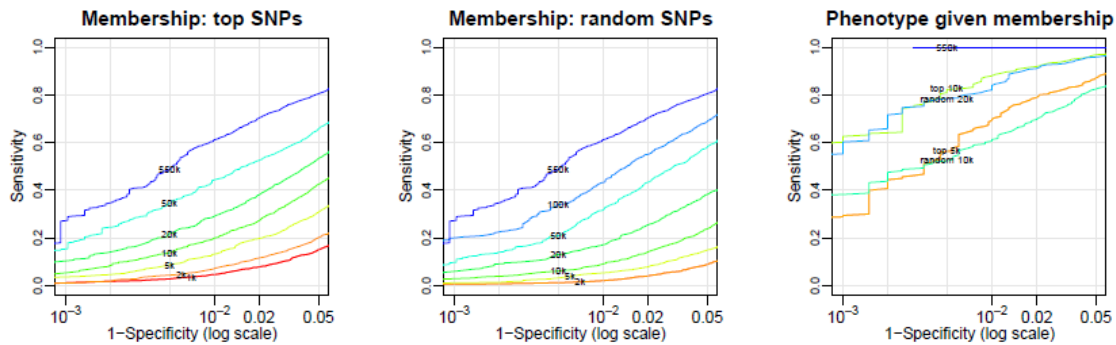


Supplementary Figure 3. Log-scale Receiver Operating Characteristic (ROC) curves of T_{allele} with Illumina HumanHap550 data from multiple GWAS scenarios of subjects of European descent.

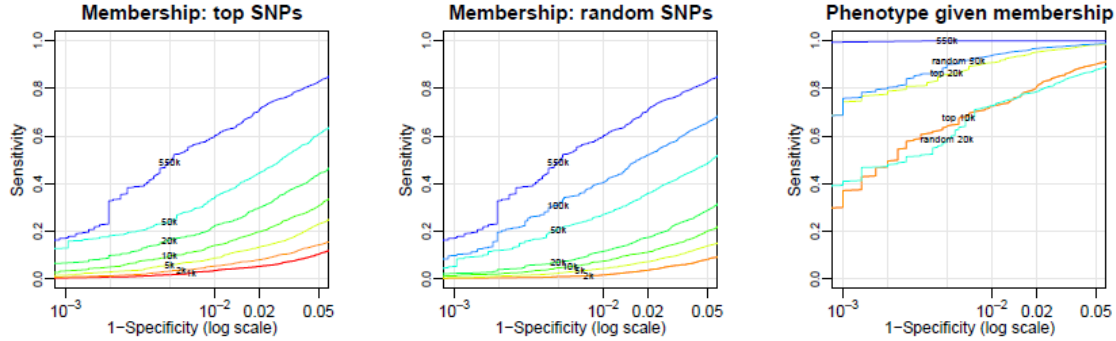
a. Detection of an individual among 1,000 samples/group



b. Detection of an individual among 2,000 samples/group



c. Detection of an individual among 3,000 samples/group



d. Detection of an individual among 5,000 samples/group

