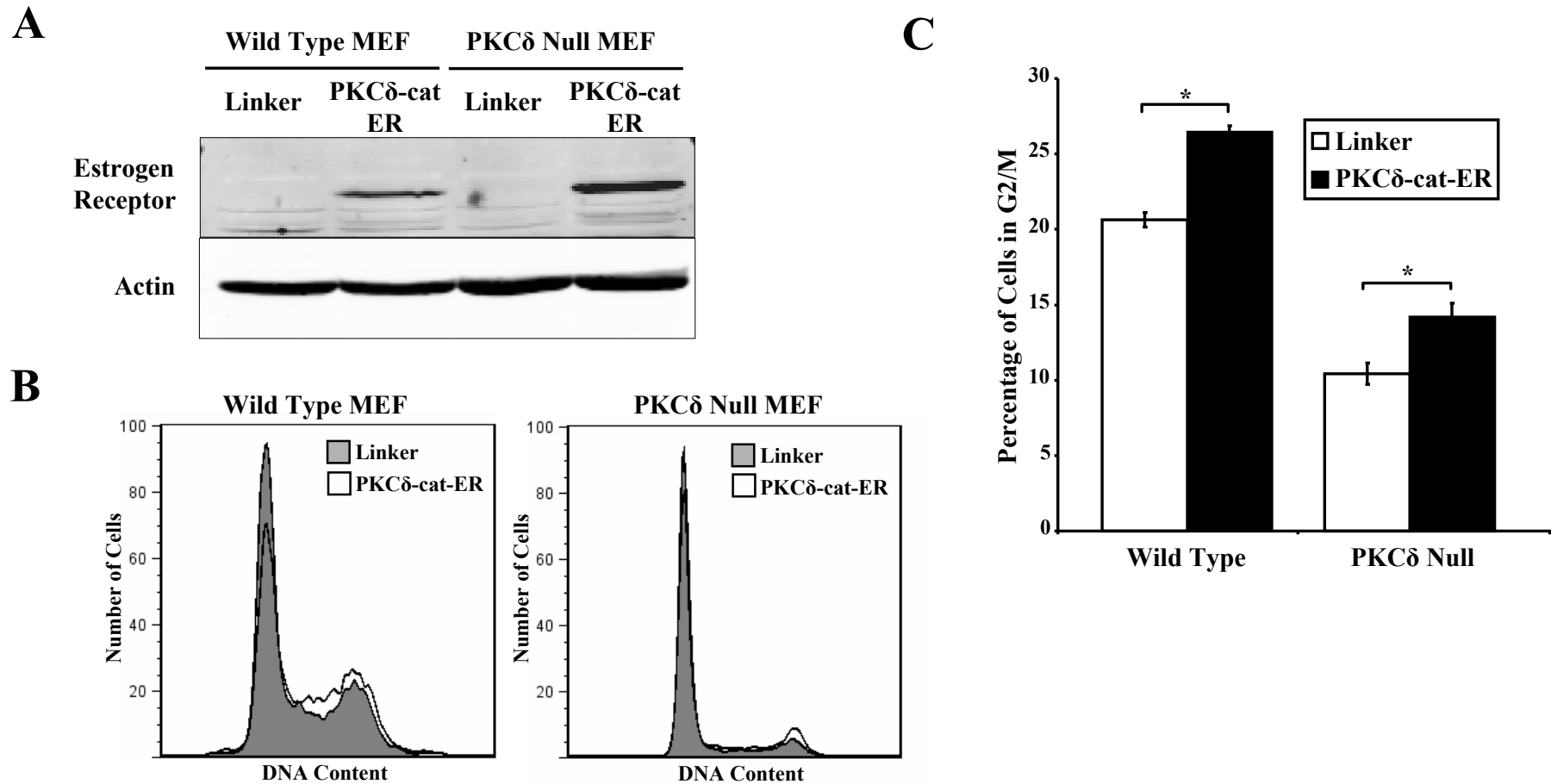
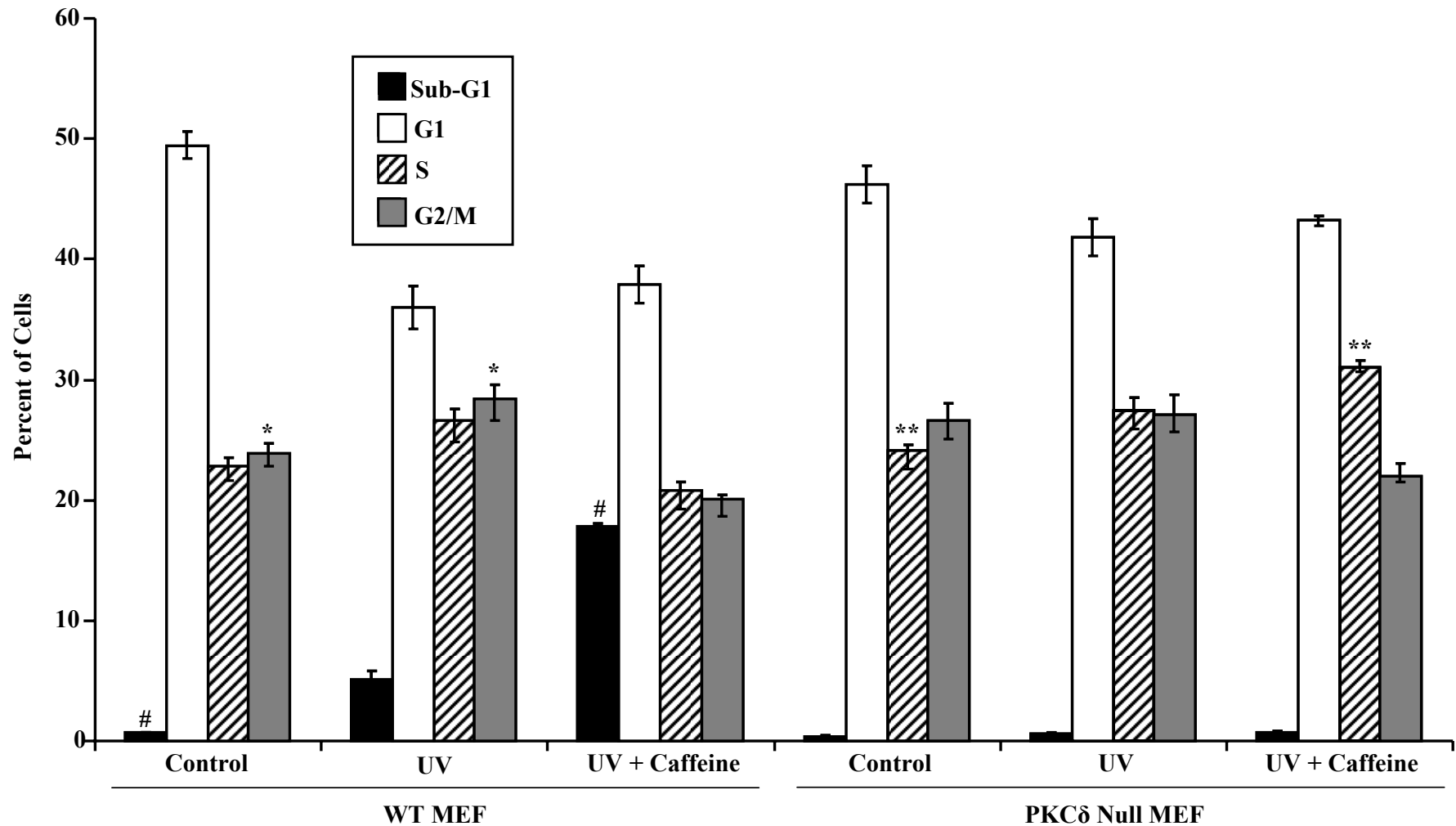


Supplemental Figure 1



SUPPLEMENTAL FIGURE 1. PKC δ -cat Induces G2/M Arrest in Wild Type and PKC δ Null MEFs. *A*, Western Blot showing retrovirally transduced expression of PKC δ -cat-ER in wild type and PKC δ null MEFs. *B*, Wild type and PKC δ null MEFs were transduced with either Linker or PKC δ -cat-ER retrovirus, and after 3 days stained with PI and analyzed by flow cytometry. *C*, Quantitation of the percent of G2/M cells from panel *B*. * Student's t-test value of $p < 0.01$

Supplemental Figure 2



SUPPLEMENTAL FIGURE 2. **Overriding the G2/M Checkpoint Induces UV Apoptosis in Wild Type but Not PKC δ Null MEFS.**

WT and PKC δ null MEFs were exposed to 30 mJ/cm² UV radiation in the presence or absence of 2 mM caffeine. Percentages of MEFs in each cell cycle phase are shown. Error bars denote the standard deviation of the mean from experiments performed in triplicate. * Student's t-test value of $p < 0.05$; # Student's t-test value of $p < 0.05$; ** Student's t-test value of $p < 10^{-4}$.